

6553 East Baywood Avenue, Mesa

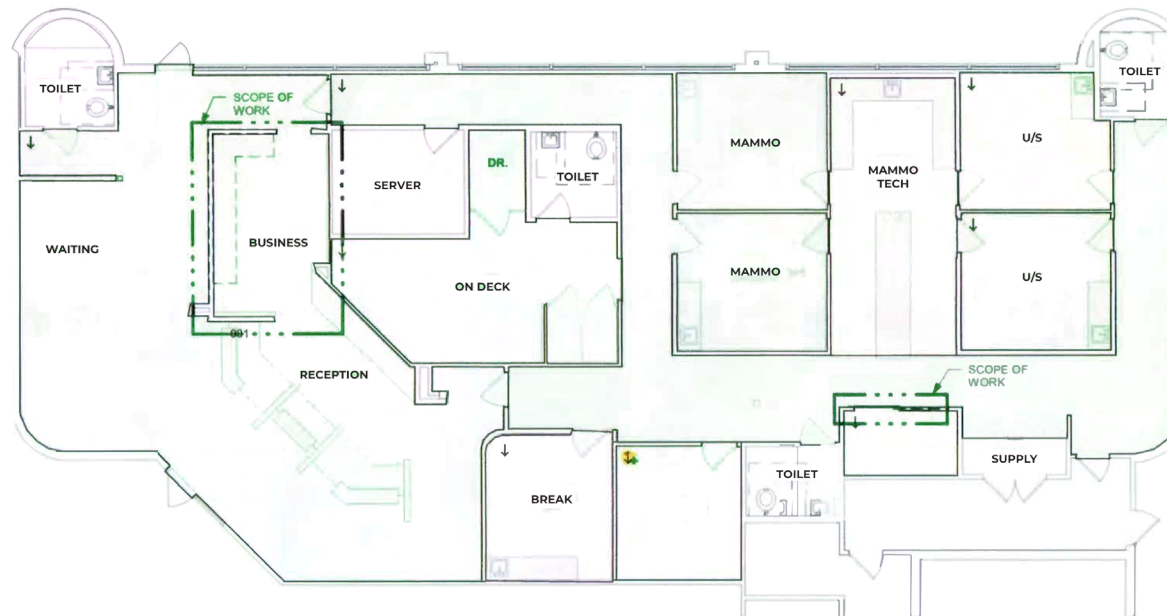
BAYWOOD

HEALTH CENTER

6550 East Broadway Road, Mesa

NORTH BUILDING

Suite 102: \pm 4,760 SF



For More Information, Please Contact:

Vince Femiano
Managing Director
602.954.7559
vince.femiano@transwestern.com

Kate Morris
Managing Director
602.296.6369
kate.morris@transwestern.com

Kevin Smigiel
Vice President
602.265.5502
kevin.smigiel@transwestern.com



2501 East Camelback Road, Suite 1
Phoenix, Arizona 85016
T 602.956.5000 F 602.956.5333
www.transwestern.com

6553 East Baywood Avenue, Mesa

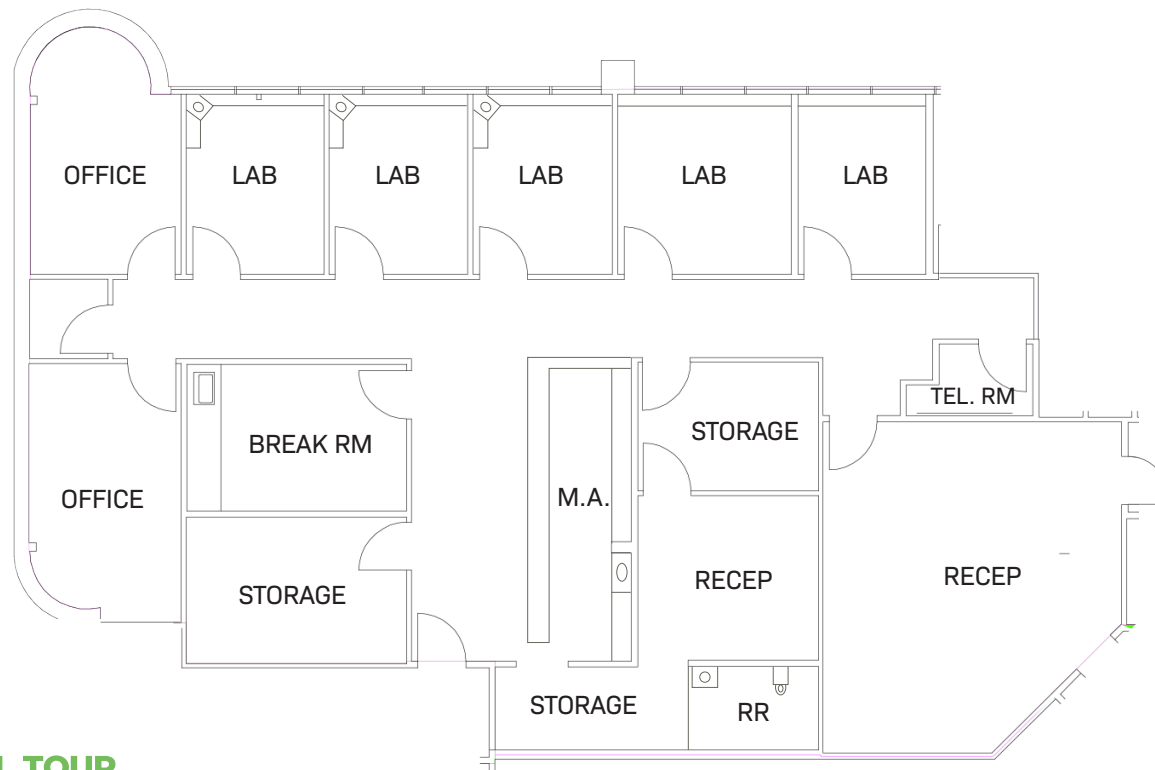
BAYWOOD

HEALTH CENTER

6550 East Broadway Road, Mesa

NORTH BUILDING

Suite 103: ±2,972 SF



VIRTUAL TOUR

For More Information, Please Contact:

Vince Femiano
Managing Director
602.954.7559
vince.femiano@transwestern.com

Kate Morris
Managing Director
602.296.6369
kate.morris@transwestern.com

Kevin Smigiel
Vice President
602.265.5502
kevin.smigiel@transwestern.com


TRANSWESTERN
REAL ESTATE
SERVICES

2501 East Camelback Road, Suite 1
Phoenix, Arizona 85016
T 602.956.5000 F 602.956.5333
www.transwestern.com

6553 East Baywood Avenue, Mesa

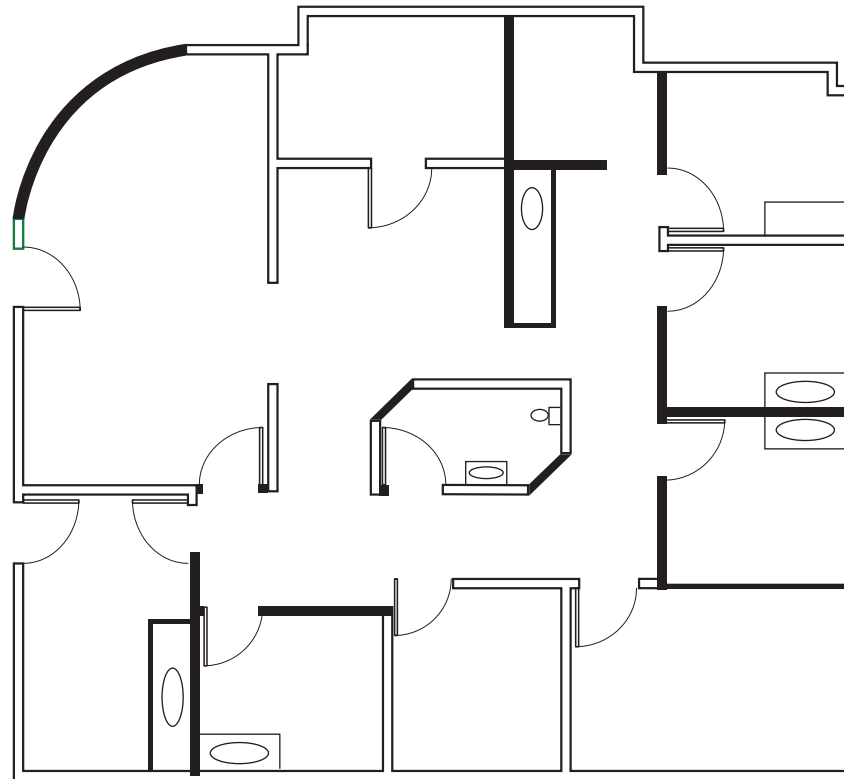
BAYWOOD

HEALTH CENTER

6550 East Broadway Road, Mesa

NORTH BUILDING

Suite 207: ±2,024 SF



VIRTUAL TOUR

For More Information, Please Contact:

Vince Femiano
Managing Director
602.954.7559
vince.femiano@transwestern.com

Kate Morris
Managing Director
602.296.6369
kate.morris@transwestern.com

Kevin Smigiel
Vice President
602.265.5502
kevin.smigiel@transwestern.com


TRANSWESTERN
REAL ESTATE
SERVICES

2501 East Camelback Road, Suite 1
Phoenix, Arizona 85016
T 602.956.5000 F 602.956.5333
www.transwestern.com

6553 East Baywood Avenue, Mesa

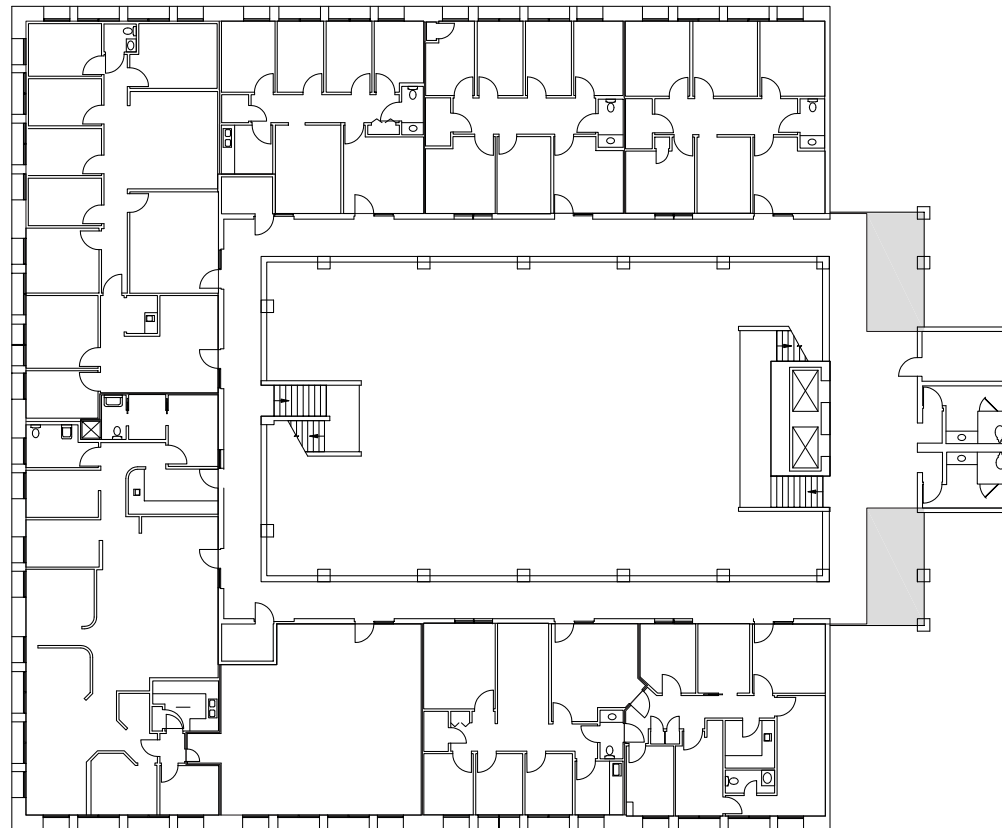
BAYWOOD

HEALTH CENTER

6550 East Broadway Road, Mesa

SOUTH BUILDING

Second Floor: ±12,649 SF
Divisible



For More Information, Please Contact:

Vince Femiano
Managing Director
602.954.7559
vince.femiano@transwestern.com

Kate Morris
Managing Director
602.296.6369
kate.morris@transwestern.com

Kevin Smigiel
Vice President
602.265.5502
kevin.smigiel@transwestern.com



2501 East Camelback Road, Suite 1
Phoenix, Arizona 85016
T 602.956.5000 F 602.956.5333
www.transwestern.com