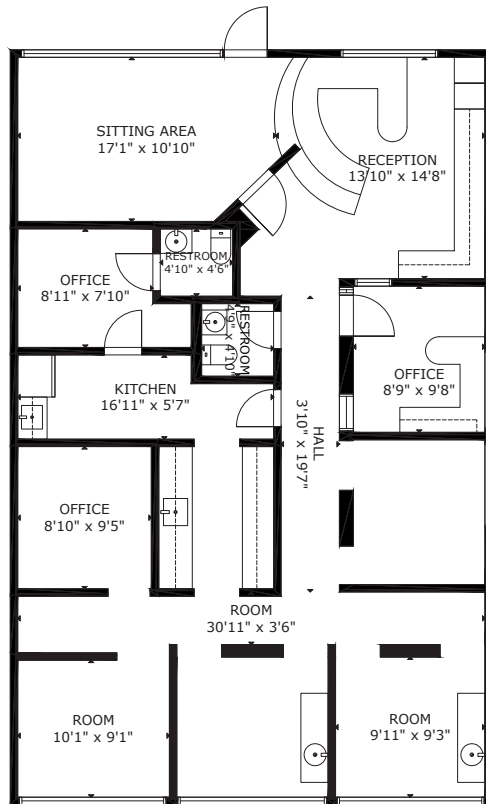


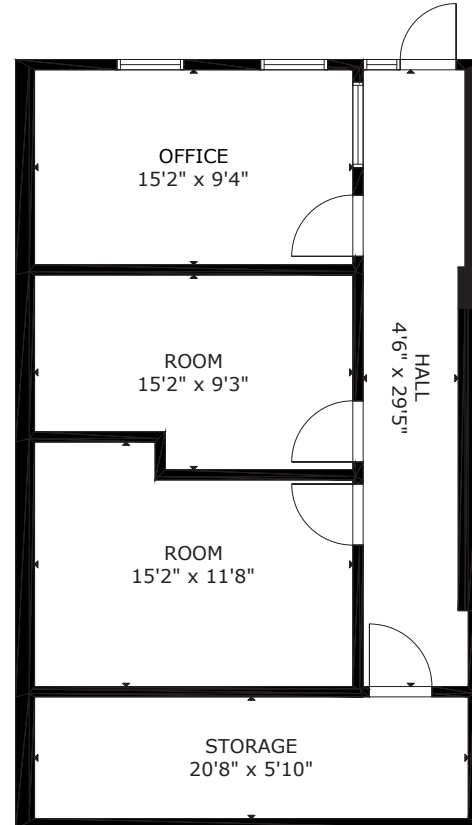
# Available For Immediate Occupancy



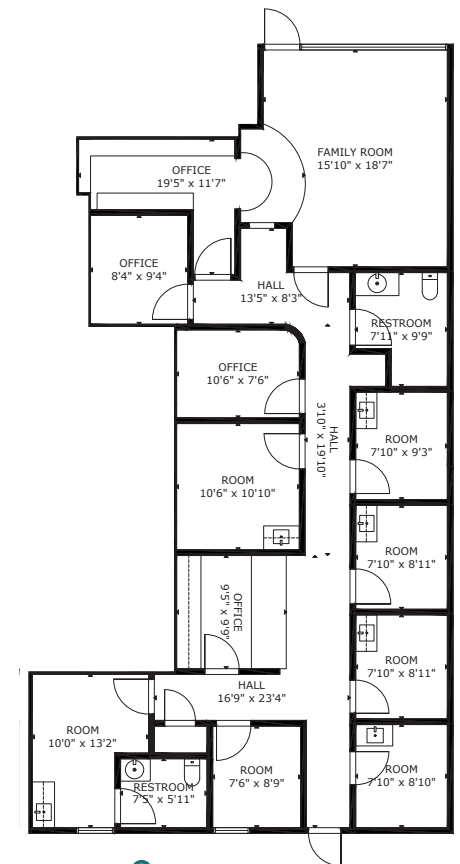
▪ **Suite 105:** ±1,600 RSF (Dental Space)



▪ **Suite 106:** ±767 RSF



▪ **Suite 109:** ±1,800 RSF



**Kathleen Morgan**  
Managing Director  
1 602 809 1048  
kathleen.morgan@transwestern.com

**Kevin Smigiel**  
Vice President  
1 602 550 9295  
kevin.smigiel@transwestern.com

**Vince Femiano**  
Managing Director  
1 602 791 3310  
vince.femiano@transwestern.com

**Andrew Olivet**  
Associate  
1 602 370 2685  
andrew.olivet@transwestern.com



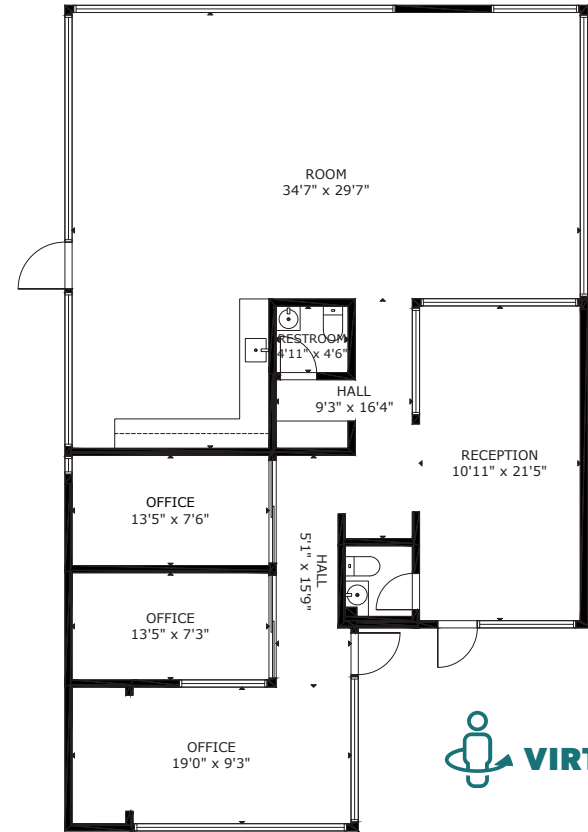
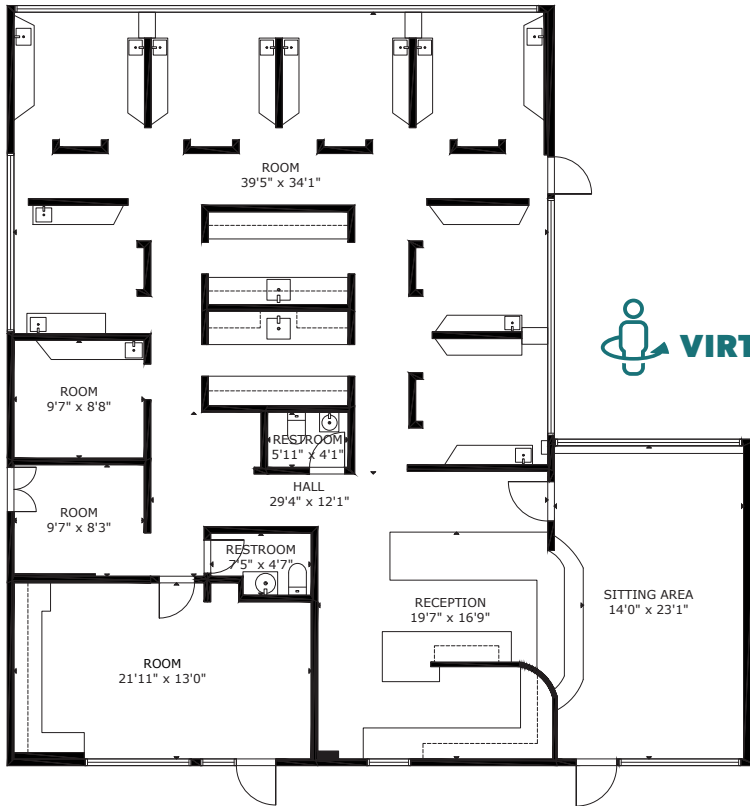
# Available For Immediate Occupancy



▪ **Suite 111:** ±2,590 RSF (Dental Space)

**Contiguous to ±4,345 RSF**

▪ **Suite 113:** ±1,755 RSF



**Kathleen Morgan**  
Managing Director  
1 602 809 1048  
kathleen.morgan@transwestern.com

**Kevin Smigiel**  
Vice President  
1 602 550 9295  
kevin.smigiel@transwestern.com

**Vince Femiano**  
Managing Director  
1 602 791 3310  
vince.femiano@transwestern.com

**Andrew Olivet**  
Associate  
1 602 370 2685  
andrew.olivet@transwestern.com

