

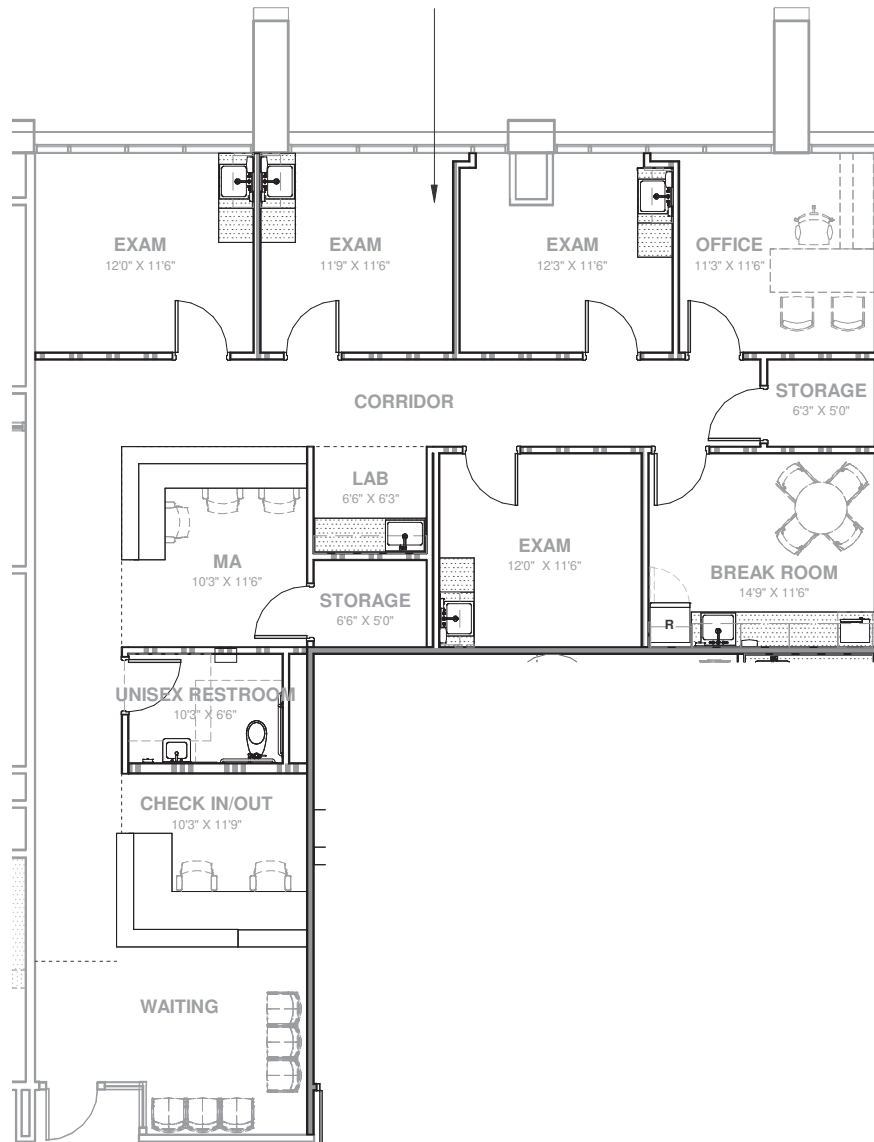
1st Floor

Suite 160: ±2,162 RSF

Medical Spec Suite - Available Q2 2025



[VIEW VIRTUAL TOUR](#)



Kathleen Morgan

Managing Director

1 602 809 1048

kathleen.morgan@transwestern.com

Kevin Smigiel

Vice President

1 602 550 9295

kevin.smigiel@transwestern.com

Vince Femiano

Managing Director

1 602 791 3310

vince.femiano@transwestern.com

Andrew Olivet

Associate

1 602 370 2685

andrew.olivet@transwestern.com



TRANSWESTERN

REAL ESTATE
SERVICES

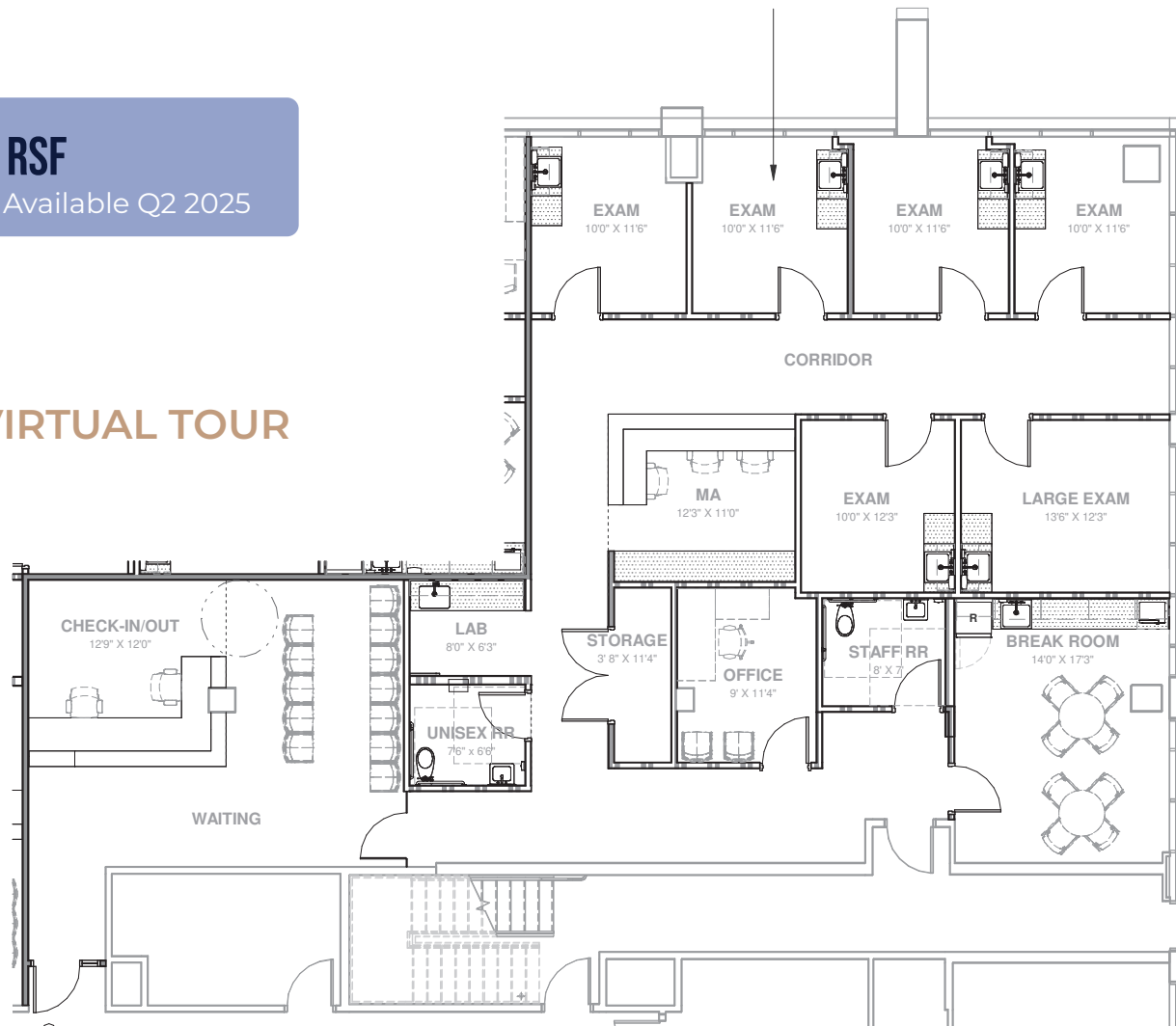
1st Floor

Suite 162: ±3,080 RSF

Medical Spec Suite - Available Q2 2025



VIEW VIRTUAL TOUR



Kathleen Morgan

Managing Director
1 602 809 1048

kathleen.morgan@transwestern.com

Kevin Smigiel

Vice President
1 602 550 9295

kevin.smigiel@transwestern.com

Vince Femiano

Managing Director
1 602 791 3310

vince.femiano@transwestern.com

Andrew Olivet

Associate
1 602 370 2685

andrew.olivet@transwestern.com

The information provided herein was obtained from sources believed reliable; however, Transwestern makes no guarantees, warranties or representations as to the completeness or accuracy thereof. The presentation of this property is submitted subject to errors, omissions, change of price or conditions, prior sale or lease, or withdrawal without notice. Copyright © 2025 Transwestern.



TRANSWESTERN

REAL ESTATE
SERVICES

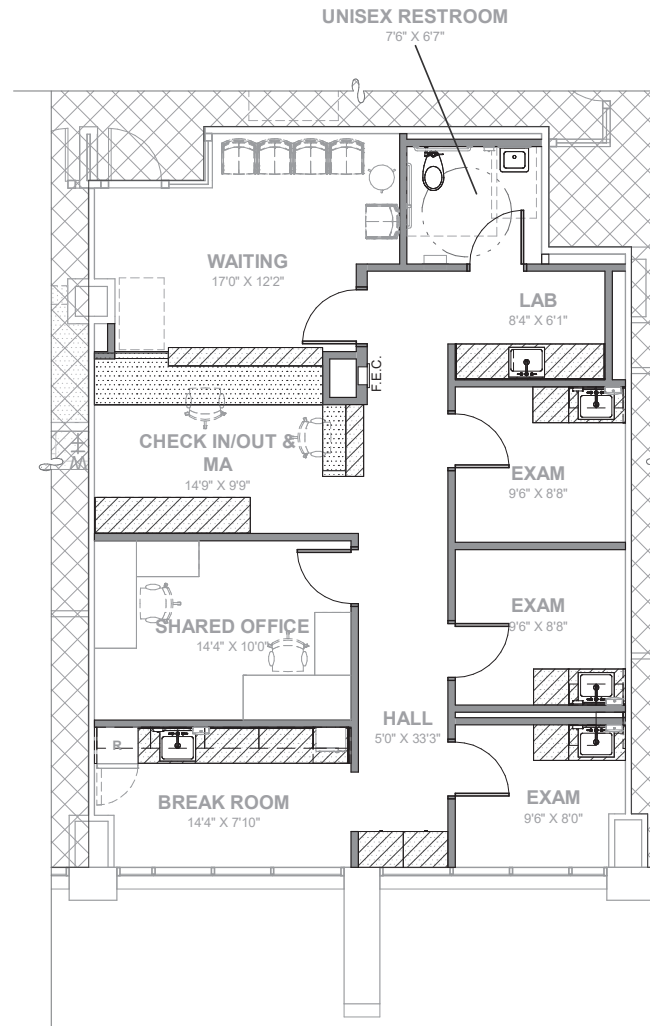
1st Floor

Suite 170: ±1,389 RSF

Medical Spec Suite - Available Q2 2025



VIEW VIRTUAL TOUR



Kathleen Morgan

Managing Director

1 602 809 1048

kathleen.morgan@transwestern.com

Kevin Smigiel

Vice President

1 602 550 9295

kevin.smigiel@transwestern.com

Vince Femiano

Managing Director

1 602 791 3310

vince.femiano@transwestern.com

Andrew Olivet

Associate

1 602 370 2685

andrew.olivet@transwestern.com

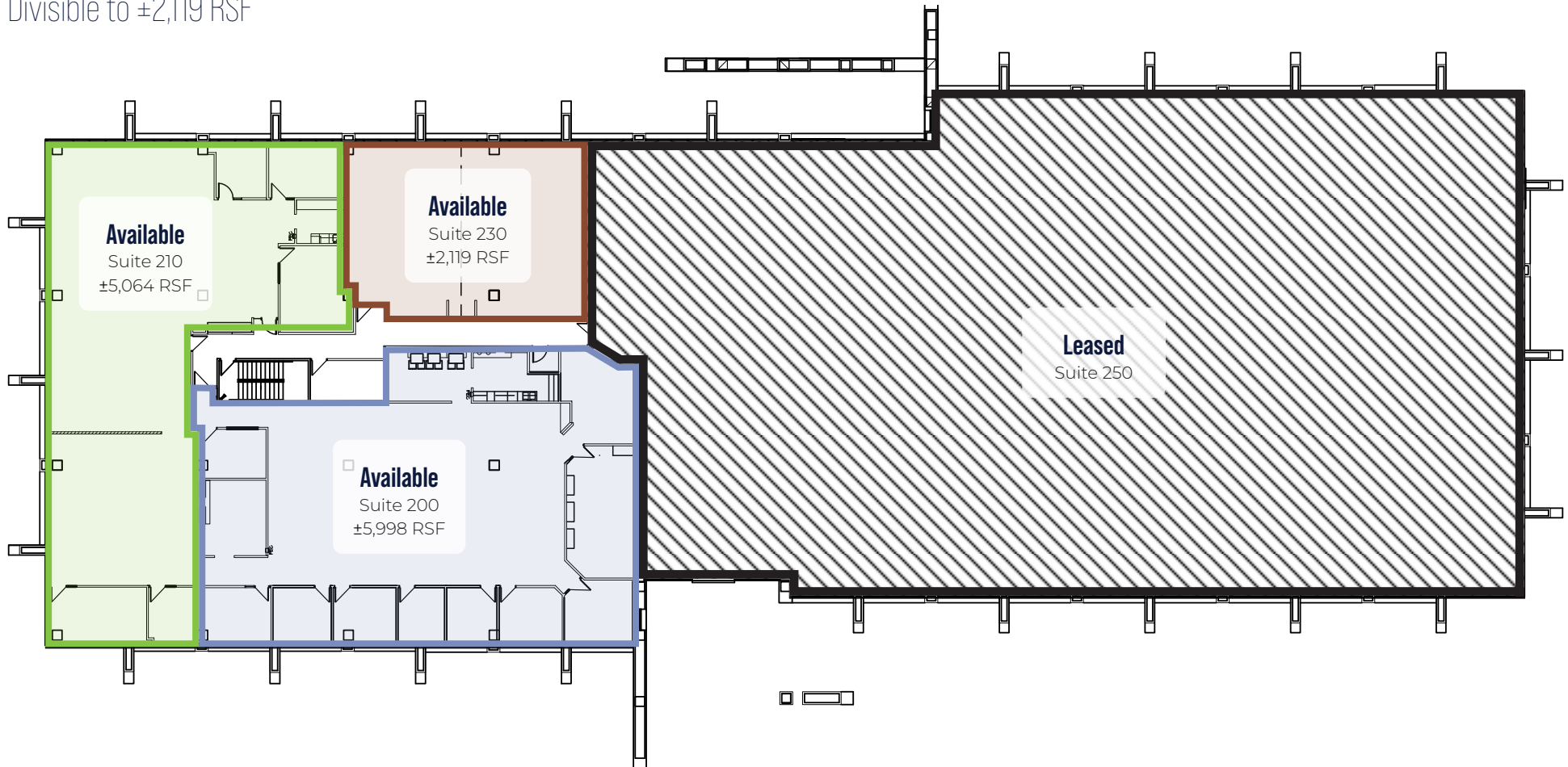


TRANSWESTERN

REAL ESTATE
SERVICES

2nd Floor - ±13,181 RSF Available

Divisible to ±2,119 RSF



Kathleen Morgan

Managing Director
1 602 809 1048
kathleen.morgan@transwestern.com

Kevin Smigiel

Vice President
1 602 550 9295
kevin.smigiel@transwestern.com

Vince Femiano

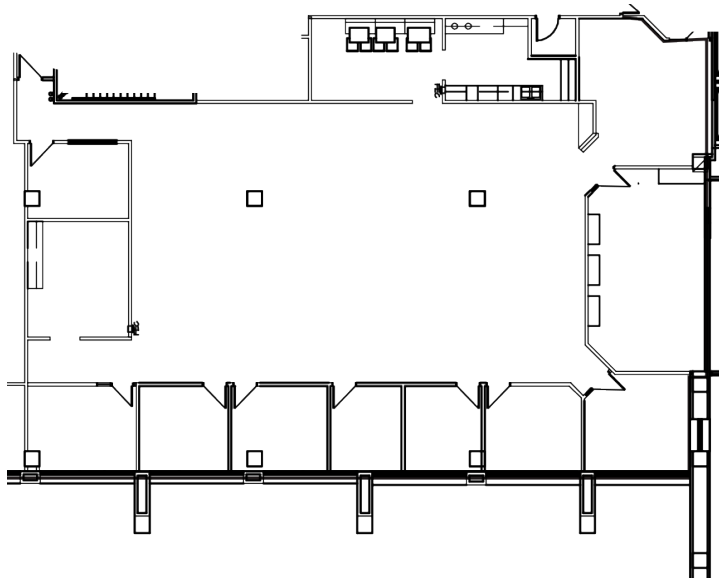
Managing Director
1 602 791 3310
vince.femiano@transwestern.com

Andrew Olivet

Associate
1 602 370 2685
andrew.olivet@transwestern.com



2nd Floor - Suite 200 - ±5,998 RSF



[VIEW VIRTUAL TOUR](#)

Kathleen Morgan

Managing Director
1 602 809 1048
kathleen.morgan@transwestern.com

Kevin Smigiel

Vice President
1 602 550 9295
kevin.smigiel@transwestern.com

Vince Femiano

Managing Director
1 602 791 3310
vince.femiano@transwestern.com

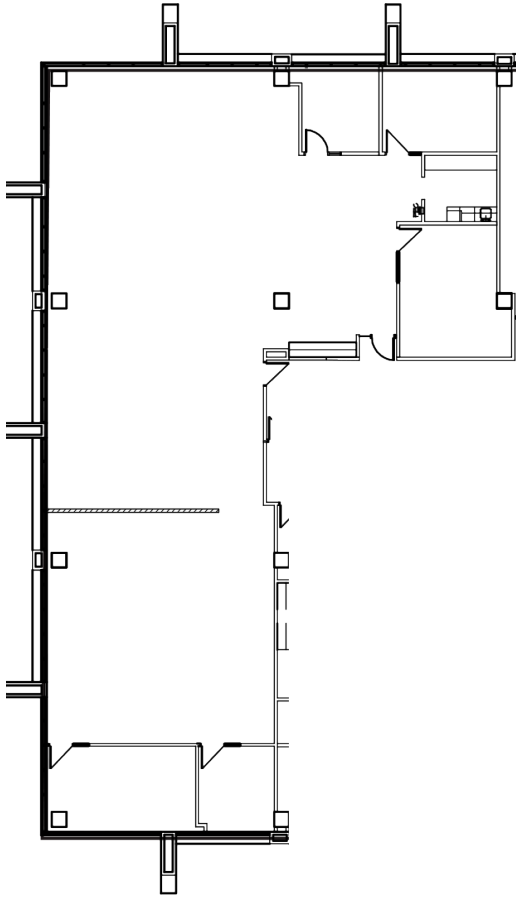
Andrew Olivet

Associate
1 602 370 2685
andrew.olivet@transwestern.com

The information provided herein was obtained from sources believed reliable; however, Transwestern makes no guarantees, warranties or representations as to the completeness or accuracy thereof. The presentation of this property is submitted subject to errors, omissions, change of price or conditions, prior sale or lease, or withdrawal without notice. Copyright © 2025 Transwestern.



2nd Floor - Suite 210 - ±5,064 RSF



VIEW VIRTUAL TOUR

Kathleen Morgan

Managing Director
1 602 809 1048

kathleen.morgan@transwestern.com

Kevin Smigiel

Vice President
1 602 550 9295

kevin.smigiel@transwestern.com

Vince Femiano

Managing Director
1 602 791 3310

vince.femiano@transwestern.com

Andrew Olivet

Associate
1 602 370 2685

andrew.olivet@transwestern.com

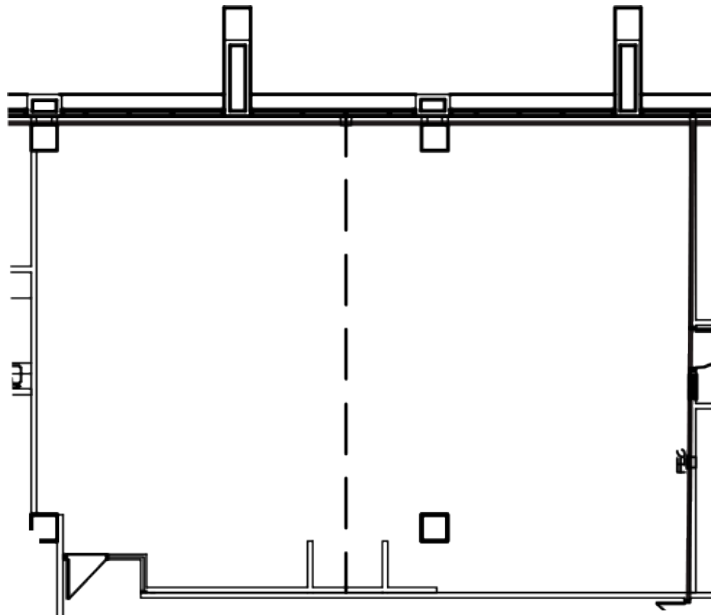
The information provided herein was obtained from sources believed reliable; however, Transwestern makes no guarantees, warranties or representations as to the completeness or accuracy thereof. The presentation of this property is submitted subject to errors, omissions, change of price or conditions, prior sale or lease, or withdrawal without notice. Copyright © 2025 Transwestern.



TRANSWESTERN

REAL ESTATE
SERVICES

2nd Floor - Suite 230 - ±2,119 RSF



Kathleen Morgan

Managing Director
1 602 809 1048

kathleen.morgan@transwestern.com

Kevin Smigiel

Vice President
1 602 550 9295

kevin.smigiel@transwestern.com

Vince Femiano

Managing Director
1 602 791 3310

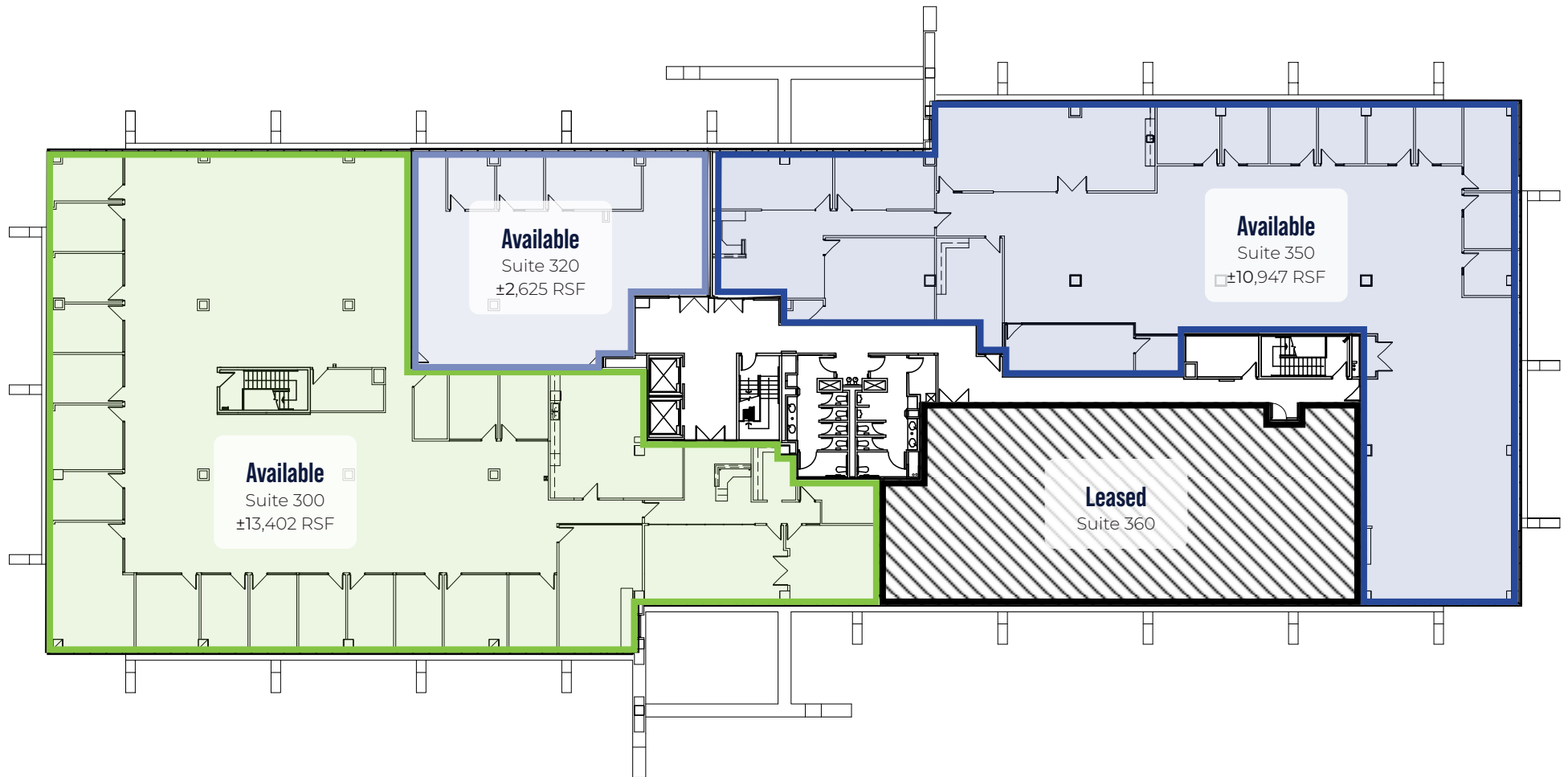
vince.femiano@transwestern.com

Andrew Olivet

Associate
1 602 370 2685

andrew.olivet@transwestern.com

3rd Floor



Kathleen Morgan

Managing Director
1 602 809 1048

kathleen.morgan@transwestern.com

Kevin Smigiel

Vice President
1 602 550 9295

kevin.smigiel@transwestern.com

Vince Femiano

Managing Director
1 602 791 3310

vince.femiano@transwestern.com

Andrew Olivet

Associate
1 602 370 2685

andrew.olivet@transwestern.com



TRANSWESTERN

REAL ESTATE
SERVICES