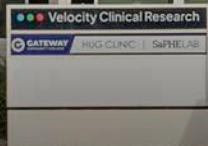


555 N 18TH STREET

PHOENIX, AZ 85006

GATEWAY
COMMUNITY COLLEGE

555



MEDICAL SUITES FOR LEASE



TRANSWESTERN

REAL ESTATE
SERVICES

**555 N 18TH STREET
PHOENIX, AZ 85006**
MEDICAL SUITES FOR LEASE

**LEASE RATE:
\$22.00/SF NNN**

Suite 105: ±2,030 SF*

Suite 107: ±1,641 SF*

Suite 300: ±5,429 SF

Suite 305: ±4,350 SF

***Suites 105 & 107 are contiguous to ±3,671 SF**



AMPLE
parking available



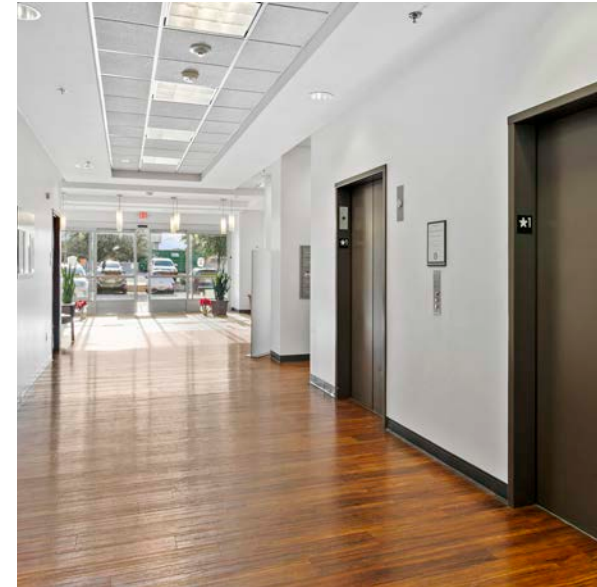
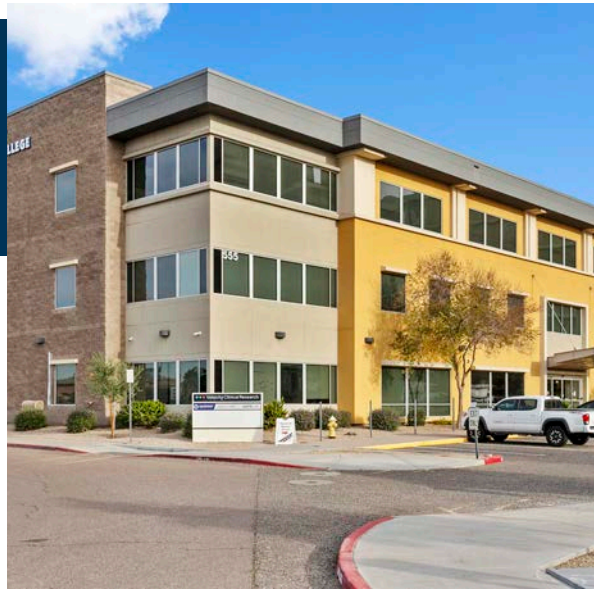
**CLOSE
PROXIMITY**
To the I-10, 51, and Loop
202 Freeways



**4 MAJOR
HOSPITALS**
Nearby including Banner
Health, St. Joseph's
Medical Center, Phoenix
Children's Hospital, and
Valleywise Health



NEARBY
Numerous restaurant
and retail amenities

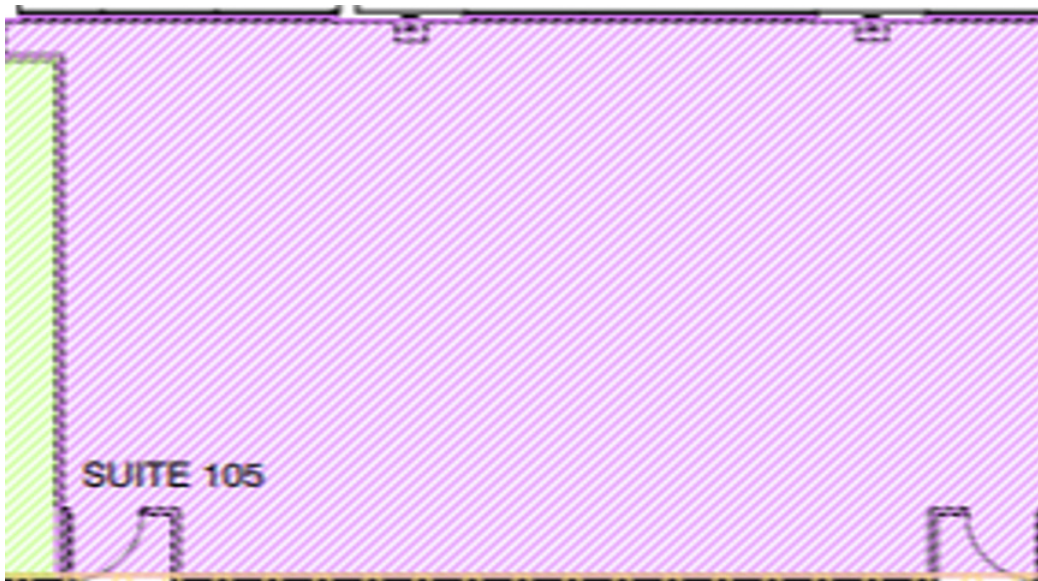


555 N 18TH STREET, PHOENIX, AZ 85006

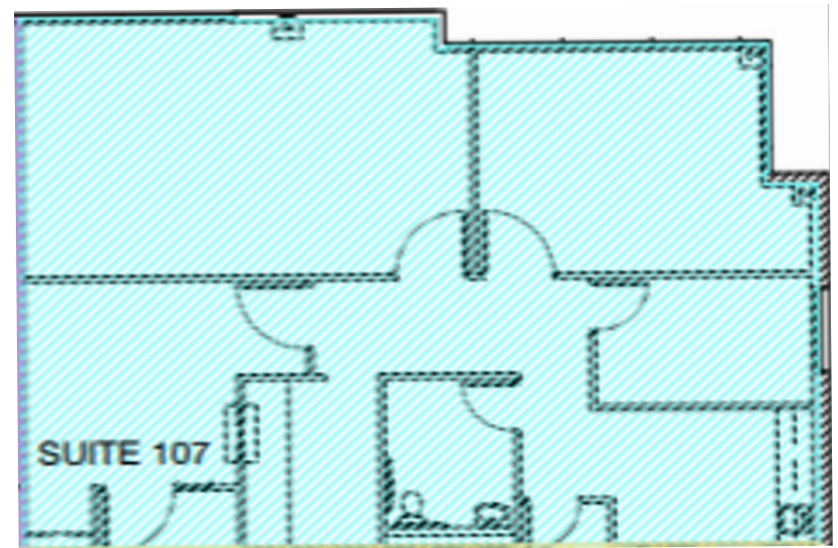
MEDICAL SUITES FOR LEASE

*Suites 105 & 107 are contiguous to $\pm 3,671$ SF

Suite 105: $\pm 2,030$ RSF

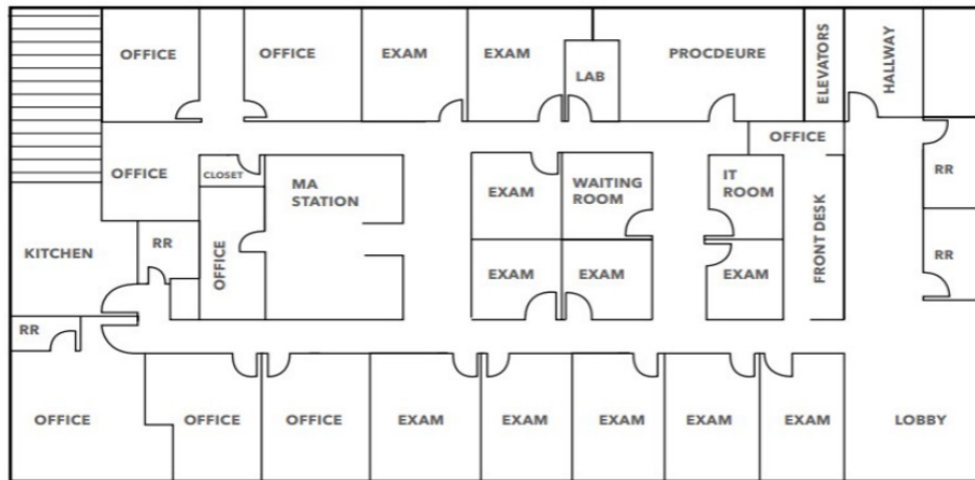


Suite 107: $\pm 1,641$ RSF

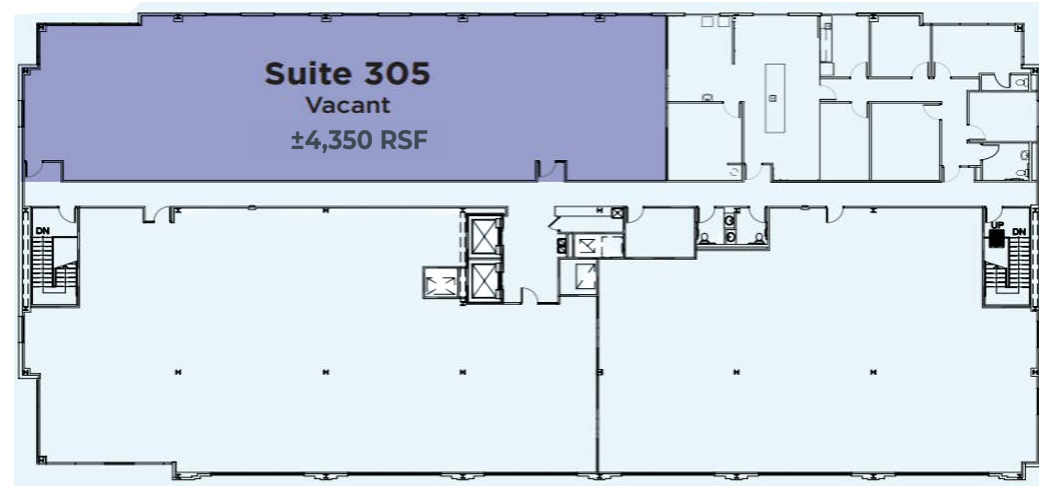


**555 N 18TH STREET,
PHOENIX, AZ 85006**
MEDICAL SUITES FOR LEASE

Suite 300: ±5,429 RSF



Suite 305: ±4,350 RSF





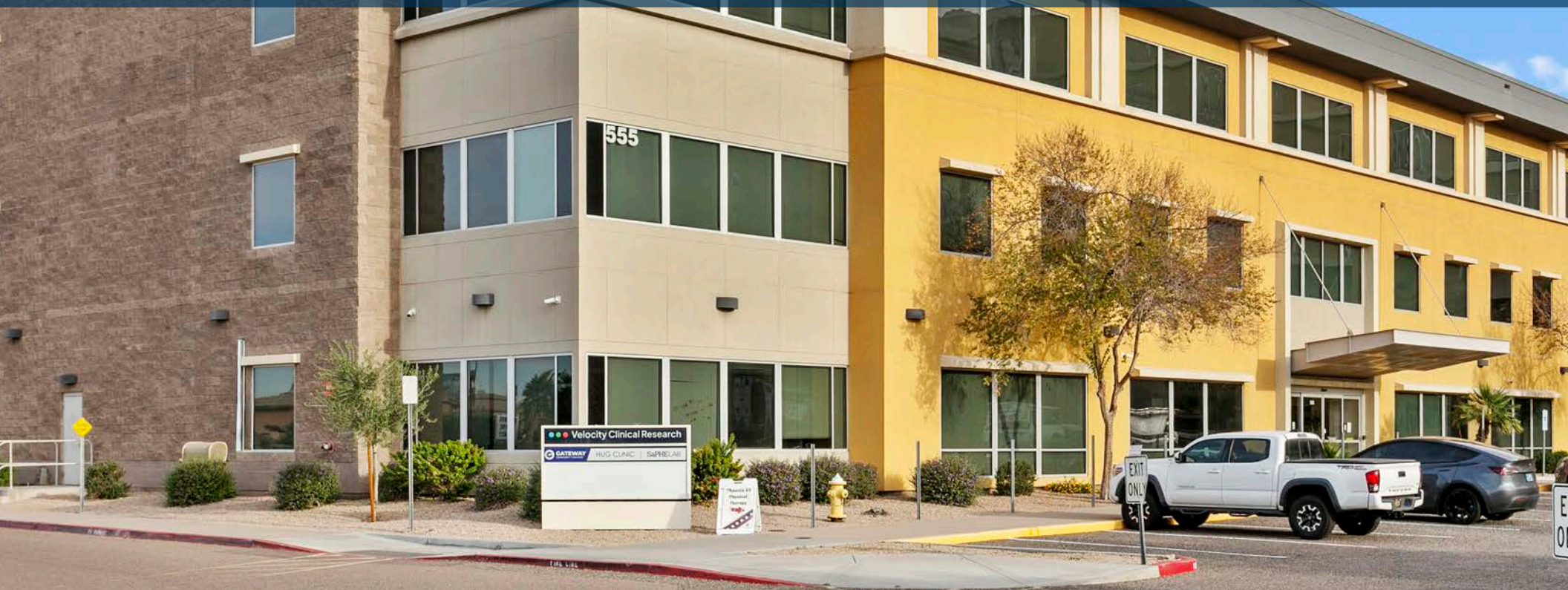
- » 49,751 SF Total
- » 3 Stories
- » Easy access to I-10 freeway

- » Located along the corridor of several top-tier hospitals such as Banner Health, St. Joseph's Medical Center, Phoenix Children's Hospital, and Valleywise Health

555 N 18TH STREET

PHOENIX, AZ 85006

MEDICAL SUITES FOR LEASE

**KATHLEEN MORGAN**

Managing Director
602.809.1048
kathleen.morgan@transwestern.com

KEVIN SMIGIEL

Vice President
602.550.9295
kevin.smigiel@transwestern.com

VINCE FEMIANO

Managing Director
602.791.3310
vince.femiano@transwestern.com

ANDREW OLIVET

Associate
602.370.2685
andrew.olivet@transwestern.com

