

EDWARDS PROFESSIONAL PARK I

10752 N 89th Place | Scottsdale, Arizona

OFFICE SUITES & MEDICAL SUITES FOR LEASE



**SPEC SUITES AVAILABLE
FOR IMMEDIATE OCCUPANCY**



TRANSWESTERN

REAL ESTATE
SERVICES

EDWARDS PROFESSIONAL PARK I

10752 N 89th Place | Scottsdale, Arizona

OFFICE SUITES & MEDICAL SUITES FOR LEASE

LEASE RATE:

\$35.00 (Full Service, Net of Janitorial)

Contiguous to
±1,544 RSF

SUITE A202: ±1,396 RSF

SUITE A207: ± 736 RSF

SUITE A208: ±808 RSF

Medical Spec Suite

SUITE B121: ±1,914 RSF

SUITE B122: ±1,272 RSF

SUITE C222: ± 1,058 RSF



LOCATED

Just off Loop 101,
north of Shea Blvd



TENANT MIX

Excellent mix of medical,
dental, and office tenants



1/2 MILE

From HonorHealth
Scottsdale Shea Hospital



NEARBY

Numerous restaurant
and retail amenities



KATHLEEN MORGAN

Managing Director
602.809.1048
kathleen.morgan@transwestern.com

KEVIN SMIGIEL

Vice President
602.550.9295
kevin.smigiel@transwestern.com

VINCE FEMIANO

Managing Director
602.791.3310
vince.femiano@transwestern.com

ANDREW OLIVET

Associate
602.370.2685
andrew.olivet@transwestern.com

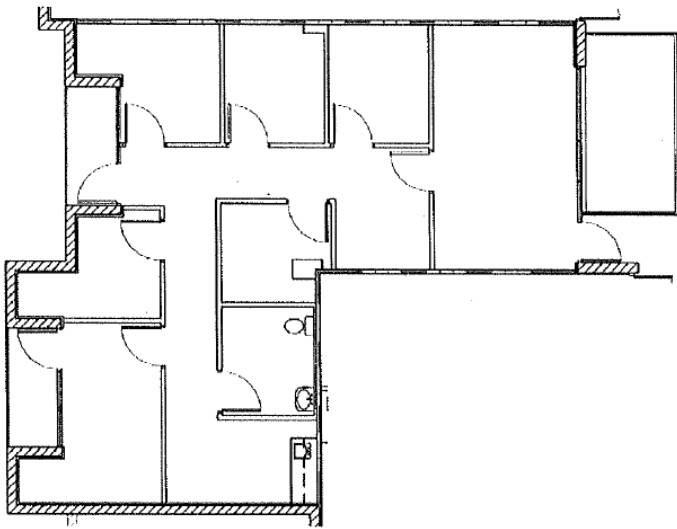
EDWARDS PROFESSIONAL PARK I

10752 N 89th Place | Scottsdale, Arizona

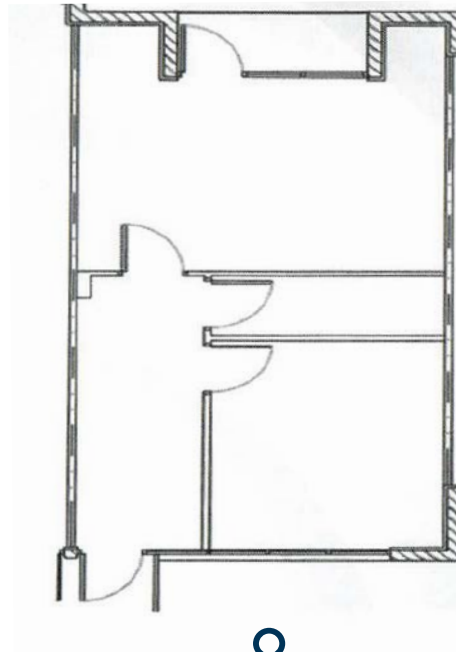
OFFICE SUITES & MEDICAL SUITES FOR LEASE

BUILDING A

SUITE A202: ±1,396 RSF

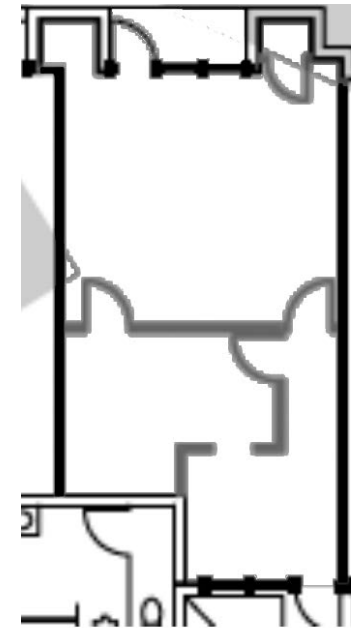


SUITE A207: ±736 RSF



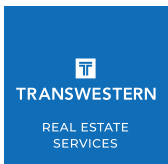
VIRTUAL TOUR

SUITE A208: ±808 RSF



VIRTUAL TOUR

Contiguous to
±1,544 RSF



KATHLEEN MORGAN

Managing Director
602.809.1048
kathleen.morgan@transwestern.com

KEVIN SMIGIEL

Vice President
602.550.9295
kevin.smigiel@transwestern.com

VINCE FEMIANO

Managing Director
602.791.3310
vince.femiano@transwestern.com

ANDREW OLIVET

Associate
602.370.2685
andrew.olivet@transwestern.com

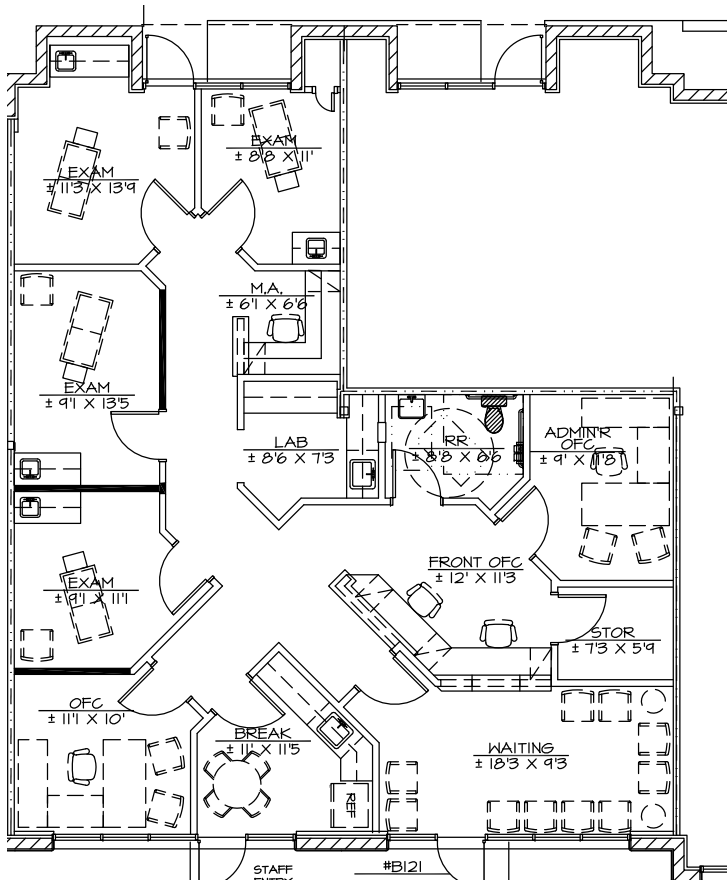
EDWARDS PROFESSIONAL PARK I

10752 N 89th Place | Scottsdale, Arizona

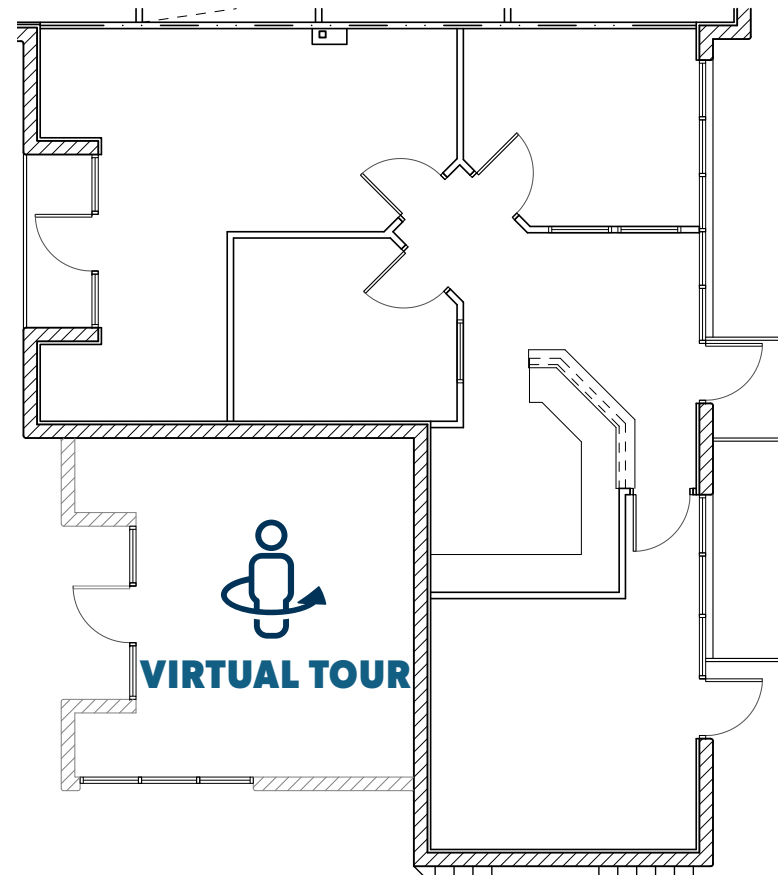
OFFICE SUITES & MEDICAL SUITES FOR LEASE

BUILDING B

SUITE B121: ±1,914 RSF | MEDICAL SPEC SUITE



SUITE B212: ±1,272 RSF



EDWARDS PROFESSIONAL PARK I

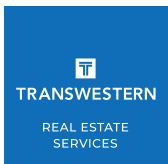
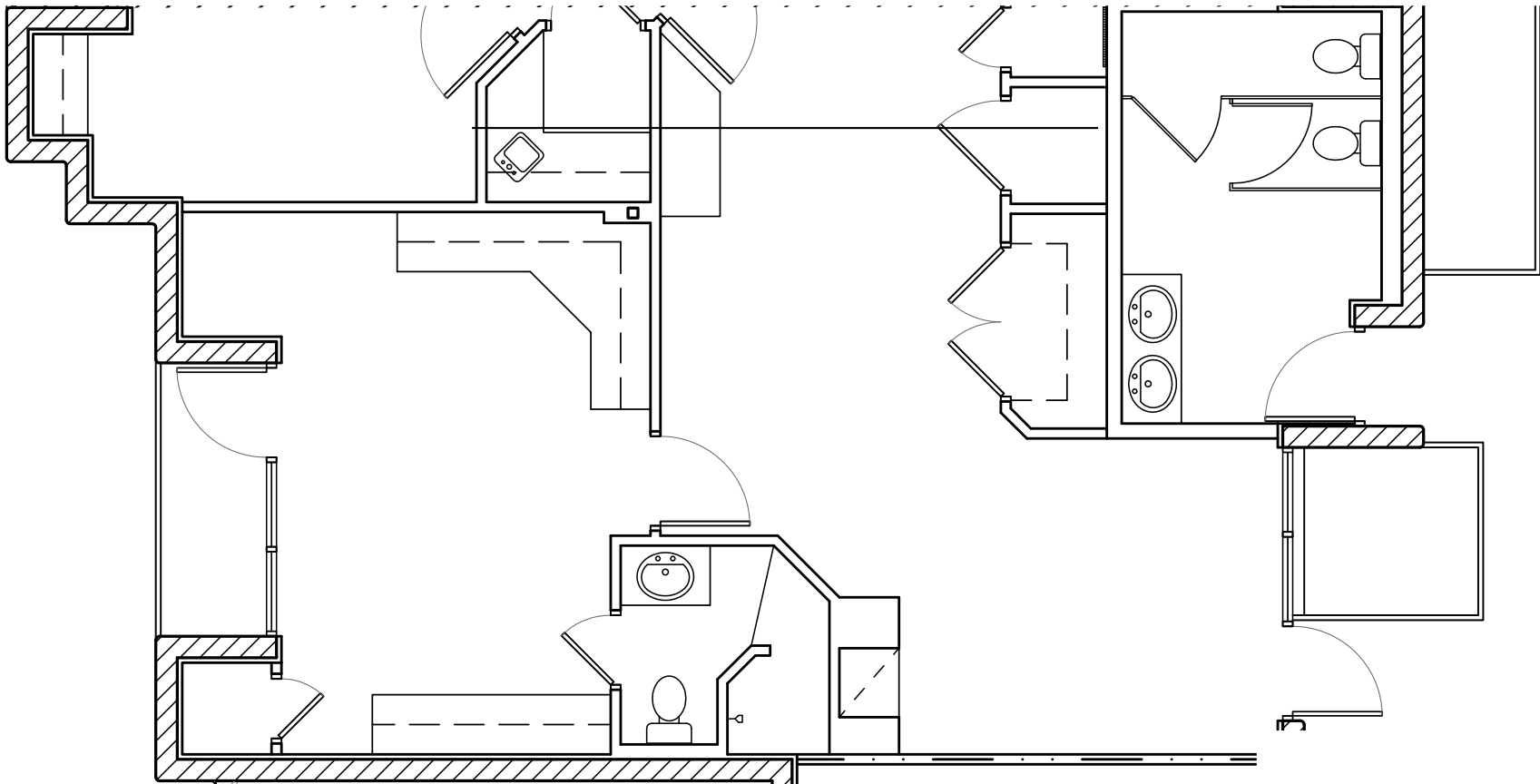
10752 N 89th Place | Scottsdale, Arizona

OFFICE SUITES & MEDICAL SUITES FOR LEASE

BUILDING C



SUITE C222: ±1,058 RSF



KATHLEEN MORGAN

Managing Director
602.809.1048
kathleen.morgan@transwestern.com

KEVIN SMIGIEL

Vice President
602.550.9295
kevin.smigiel@transwestern.com

VINCE FEMIANO

Managing Director
602.791.3310
vince.femiano@transwestern.com

ANDREW OLIVET

Associate
602.370.2685
andrew.olivet@transwestern.com



HONORHEALTH

Scottsdale Shea
Medical Center

SCOTTSDALE FIESTA SHOPPING CENTER



**EDWARDS
PROFESSIONAL
PARK I**

E SHEA BLVD - 61,400 VPD

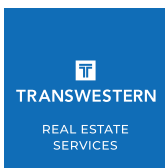
N 89TH PL

E DESERT COVE AVE

**LOOP
101**

17,878 VPD

- » 51,509 SF Total
- » 2 Stories
- » Class B Office Building
- » New Ownership
- » Strong traffic counts along Shea Blvd & Loop 101 Freeway



KATHLEEN MORGAN

Managing Director
602.809.1048
kathleen.morgan@transwestern.com

KEVIN SMIGIEL

Vice President
602.550.9295
kevin.smigiel@transwestern.com

VINCE FEMIANO

Managing Director
602.791.3310
vince.femiano@transwestern.com

ANDREW OLIVET

Associate
602.370.2685
andrew.olivet@transwestern.com

EDWARDS PROFESSIONAL PARK I

10752 N 89th Place | Scottsdale, Arizona

OFFICE SUITES & MEDICAL SUITES FOR LEASE

**KATHLEEN MORGAN**

Managing Director
602.809.1048

kathleen.morgan@transwestern.com

KEVIN SMIGIEL

Vice President
602.550.9295

kevin.smigiel@transwestern.com

VINCE FEMIANO

Managing Director
602.791.3310

vince.femiano@transwestern.com

ANDREW OLIVET

Associate
602.370.2685

andrew.olivet@transwestern.com



TRANSWESTERN

REAL ESTATE
SERVICES

The information provided herein was obtained from sources believed reliable; however, Transwestern makes no guarantees, warranties or representations as to the completeness of accuracy thereof. The presentation of this property is submitted subject to errors, omissions, change of price or conditions, prior to sale or lease, or withdrawal without notice. Copyright © 2025 Transwestern.