



TRANSWESTERN

REAL ESTATE  
SERVICES



SPEC SUITE SPACE AVAILABLE

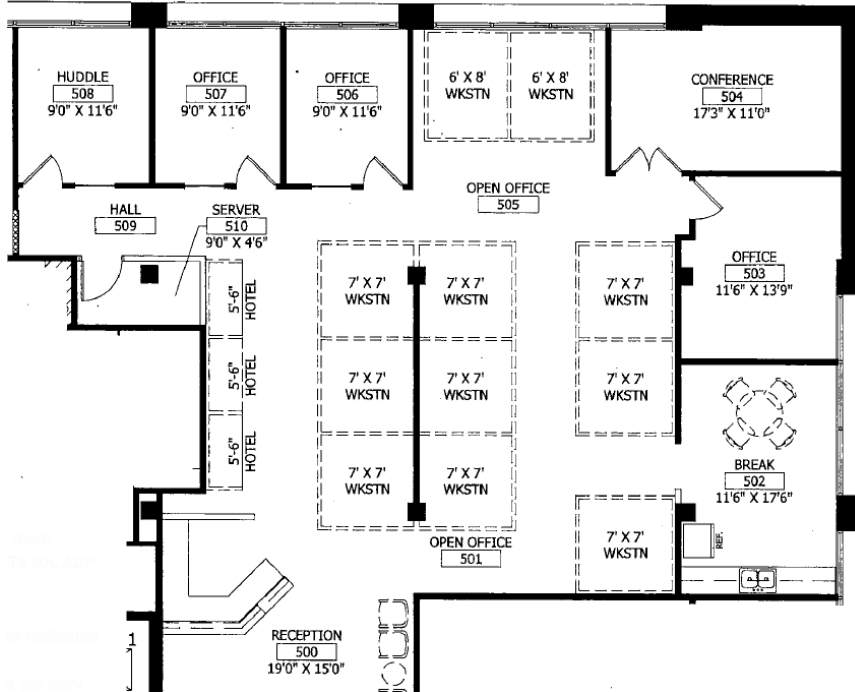
## WOODLAKE HEALTH & OFFICE CENTRE

6625 LYNDALE AVE S, RICHFIELD, MN 55423



# MOVE-IN READY OFFICE SPEC SUITE

## SUITE 510 | 3,054 SF



Private Offices: 3  
Individual Workstations: 14  
Break Room: 1  
Conference Room: 1

### SPEC SUITE FEATURES

- Welcoming reception and comfortable waiting area
- Secure card access system for suite entry
- Freshly installed carpet throughout, with PVC plank flooring in the break room
- Versatile layout featuring private offices, collaborative workstations, and conference rooms
- Fully equipped kitchen with ample counter space and cabinetry

### BUILDING INFORMATION

6625 Lyndale Ave South in Richfield, Minnesota, offers a highly accessible and visible location with convenient access to major highways and nearby residential areas. The building features modern infrastructure, flexible space configurations, and ample parking, making it adaptable for various uses. Situated in a well-trafficked corridor, it provides an excellent opportunity to attract and serve a broad customer base while benefiting from the area's strong demographics and nearby amenities.



Seamless access to I-35W  
and Crosstown Highway 62



Conveniently located near a  
variety of retail and dining options



Within minutes of MSP  
International Airport

