

**INDUSTRIAL  
SPACE  
FOR LEASE**

**±2,476 -  
±5,600 SF**

**Well-maintained  
Multi-Tenant  
Facility**

**Close Proximity  
to I-294 at  
Lake Cook and  
Palatine Roads**

**Professionally owned by:**  
**J&L REAL PROPERTIES**

**TRANSWESTERN**  
REAL ESTATE  
SERVICES

# 830 SETON COURT

Wheeling, IL 60090

[Property Website](#)

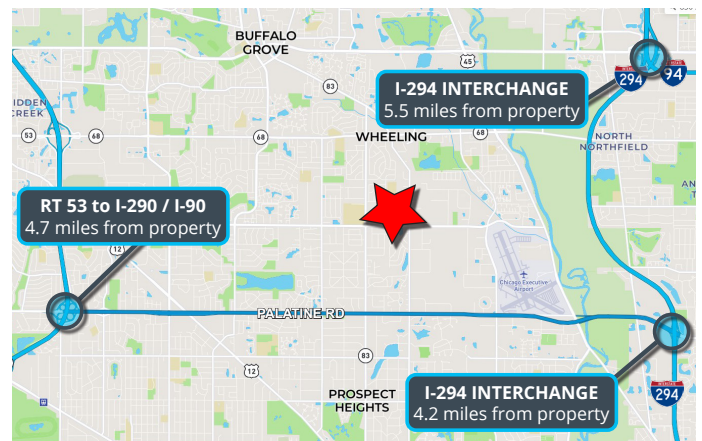


## SPECIFICATIONS

- Building Size: ±31,815 SF
- Land Area: ±1.85 AC
- Available: ±2,476 - ±5,600 SF
- Ceiling Height: 14' Clear
- Loading: 1 DID Per Unit  
-Unit 3 & 4 and Unit 10 have access to 2 shared interior loading docks
- Parking: ±55 Cars (Bldg Total)
- Year Built: 1975
- Construction: Masonry
- Sprinklered: Yes
- **Lease Rate: Subject to Offer**

## HIGHLIGHTS

- Well-maintained multi-tenant facility
- Close proximity to the 4-way interchanges at I-294 and Lake Cook Rd and Palatine Rd
- Great access to Routes 83, 68, 53, 45, 21 and 12
- Near the Chicago Executive Airport
- Professionally owned and managed building



**Joe Karmin, SIOR**  
Executive Vice President  
847.588.5670  
[joe.karmin@transwestern.com](mailto:joe.karmin@transwestern.com)

**Justin Lerner, SIOR**  
Executive Vice President  
847.588.5665  
[justin.lerner@transwestern.com](mailto:justin.lerner@transwestern.com)

**Ross Lehrman**  
Senior Vice President  
847.588.5671  
[ross.lehrman@transwestern.com](mailto:ross.lehrman@transwestern.com)


The information provided herein was obtained from sources believed reliable; however, Transwestern makes no guarantees, warranties, or representations as to the completeness or accuracy thereof. The presentation of this information is submitted subject to errors, omissions, change of price or conditions, prior sale or lease, or withdrawal without notice. Copyright © 2025 Transwestern.

**INDUSTRIAL  
SPACE  
FOR LEASE**

**±2,476 -  
±5,600 SF**

Well-maintained  
Multi-Tenant  
Facility

Close Proximity  
to I-294 at  
Lake Cook and  
Palatine Roads

Professionally owned by:  
 **J&L REAL PROPERTIES**

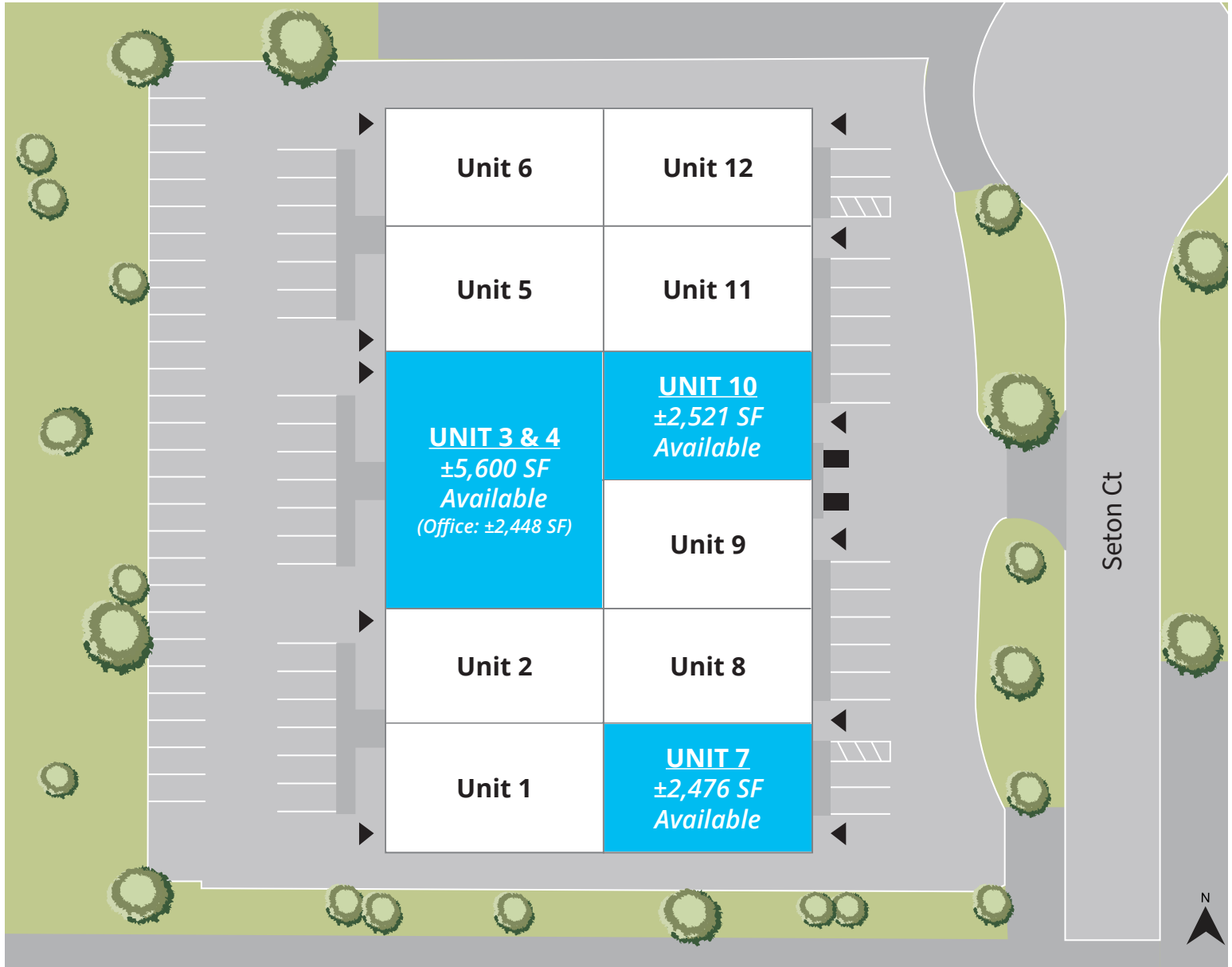
  
**TRANSWESTERN**  
REAL ESTATE  
SERVICES

# 830 SETON COURT

Wheeling, IL 60090

[Property Website](#)

## SITE PLAN



**Joe Karmin, SIOR**  
Executive Vice President  
847.588.5670  
[joe.karmin@transwestern.com](mailto:joe.karmin@transwestern.com)

**Justin Lerner, SIOR**  
Executive Vice President  
847.588.5665  
[justin.lerner@transwestern.com](mailto:justin.lerner@transwestern.com)

**Ross Lehrman**  
Senior Vice President  
847.588.5671  
[ross.lehrman@transwestern.com](mailto:ross.lehrman@transwestern.com)

The information provided herein was obtained from sources believed reliable; however, Transwestern makes no guarantees, warranties, or representations as to the completeness or accuracy thereof. The presentation of this information is submitted subject to errors, omissions, change of price or conditions, prior sale or lease, or withdrawal without notice. Copyright © 2025 Transwestern.

**INDUSTRIAL  
SPACE  
FOR LEASE**

**±2,476 -  
±5,600 SF**

**Well-maintained  
Multi-Tenant  
Facility**

**Close Proximity  
to I-294 at  
Lake Cook and  
Palatine Roads**

**Professionally owned by:**  
**J&L REAL PROPERTIES**

**TRANSWESTERN**  
REAL ESTATE  
SERVICES

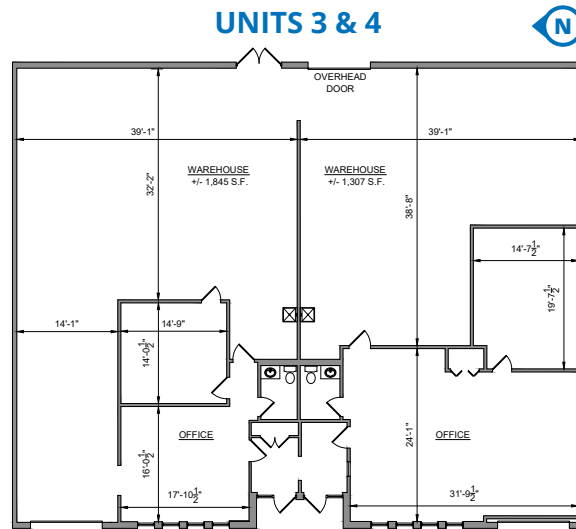
# 830 SETON COURT

Wheeling, IL 60090

[Property Website](#)

## FLOOR PLANS

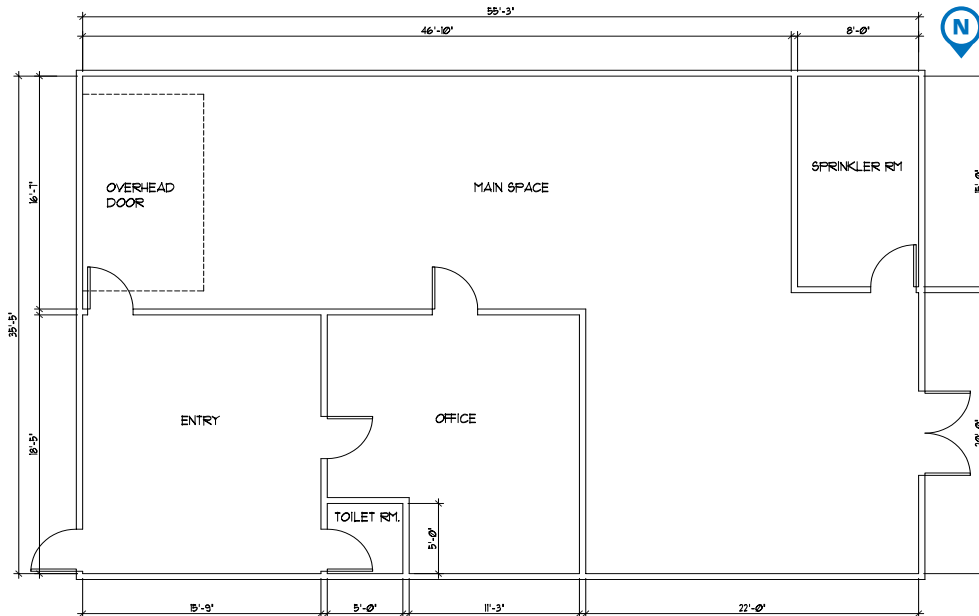
### UNITS 3 & 4



### UNIT 10

*Floor plan coming soon*

### UNIT 7



**Joe Karmin, SIOR**  
Executive Vice President  
847.588.5670  
[joe.karmin@transwestern.com](mailto:joe.karmin@transwestern.com)

**Justin Lerner, SIOR**  
Executive Vice President  
847.588.5665  
[justin.lerner@transwestern.com](mailto:justin.lerner@transwestern.com)

**Ross Lehrman**  
Senior Vice President  
847.588.5671  
[ross.lehrman@transwestern.com](mailto:ross.lehrman@transwestern.com)

The information provided herein was obtained from sources believed reliable; however, Transwestern makes no guarantees, warranties, or representations as to the completeness or accuracy thereof. The presentation of this information is submitted subject to errors, omissions, change of price or conditions, prior sale or lease, or withdrawal without notice. Copyright © 2025 Transwestern.