

±10,000 SF
INDUSTRIAL
SPACE
FOR LEASE

Renovation
Work
Underway

Open
Office
Layout

Excellent
Distribution &
Storage Space
Opportunity


TRANSWESTERN
REAL ESTATE
SERVICES

222 MARQUARDT DRIVE

Wheeling, IL 60090

[Property Website](#)

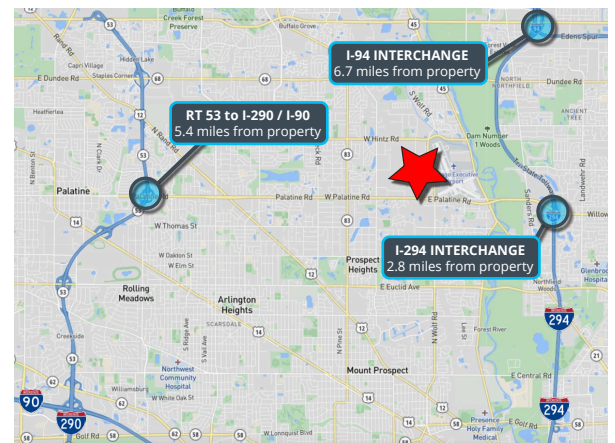


Specifications

- Building Size: ±30,000 SF
- Land Area: ±1.63 AC
- Available Size: ±10,000 SF
- Office Size: ±2,000 SF
- Ceiling Height: 15'
- Loading: 1 Dock / 1 DID
- Power: 400 Amps
- Parking: ±10 Cars
- Sprinklers: Wet
- Year Built: 1979
- Construction: Masonry
- Heating: Gas
- **Lease Rate: \$12.50 PSF MG**

Highlights

- Under new ownership
- Renovation work underway
- Located directly west of Chicago Executive Airport - PWK and I-294
- Open office layout
- Excellent distribution and storage space opportunity



Ross Lehrman
Vice President
847.588.5671
ross.lehrman@transwestern.com

Joe Karmin, SIOR
Executive Vice President
847.588.5670
joe.karmin@transwestern.com

Justin Lerner, SIOR
Executive Vice President
847.588.5665
justin.lerner@transwestern.com

The information provided herein was obtained from sources believed reliable; however, Transwestern makes no guarantees, warranties, or representations as to the completeness or accuracy thereof. The presentation of this information is submitted subject to errors, omissions, change of price or conditions, prior sale or lease, or withdrawal without notice. Copyright © 2024 Transwestern.

**±10,000 SF
INDUSTRIAL
SPACE
FOR LEASE**

Renovation
Work
Underway

Open
Office
Layout

Excellent
Distribution &
Storage Space
Opportunity



TRANSWESTERN

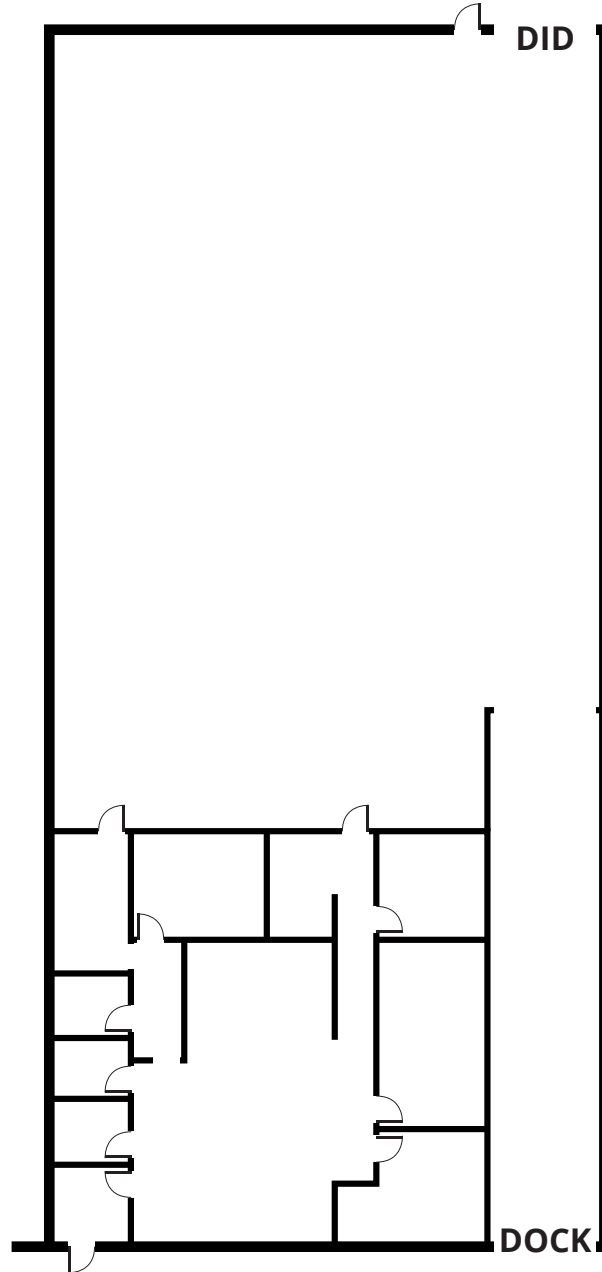
REAL ESTATE
SERVICES

222 MARQUARDT DRIVE

Wheeling, IL 60090

[Property Website](#)

SPACE LAYOUT



Ross Lehrman
Vice President
847.588.5671
ross.lehrman@transwestern.com

Joe Karmin, SIOR
Executive Vice President
847.588.5670
joe.karmin@transwestern.com

Justin Lerner, SIOR
Executive Vice President
847.588.5665
justin.lerner@transwestern.com

**±10,000 SF
INDUSTRIAL
SPACE
FOR LEASE**

Renovation
Work
Underway

Open
Office
Layout

Excellent
Distribution &
Storage Space
Opportunity



TRANSWESTERN

REAL ESTATE
SERVICES

222 MARQUARDT DRIVE

Wheeling, IL 60090

[Property Website](#)

PROPERTY AERIAL



Ross Lehrman
Vice President
847.588.5671
ross.lehrman@transwestern.com

Joe Karmin, SIOR
Executive Vice President
847.588.5670
joe.karmin@transwestern.com

Justin Lerner, SIOR
Executive Vice President
847.588.5665
justin.lerner@transwestern.com

The information provided herein was obtained from sources believed reliable; however, Transwestern makes no guarantees, warranties, or representations as to the completeness or accuracy thereof. The presentation of this information is submitted subject to errors, omissions, change of price or conditions, prior sale or lease, or withdrawal without notice. Copyright © 2024 Transwestern.