

**INDUSTRIAL  
BUILDING  
FOR SALE**

**±15,000 SF**

High Ceiling  
Height in  
Warehouse

Close Proximity  
to O'Hare  
Airport

  
**TRANSWESTERN**  
REAL ESTATE  
SERVICES

# 734-736 S. VERMONT STREET

Palatine, IL 60067  
[Property Website](#)



## SPECIFICATIONS

- Building Size: ±15,000 SF
- Land Area: ±0.94 AC
- Office Size: ±5,000 SF (incl. ±1,000 SF on 2<sup>nd</sup> floor)
- Ceiling Height: 17'5" Clear
- Loading: 3 Drive-in Doors
- Power: 400 Amps
- Parking: ±15 Cars
- Heating: Gas
- Construction: Masonry/Steel
- **Sale Price: \$95 PSF**

## HIGHLIGHTS

- Excellent drive-in door capabilities
- Floor drains in warehouse
- Immediate access to Rt. 53 and major expressways
- Close proximity to O'Hare Airport
- ±4,000 SF of office leased through Spring 2027 (can be terminated)
- High ceiling height in warehouse



**Ross Lehrman**  
Senior Vice President  
847.588.5671  
[ross.lehrman@transwestern.com](mailto:ross.lehrman@transwestern.com)

**Justin Lerner, SIOR**  
Executive Vice President  
847.588.5665  
[justin.lerner@transwestern.com](mailto:justin.lerner@transwestern.com)

**Joe Karmin, SIOR**  
Executive Vice President  
847.588.5670  
[joe.karmin@transwestern.com](mailto:joe.karmin@transwestern.com)

The information provided herein was obtained from sources believed reliable; however, Transwestern makes no guarantees, warranties, or representations as to the completeness or accuracy thereof. The presentation of this information is submitted subject to errors, omissions, change of price or conditions, prior sale or lease, or withdrawal without notice. Copyright © 2025 Transwestern.



**INDUSTRIAL  
BUILDING  
FOR SALE**

**±15,000 SF**

High Ceiling  
Height in  
Warehouse

Close Proximity  
to O'Hare  
Airport



**TRANSWESTERN**

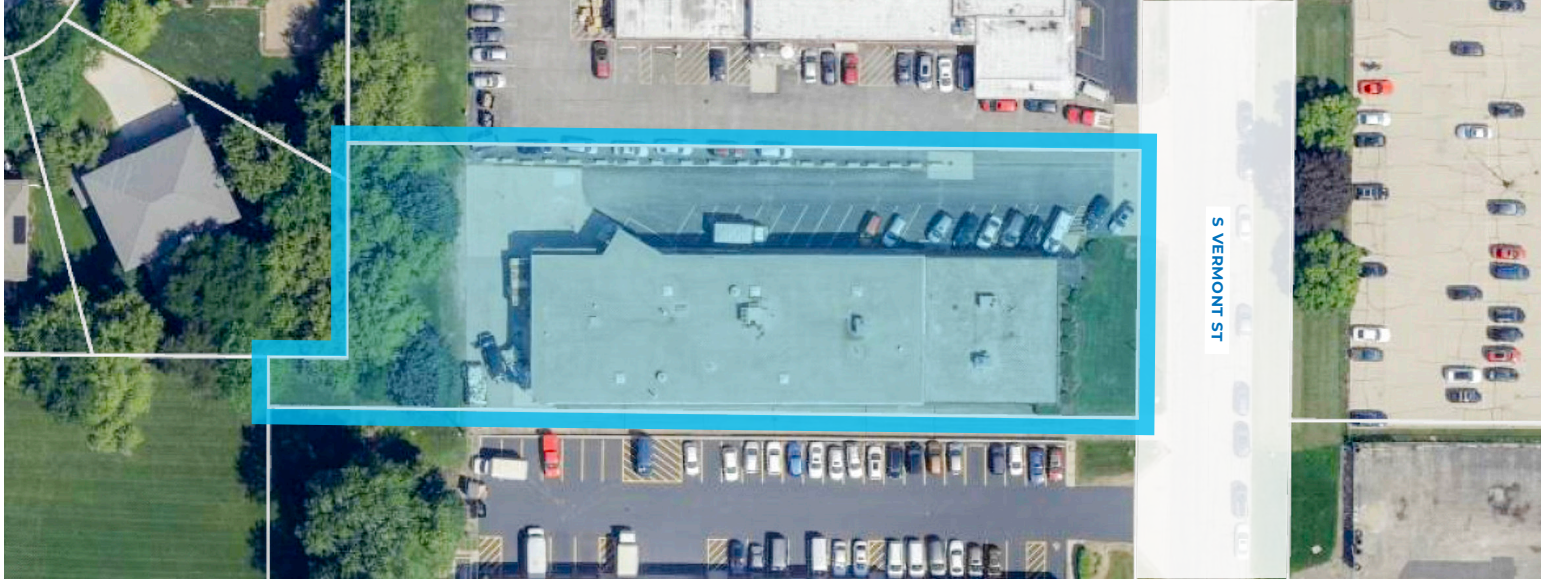
REAL ESTATE  
SERVICES

# 734-736 S. VERMONT STREET

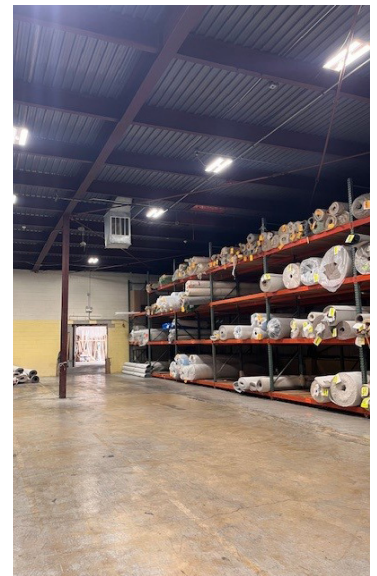
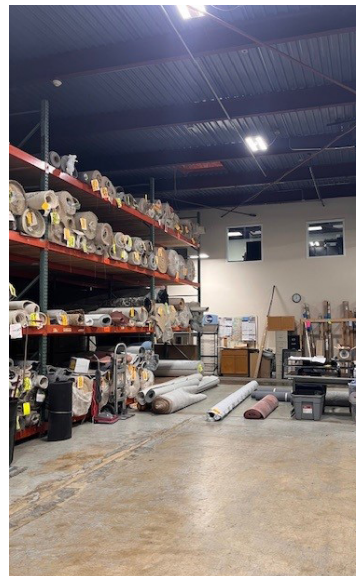
Palatine, IL 60067

[Property Website](#)

## PROPERTY AERIAL



## PROPERTY PHOTOS



**Ross Lehrman**  
Senior Vice President  
847.588.5671  
[ross.lehrman@transwestern.com](mailto:ross.lehrman@transwestern.com)

**Justin Lerner, SIOR**  
Executive Vice President  
847.588.5665  
[justin.lerner@transwestern.com](mailto:justin.lerner@transwestern.com)

**Joe Karmin, SIOR**  
Executive Vice President  
847.588.5670  
[joe.karmin@transwestern.com](mailto:joe.karmin@transwestern.com)

The information provided herein was obtained from sources believed reliable; however, Transwestern makes no guarantees, warranties, or representations as to the completeness or accuracy thereof. The presentation of this information is submitted subject to errors, omissions, change of price or conditions, prior sale or lease, or withdrawal without notice. Copyright © 2025 Transwestern.