

OFFICE /
RETAIL SPACE
AVAILABLE

±96,000 RSF
FOR LEASE

±19,500 RSF
Floor Plates

Divisible to
±5,000 RSF



TRANSWESTERN

REAL ESTATE
SERVICES

RIVERFRONT PLAZA

65 W. Webster Street, Joliet, IL 60432

[Property Website](#)

Property Photo



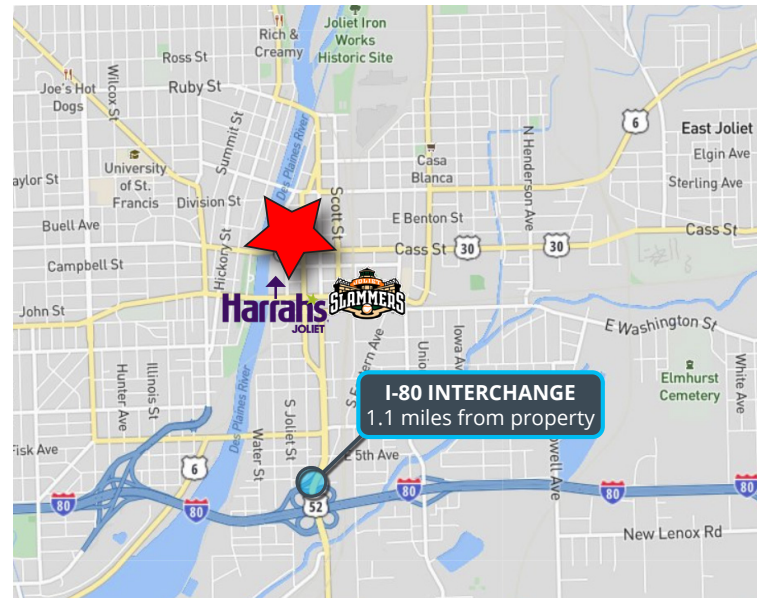
Highlights

- Ideal Corporate HQ Location
- Prominent Building Signage/Corporate Branding Opportunity
- Unobstructed Views Overlooking the Des Plaines River
- Efficient 19,500 RSF Floor Plates
- New Rooftop Deck
- Pace Bus Service to the Building
- Located off Historic Route 66 near I-80 Interchange
- Conveniently Located Near:
 - Harrah's Casino
 - DuPage Medical Group Field (Home of the Joliet Slammers)
 - Metra/Amtrak Station
 - Will County Circuit Court

Building Rendering



Location Map



Joe Stevens
Executive Vice President
847.840.8743
joseph.stevens@transwestern.com

Alex Genova, CPA
Vice President
847.588.5648
alex.genova@transwestern.com

The information provided herein was obtained from sources believed reliable; however, Transwestern makes no guarantees, warranties or representations as to the completeness of accuracy thereof. The presentation of this property is submitted subject to errors, omissions, change of price or conditions, prior to sale or lease, or withdrawal without notice. Copyright © 2021 Transwestern.

OFFICE /
RETAIL SPACE
AVAILABLE

±96,000 RSF
FOR LEASE

±19,500 RSF
Floor Plates

Divisible to
±5,000 RSF



TRANSWESTERN

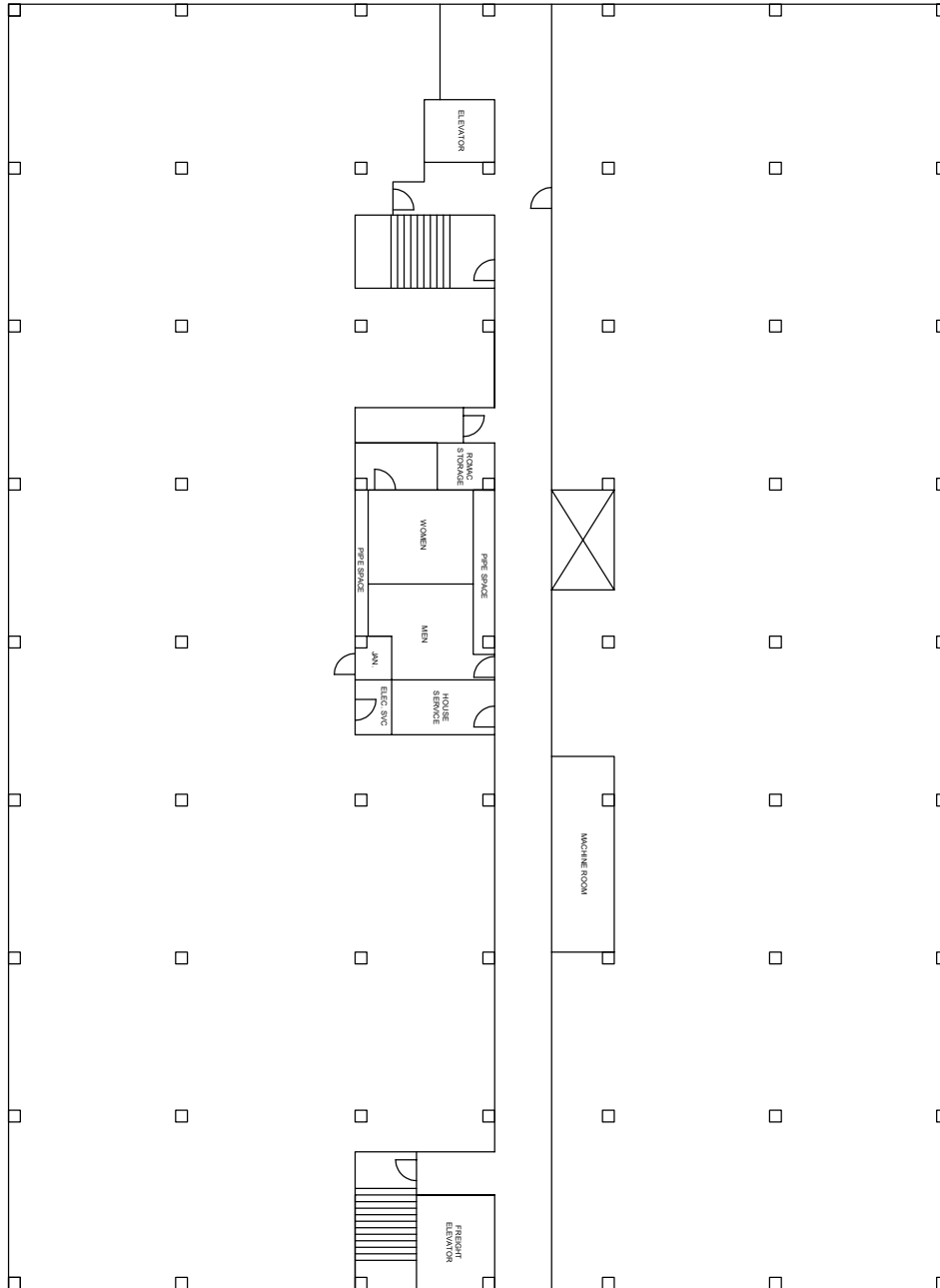
REAL ESTATE
SERVICES

RIVERFRONT PLAZA

65 W. Webster Street, Joliet, IL 60432

[Property Website](#)

Typical Floor Plan



Joe Stevens
Executive Vice President
847.840.8743
joseph.stevens@transwestern.com

Alex Genova, CPA
Vice President
847.588.5648
alex.genova@transwestern.com

The information provided herein was obtained from sources believed reliable; however, Transwestern makes no guarantees, warranties or representations as to the completeness of accuracy thereof. The presentation of this property is submitted subject to errors, omissions, change of price or conditions, prior to sale or lease, or withdrawal without notice. Copyright © 2021 Transwestern.