

±37,301 SF
**INDUSTRIAL
BUILDING
FOR LEASE**

High-image
Business Park

Spectacular
Office Space

Professionally
Owned and
Managed by:




TRANSWESTERN
REAL ESTATE
SERVICES

901 N. DUPAGE AVENUE

Lombard, IL 60148

[Property Website](#)

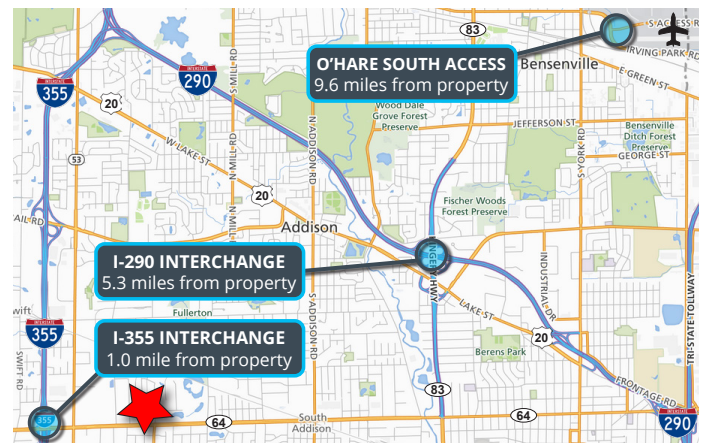


Specifications

- Building Size: ±37,301 SF
- Land Area: ±1.57 AC
- Office Size: ±3,906 SF
- Ceiling Height: ±18'8"
- Loading: 3 Int Docks / 1 DID
- Power: 800A 277/480V 3PH 4W
800A 120/208V 3PH 4W
- Parking: ±40 Cars
- Year Built: 1972
- Construction: Masonry/Metal
- **Lease Rate: Subject to Offer**

Highlights

- Spectacular office space
- High-image business park
- Well-maintained building
- Abundant parking
- Immediate access to I-355 and North Avenue
- Low DuPage County taxes
- Professionally owned and managed



Justin Lerner, SIOR
Executive Vice President
847.588.5665
justin.lerner@transwestern.com

Joe Karmin, SIOR
Executive Vice President
847.588.5670
joe.karmin@transwestern.com

Ross Lehrman
Vice President
847.588.5671
ross.lehrman@transwestern.com

±37,301 SF
INDUSTRIAL
BUILDING
FOR LEASE

High-image
Business Park

Spectacular
Office Space

Professionally
Owned and
Managed by:



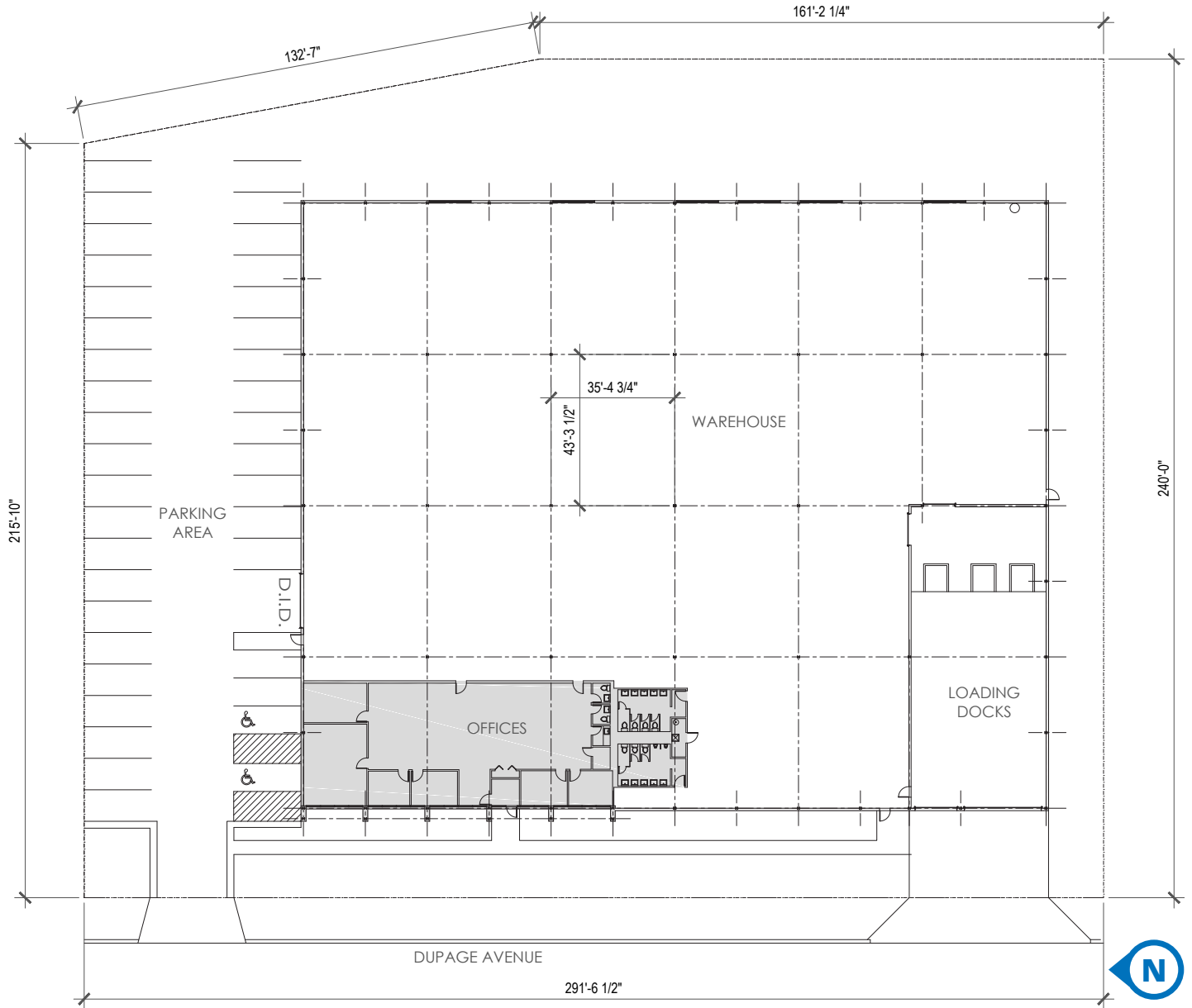

TRANSWESTERN
REAL ESTATE
SERVICES

901 N. DUPAGE AVENUE

Lombard, IL 60148

[Property Website](#)

SITE PLAN



Justin Lerner, SIOR
Executive Vice President
847.588.5665
justin.lerner@transwestern.com

Joe Karmin, SIOR
Executive Vice President
847.588.5670
joe.karmin@transwestern.com

Ross Lehrman
Vice President
847.588.5671
ross.lehrman@transwestern.com

±37,301 SF
INDUSTRIAL
BUILDING
FOR LEASE

High-image
Business Park

Spectacular
Office Space

Professionally
Owned and
Managed by:



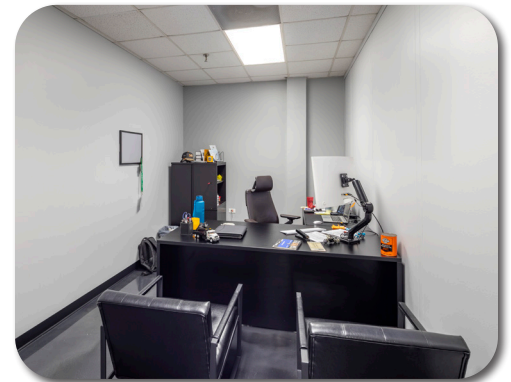
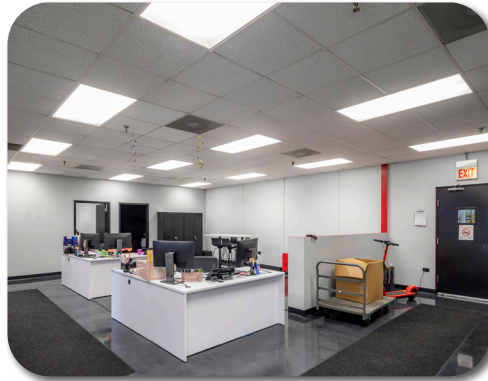
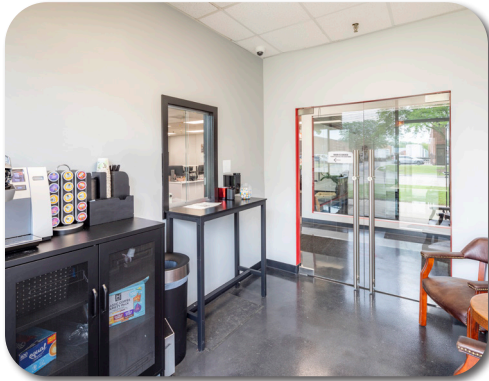

TRANSWESTERN
REAL ESTATE
SERVICES

901 N. DUPAGE AVENUE

Lombard, IL 60148

[Property Website](#)

PROPERTY PHOTOS



Justin Lerner, SIOR
Executive Vice President
847.588.5665
justin.lerner@transwestern.com

Joe Karmin, SIOR
Executive Vice President
847.588.5670
joe.karmin@transwestern.com

Ross Lehrman
Vice President
847.588.5671
ross.lehrman@transwestern.com

The information provided herein was obtained from sources believed reliable; however, Transwestern makes no guarantees, warranties, or representations as to the completeness or accuracy thereof. The presentation of this information is submitted subject to errors, omissions, change of price or conditions, prior sale or lease, or withdrawal without notice. Copyright © 2024 Transwestern.

±37,301 SF
INDUSTRIAL
BUILDING
FOR LEASE

High-image
Business Park

Spectacular
Office Space

Professionally
Owned and
Managed by:



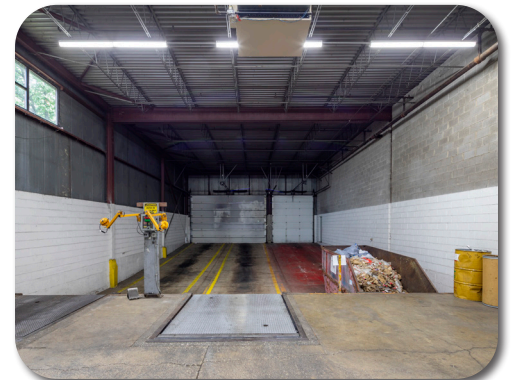
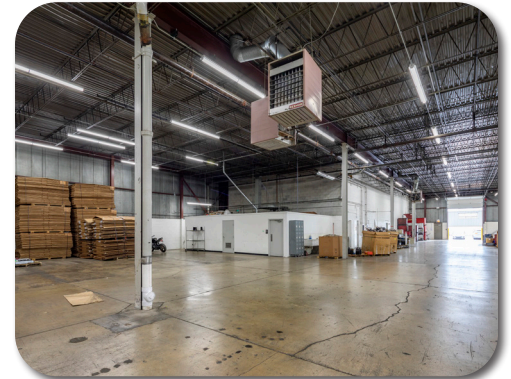
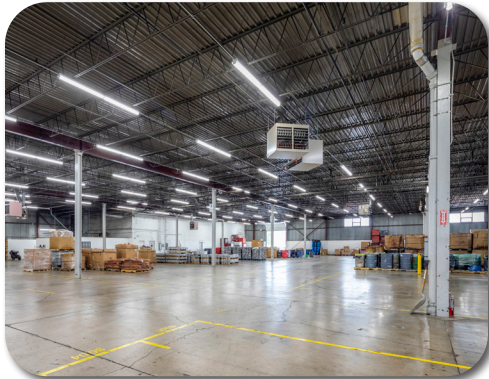

TRANSWESTERN
REAL ESTATE
SERVICES

901 N. DUPAGE AVENUE

Lombard, IL 60148

[Property Website](#)

PROPERTY PHOTOS



Justin Lerner, SIOR
Executive Vice President
847.588.5665
justin.lerner@transwestern.com

Joe Karmin, SIOR
Executive Vice President
847.588.5670
joe.karmin@transwestern.com

Ross Lehrman
Vice President
847.588.5671
ross.lehrman@transwestern.com

The information provided herein was obtained from sources believed reliable; however, Transwestern makes no guarantees, warranties, or representations as to the completeness or accuracy thereof. The presentation of this information is submitted subject to errors, omissions, change of price or conditions, prior sale or lease, or withdrawal without notice. Copyright © 2024 Transwestern.