

±17,104 SF
**INDUSTRIAL
SPACE
FOR LEASE**

Frontage Along
Wood Dale Rd

Direct Access to
O'Hare via I-390

Professionally
Owned and
Managed by:


WESTMOUNT
REALTY CAPITAL, LLC


TRANSWESTERN
REAL ESTATE
SERVICES

1360 WOOD DALE ROAD

Suite B, Wood Dale, IL 60191

[Property Website](#)

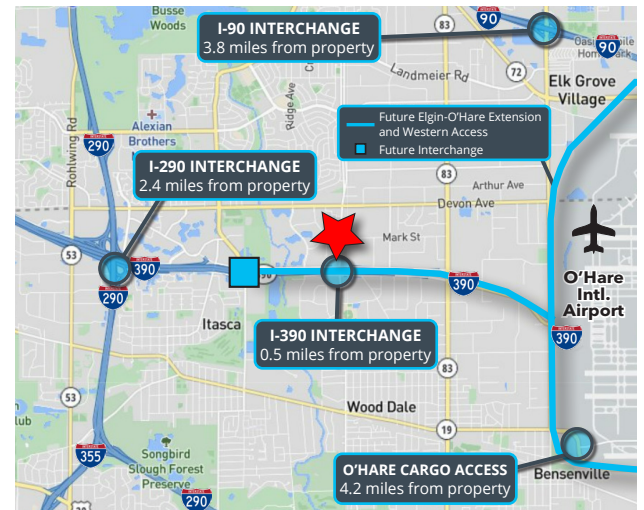


Specifications

- Building Size: ±60,269 SF
- Land Area: ±5.15 AC
- Available Size: ±17,104 SF
- Warehouse Size: ±11,706 SF
- Office Size: ±5,013 SF
- Warehouse Office: ±385 SF
- Ceiling Height: 12' Clear
- Loading: 5 Exterior Docks and 2 Ramped DIDs
- Year Built: 1989
- Construction: Masonry
- CAM: \$1.98 PSF
- INS: \$0.12 PSF
- RET: \$2.99 PSF
- **Lease Rate: Subject to Offer**

Highlights

- High-image space
- New LED lighting
- Professionally owned and managed
- Abundant parking available
- Frontage along Wood Dale Rd.
- Direct access to O'Hare via I-390
- Low DuPage County taxes



Ross Lehrman
Vice President
847.588.5671
ross.lehrman@transwestern.com

Justin Lerner, SIOR
Executive Vice President
847.588.5665
justin.lerner@transwestern.com

The information provided herein was obtained from sources believed reliable; however, Transwestern makes no guarantees, warranties or representations as to the completeness of accuracy thereof. The presentation of this property is submitted subject to errors, omissions, change of price or conditions, prior to sale or lease, or withdrawal without notice. Copyright © 2024 Transwestern.

±17,104 SF
INDUSTRIAL
SPACE
FOR LEASE

Frontage Along
Wood Dale Rd

Direct Access to
O'Hare via I-390

Professionally
Owned and
Managed by:


WESTMOUNT
REALTY CAPITAL, LLC

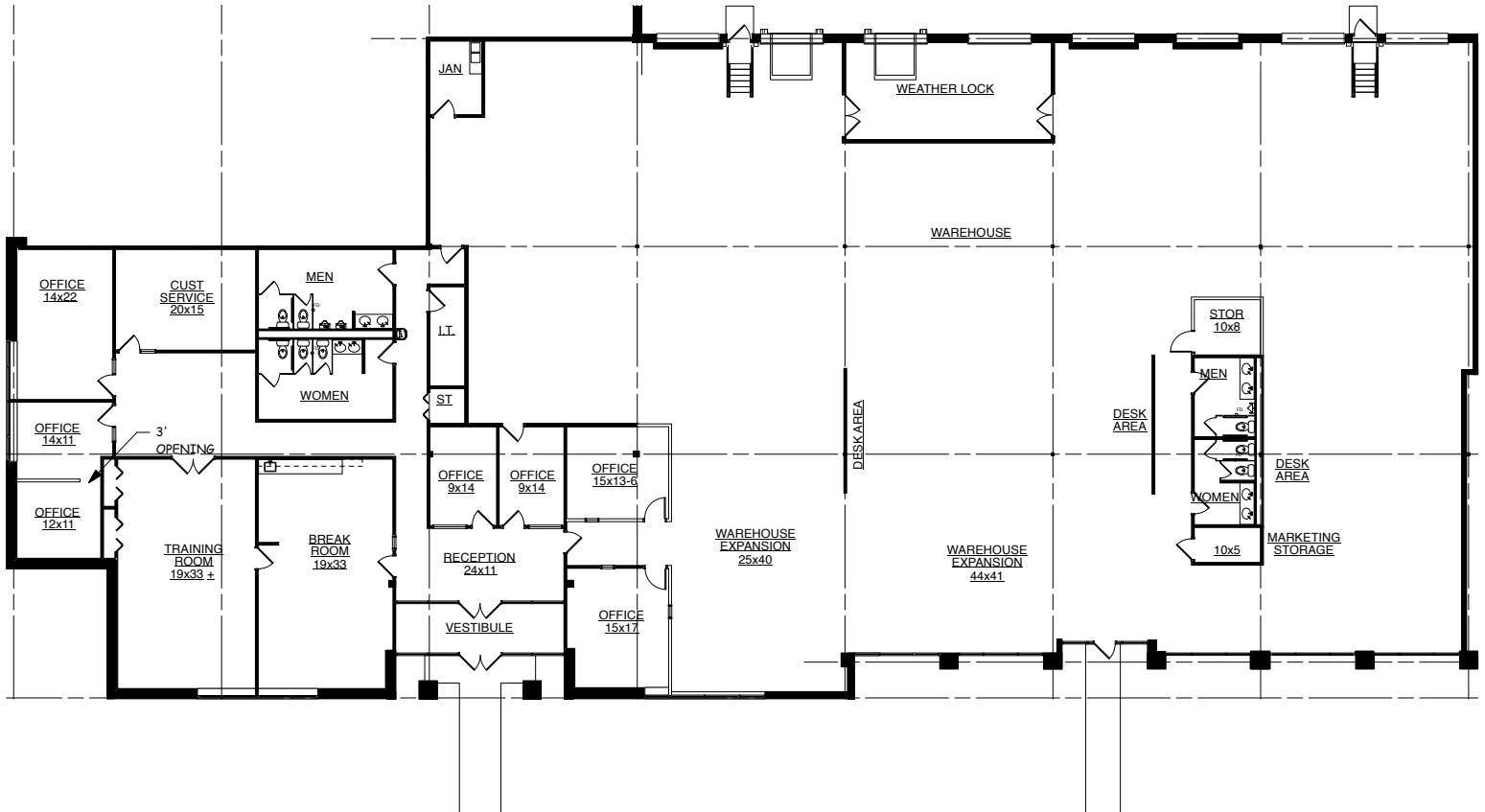

TRANSWESTERN
REAL ESTATE
SERVICES

1360 WOOD DALE ROAD

Suite B, Wood Dale, IL 60191

[Property Website](#)

FLOOR PLAN



Ross Lehrman
Vice President
847.588.5671
ross.lehrman@transwestern.com

Justin Lerner, SIOR
Executive Vice President
847.588.5665
justin.lerner@transwestern.com

The information provided herein was obtained from sources believed reliable; however, Transwestern makes no guarantees, warranties or representations as to the completeness of accuracy thereof. The presentation of this property is submitted subject to errors, omissions, change of price or conditions, prior to sale or lease, or withdrawal without notice. Copyright © 2024 Transwestern.