

**INDUSTRIAL
BUILDING
FOR LEASE**

±15,000 SF

Available
12/1/2023

Drive-through
Capability



TRANSWESTERN

REAL ESTATE
SERVICES

1814 PICKWICK AVENUE

Glenview, IL 60026

[Property Website](#)

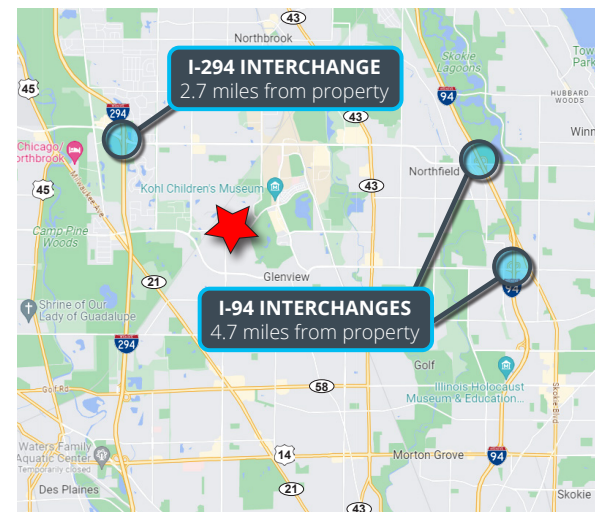


Specifications

- Building Size: ±15,000 SF
- Land Area: ±0.82 AC
- Office Size: ±650 SF
- Ceiling Height: ±14' - 21'6"
- Loading: 4 Drive-in Doors
- Power: 200 Amps
- Parking: ±30 Cars
- Year Built: 1983
- Heating: Gas
- Construction: Masonry
- Lease Rate: \$15.50 PSF MG

Highlights

- Available 12/1/2023
- Drive-through capability
- Located near the traffic light at W Lake Ave (11,000 VPD) and Greenwood Rd (13,000 VPD)
- Less than 10 minutes from I-294 at Willow Rd
- ±4.7 miles from I-94 at either Willow Rd or Lake Ave
- Just one mile from restaurants and shopping at The Glen Town Center



Joe Stevens
Executive Vice President
847.840.8743

joe.stevens@transwestern.com

Joe Karmin, SIOR
Executive Vice President
847.588.5670

joe.karmin@transwestern.com

The information provided herein was obtained from sources believed reliable; however, Transwestern makes no guarantees, warranties, or representations as to the completeness or accuracy thereof. The presentation of this information is submitted subject to errors, omissions, change of price or conditions, prior sale or lease, or withdrawal without notice. Copyright © 2024 Transwestern.

**INDUSTRIAL
BUILDING
FOR LEASE**

±15,000 SF

Available
12/1/2023

Drive-through
Capability



TRANSWESTERN

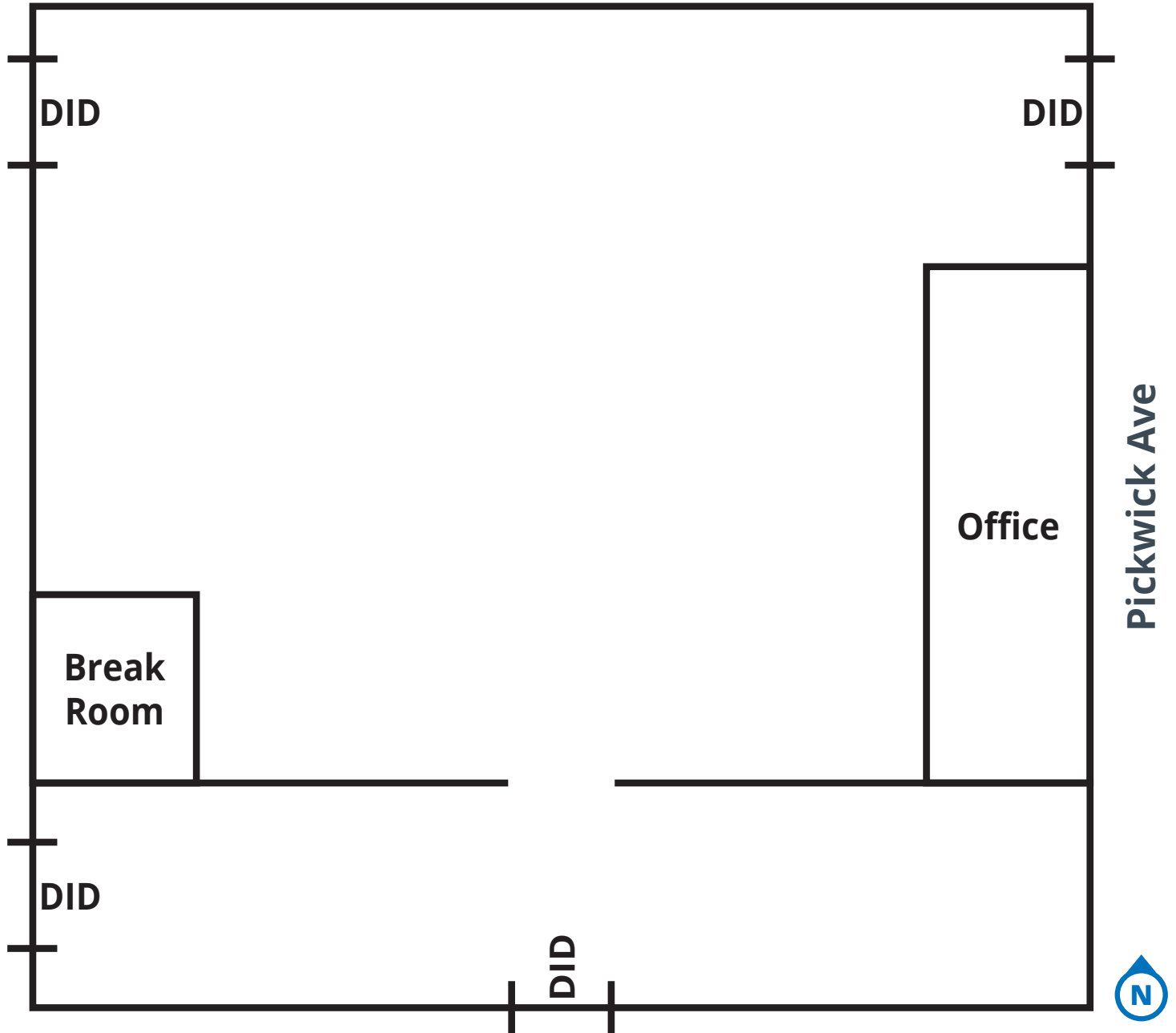
REAL ESTATE
SERVICES

1814 PICKWICK AVENUE

Glenview, IL 60026

[Property Website](#)

FLOOR PLAN



Joe Stevens

Executive Vice President

847.840.8743

joe.stevens@transwestern.com

Joe Karmin, SIOR

Executive Vice President

847.588.5670

joe.karmin@transwestern.com

The information provided herein was obtained from sources believed reliable; however, Transwestern makes no guarantees, warranties, or representations as to the completeness or accuracy thereof. The presentation of this information is submitted subject to errors, omissions, change of price or conditions, prior sale or lease, or withdrawal without notice. Copyright © 2024 Transwestern.

**INDUSTRIAL
BUILDING
FOR LEASE**

±15,000 SF

Available
12/1/2023

Drive-through
Capability



TRANSWESTERN

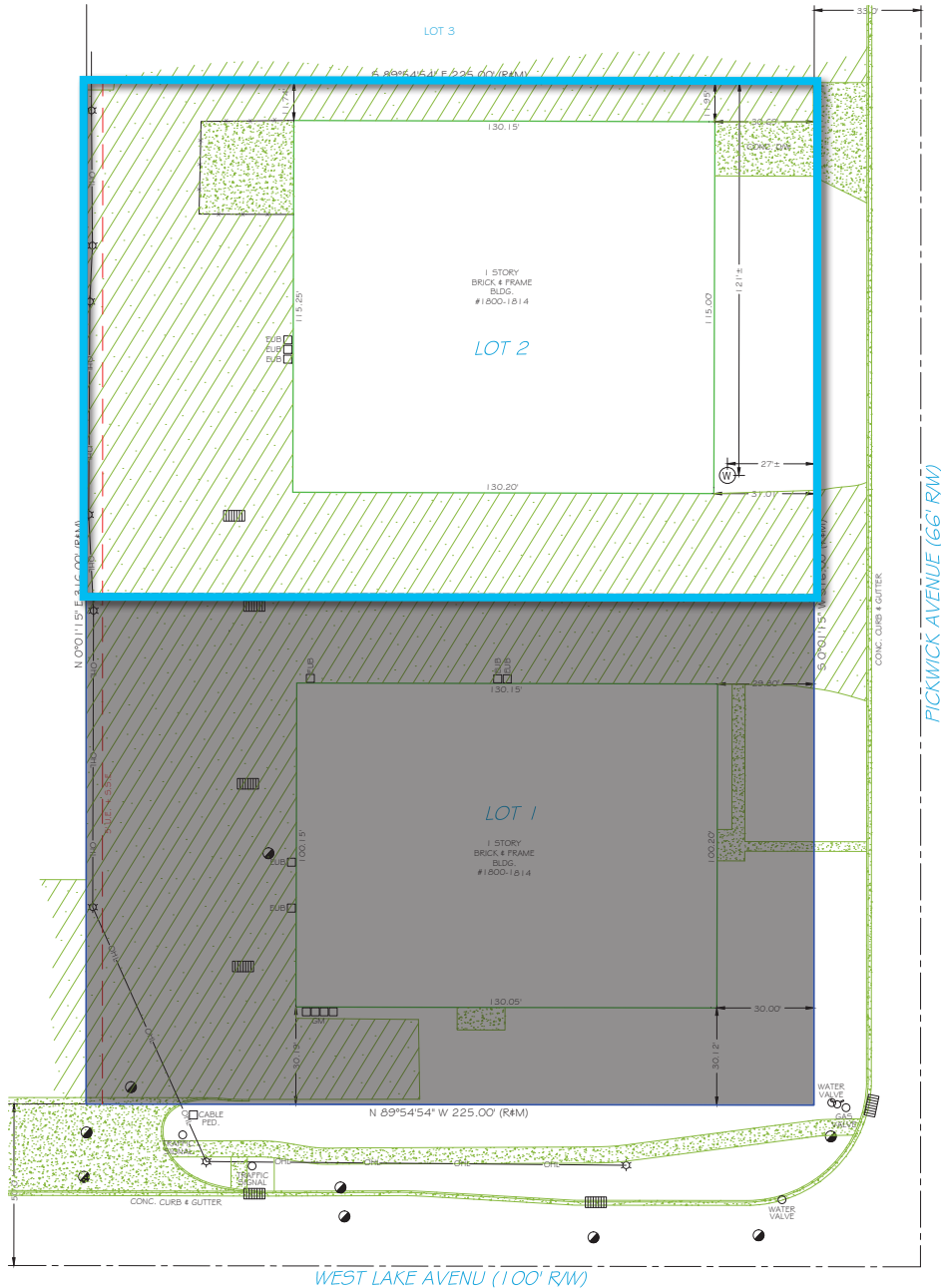
REAL ESTATE
SERVICES

1814 PICKWICK AVENUE

Glenview, IL 60026

[Property Website](#)

SITE PLAN



Joe Stevens
Executive Vice President
847.840.8743

joe.stevens@transwestern.com

Joe Karmin, SIOR
Executive Vice President
847.588.5670

joe.karmin@transwestern.com

The information provided herein was obtained from sources believed reliable; however, Transwestern makes no guarantees, warranties, or representations as to the completeness or accuracy thereof. The presentation of this information is submitted subject to errors, omissions, change of price or conditions, prior sale or lease, or withdrawal without notice. Copyright © 2024 Transwestern.

**INDUSTRIAL
BUILDING
FOR LEASE**

±15,000 SF

Available
12/1/2023

Drive-through
Capability



TRANSWESTERN

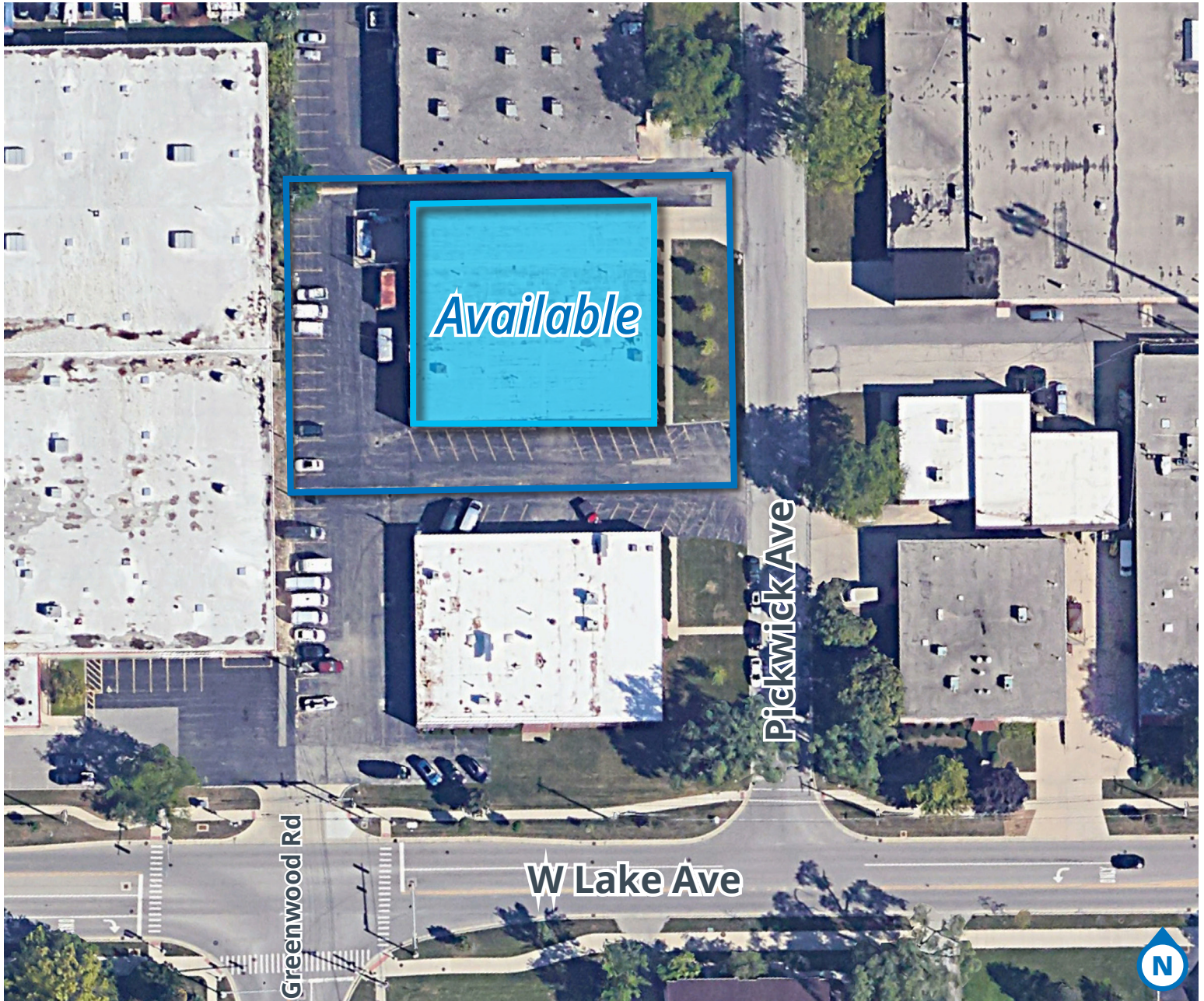
REAL ESTATE
SERVICES

1814 PICKWICK AVENUE

Glenview, IL 60026

[Property Website](#)

AERIAL VIEW



Joe Stevens

Executive Vice President

847.840.8743

joe.stevens@transwestern.com

Joe Karmin, SIOR

Executive Vice President

847.588.5670

joe.karmin@transwestern.com

The information provided herein was obtained from sources believed reliable; however, Transwestern makes no guarantees, warranties, or representations as to the completeness or accuracy thereof. The presentation of this information is submitted subject to errors, omissions, change of price or conditions, prior sale or lease, or withdrawal without notice. Copyright © 2024 Transwestern.