

**INDUSTRIAL
SPACE
FOR LEASE**

±2,533 SF

High-Image
Business
Park

Immediate
Access to
I-355 and
North Ave.

Professionally Owned
and Managed by:



TRANSWESTERN
REAL ESTATE
SERVICES

954 N. DUPAGE AVENUE

Lombard, IL 60148

[Property Website](#)

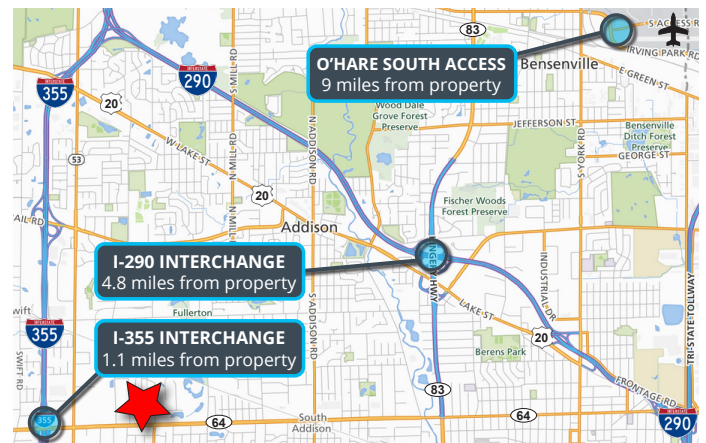


Specifications

- Building Size: ±17,871 SF
- Available Size: ±2,533 SF
- Office Size: ±706 SF
- Ceiling Height: ±14' Clear
- Loading: 1 Drive-in Door
- Power: 400A 3PH
- Year Built: 1988
- Construction: Masonry
- RE Taxes: \$2.19 PSF (2023)
- **Lease Rate: Subject to Offer**

Highlights

- High-image business park
- Hard-to-find smaller unit with abundant parking
- Well-maintained
- Immediate access to I-355 and North Avenue
- Low DuPage County taxes
- Professionally owned and managed



Ross Lehrman
Senior Vice President
847.588.5671
ross.lehrman@transwestern.com

Joe Karmin, SIOR
Executive Vice President
847.588.5670
joe.karmin@transwestern.com

Justin Lerner, SIOR
Executive Vice President
847.588.5665
justin.lerner@transwestern.com

The information provided herein was obtained from sources believed reliable; however, Transwestern makes no guarantees, warranties, or representations as to the completeness or accuracy thereof. The presentation of this information is submitted subject to errors, omissions, change of price or conditions, prior sale or lease, or withdrawal without notice. Copyright © 2025 Transwestern.

**INDUSTRIAL
SPACE
FOR LEASE**

±2,533 SF

High-Image
Business
Park

Immediate
Access to
I-355 and
North Ave.

Professionally Owned
and Managed by:

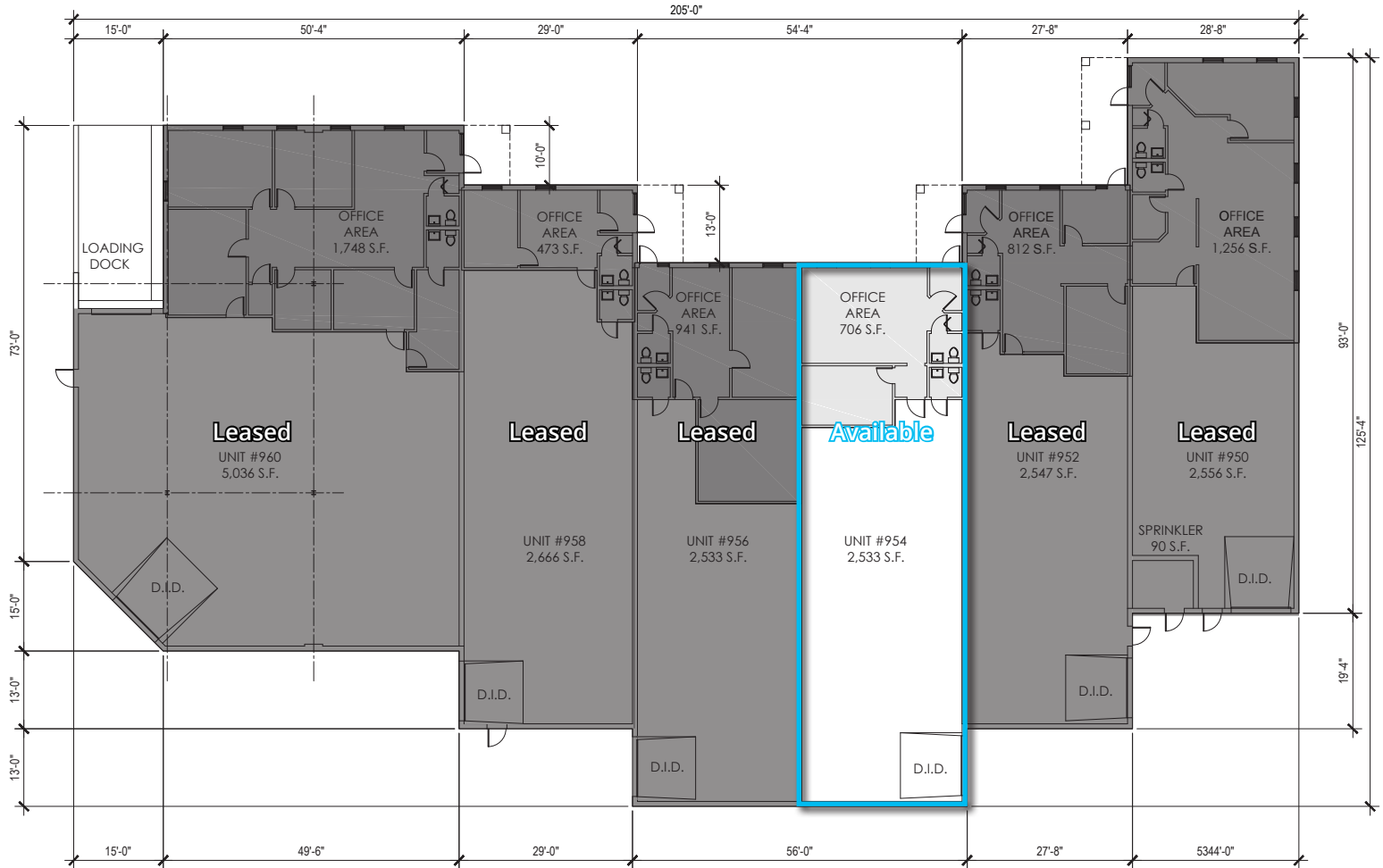


TRANSWESTERN
REAL ESTATE
SERVICES

954 N. DUPAGE AVENUE

Lombard, IL 60148
[Property Website](#)

BUILDING PLAN



Ross Lehrman
Senior Vice President
847.588.5671
ross.lehrman@transwestern.com

Joe Karmin, SIOR
Executive Vice President
847.588.5670
joe.karmin@transwestern.com

Justin Lerner, SIOR
Executive Vice President
847.588.5665
justin.lerner@transwestern.com