

INDUSTRIAL/
FLEX SPACE
FOR LEASE

±10,647 SF

Immediate
Access to
I-355 via
North Ave.

Professionally
Owned and
Managed by:




TRANSWESTERN
REAL ESTATE
SERVICES

901 S. ROHLWING ROAD

Suite G, Addison, IL 60101

[Property Website](#)

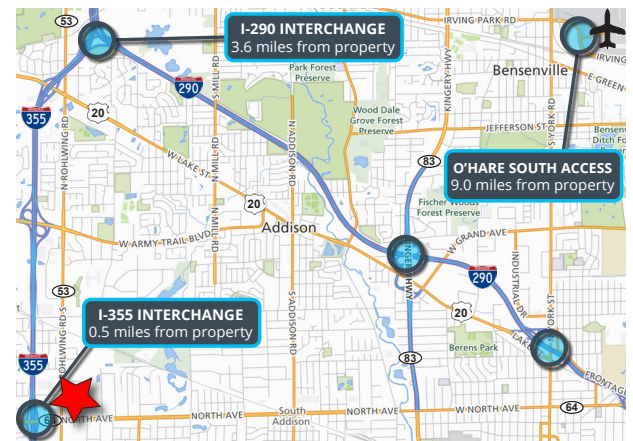


Specifications

- Building Size: ±133,892 SF
- Land Area: ±7.44 AC
- Available Size: ±10,647 SF
- Office Size: ±5,912 SF
- Ceiling Height: ±18'
- Loading Docks: 3 Shared Int.
- Drive-in Doors: 1 Private
- Parking: ±20 Cars
- Year Built: 1988
- Construction: Tilt-Up
- **Sublease Rate: Subject to Offer**

Highlights

- Office can be reduced
- Immediate access to I-355 via North Avenue (Route 64)
- Close proximity to other major highways
- Low DuPage County taxes
- Professionally owned and managed



Ross Lehrman
Vice President
847.588.5671
ross.lehrman@transwestern.com

Joe Karmin, SIOR
Executive Vice President
847.588.5670
joe.karmin@transwestern.com

Justin Lerner, SIOR
Executive Vice President
847.588.5665
justin.lerner@transwestern.com

**INDUSTRIAL/
FLEX SPACE
FOR LEASE**

±10,647 SF

Immediate
Access to
I-355 via
North Ave.

Professionally
Owned and
Managed by:



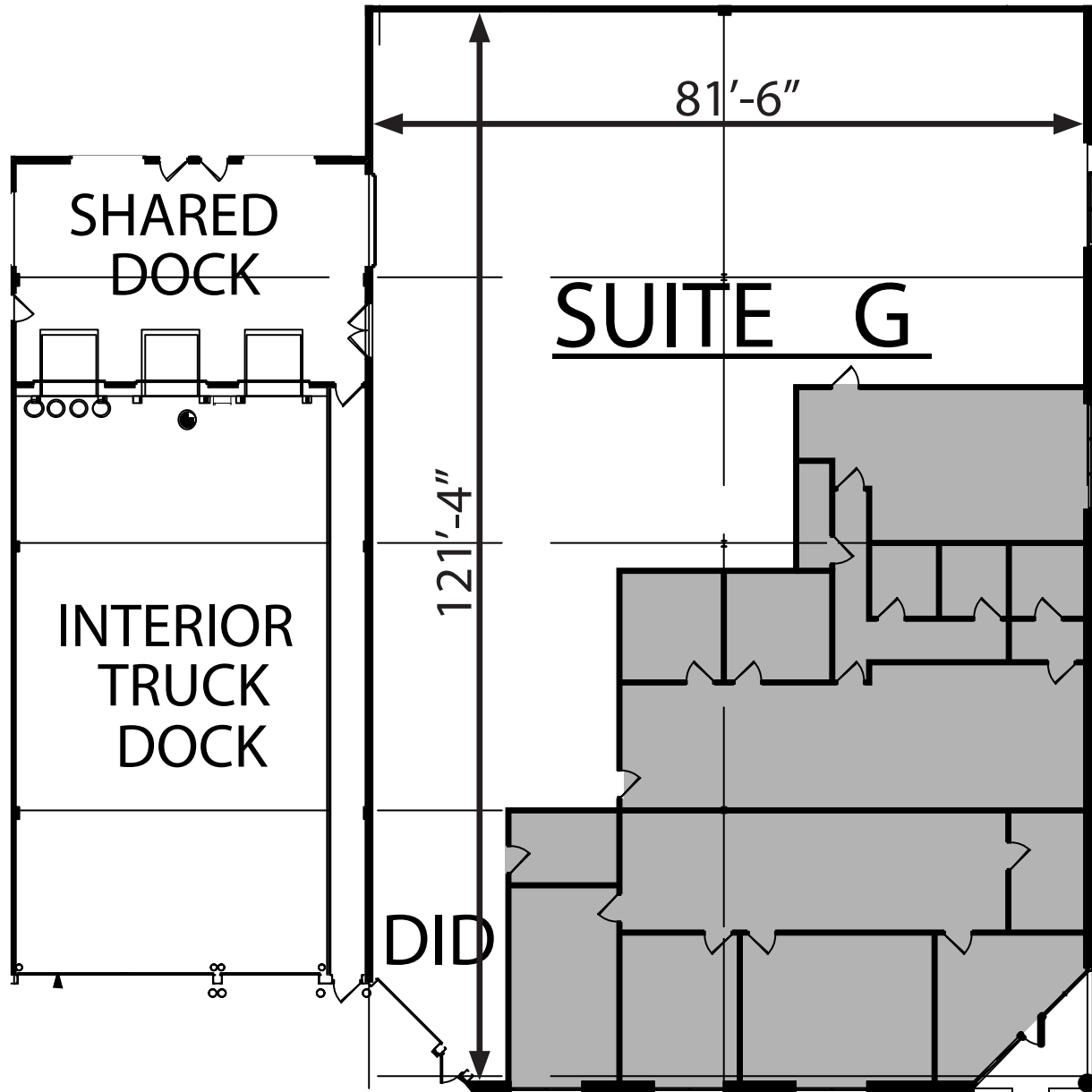
TRANSWESTERN
REAL ESTATE
SERVICES

901 S. ROHLWING ROAD

Suite G, Addison, IL 60101

[Property Website](#)

SUITE LAYOUT



Ross Lehrman
Vice President
847.588.5671
ross.lehrman@transwestern.com

Joe Karmin, SIOR
Executive Vice President
847.588.5670
joe.karmin@transwestern.com

Justin Lerner, SIOR
Executive Vice President
847.588.5665
justin.lerner@transwestern.com

**INDUSTRIAL/
FLEX SPACE
FOR LEASE**

±10,647 SF

Immediate
Access to
I-355 via
North Ave.

Professionally
Owned and
Managed by:



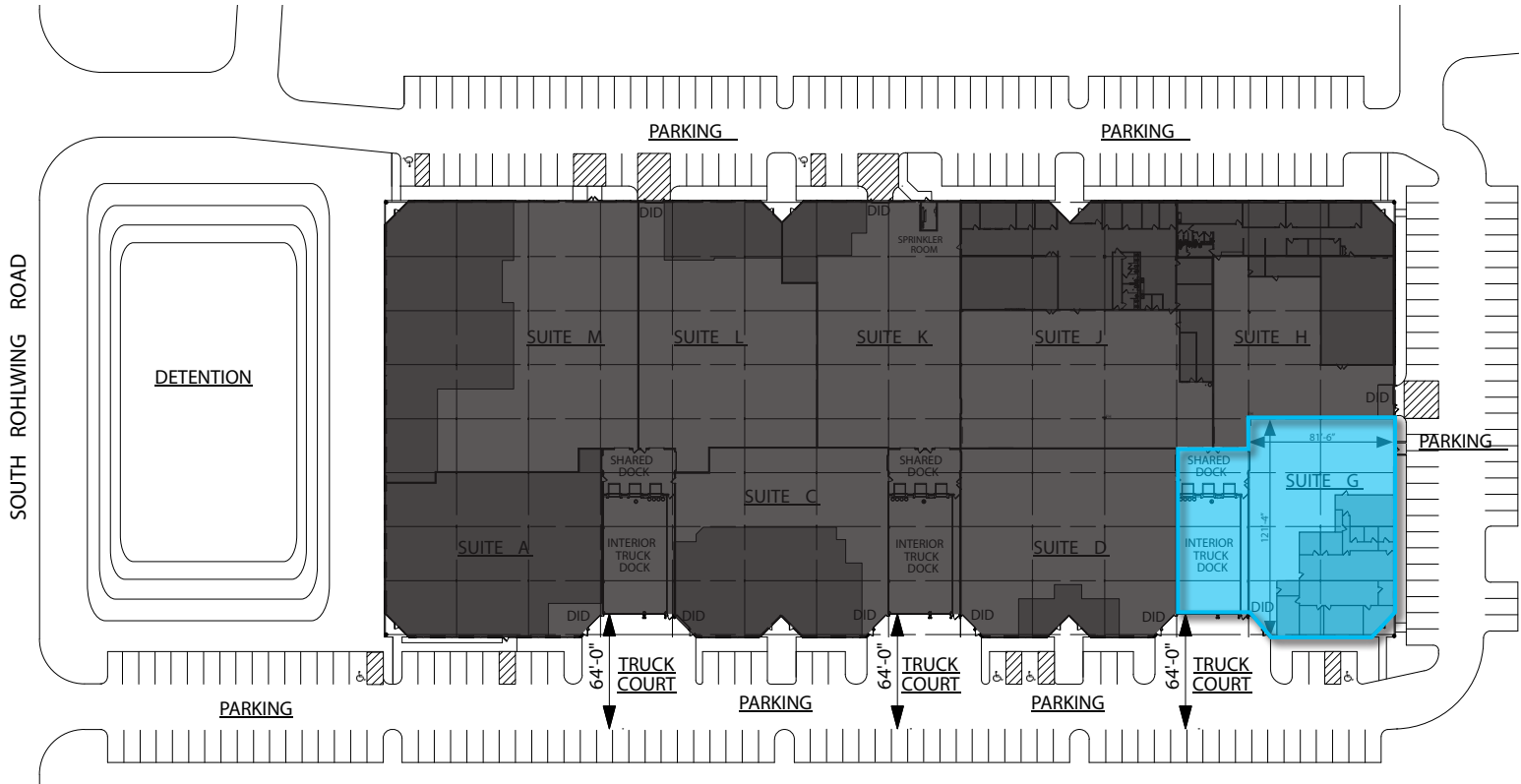
TRANSWESTERN
REAL ESTATE
SERVICES

901 S. ROHLWING ROAD

Suite G, Addison, IL 60101

[Property Website](#)

BUILDING LAYOUT



Ross Lehrman
Vice President
847.588.5671
ross.lehrman@transwestern.com

Joe Karmin, SIOR
Executive Vice President
847.588.5670
joe.karmin@transwestern.com

Justin Lerner, SIOR
Executive Vice President
847.588.5665
justin.lerner@transwestern.com

The information provided herein was obtained from sources believed reliable; however, Transwestern makes no guarantees, warranties, or representations as to the completeness or accuracy thereof. The presentation of this information is submitted subject to errors, omissions, change of price or conditions, prior sale or lease, or withdrawal without notice. Copyright © 2024 Transwestern.