

±2,925 SF
**INDUSTRIAL
SPACE
FOR LEASE**

Corner
Unit

Close
Proximity to
O'Hare Airport

Institutionally
Owned and
Managed by:



TRANSWESTERN
REAL ESTATE
SERVICES

141 BERNICE DRIVE

Bensenville, IL 60106

[Property Website](#)

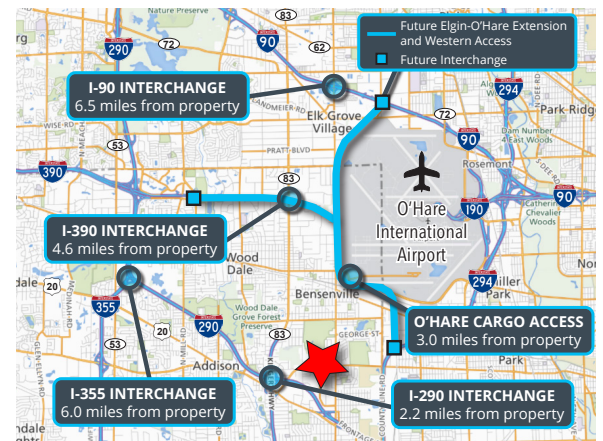


Specifications

- Building Size: ±11,700 SF
- Land Area: ±0.84 AC
- Available Size: ±2,925 SF
- Office Size: ±1,800 SF
- Ceiling Height: 14'
- Loading: 1 Drive-in-Door
- Parking: ±9 Cars
- Year Built: 1984
- Construction: Masonry
- **Lease Rate: Subject to Offer**

Highlights

- Under new ownership
- Well-maintained corner unit
- Office can be scaled down
- Available 6/1/2024
- Direct access to major expressways
- Close proximity to O'Hare Airport
- Low DuPage County taxes
- Institutionally owned and managed by Faropoint



Ross Lehrman
Vice President
847.588.5671
ross.lehrman@transwestern.com

Joe Karmin, SIOR
Executive Vice President
847.588.5670
joe.karmin@transwestern.com

Justin Lerner, SIOR
Executive Vice President
847.588.5665
justin.lerner@transwestern.com

±2,925 SF
INDUSTRIAL
SPACE
FOR LEASE

Corner
Unit

Close
Proximity to
O'Hare Airport

Institutionally
Owned and
Managed by:



TRANSWESTERN
REAL ESTATE
SERVICES

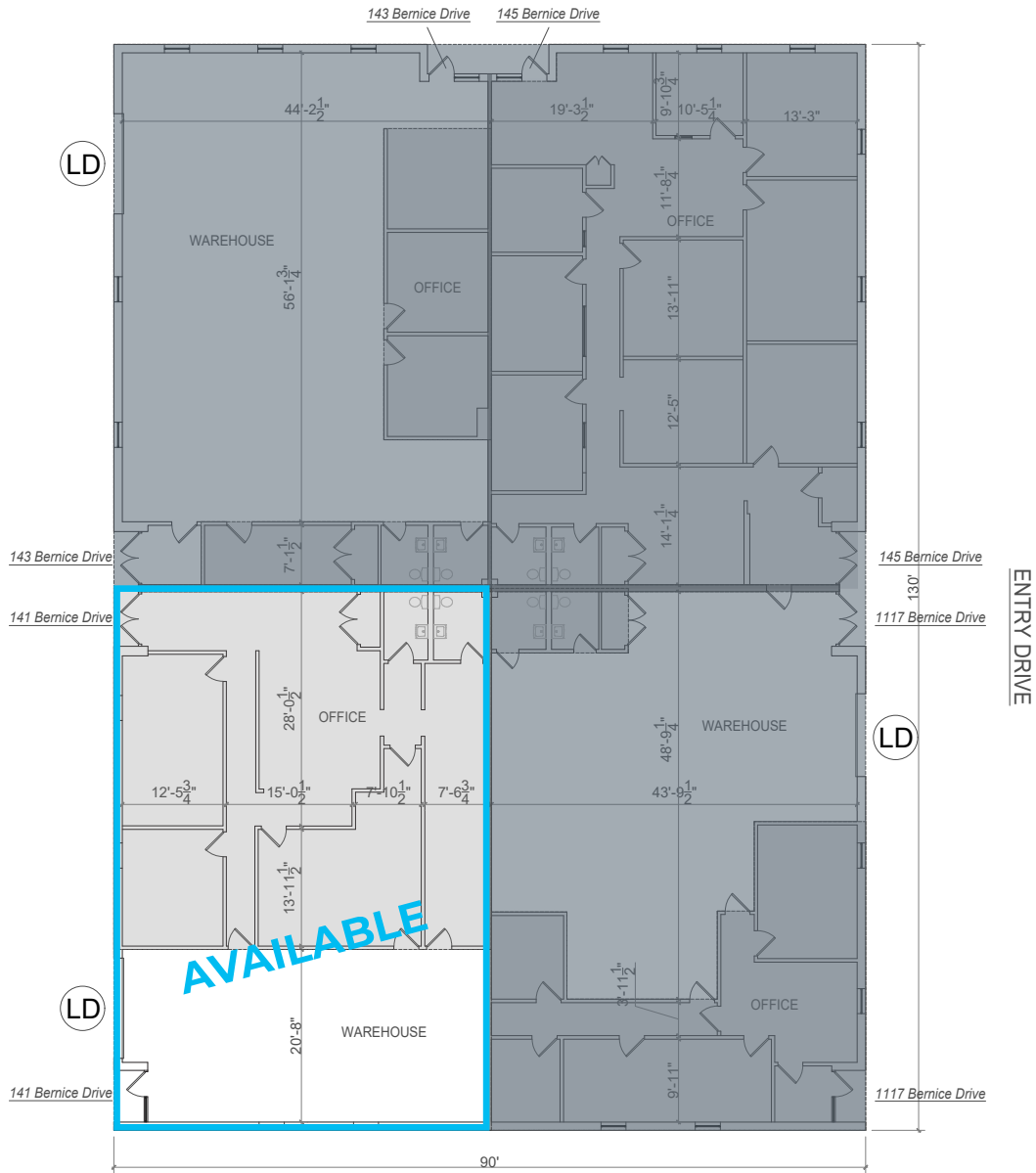
141 BERNICE DRIVE

Bensenville, IL 60106

[Property Website](#)

FLOOR PLAN

BERNICE DRIVE



Ross Lehrman
Vice President
847.588.5671
ross.lehrman@transwestern.com

Joe Karmin, SIOR
Executive Vice President
847.588.5670
joe.karmin@transwestern.com

Justin Lerner, SIOR
Executive Vice President
847.588.5665
justin.lerner@transwestern.com