

**INDUSTRIAL  
SPACE  
FOR LEASE**

**±4,962 SF**

Available  
Immediately

Dedicated  
Drive-in Door



**TRANSWESTERN**

REAL ESTATE  
SERVICES

# 1800 PICKWICK AVENUE

Glenview, IL 60026

[Property Website](#)

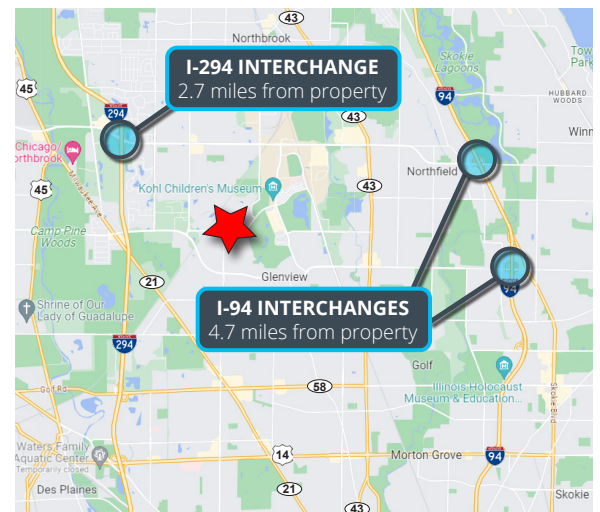


## Specifications

- Building Size: ±13,000 SF
- Land Area: ±0.82 AC
- Available Size: ±4,962 SF
- Ceiling Height: ±13'
- Loading: 1 Drive-in Door
- Power: 200 Amps
- Parking: ±8 Cars
- Year Built: 1977
- Heating: Gas
- Construction: Masonry
- **Lease Rate: \$13.75 PSF MG**

## Highlights

- Available immediately
- Dedicated drive-in door
- All warehouse (no office)
- Corner building located near the traffic light at W Lake Ave (11,000 VPD) and Greenwood Rd (13,000 VPD)
- Less than 10 minutes from I-294 at Willow Rd
- ±4.7 miles from I-94 at either Willow Rd or Lake Ave
- Just one mile from restaurants and shopping at The Glen Town Center



**Joe Stevens**  
Executive Vice President  
847.840.8743

[joe.stevens@transwestern.com](mailto:joe.stevens@transwestern.com)

**Joe Karmin, SIOR**  
Executive Vice President  
847.588.5670

[joe.karmin@transwestern.com](mailto:joe.karmin@transwestern.com)

The information provided herein was obtained from sources believed reliable; however, Transwestern makes no guarantees, warranties, or representations as to the completeness or accuracy thereof. The presentation of this information is submitted subject to errors, omissions, change of price or conditions, prior sale or lease, or withdrawal without notice. Copyright © 2024 Transwestern.

**INDUSTRIAL  
SPACE  
FOR LEASE**

**±4,962 SF**

Available  
Immediately

Dedicated  
Drive-in Door



**TRANSWESTERN**

REAL ESTATE  
SERVICES

# 1800 PICKWICK AVENUE

Glenview, IL 60026

[Property Website](#)

## FLOOR PLAN



**Pickwick Ave**



**Joe Stevens**

*Executive Vice President*

847.840.8743

joe.stevens@transwestern.com

**Joe Karmin, SIOR**

*Executive Vice President*

847.588.5670

joe.karmin@transwestern.com

The information provided herein was obtained from sources believed reliable; however, Transwestern makes no guarantees, warranties, or representations as to the completeness or accuracy thereof. The presentation of this information is submitted subject to errors, omissions, change of price or conditions, prior sale or lease, or withdrawal without notice. Copyright © 2024 Transwestern.

**INDUSTRIAL  
SPACE  
FOR LEASE**

**±4,962 SF**

Available  
Immediately

Dedicated  
Drive-in Door



**TRANSWESTERN**

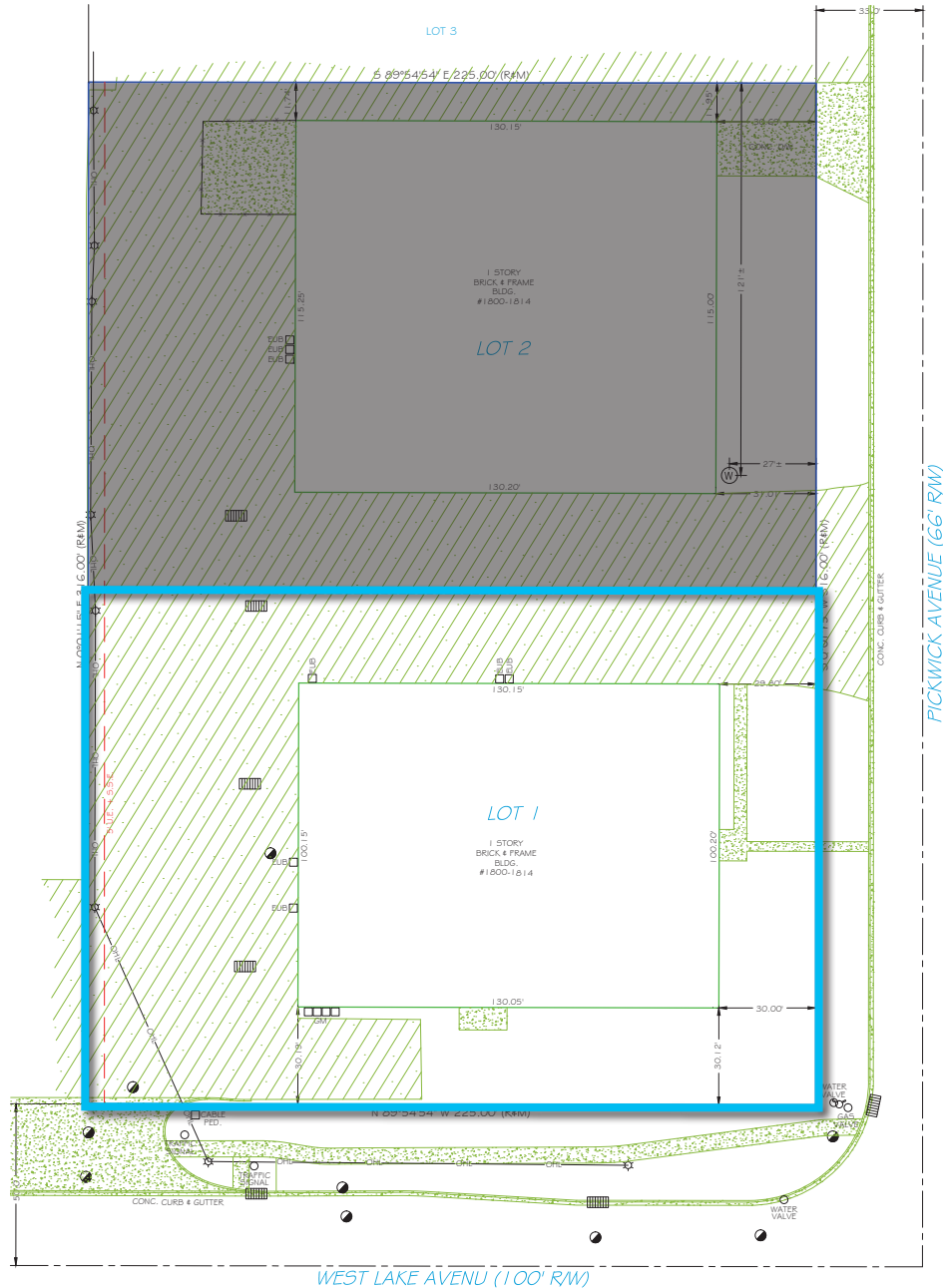
REAL ESTATE  
SERVICES

# 1800 PICKWICK AVENUE

Glenview, IL 60026

[Property Website](#)

## SITE PLAN



**Joe Stevens**  
Executive Vice President  
847.840.8743  
joe.stevens@transwestern.com

**Joe Karmin, SIOR**  
Executive Vice President  
847.588.5670  
joe.karmin@transwestern.com

The information provided herein was obtained from sources believed reliable; however, Transwestern makes no guarantees, warranties, or representations as to the completeness or accuracy thereof. The presentation of this information is submitted subject to errors, omissions, change of price or conditions, prior sale or lease, or withdrawal without notice. Copyright © 2024 Transwestern.



**INDUSTRIAL  
SPACE  
FOR LEASE**

**±4,962 SF**

Available  
Immediately

Dedicated  
Drive-in Door



**TRANSWESTERN**

REAL ESTATE  
SERVICES

# 1800 PICKWICK AVENUE

Glenview, IL 60026

[Property Website](#)

**AERIAL VIEW**



**Joe Stevens**

*Executive Vice President*

847.840.8743

[joe.stevens@transwestern.com](mailto:joe.stevens@transwestern.com)

**Joe Karmin, SIOR**

*Executive Vice President*

847.588.5670

[joe.karmin@transwestern.com](mailto:joe.karmin@transwestern.com)

The information provided herein was obtained from sources believed reliable; however, Transwestern makes no guarantees, warranties, or representations as to the completeness or accuracy thereof. The presentation of this information is submitted subject to errors, omissions, change of price or conditions, prior sale or lease, or withdrawal without notice. Copyright © 2024 Transwestern.