

**INDUSTRIAL  
SPACE  
FOR LEASE**

**±8,613 SF**

Well-maintained  
Building

Institutionally  
Owned and  
Managed by:



**TRANSWESTERN**  
REAL ESTATE  
SERVICES

# 1130 HOWARD STREET

Elk Grove Village, IL 60007

[Property Website](#)

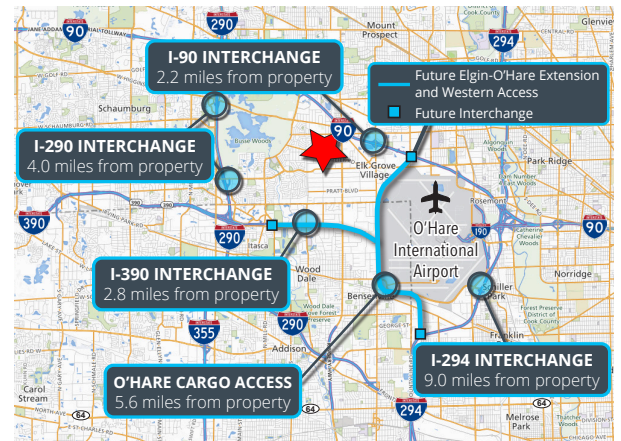


## Specifications

- Building Size: ±23,500 SF
- Land Area: ±1.31 AC
- Available Size: ±8,613 SF
- Office Size: ±1,735 SF
- Ceiling Height: 14'
- Loading: 1 Ext Dock / 1 DID
- Power: 200A
- Parking: ±10 Cars
- Zoning: I-1
- Year Built: 1978
- Construction: Masonry
- **Lease Rate: Subject to Offer**

## Highlights

- Well-maintained building
- Located in the epicenter of the prestigious Elk Grove Village submarket
- Direct access to I-90 and O'Hare
- Institutionally owned and managed



**Ross Lehrman**  
Vice President  
847.588.5671  
ross.lehrman@transwestern.com

**Joe Karmin, SIOR**  
Executive Vice President  
847.588.5670  
joe.karmin@transwestern.com

**Justin Lerner, SIOR**  
Executive Vice President  
847.588.5665  
justin.lerner@transwestern.com

**INDUSTRIAL  
SPACE  
FOR LEASE**

**±8,613 SF**

Well-maintained  
Building

Institutionally  
Owned and  
Managed by:



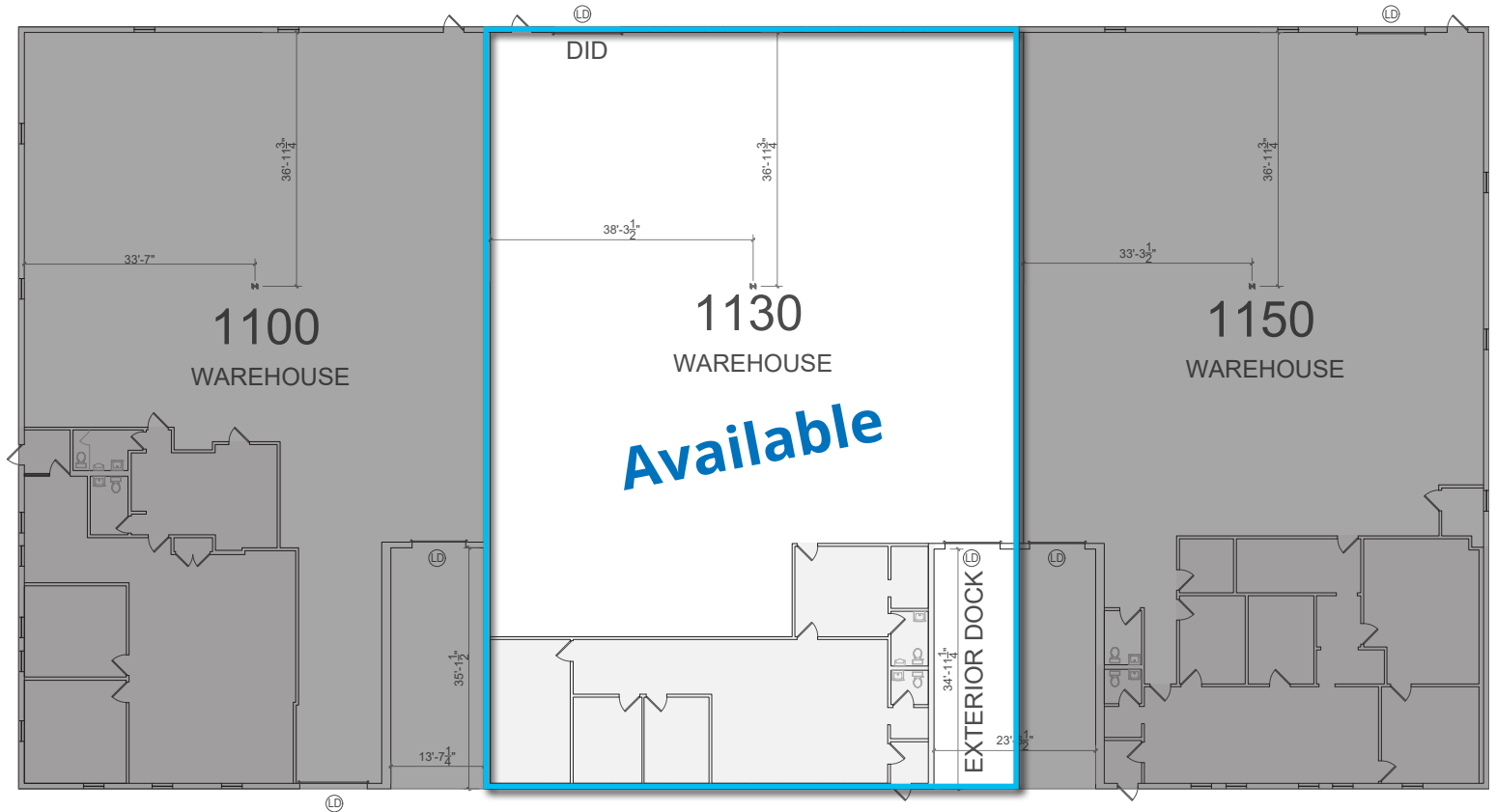
**TRANSWESTERN**  
REAL ESTATE  
SERVICES

# 1130 HOWARD STREET

Elk Grove Village, IL 60007

[Property Website](#)

## BUILDING PLAN



**Ross Lehrman**  
Vice President  
847.588.5671  
ross.lehrman@transwestern.com

**Joe Karmin, SIOR**  
Executive Vice President  
847.588.5670  
joe.karmin@transwestern.com

**Justin Lerner, SIOR**  
Executive Vice President  
847.588.5665  
justin.lerner@transwestern.com