

±20,000 SF
INDUSTRIAL
BUILDING
FOR SALE

Excellent
Loading
Access

Truck/Trailer
Parking
On-Site

Direct Access
to I-90
and I-390



TRANSWESTERN

REAL ESTATE
SERVICES

2100 ESTES AVENUE

Elk Grove Village, IL 60007

[Property Website](#)

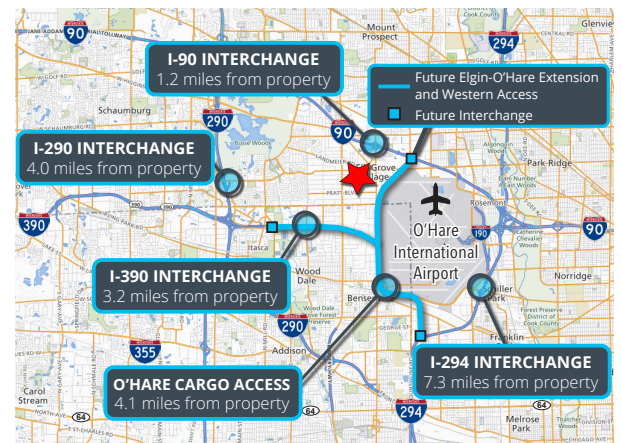


SPECIFICATIONS

- Building Size: ±20,000 SF
- Land Area: ±1.34 AC
- Office Size: ±6,000 SF
- Ceiling Height: 13'6"
- Loading: 2 Ext Docks / 1 DID
- Power: 800A 240V
- Car Parking: ±25 Striped Spaces
- Year Built: 1973
- Construction: Masonry
- Zoning: I-2 (General Industrial)
- **Sale Price: Subject to Offer**

HIGHLIGHTS

- Located in the epicenter of O'Hare Submarket
- Abundant parking available - expandable to ±60 spaces
- Truck / trailer parking available on-site
- Direct access to O'Hare Airport via I-90 and I-390
- Heavy power
- Excellent loading access
- Recently paved parking lot
- New LED lights in warehouse



Ross Lehrman
Senior Vice President
847.588.5671
ross.lehrman@transwestern.com

Joe Karmin, SIOR
Executive Vice President
847.588.5670
joe.karmin@transwestern.com

Justin Lerner, SIOR
Executive Vice President
847.588.5665
justin.lerner@transwestern.com

±20,000 SF
INDUSTRIAL
BUILDING
FOR SALE

Excellent
Loading
Access

Truck/Trailer
Parking
On-Site

Direct Access
to I-90
and I-390



TRANSWESTERN

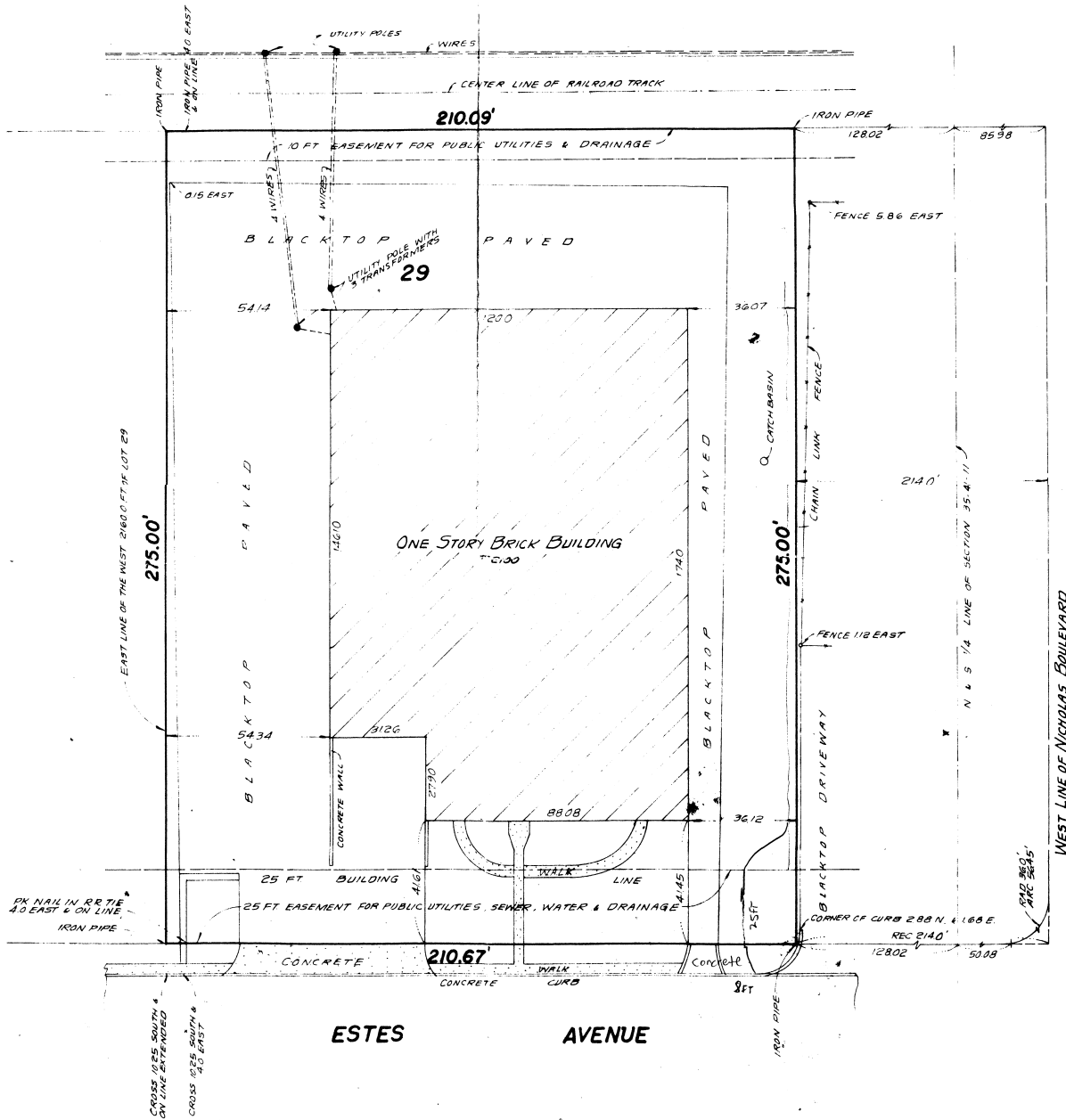
REAL ESTATE
SERVICES

2100 ESTES AVENUE

Elk Grove Village, IL 60007

[Property Website](#)

PLAT OF SURVEY



Ross Lehrman
Senior Vice President
847.588.5671
ross.lehrman@transwestern.com

Joe Karmin, SIOR
Executive Vice President
847.588.5670
joe.karmin@transwestern.com

Justin Lerner, SIOR
Executive Vice President
847.588.5665
justin.lerner@transwestern.com

±20,000 SF
INDUSTRIAL
BUILDING
FOR SALE

Excellent
Loading
Access

Truck/Trailer
Parking
On-Site

Direct Access
to I-90
and I-390



TRANSWESTERN

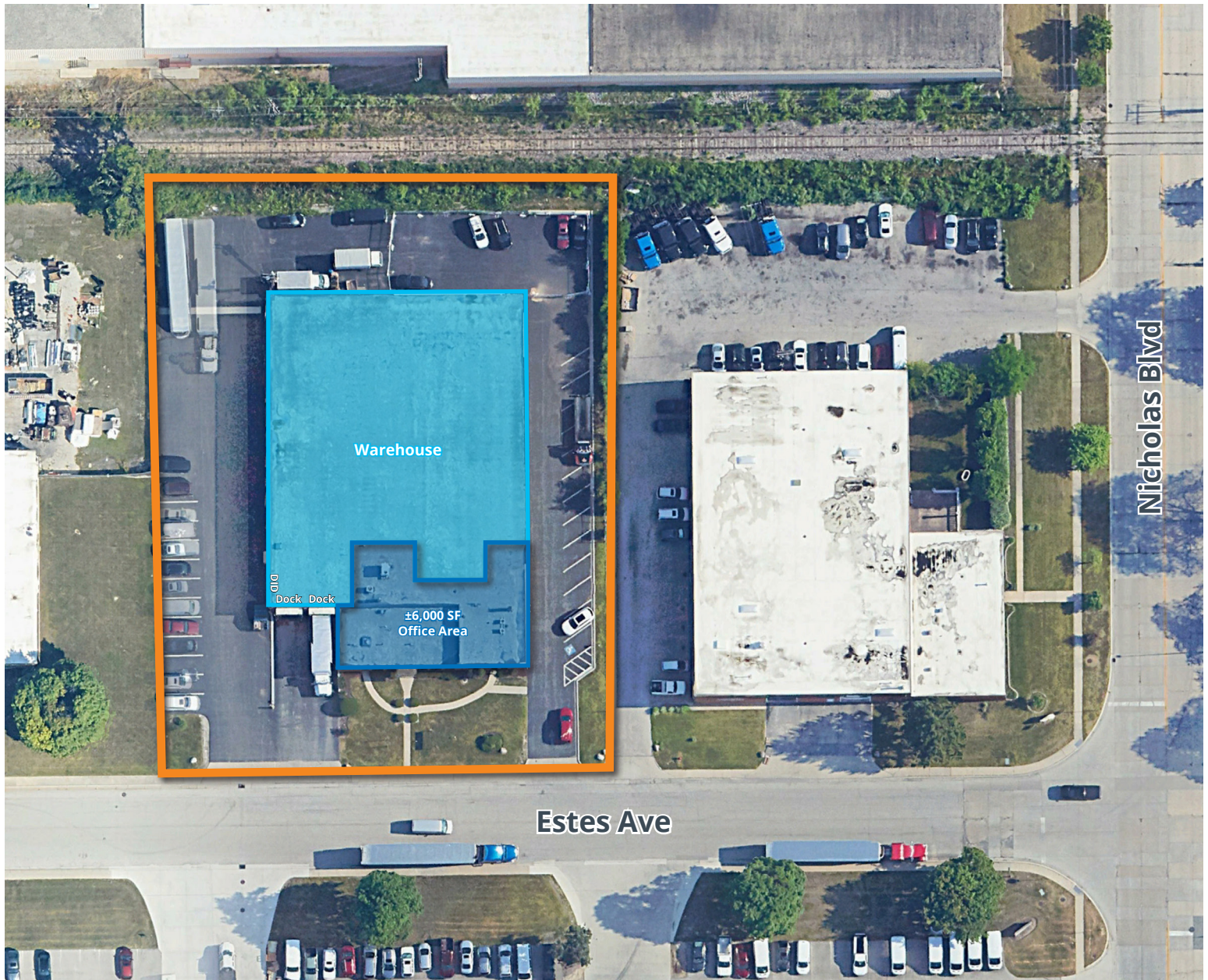
REAL ESTATE
SERVICES

2100 ESTES AVENUE

Elk Grove Village, IL 60007

[Property Website](#)

AERIAL VIEW



Ross Lehrman
Senior Vice President
847.588.5671
ross.lehrman@transwestern.com

Joe Karmin, SIOR
Executive Vice President
847.588.5670
joe.karmin@transwestern.com

Justin Lerner, SIOR
Executive Vice President
847.588.5665
justin.lerner@transwestern.com

The information provided herein was obtained from sources believed reliable; however, Transwestern makes no guarantees, warranties, or representations as to the completeness or accuracy thereof. The presentation of this information is submitted subject to errors, omissions, change of price or conditions, prior sale or lease, or withdrawal without notice. Copyright © 2025 Transwestern.