

±27,000 SF
INDUSTRIAL
SPACE FOR
SUBLEASE

Ideal for Freight
Forwarding and
Distribution

Great
Loading
Access

Sublease
Through
7/31/2027



TRANSWESTERN

REAL ESTATE
SERVICES

1100 CHASE AVENUE

Unit A, Elk Grove Village, IL 60007

[Property Website](#)

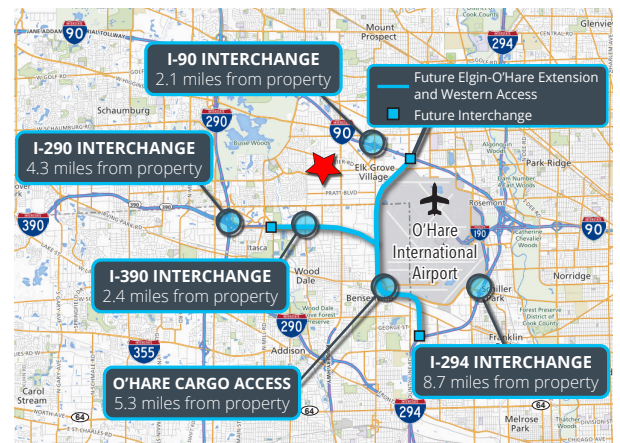


Specifications

- Building Size: ±45,100 SF
- Land Area: ±2.39 AC
- Available Size: ±27,000 SF
- Office Size: ±3,682 SF (2-Story)
- Ceiling Height: ±21'
- Loading: 3 Int Docks / 1 DID
- Power: 400A 277/480V 3PH 4W
- Year Built: 1980
- Construction: Masonry/Steel
- Zoning: I-2 (General Industrial)
- Sprinklers: Wet
- Heating: Gas
- **Lease Rate: Subject to Offer**

Highlights

- Sublease through 7/31/2027
- Ideal space for freight forwarding and distribution
- Great loading access
- High clear height
- Well-maintained corner property
- Ample car and trailer parking available on-site
- Direct access to O'Hare & I-90
- Located center of the prestigious Elk Grove Village Industrial Park



Ross Lehrman
Vice President
847.588.5671
ross.lehrman@transwestern.com

Joe Karmin, SIOR
Executive Vice President
847.588.5670
joe.karmin@transwestern.com

Justin Lerner, SIOR
Executive Vice President
847.588.5665
justin.lerner@transwestern.com

±27,000 SF
INDUSTRIAL
SPACE FOR
SUBLEASE

Ideal for Freight
Forwarding and
Distribution

Great
Loading
Access

Sublease
Through
7/31/2027



TRANSWESTERN

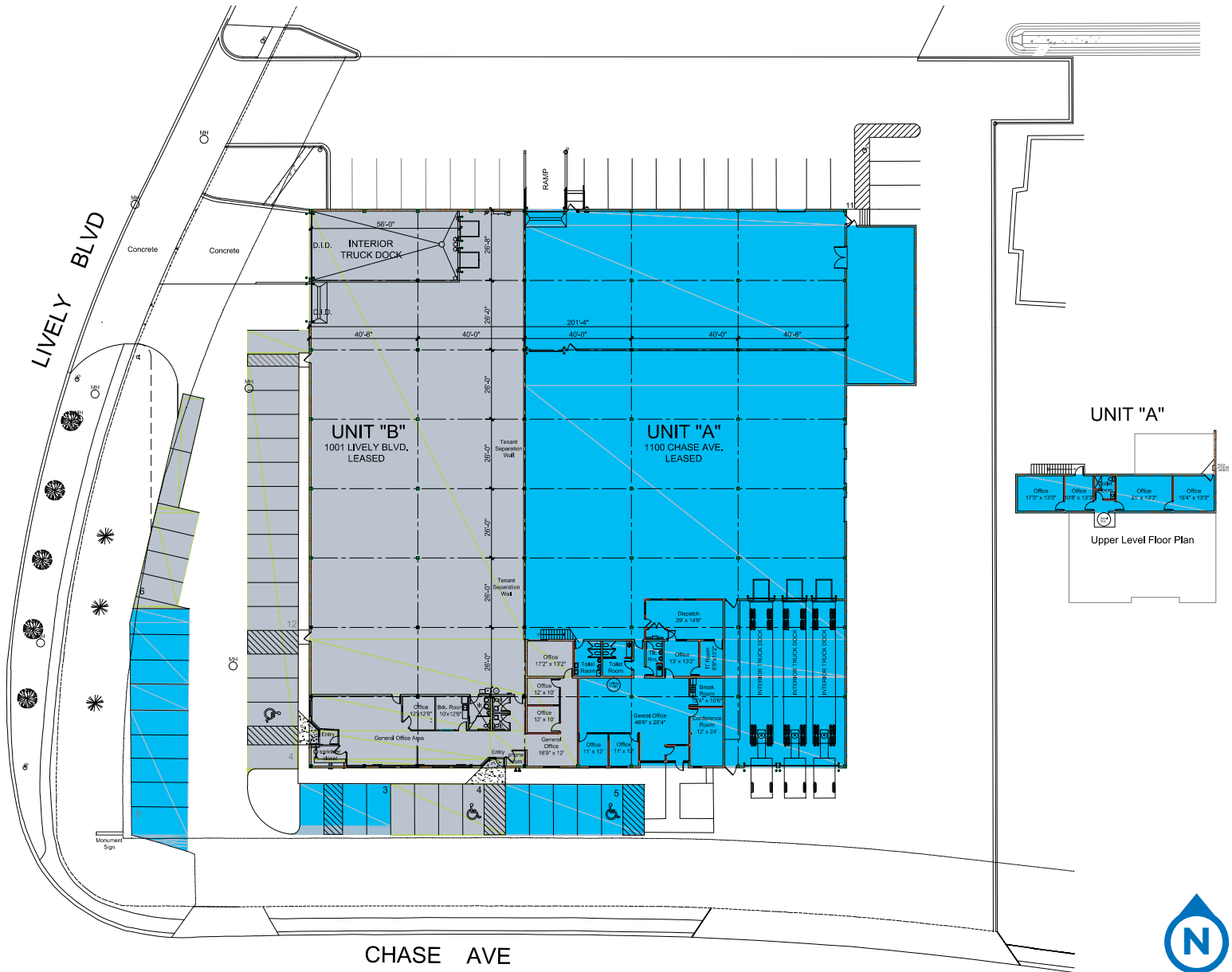
REAL ESTATE
SERVICES

1100 CHASE AVENUE

Unit A, Elk Grove Village, IL 60007

[Property Website](#)

BUILDING LAYOUT



Ross Lehrman
Vice President
847.588.5671
ross.lehrman@transwestern.com

Joe Karmin, SIOR
Executive Vice President
847.588.5670
joe.karmin@transwestern.com

Justin Lerner, SIOR
Executive Vice President
847.588.5665
justin.lerner@transwestern.com