

±11,043 SF
INDUSTRIAL
SPACE FOR
SUBLEASE

Sublease
Through
July 31, 2027

Direct Longer
Term Lease
Option Available

Located in
Sky Harbor
Business Park


TRANSWESTERN
REAL ESTATE
SERVICES

650 ANTHONY TRAIL

Unit F, Northbrook, IL 60062

[Property Website](#)

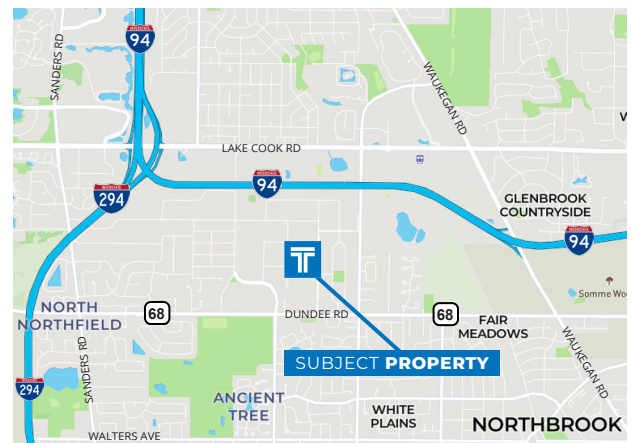


SPECIFICATIONS

- Building Size: ±97,871 SF
- Land Area: ±4.9 AC
- Available Size: ±11,043 SF
- Office Size: ±2,248 SF
- Ceiling Height: 18'
- Loading Docks: 4 Shared
- Drive-in Doors: 1 Private
- Parking Ratio: 1.77/1,000 SF
- Heating: Gas
- Sprinklers: Wet
- Year Built: 1978
- **Sublease Rate: Subject to Offer**

HIGHLIGHTS

- Sublease through 7/31/2027
- Direct longer term lease option available
- Available for immediate occupancy
- Very well-maintained space
- Located in the prestigious Sky Harbor Business Park
- Zoned I1 (Restricted Industrial)
- Professionally owned and managed industrial facility
- ~2 miles from the 4-way interchange at I-94/I-294



Ross Lehrman
Senior Vice President
847.588.5671
ross.lehrman@transwestern.com

Joe Karmin, SIOR
Executive Vice President
847.588.5670
joe.karmin@transwestern.com

Justin Lerner, SIOR
Executive Vice President
847.588.5665
justin.lerner@transwestern.com

The information provided herein was obtained from sources believed reliable; however, Transwestern makes no guarantees, warranties, or representations as to the completeness or accuracy thereof. The presentation of this information is submitted subject to errors, omissions, change of price or conditions, prior sale or lease, or withdrawal without notice. Copyright © 2025 Transwestern.

±11,043 SF
INDUSTRIAL
SPACE FOR
SUBLEASE

Sublease
Through
July 31, 2027

Direct Longer
Term Lease
Option Available

Located in
Sky Harbor
Business Park



TRANSWESTERN

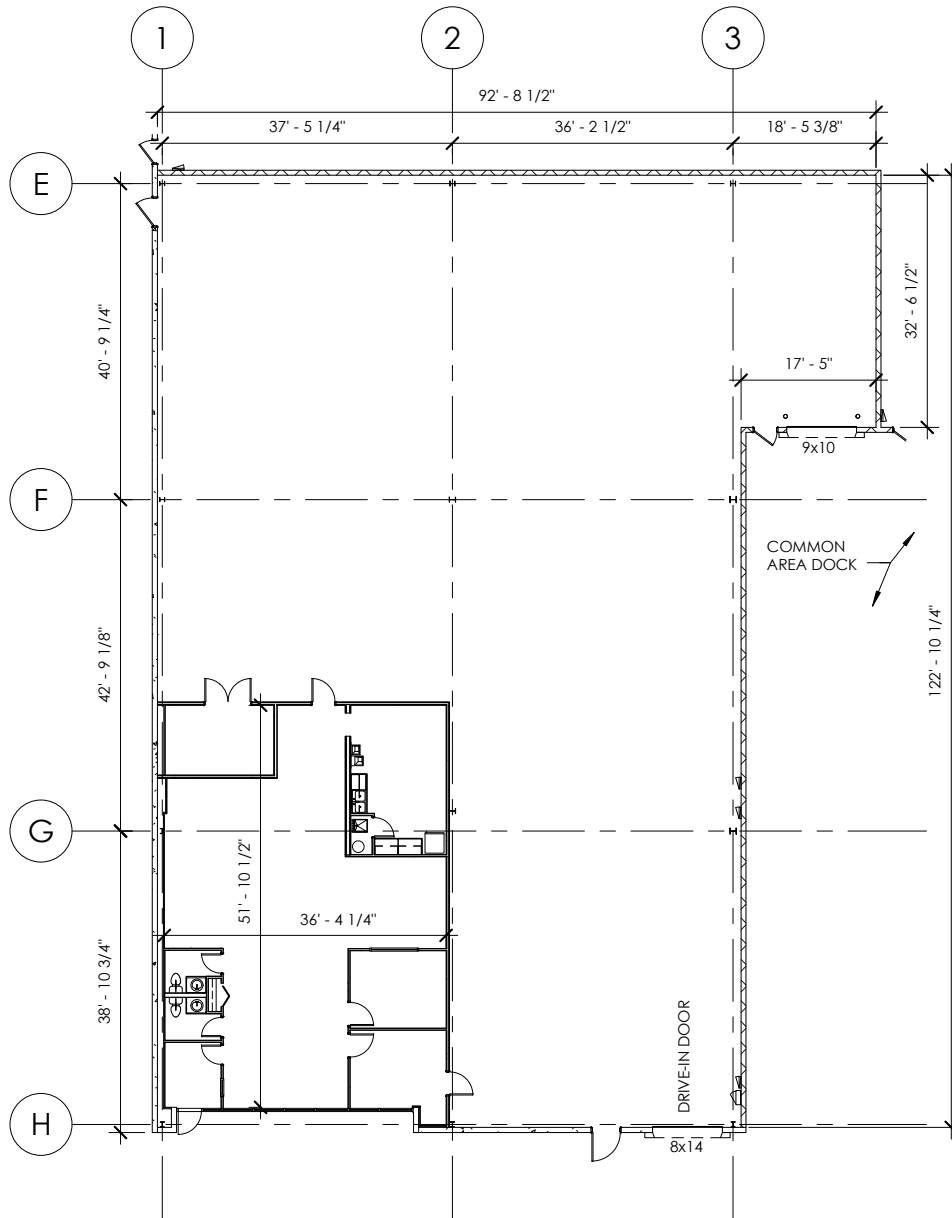
REAL ESTATE
SERVICES

650 ANTHONY TRAIL

Unit F, Northbrook, IL 60062

[Property Website](#)

UNIT LAYOUT



Ross Lehrman
Senior Vice President
847.588.5671
ross.lehrman@transwestern.com

Joe Karmin, SIOR
Executive Vice President
847.588.5670
joe.karmin@transwestern.com

Justin Lerner, SIOR
Executive Vice President
847.588.5665
justin.lerner@transwestern.com

The information provided herein was obtained from sources believed reliable; however, Transwestern makes no guarantees, warranties, or representations as to the completeness or accuracy thereof. The presentation of this information is submitted subject to errors, omissions, change of price or conditions, prior sale or lease, or withdrawal without notice. Copyright © 2025 Transwestern.

±11,043 SF
INDUSTRIAL
SPACE FOR
SUBLEASE

Sublease
Through
July 31, 2027

Direct Longer
Term Lease
Option Available

Located in
Sky Harbor
Business Park



TRANSWESTERN

REAL ESTATE
SERVICES

650 ANTHONY TRAIL

Unit F, Northbrook, IL 60062

[Property Website](#)

PROPERTY AERIAL



Ross Lehrman
Senior Vice President
847.588.5671
ross.lehrman@transwestern.com

Joe Karmin, SIOR
Executive Vice President
847.588.5670
joe.karmin@transwestern.com

Justin Lerner, SIOR
Executive Vice President
847.588.5665
justin.lerner@transwestern.com

The information provided herein was obtained from sources believed reliable; however, Transwestern makes no guarantees, warranties, or representations as to the completeness or accuracy thereof. The presentation of this information is submitted subject to errors, omissions, change of price or conditions, prior sale or lease, or withdrawal without notice. Copyright © 2025 Transwestern.