

**INDUSTRIAL
SPACE
FOR LEASE**

±2,556 SF

High-Image
Business
Park

Immediate
Access to
I-355 and
North Ave.

Professionally Owned
and Managed by:



TRANSWESTERN
REAL ESTATE
SERVICES

950 N. DUPAGE AVENUE

Lombard, IL 60148
[Property Website](#)

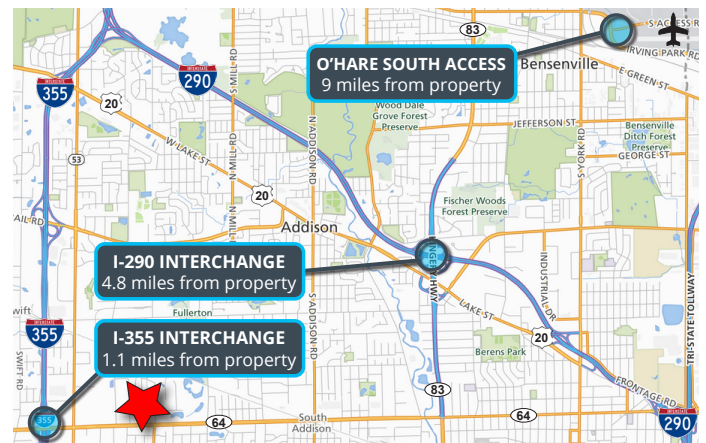


Specifications

- Building Size: ±17,871 SF
- Available Size: ±2,556 SF
- Office Size: ±1,256 SF
- Ceiling Height: ±14' Clear
- Loading: 1 Drive-in Door
- Power: 400A 3PH
- Year Built: 1988
- Construction: Masonry
- RE Taxes: \$1.81 PSF (2022)
- **Lease Rate: Subject to Offer**

Highlights

- High-image business park
- Hard-to-find smaller unit with abundant parking
- Well-maintained
- Preferred corner unit
- Immediate access to I-355 and North Avenue
- Low DuPage County taxes
- Professionally owned and managed



Ross Lehrman
Vice President
847.588.5671
ross.lehrman@transwestern.com

Joe Karmin, SIOR
Executive Vice President
847.588.5670
joe.karmin@transwestern.com

Justin Lerner, SIOR
Executive Vice President
847.588.5665
justin.lerner@transwestern.com

The information provided herein was obtained from sources believed reliable; however, Transwestern makes no guarantees, warranties, or representations as to the completeness or accuracy thereof. The presentation of this information is submitted subject to errors, omissions, change of price or conditions, prior sale or lease, or withdrawal without notice. Copyright © 2024 Transwestern.

**INDUSTRIAL
SPACE
FOR LEASE**

±2,556 SF

High-Image
Business
Park

Immediate
Access to
I-355 and
North Ave.

Professionally Owned
and Managed by:

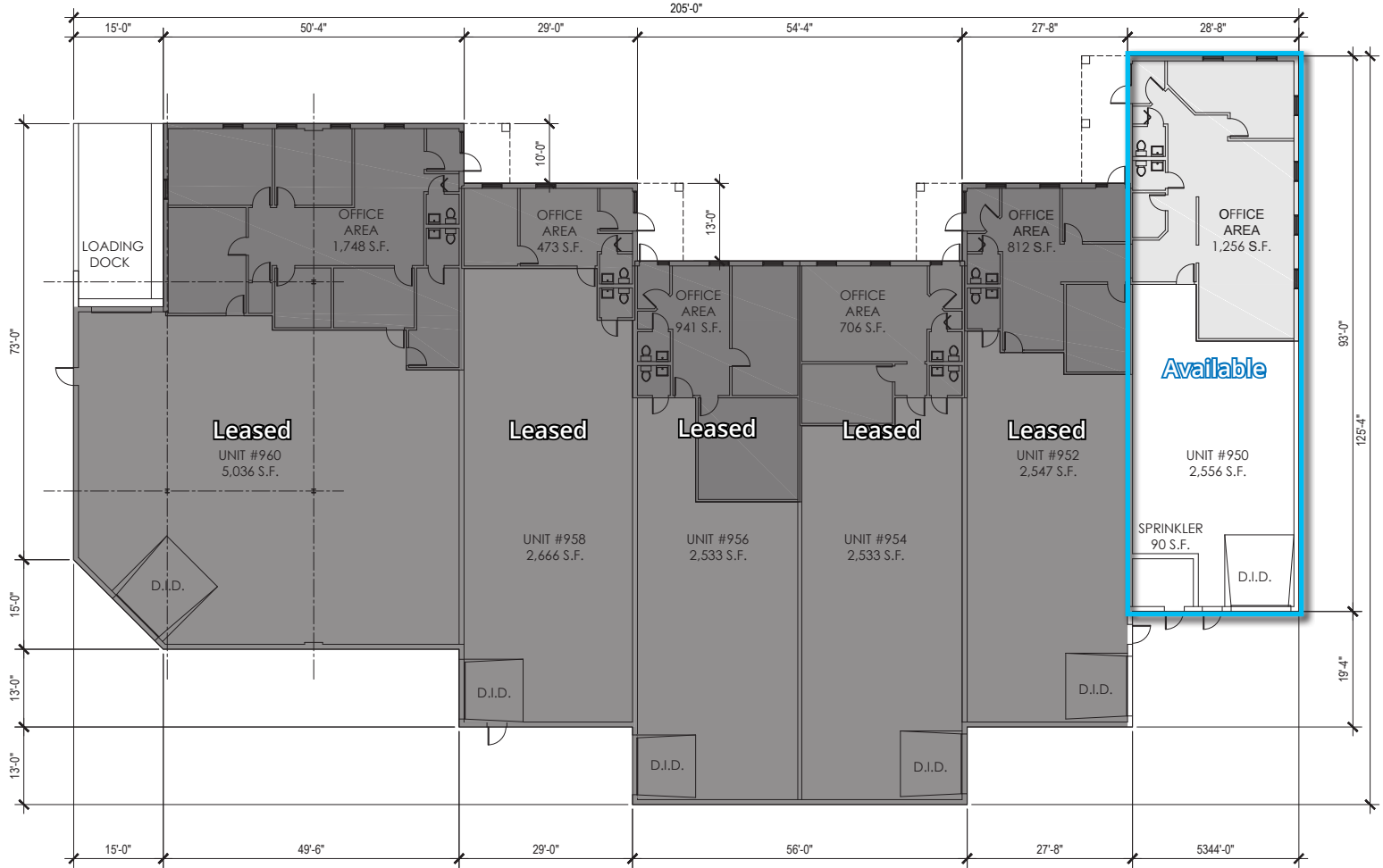


TRANSWESTERN
REAL ESTATE
SERVICES

950 N. DUPAGE AVENUE

Lombard, IL 60148
[Property Website](#)

BUILDING PLAN



Ross Lehrman
Vice President
847.588.5671
ross.lehrman@transwestern.com

Joe Karmin, SIOR
Executive Vice President
847.588.5670
joe.karmin@transwestern.com

Justin Lerner, SIOR
Executive Vice President
847.588.5665
justin.lerner@transwestern.com