

**TWO
INDUSTRIAL
BUILDINGS
FOR LEASE**

**TOTAL OF
±35,482 SF
(DIVISIBLE)
ON ±2.81 AC**

Large
Land Site

Tons of
Outdoor Storage
or Fleet Parking

**COMPLETE
PROPERTY
RENOVATIONS
UNDERWAY!**

TRANSWESTERN
REAL ESTATE
SERVICES

28041 N. BRADLEY ROAD

Lake Forest, IL 60045
[Property Website](#)

- Improvements underway
- Located in unincorporated Lake Forest
- Large land site
- Tons of outdoor storage or fleet parking
- Ideal for contractor yard, service-related use, or manufacturing
- Abundant parking
- Close proximity to I-94 and IL-176

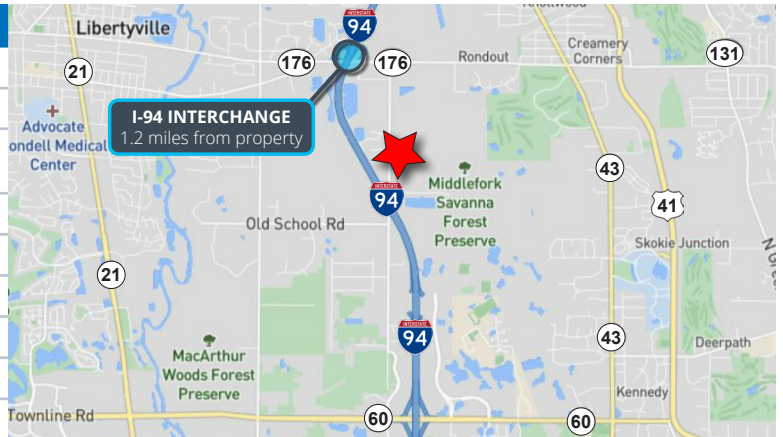
Building A



Building B



SPECIFICATIONS	BUILDING A	BUILDING B
Building Size	±23,482 SF	±12,000 SF
Land Area	±2.81 AC	
Office Size	±3,640 SF 1st Floor ±1,768 SF 2nd Floor	±784 SF
Ceiling Height	18' (To be confirmed)	To be confirmed
Loading	2 Int Docks / 1 DID	3 DID
Power	1200A 220V 3P	800A 220V 3P
Year Built	1968	1985
Construction	Masonry	Steel
Lease Rate	Subject to Offer	



Joe Karmin, SIOR
Executive Vice President
847.588.5670
joe.karmin@transwestern.com

Ross Lehrman
Vice President
847.588.5671
ross.lehrman@transwestern.com

Justin Lerner, SIOR
Executive Vice President
847.588.5665
justin.lerner@transwestern.com

The information provided herein was obtained from sources believed reliable; however, Transwestern makes no guarantees, warranties, or representations as to the completeness or accuracy thereof. The presentation of this information is submitted subject to errors, omissions, change of price or conditions, prior sale or lease, or withdrawal without notice. Copyright © 2024 Transwestern.

TWO
INDUSTRIAL
BUILDINGS
FOR LEASE

TOTAL OF
±35,482 SF
(DIVISIBLE)
ON ±2.81 AC

Large
Land Site

Tons of
Outdoor Storage
or Fleet Parking

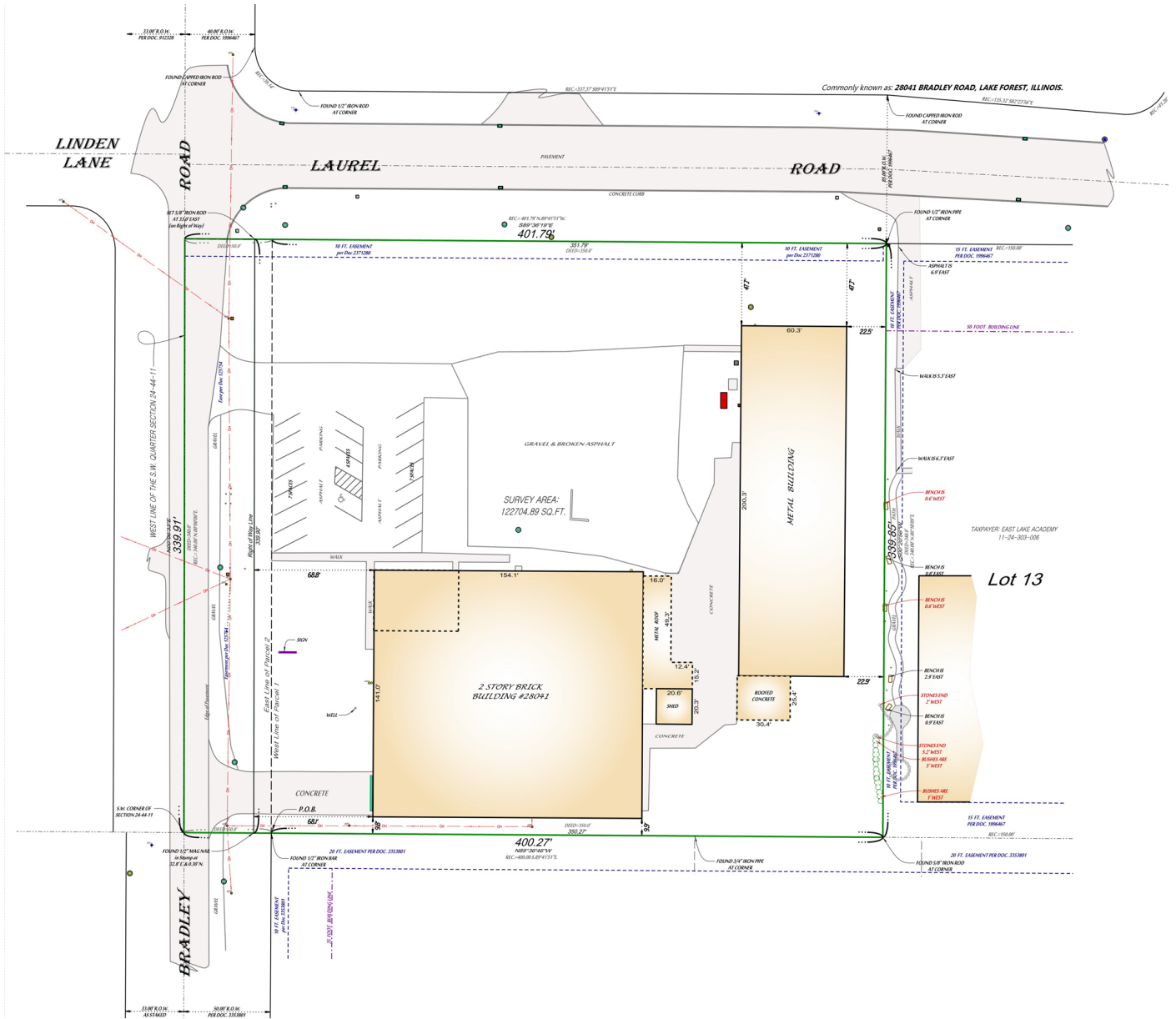
**COMPLETE
PROPERTY
RENOVATIONS
UNDERWAY!**

TRANSWESTERN
REAL ESTATE
SERVICES

28041 N. BRADLEY ROAD

Lake Forest, IL 60045
[Property Website](#)

PLAT OF SURVEY



Joe Karmin, SIOR
Executive Vice President
847.588.5670
joe.karmin@transwestern.com

Ross Lehrman
Vice President
847.588.5671
ross.lehrman@transwestern.com

Justin Lerner, SIOR
Executive Vice President
847.588.5665
justin.lerner@transwestern.com

The information provided herein was obtained from sources believed reliable; however, Transwestern makes no guarantees, warranties, or representations as to the completeness or accuracy thereof. The presentation of this information is submitted subject to errors, omissions, change of price or conditions, prior sale or lease, or withdrawal without notice. Copyright © 2024 Transwestern.

**TWO
INDUSTRIAL
BUILDINGS
FOR LEASE**

**TOTAL OF
±35,482 SF
(DIVISIBLE)
ON ±2.81 AC**

Large
Land Site

Tons of
Outdoor Storage
or Fleet Parking

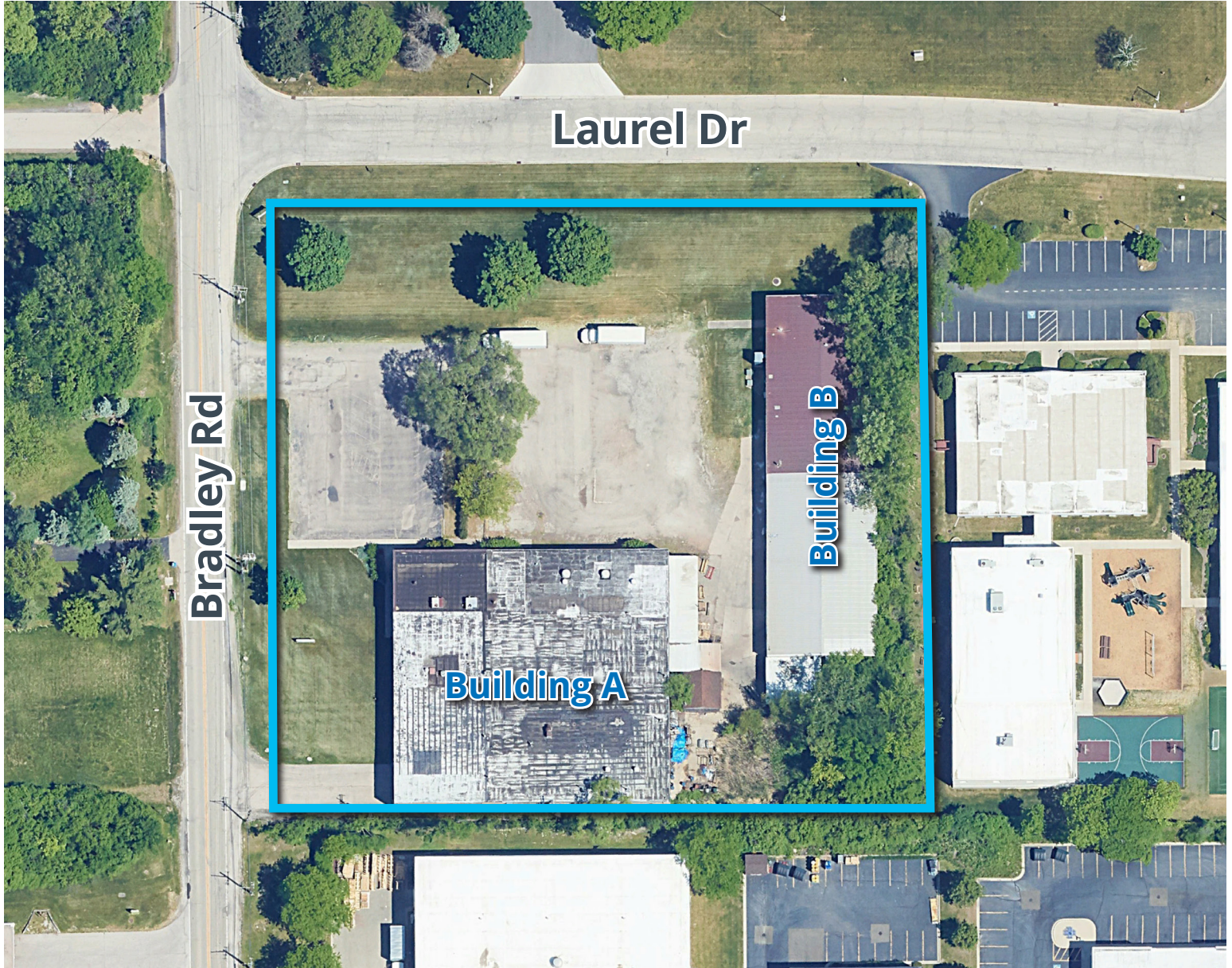
**COMPLETE
PROPERTY
RENOVATIONS
UNDERWAY!**

TRANSWESTERN
REAL ESTATE
SERVICES

28041 N. BRADLEY ROAD

Lake Forest, IL 60045
[Property Website](#)

AERIAL VIEW



Joe Karmin, SIOR
Executive Vice President
847.588.5670
joe.karmin@transwestern.com

Ross Lehrman
Vice President
847.588.5671
ross.lehrman@transwestern.com

Justin Lerner, SIOR
Executive Vice President
847.588.5665
justin.lerner@transwestern.com

The information provided herein was obtained from sources believed reliable; however, Transwestern makes no guarantees, warranties, or representations as to the completeness or accuracy thereof. The presentation of this information is submitted subject to errors, omissions, change of price or conditions, prior sale or lease, or withdrawal without notice. Copyright © 2024 Transwestern.