

±9,920 SF  
INDUSTRIAL  
BUILDING  
FOR SALE

Divisible Down  
to Two (2)  
±5,000 SF Units

Great  
User/Investor  
Opportunity

Direct  
Access  
to I-390



TRANSWESTERN

REAL ESTATE  
SERVICES

# 540 LUNT AVENUE

Schaumburg, IL 60193

[Property Website](#)

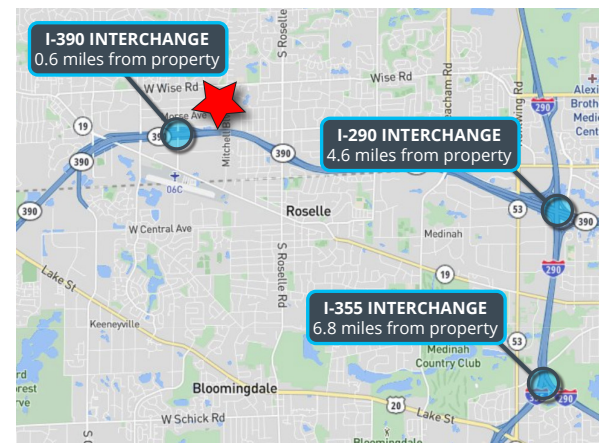


## SPECIFICATIONS

- Building Size: ±9,920 SF
- Land Area: ±0.49 AC
- Divisible To: ±5,000 SF
- Office Size: ±1,500 SF
- Ceiling Height: 13'8"
- Loading: 1 Dock / 3 DID
- Power: 400 Amps
- Parking: ±10 Cars
- Zoning: M-1
- Year Built: 1974
- Construction: Masonry
- Heating: Gas
- **Sale Price: Subject to Offer**

## HIGHLIGHTS

- Great user/investor opportunity
- Very well-maintained building
- Potential two-tenant facility
- Floor drains in warehouse
- Direct access to I-390 via Wright Blvd.



**Ross Lehrman**  
Senior Vice President  
847.588.5671  
ross.lehrman@transwestern.com

**Joe Karmin, SIOR**  
Executive Vice President  
847.588.5670  
joe.karmin@transwestern.com

**Justin Lerner, SIOR**  
Executive Vice President  
847.588.5665  
justin.lerner@transwestern.com

The information provided herein was obtained from sources believed reliable; however, Transwestern makes no guarantees, warranties, or representations as to the completeness or accuracy thereof. The presentation of this information is submitted subject to errors, omissions, change of price or conditions, prior sale or lease, or withdrawal without notice. Copyright © 2024 Transwestern.

±9,920 SF  
**INDUSTRIAL  
BUILDING  
FOR SALE**

Divisible Down  
to Two (2)  
±5,000 SF Units

Great  
User/Investor  
Opportunity

Direct  
Access  
to I-390



**TRANSWESTERN**

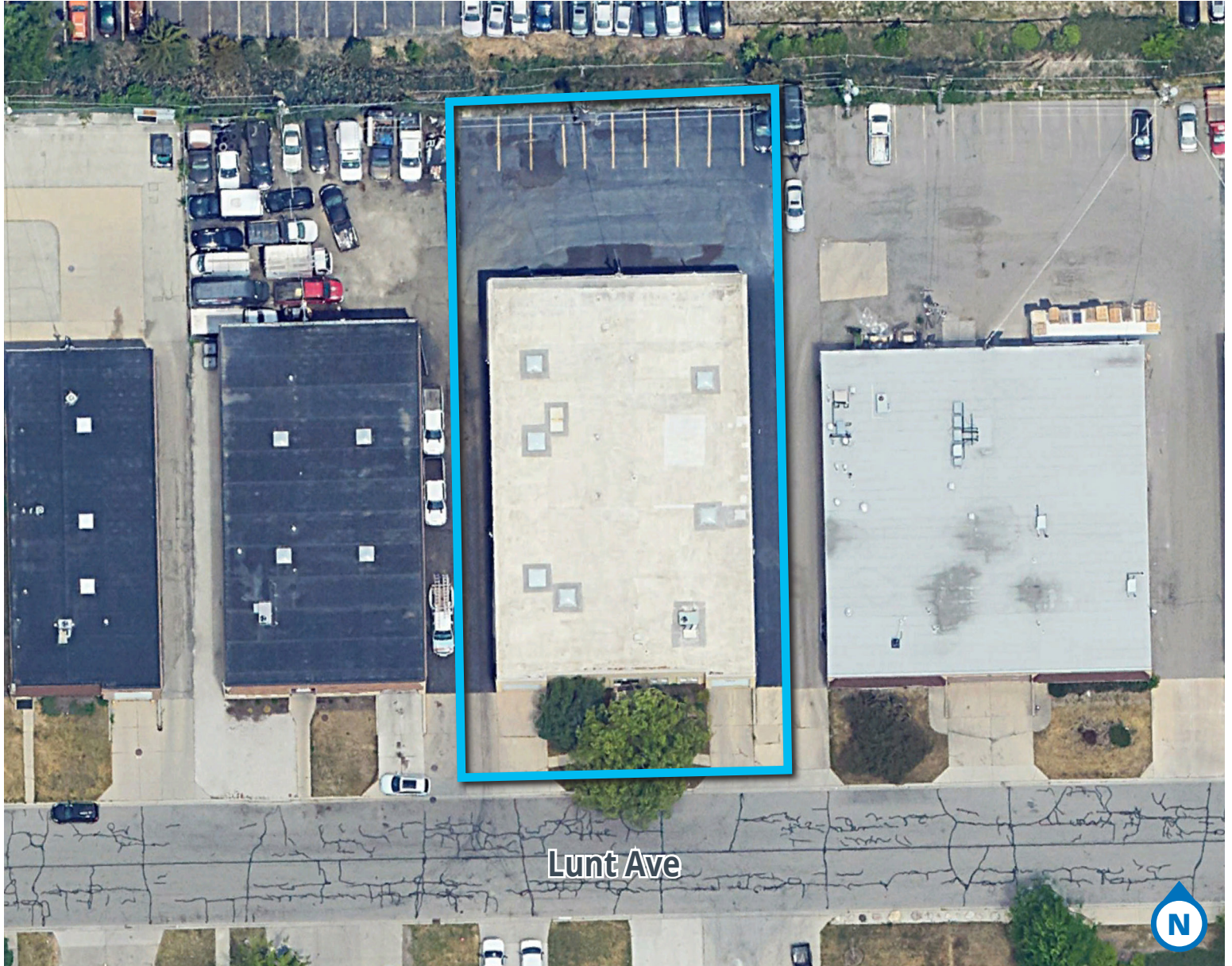
REAL ESTATE  
SERVICES

# 540 LUNT AVENUE

Schaumburg, IL 60193

[Property Website](#)

## AERIAL VIEW



**Ross Lehrman**  
*Senior Vice President*  
847.588.5671  
ross.lehrman@transwestern.com

**Joe Karmin, SIOR**  
*Executive Vice President*  
847.588.5670  
joe.karmin@transwestern.com

**Justin Lerner, SIOR**  
*Executive Vice President*  
847.588.5665  
justin.lerner@transwestern.com

The information provided herein was obtained from sources believed reliable; however, Transwestern makes no guarantees, warranties, or representations as to the completeness or accuracy thereof. The presentation of this information is submitted subject to errors, omissions, change of price or conditions, prior sale or lease, or withdrawal without notice. Copyright © 2024 Transwestern.