

# 3550 145th St W | Burnsville, MN

INDUSTRIAL BUILDING FOR SALE



## Property Details

**LOCATION** 3550 145th St | Burnsville, MN 55306

**LOT SIZE** 1.25 acres

**BUILDING SIZE** 14,717 SF

**CLEAR HEIGHT** 20'

**LOADING** 3 - Overhead doors  
2 - docks

**ZONING** I-3: Office & Industrial park

**YEAR BUILT** 2001

**PARKING** 38 spaces

**HIGHLIGHTS** Hard to find industrial building  
Flexible I-3 zoning  
Previously multi-tenant  
Close to retail and services

## Financial

**ASKING PRICE** \$2,300,000

**2026 RE TAXES** \$53,828

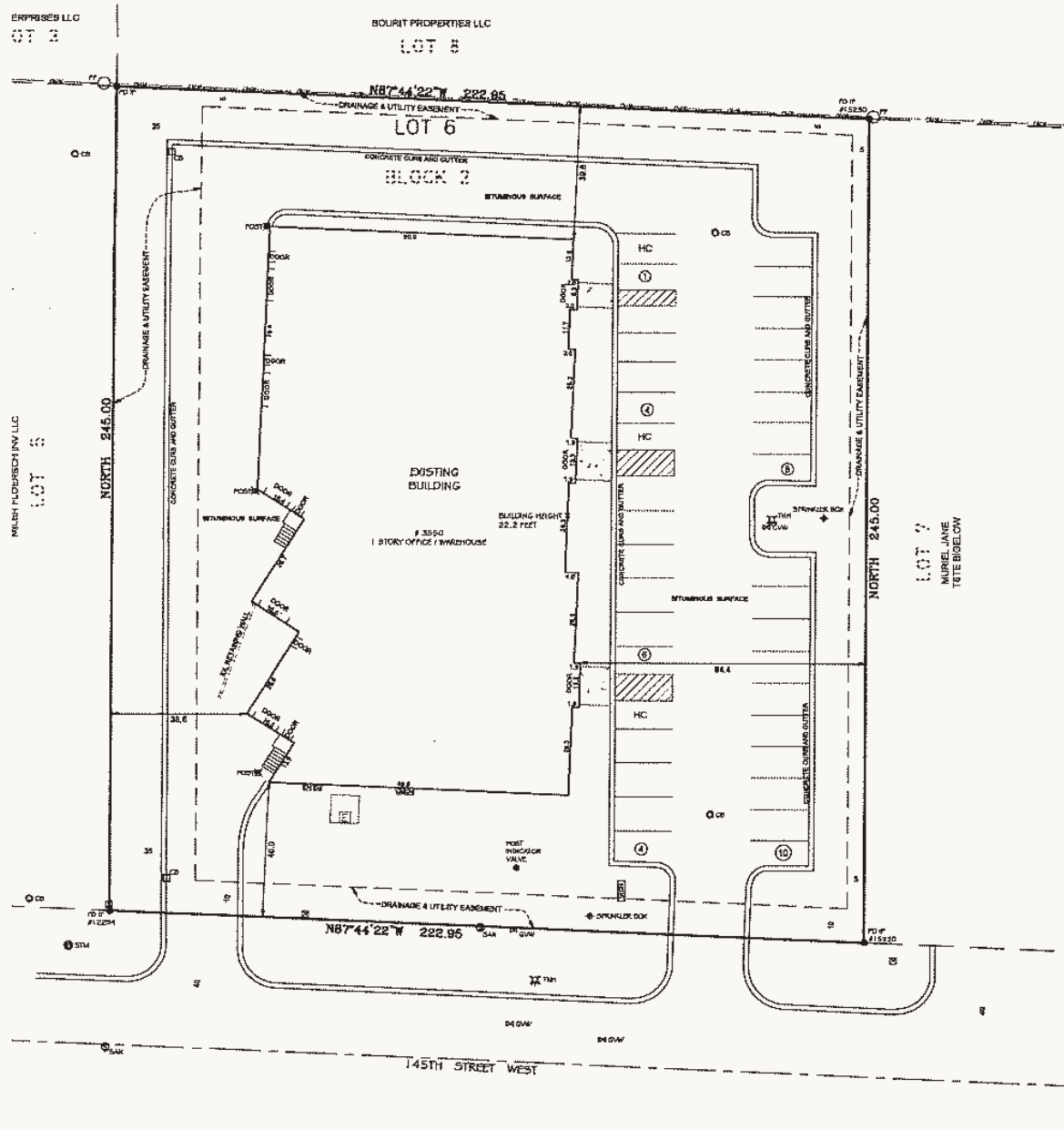


**T** Transwestern

Bryan Beltrand

(612) 845-1040 | bryan.beltrand@transwestern.com

# SITE PLAN

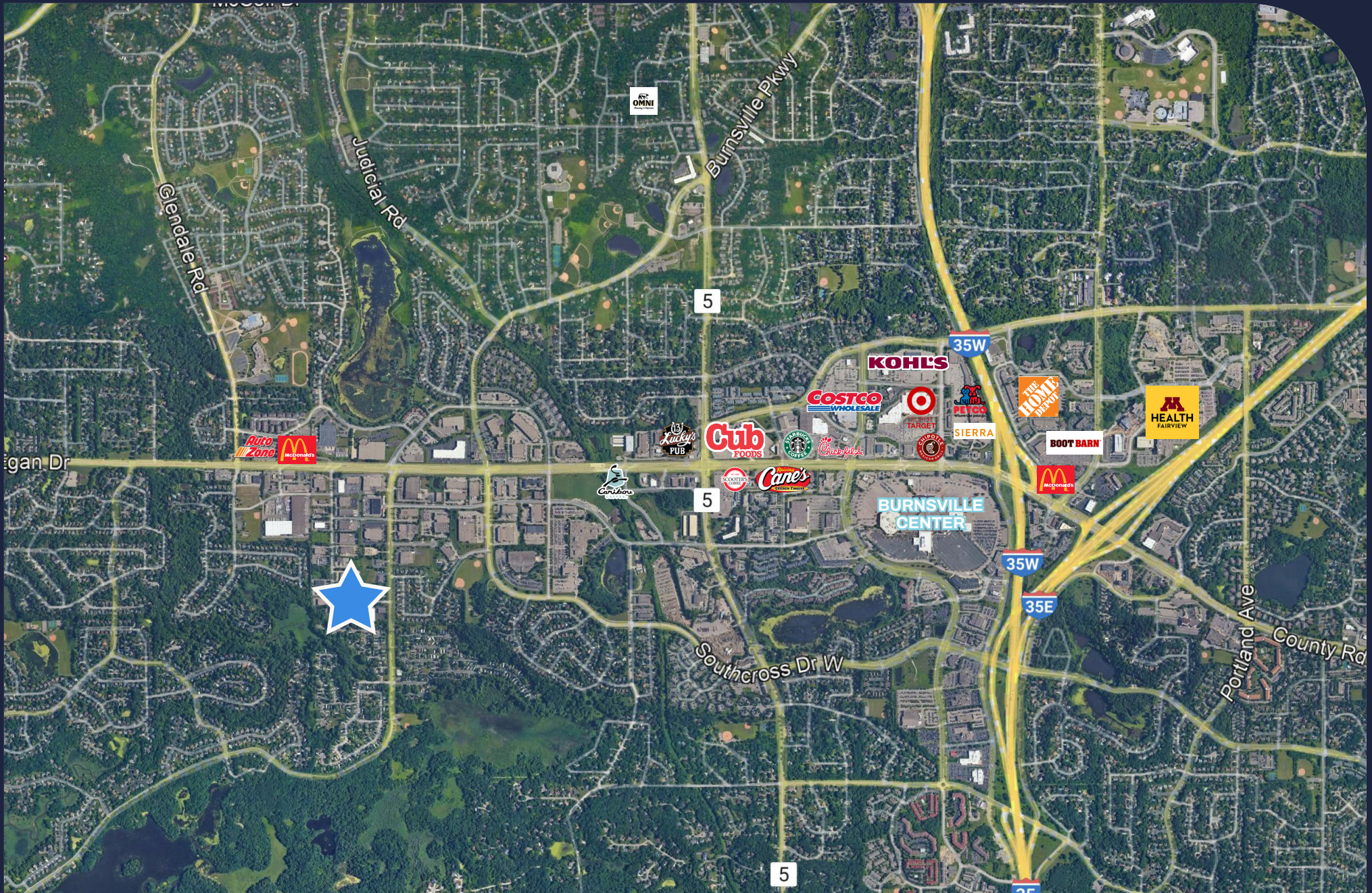


**T** Transwestern

Bryan Beltrand

(612) 845-1040 | bryan.beltrand@transwestern.com





 Transwestern

Bryan Beltrand

(612) 845-1040 | [bryan.beltrand@transwestern.com](mailto:bryan.beltrand@transwestern.com)