



NORTH PARK CORPORATE CENTER

17319 SAN PEDRO AVE, SAN ANTONIO TX 78232



LEASING CONTACTS:

CHARLIE WEIL, SIOR
(210) 253 - 2934
charlie.weil@transwestern.com

MASON POLLARD
(210) 253 - 2935
mason.pollard@transwestern.com



BUILDING FEATURES



A MODERN OFFICE FOR A MODERN WORKER

+/- 7,742 SF -
+/- 18,148 SF

BUILDING 4: ±7,742 SF
BUILDING 5: ±18,148 SF



WRAP AROUND PARKING WITH DRIVE-UP
ACCESSIBILITY
(4.65/1,000)



TOUR NEWLY CONSTRUCTED
ONSITE GREENSPACE



EXTERIOR MEETING
AREAS WITH FULL WIFI INTEGRATION



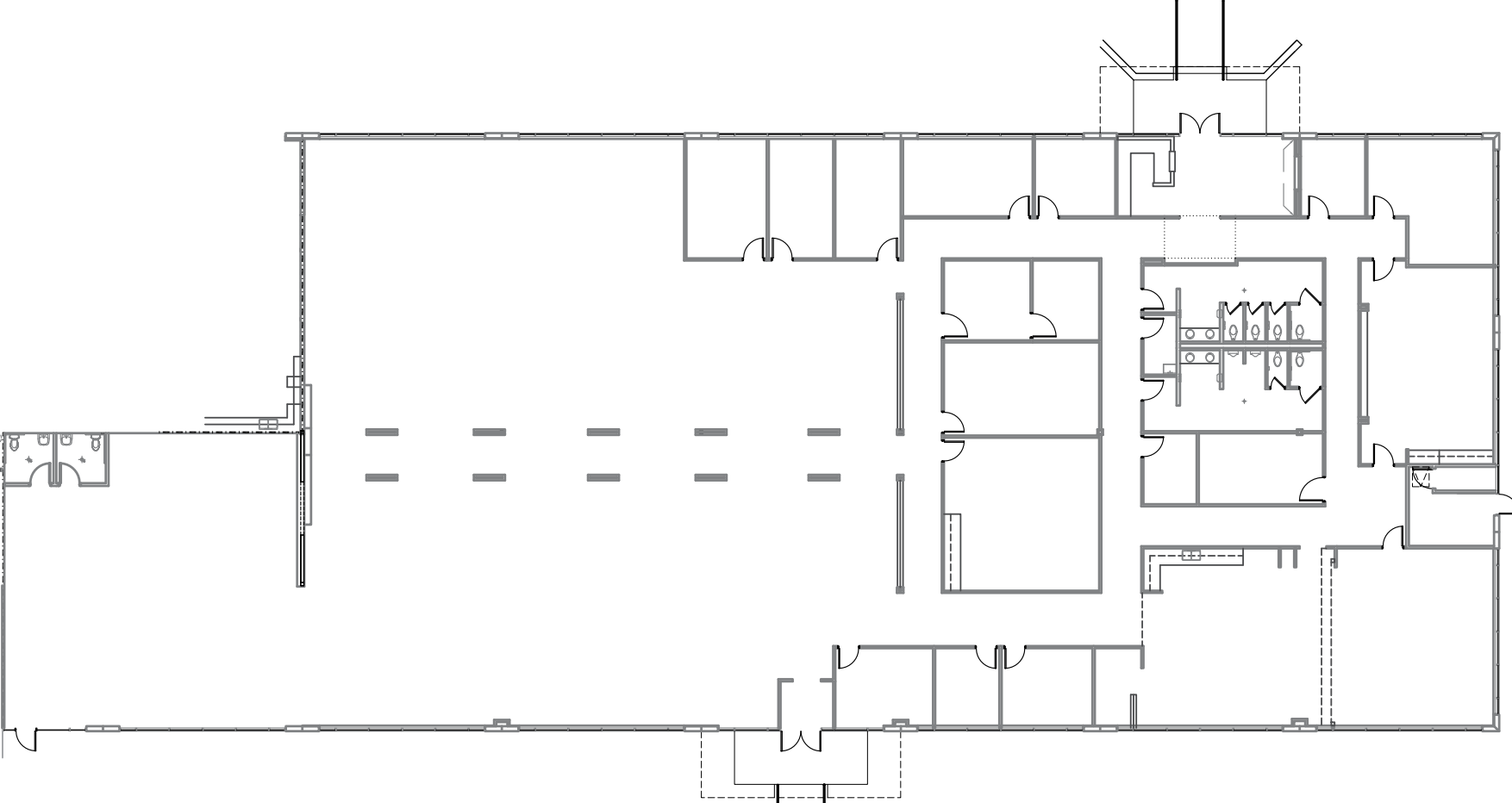
BEST-IN-CLASS AMENITIES WITHIN
1 MILE OF PROPERTY

INTERIOR SPACES



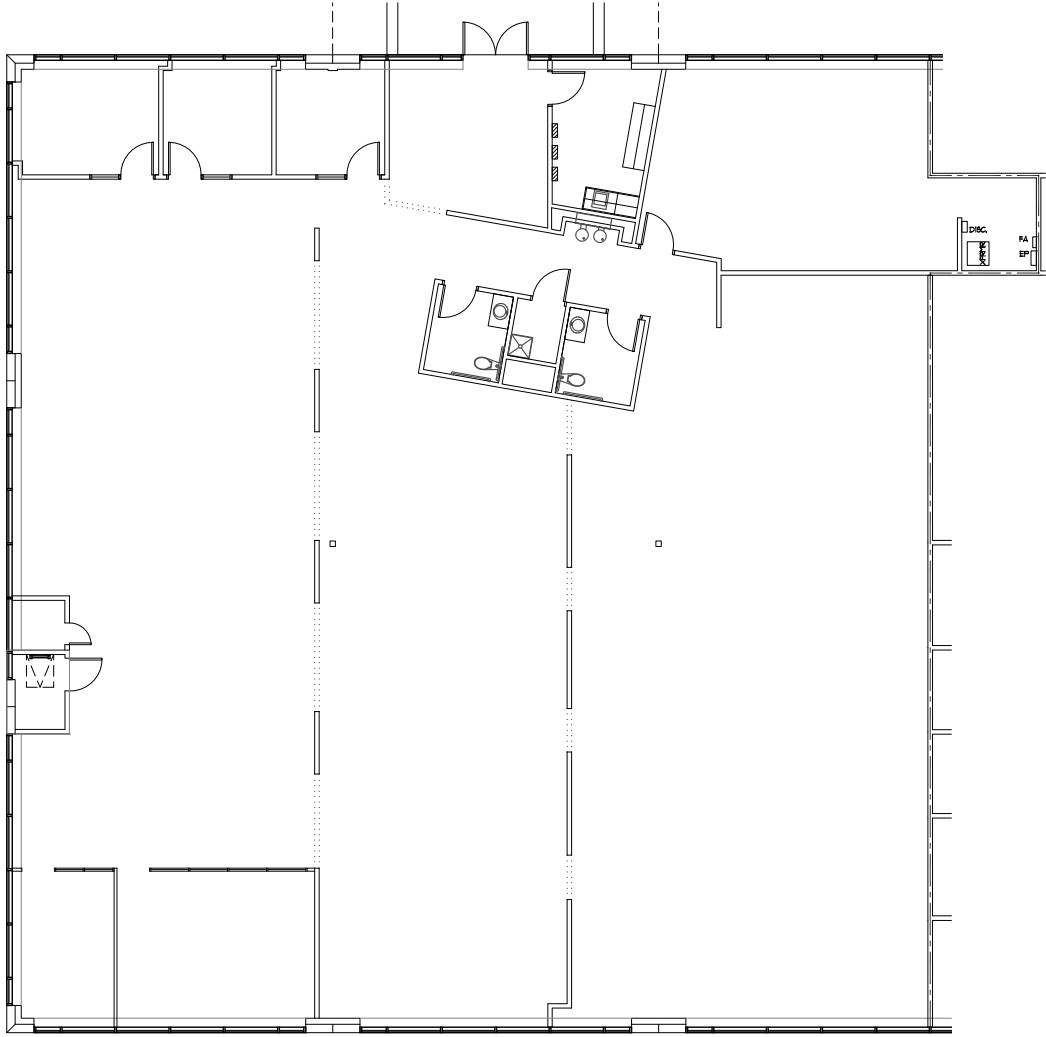
BUILDING 5 | AS-BUILT FLOOR PLAN | SUITE 500 | 18,148 RSF

Efficient floorplate provides maximum flexibility for a range of buildout options from fully open plan to perimeter office.



BUILDING 4 | AS-BUILT FLOOR PLAN | SUITE 425 | 7,742 RSF

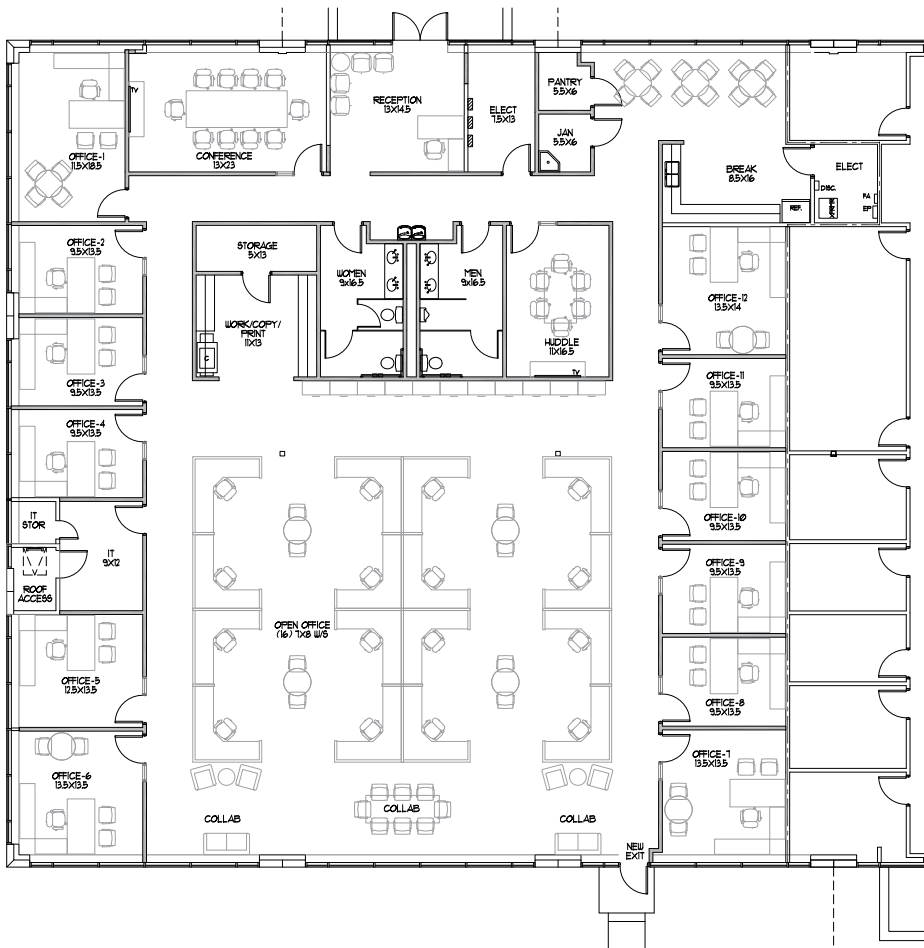
Efficient floorplate provides maximum flexibility for a range of buildout options from fully open plan to perimeter office.



VIRTUAL TOUR

BUILDING 4 | CONCEPTUAL PLANS | SUITE 425 | 7,742 RSF

OPTION 1



- 16 OPEN OFFICE WORKSTATIONS
- 12 PRIVATE OFFICES
- 2 HUDDLE/CONFERENCE ROOMS
- 1 BREAK/LOUNGE AREAS

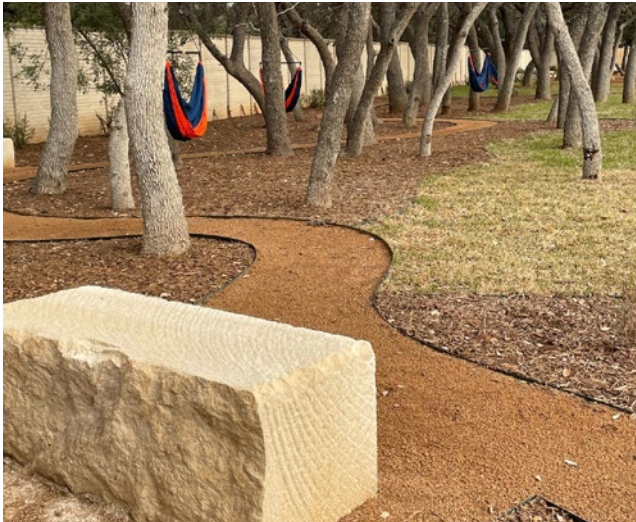
OPTION 2



- 44 OPEN OFFICE WORKSTATIONS
- 7 PRIVATE OFFICES
- 2 HUDDLE/CONFERENCE ROOMS
- 1 BREAK/LOUNGE AREAS

OUTDOOR AMENITY | GREENSPACE

Enjoy a breath of fresh air at North Park Corporate Center's new landscaping project that benefits employees and the environment.





281

1604

1604

281

NORTH PARK
CORPORATE CENTER



PHASE I

PHASE II

Ingress

Egress

Local Amenities
1-Mile Radius

| | Area Count |
|---|------------|
| Groceries ● | 3 |
| Shopping ● | 42 |
| Restaurants ● | 32 |

Large Retailers

SUITE 425
7,742 SF

SUITE 500
18,148 SF

CHARLIE WEIL, SIOR
Transwestern
(210) 253 - 2934
charlie.weil@transwestern.com

MASON POLLARD
Transwestern
(210) 253 - 2935
mason.pollard@transwestern.com

