

FOR LEASE

# Brookhollow Shopping Center

San Antonio, TX 78232





## OPPORTUNITY

# Property highlights

- Second generation and move-in ready options ranging from 900 - 8,400 SF
- End-cap available: 2,400 SF
- Located just north of the San Antonio Airport at the bustling intersection of Highway 281 and Brookhollow Blvd
- Excellent visibility and access from all directions
- Surrounded by numerous national and local retailers including HEB, Pet Supplies Plus, Great Clips, Whataburger, Pacific Moon and The UPS Store
- Pylon signage available





**THE NEIGHBORHOOD**

# Strong demographics

**POPULATION**

7,334	82,152	235,310
1 mile	3 mile	5 mile

**EMPLOYEE POPULATION**

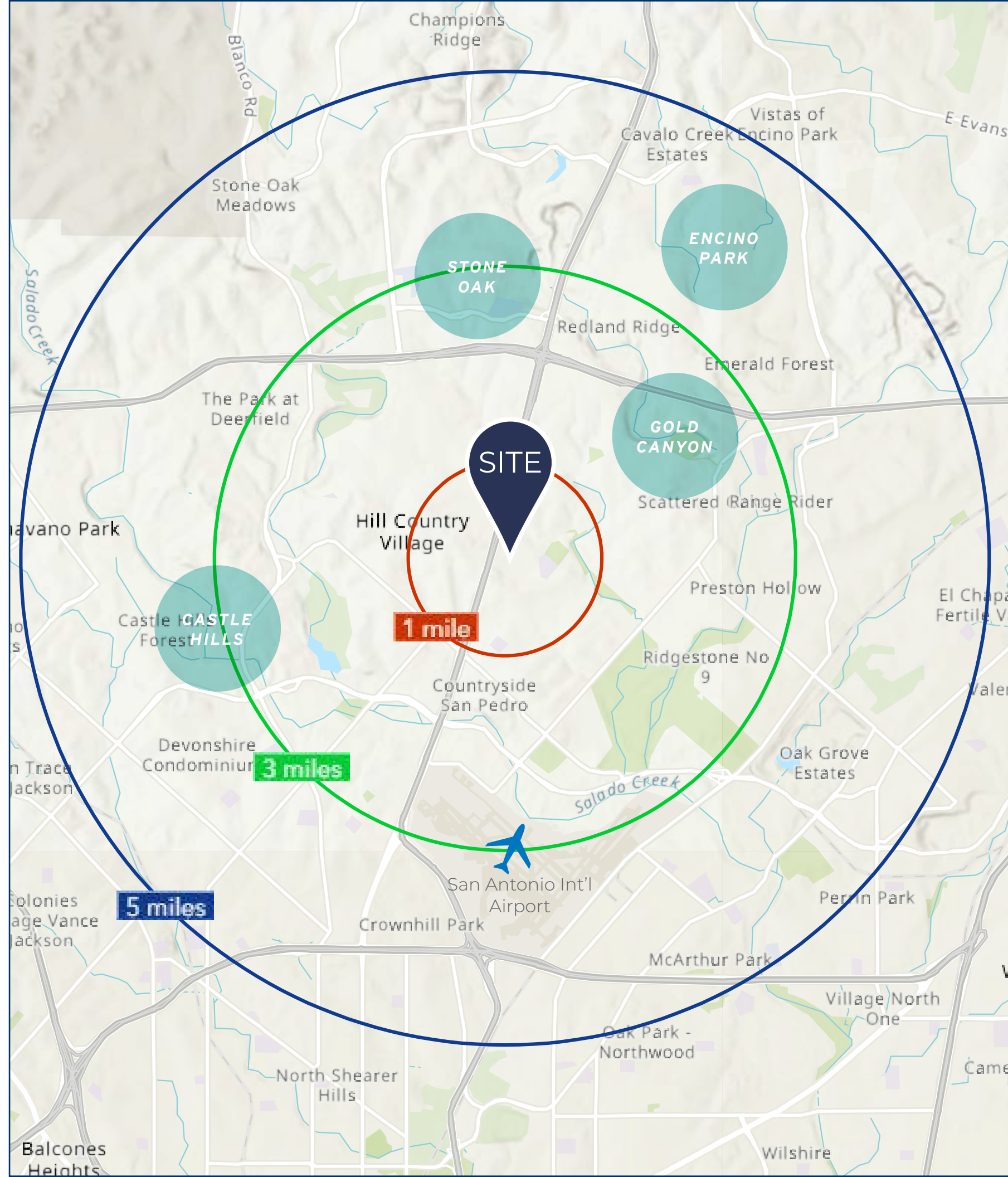
11,860	66,354	162,421
1 mile	3 mile	5 mile

**AVERAGE HOUSEHOLD INCOME**

\$120,764	\$108,806	\$111,826
1 mile	3 mile	5 mile

**BACHELORS DEGREE OR HIGHER**

51.8%	50.5%	49.2%
1 mile	3 mile	5 mile





## THE NEIGHBORHOOD

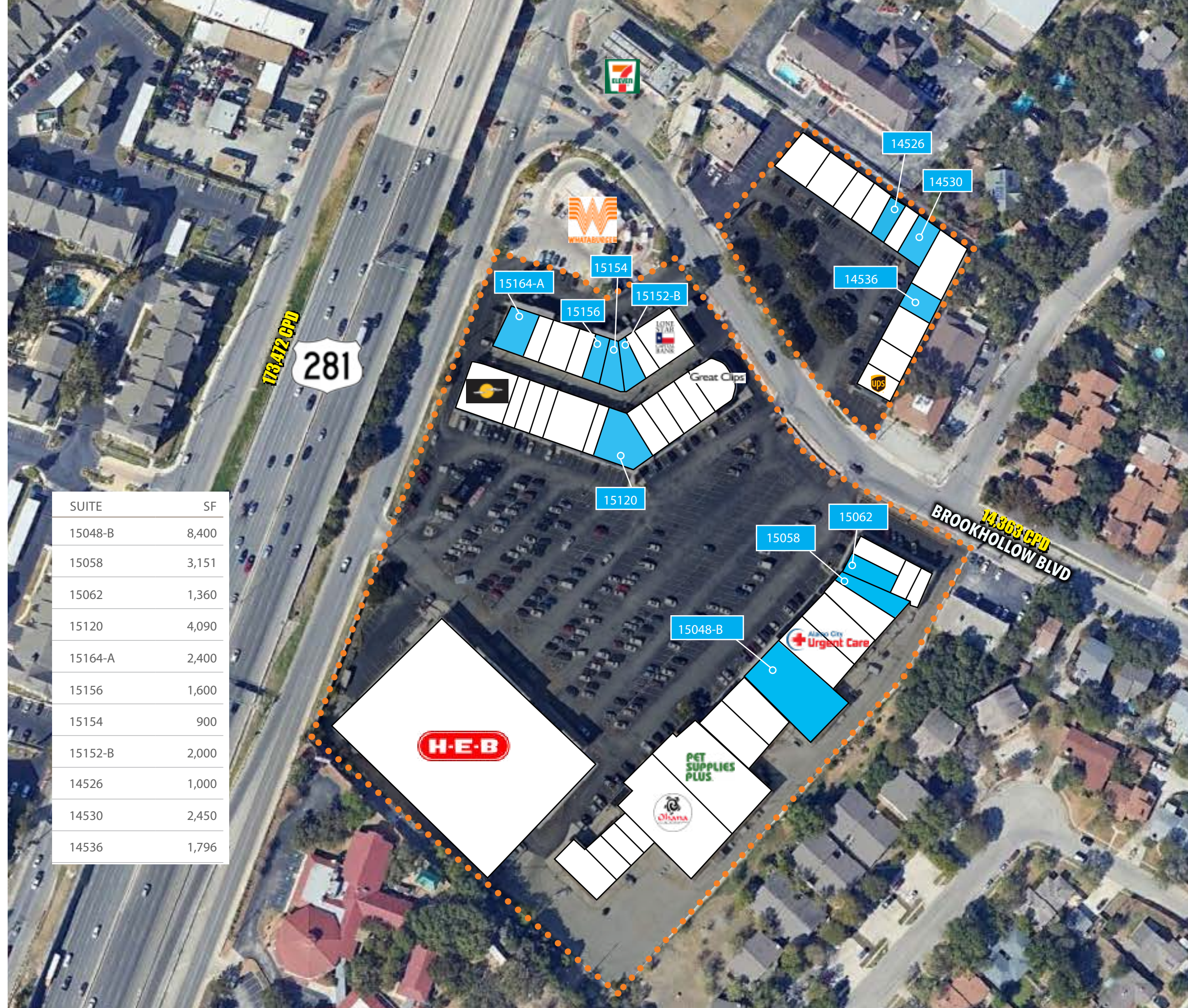
# Site plan

The corner of Hwy 281 and Brookhollow is one of the most highly trafficked corridors of North Central San Antonio. Nestled amongst several high-profile neighborhoods, Brookhollow Shopping Center is ideally located for various types of retail users.

### Targeted uses:

- Hardware store
- Salon
- Insurance
- Cell phone store
- Sporting goods
- Apparel
- Jewlery store
- Restaurant

SUITE	SF
15048-B	8,400
15058	3,151
15062	1,360
15120	4,090
15164-A	2,400
15156	1,600
15154	900
15152-B	2,000
14526	1,000
14530	2,450
14536	1,796







# BROOKHOLLOW SHOPPING CENTER

Luis Garza, CCIM  
Vice President  
210.253.2947  
[Luis.Garza@transwestern.com](mailto:Luis.Garza@transwestern.com)

Chris Thompson  
Associate  
210.200.8644  
[Chris.Thompson@transwestern.com](mailto:Chris.Thompson@transwestern.com)