

An aerial photograph of a suburban neighborhood. A large, irregularly shaped area in the center is highlighted with a semi-transparent blue overlay and a white border, indicating a vacant industrial lot for sale. The lot is situated between a residential street (Mcknight Rd N) and a railroad track. The surrounding area includes houses, trees, and a small pond.

INDUSTRIAL FOR SALE

1300 MCKNIGHT RD N | MAPLEWOOD, MN

MCKNIGHT RD N



TRANSWESTERN

REAL ESTATE
SERVICES

SITE OVERVIEW

SPECIFICATIONS

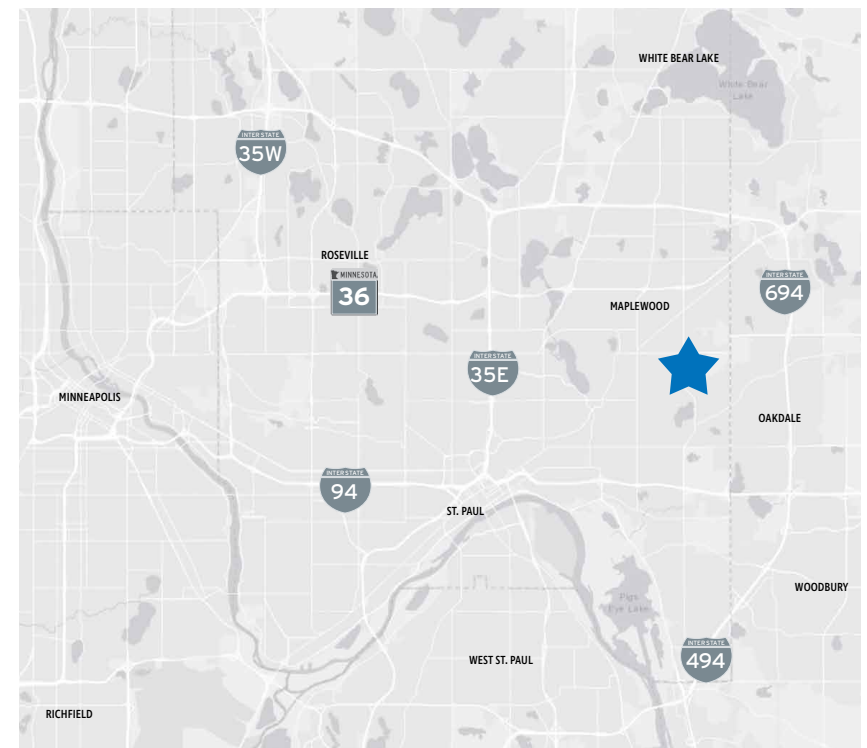
- LOCATION:** 1300 McKnight Rd N | Maplewood, MN 55119
- SITE SIZE:** 30.40 Acres
- PARCEL ID:** 24.29.22.31.0012
- ZONING:** Light Manufacturing (M-1)
(City on board with industrial/data center uses)
- LOADING:** Four (4) dock doors + Two (2) drive-in doors
- RAIL ACCESS:** 7,400 linear feet of dedicated track w/
off-loading positions

AVAILABILITY

- TOTAL SPACE:** 80,000 SF A-Frame Building
12,500 SF Metal Bldg attached to A-Frame
4,000 +/- SF Office Building
- SALE PRICE:** Negotiable
- 2025 TAXES:** \$121,358

PROPERTY FEATURES

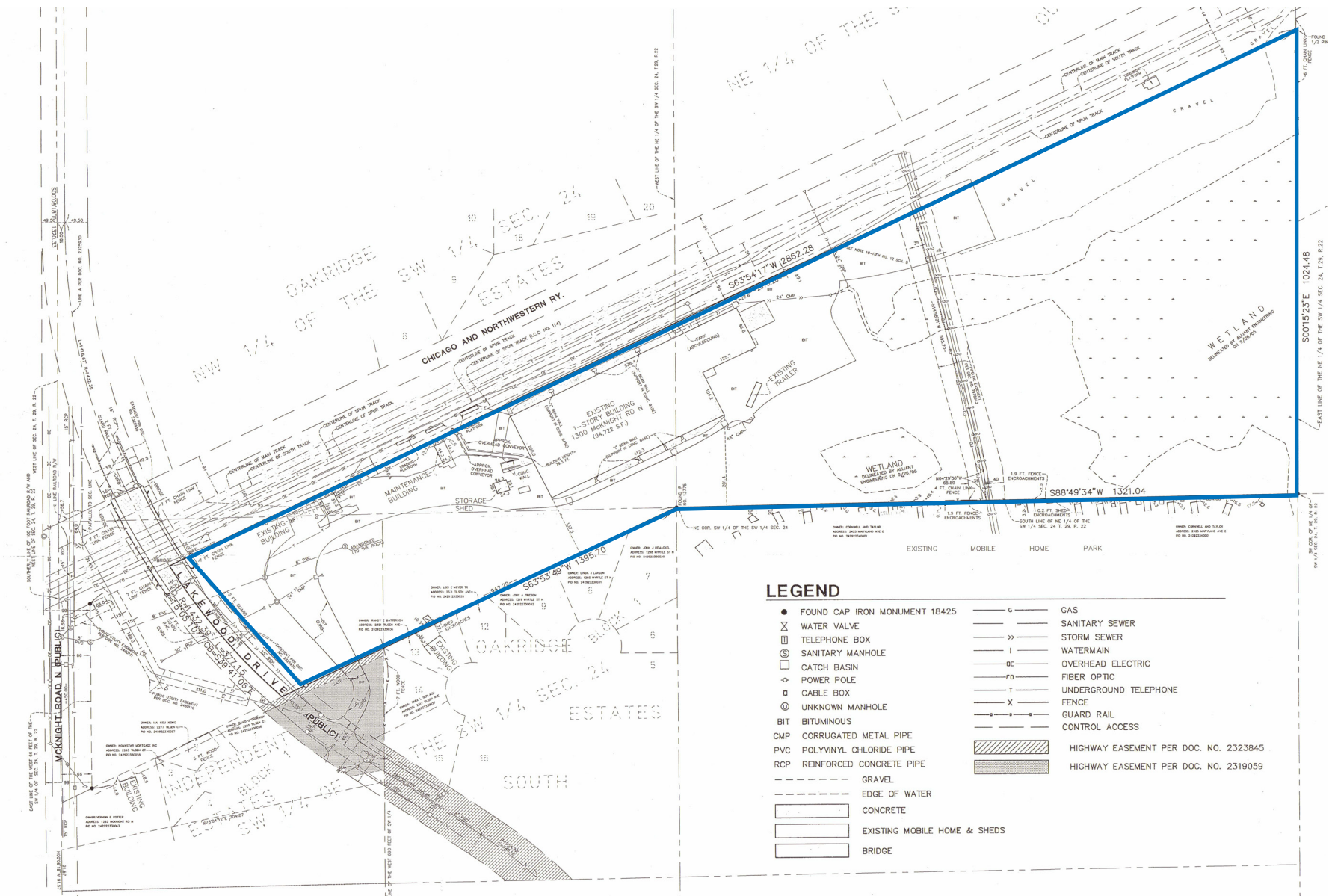
- Rare inner-ring material handling site
- On-site truck scale
- Large outdoor storage area
- Available immediately



CONTACT

RUSS CRAWFORD | 612.741.4800 | russ.crawford@transwestern.com
CONNOR NICHOLS | 612.359.1624 | connor.nichols@transwestern.com
PATRICK CRAWFORD | 612.615.1244 | patrick.crawford@transwestern.com


TRANSWESTERN
REAL ESTATE
SERVICES





CONTACT

RUSS CRAWFORD | 612.741.4800 | russ.crawford@transwestern.com
CONNOR NICHOLS | 612.359.1624 | connor.nichols@transwestern.com
PATRICK CRAWFORD | 612.615.1244 | patrick.crawford@transwestern.com

