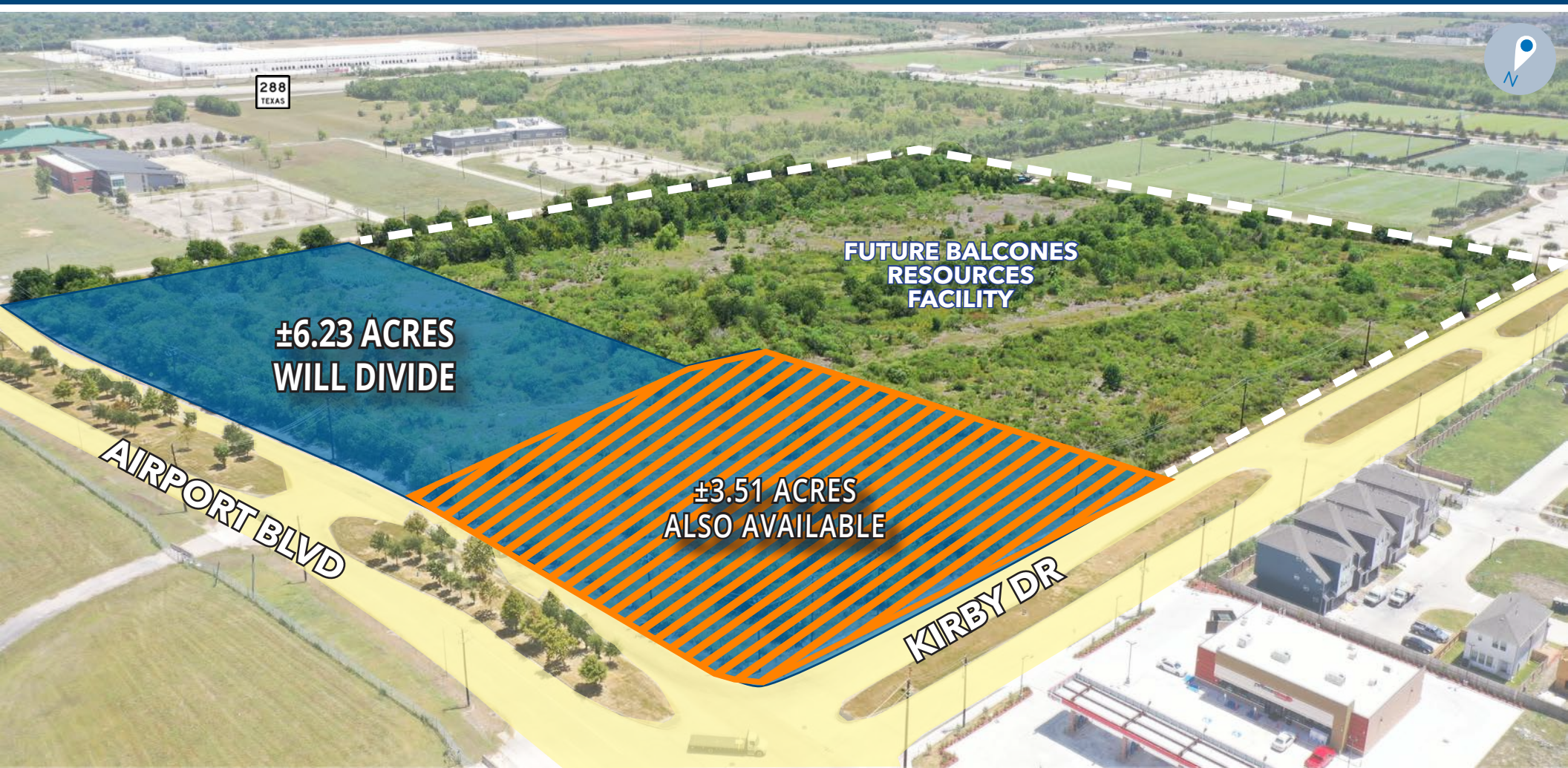


±6.23 ACRES OF LAND FOR SALE



**SEC of Airport Blvd
& Kirby Dr**

The information provided herein was obtained from sources believed reliable; however, Transwestern makes no guarantees, warranties or representations as to the completeness or accuracy thereof. The presentation of this property is submitted subject to errors, omissions, change of price or conditions, prior sale or lease, or withdrawal without notice. Copyright © 2023 Transwestern.

PROPERTY HIGHLIGHTS

Location	SEC of Airport Blvd and Kirby Dr Houston TX, 77045
Land Size	±6.23 Acres (Will Divide)
Frontage	±1,121' on Airport Blvd ±407' on Kirby Drive
Restrictions	Seller Intends to Deed Restrict Against Residential Use
Detention	Regional Detention Provided
Utilities	City of Houston
Pricing	Call Broker



OWNER WILL DIVIDE



PROPERTY FACING SOUTH



PROPERTY FACING WEST



PROPERTY FACING SOUTHEAST



PROPERTY FACING NORTH

DEMOGRAPHICS



POPULATION

1 Mile

3 Miles

5 Miles

3,132

78,807

272,650



WORKERS

1 Mile

3 Miles

5 Miles

675

24,567

228,394



HOUSEHOLDS

1 Mile

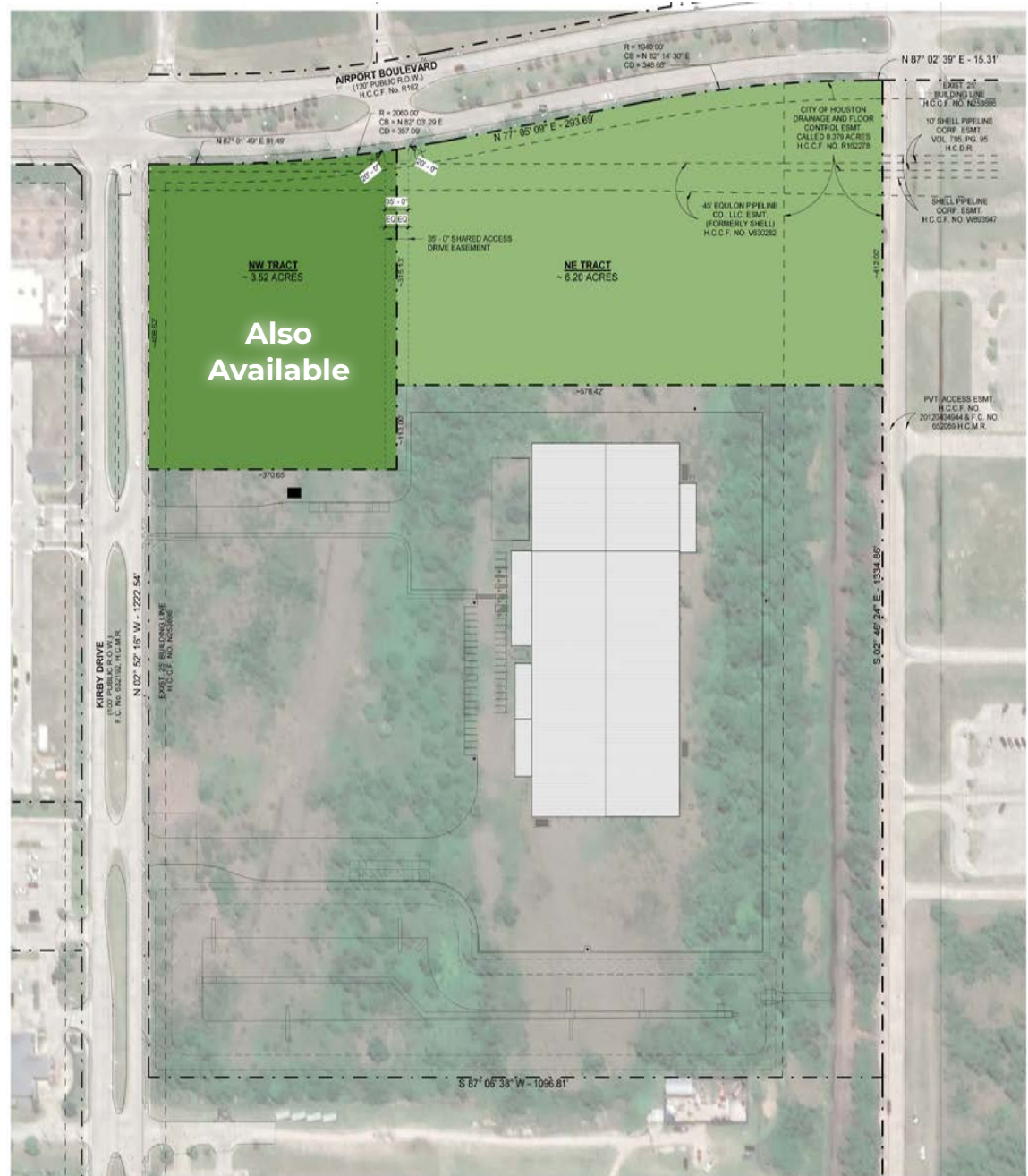
3 Miles

5 Miles

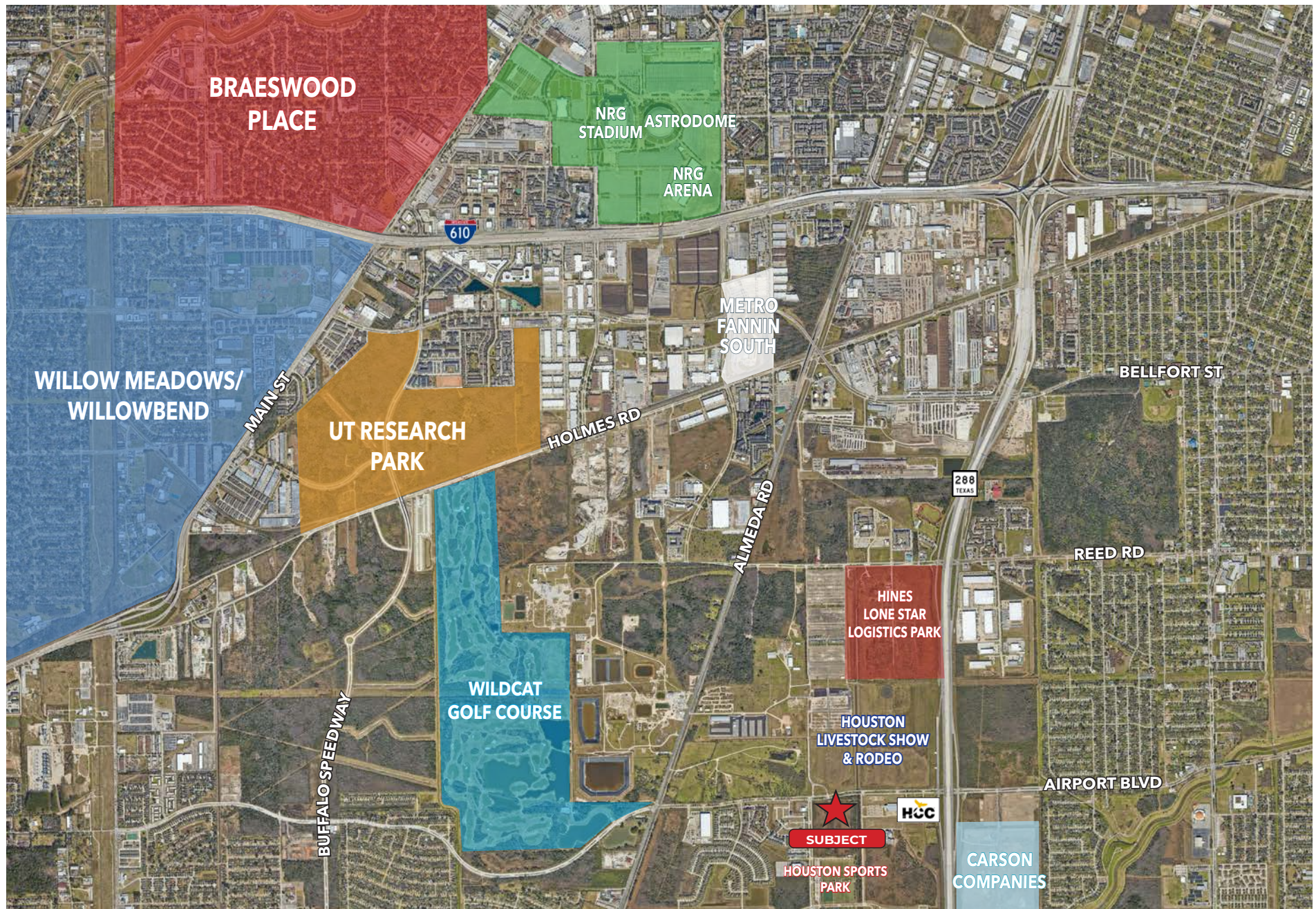
1,204

29,405

102,797



AREA ACTIVITY



PROXIMITY MAP





The information provided herein was obtained from sources believed reliable; however, Transwestern makes no guarantees, warranties or representations as to the completeness or accuracy thereof. The presentation of this property is submitted subject to errors, omissions, change of price or conditions, prior sale or lease, or withdrawal without notice. Copyright © 2023 Transwestern.

Contact Information:

Scott E. Miller
Senior Director
713.231.1637
scott.miller@transwestern.com

Jeff G. Peden, SIOR
Executive Managing Director
713.231.1640
jeff.peden@transwestern.com