

FOR LEASE

SYCAMORE LOGISTICS CENTER

8593 NW 96 ST. MEDLEY, FL 33166



www.sycamorelogisticscenter.com



826 PALMETTO EXPRESSWAY

27 OKEECHOBEE RD 27

BUILDING A
±41,500 SF (2 Units)

BUILDING B
±50,000-173,000 SF



PALMETTO EXPRESSWAY
IMMEDIATE ACCESS

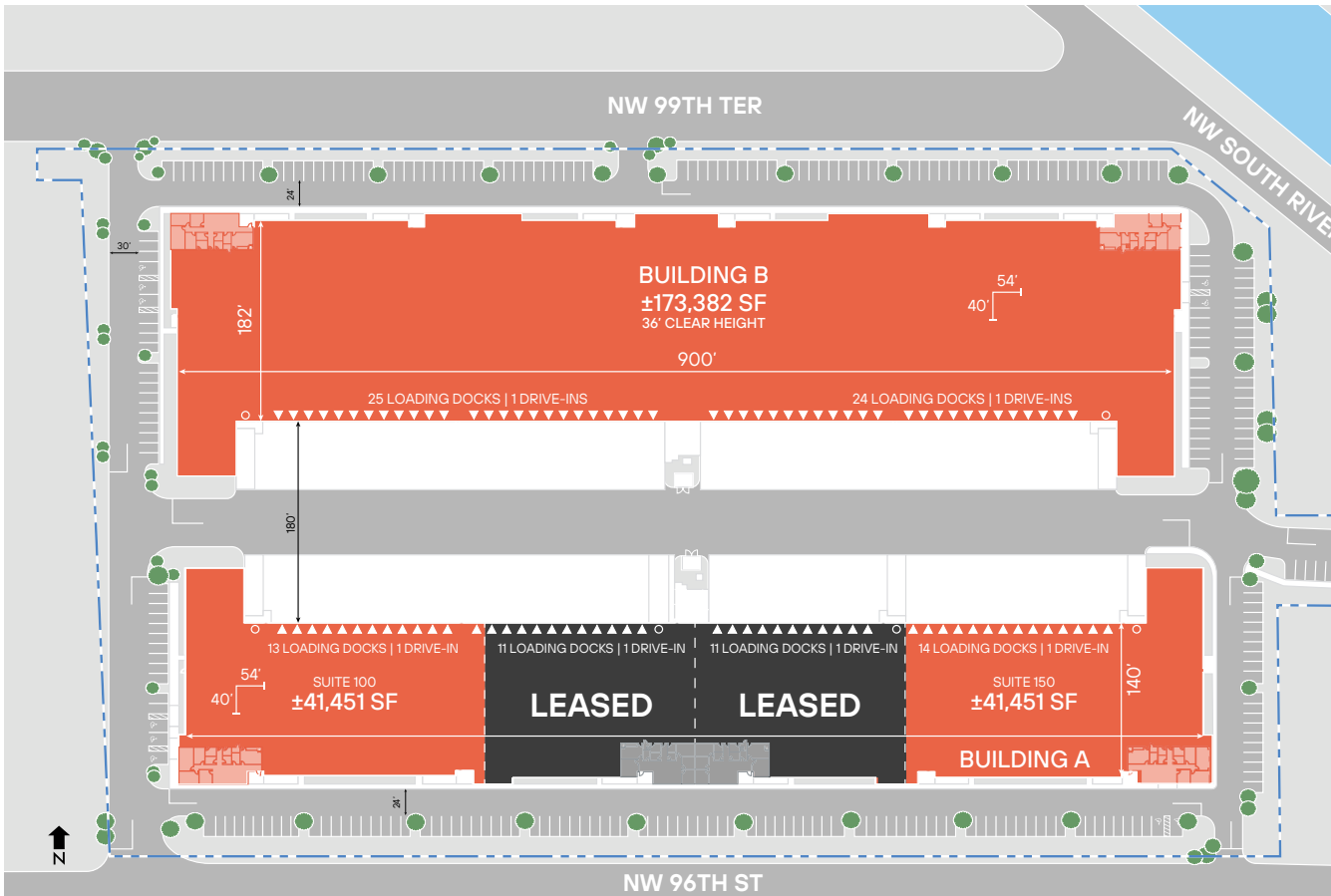
36' CLEAR
CEILING HEIGHT

IMMEDIATE
OCCUPANCY

Leasing by:



SITE PLAN & SPECIFICATIONS



	BUILDING A	BUILDING B
ADDRESS	8593 NW 96 ST	8600 NW 99 TER
BUILDING SIZE	±137,074 SF	±173,382 SF
AVAILABLE	±41,500 SF (2 UNITS)	±50,000-173,382 SF
SPEC OFFICE	±2,340 SF	±2,344 SF
CLEAR HEIGHT	36'	36'
LOADING FORMAT	Rear Load	Rear Load
LOADING DOCKS	49 (9' X 10')	49 (9' X 10')
DRIVE-IN DOORS	4 (12' X 14')	2 (12' X 14')
TRUCK COURT DEPTH	180' (Shared)	180' (Shared)
CAR PARKING	137	161
COLUMN SPACING	54' X 40' (Typical)	54' X 40' (Typical)
SPEED BAYS	60'	60'
LIGHTING	LED	LED
SPRINKLER SYSTEM	ESFR	ESFR
ELECTRIC	2,000 AMPS	2,000 AMPS
CERTIFICATIONS	LEED GOLD	LEED GOLD

BUILDING A – SPEC SUITES

SUITE 100	SUITE 120	SUITE 130	SUITE 150
41,451 SF TOTAL	27,086 SF TOTAL	27,086 SF TOTAL	41,451 SF TOTAL
2,340 SF SPEC OFFICE	2,231 SF SPEC OFFICE	2,231 SF SPEC OFFICE	2,340 SF SPEC OFFICE
13 DOCK DOORS	11 DOCK DOORS	11 DOCK DOORS	14 DOCK DOORS
1 DRIVE-IN	1 DRIVE-IN	1 DRIVE-IN	1 DRIVE-IN
36' CEILING HEIGHT	36' CEILING HEIGHT	36' CEILING HEIGHT	36' CEILING HEIGHT
\$17.95/SF NNN	LEASED	LEASED	\$17.95/SF NNN

LOCAL ACCESS

DRIVING DISTANCES

OKEECHOBEE RD (US 27)

IMMEDIATE ACCESS

826 / PALMETTO EXPRESSWAY

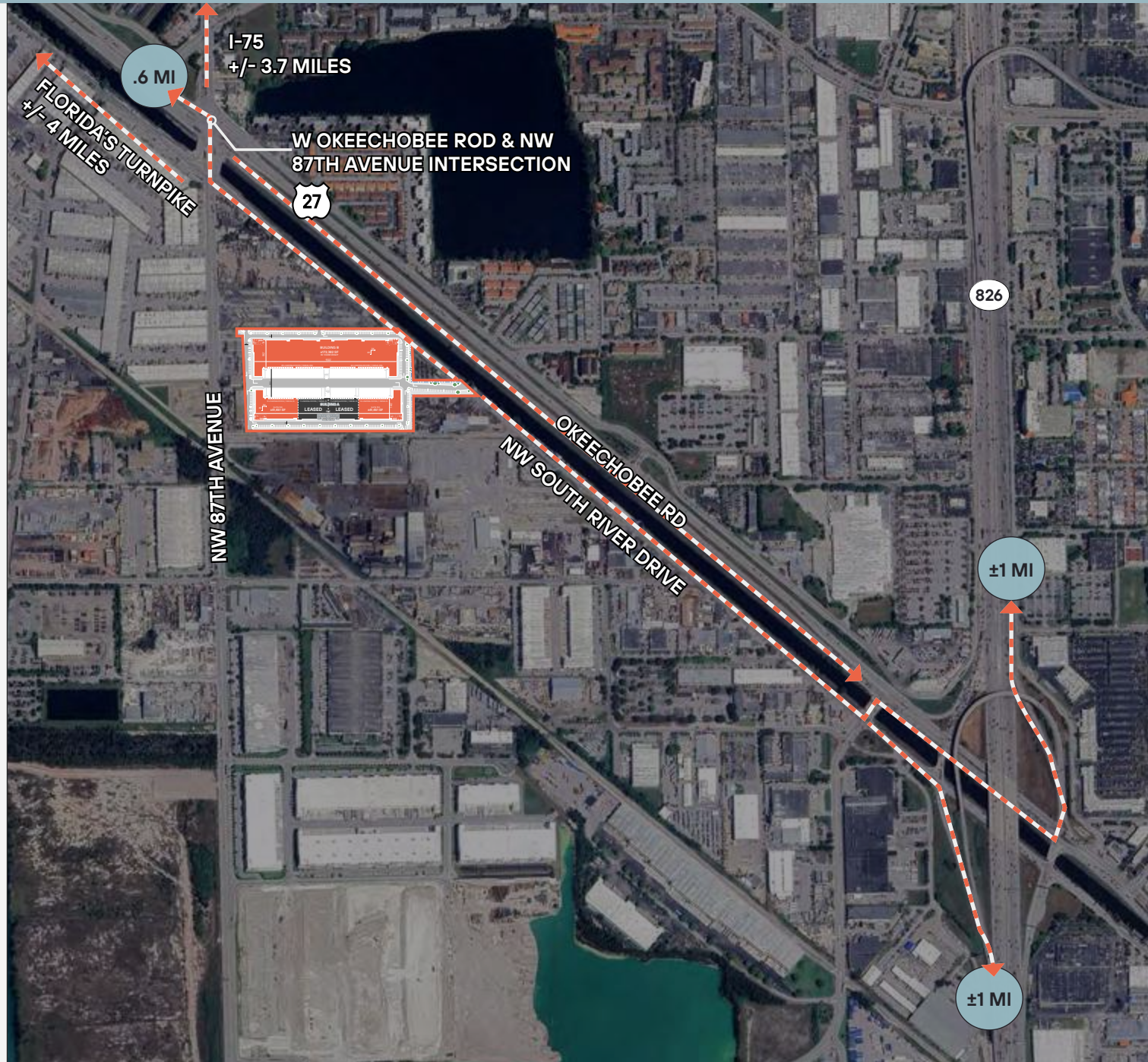
±1 MI

LOCAL HIGHLIGHTS








FRONTAGE
OKEECHOBEE RD
40,000+ VEHICLES PER DAY

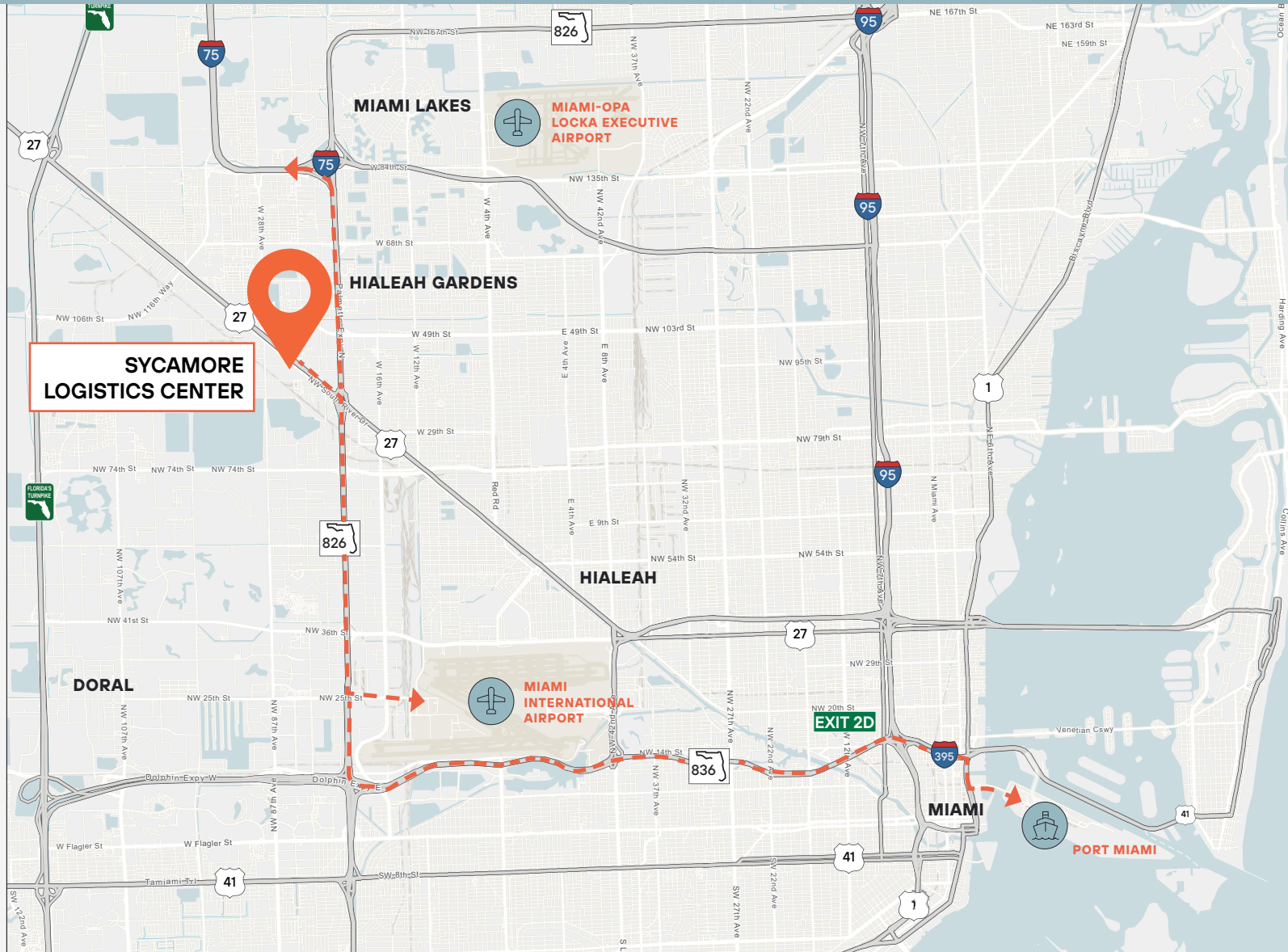
~35% OF
LABOR FORCE IS
INDUSTRIAL WORKERS

3 MILE RADIUS



DRIVING DISTANCES

- 
OKEECHOBEE RD
±0.4 MI
- 
PALMETTO EXPRESSWAY
±1 MI
- 
INTERSTATE - 75
±3.7 MI
- 
FLORIDA'S TURNPIKE
±4 MI
- 
DOLPHIN EXPRESSWAY
±6.1 MI
- 
MIA AIRPORT
±6.1 MI
- 
PORT MIAMI
±13.3 MI



Leasing by:



CARLOS GAVIRIA
SENIOR VICE PRESIDENT
305.808.7313
carlos.gaviria@transwestern.com

WALTER BYRD
EXECUTIVE MANAGING DIRECTOR
305.808.7825
walter.byrd@transwestern.com

BEN EISENBERG
EXECUTIVE MANAGING DIRECTOR
305.808.7826
ben.eisenberg@transwestern.com

THOMAS KRESSE
EXECUTIVE MANAGING DIRECTOR
305.808.7827
thomas.kresse@transwestern.com



Transwestern Commercial Services Florida, LLC | 2 Alhambra Plaza | Suite 1030 | Miami, FL 33134 | www.transwestern.com

The information provided herein was obtained from sources believed reliable; however, Transwestern makes no guarantees, warranties or representations as to the completeness or accuracy thereof. The presentation of this property is submitted subject to errors, omissions, change of price or conditions, prior sale or lease, or withdrawal without notice. Copyright © 2026 Transwestern Licensed Real Estate Broker.