

714 CANAL STREET

NEW ORLEANS, LOUISIANA



714 CANAL STREET

- 5-story Historic Building on Canal Street
- 1st Floor Retail Opportunity
- Opportunity for Flagship Retail Presence
- Floors 2-5 to be converted to short term residential
- Located in the heart of Canal Street, the famous thoroughfare bordering the Central Business District and the French Quarter
- New Orleans has 18 Million Visitors annually spending \$8.7 Billion Dollars
- Zoning District: CBD-2
- Dual means of Egress allows use of ALL floors
- Pedestrian count : 24,105 Weekly
34,624 Saturdays
674,926 Monthly

FOR LEASE

- 1st Floor: 4,300 SF



DOWNTOWN AT A GLANCE

18 MILLION

Visitors Annually Spending

\$8.7 BILLION

142,764

Residents, Workers & Visitors Daily

6,775

Apartments & Condos

20,355

Hotel Rooms

8,928,318

SF Of Class A Office

241

Retailer Stores

175

Restaurants & Bars

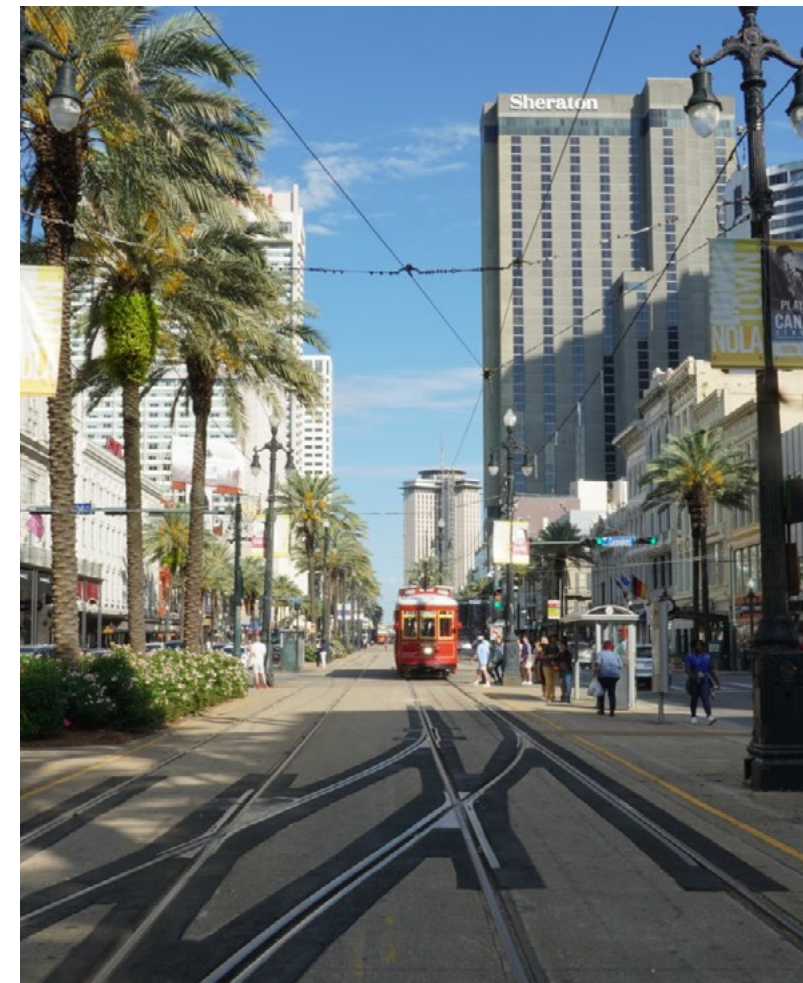
60

Sidewalk Cafes



CANAL STREET

At a grand 171 feet wide, traversed by streetcars, taxis, automobiles, cyclists and pedestrians, Canal Street is more than just a major downtown thoroughfare. Throughout its 210-year history, it also has served as an entertainment district, shopping destination, parade route, and above all, a gathering place for New Orleanians. Stand on this broad, bustling street and you can see New Orleans' history all around you—from the historic French Quarter to the modern Central Business District.



DEMOGRAPHICS



MSY

KENNER

POPULATION

	1 Mile	3 Miles	5 Miles
2018	16,251	181,228	369,226
2023	17,182	188,740	383,085

DAYTIME POPULATION

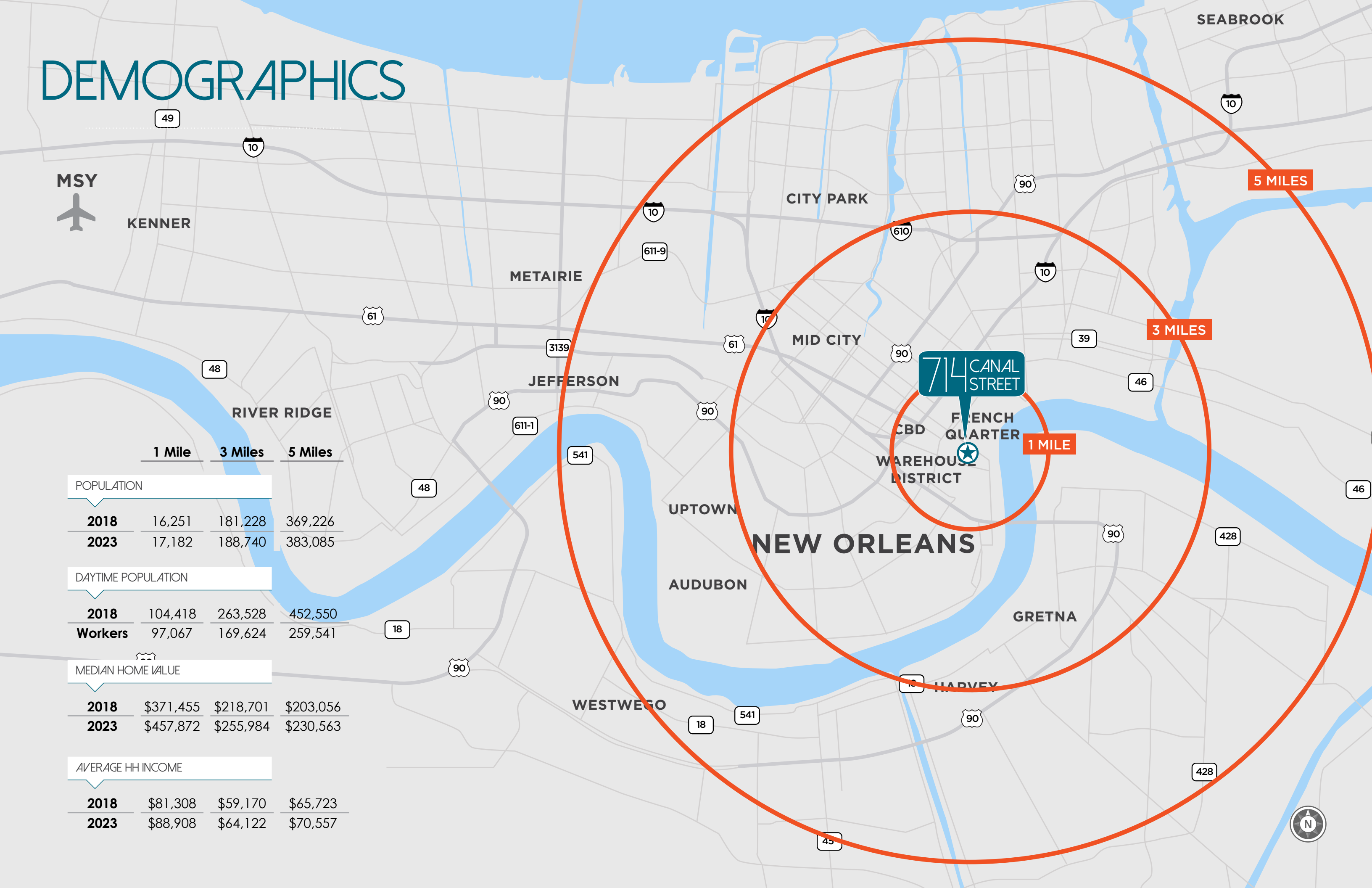
	1 Mile	3 Miles	5 Miles
2018	104,418	263,528	452,550
Workers	97,067	169,624	259,541

MEDIAN HOME VALUE

	1 Mile	3 Miles	5 Miles
2018	\$371,455	\$218,701	\$203,056
2023	\$457,872	\$255,984	\$230,563

AVERAGE HH INCOME

	1 Mile	3 Miles	5 Miles
2018	\$81,308	\$59,170	\$65,723
2023	\$88,908	\$64,122	\$70,557



714 CANAL STREET

1 MILE

3 MILES

5 MILES



TRADE AREA

FRENCH QUARTER

CBD

WAREHOUSE DISTRICT

714 CANAL STREET

LOUISIANA SUPERDOME

SMOOTHIE KING CENTER

HYATT REGENCY

ROUSES MARKETS

ACE HOTEL NEW ORLEANS

BLAKE HOTEL New Orleans

HARRAHS NEW ORLEANS

HILTON HOTELS & RESORTS

Café Du Monde

HARD ROCK HOTEL

COURTYARD Marriott

HYATT

Antone's

Café Du Monde

CVS/pharmacy

JAX BREWERY

H&M VANS URBAN OUTFITTERS

canal place
Allen Edmonds, Anthropologie, Banana Republic, BCBG, Brooks Brothers, J.Crew, L'Occitane, Louis Vuitton, Lululmon, MCM, Michael Kors, MF Saks Fifth Ave, Tiffany & Co., Tory Burch, Vineyard Vines, White House | Black Market

RIVERWALK NEW ORLEANS
Coach, Forever 21, Fossil, Francesca's, Guess, Gap, Harley-Davidson, Levi's, Lindt, Neiman Marcus Last Call, Nordstrom Rack, Tommy Bahama, Tommy Hilfiger

SAENGER THEATRE

THE RITZ-CARLTON

TRUE RELIGION BRAND JEANS

Acme OYSTER HOUSE

DICKIE BRENNAN'S STEAKHOUSE

DAISY DUKES

Amorino

Marriott

MORTON'S

SHAKE SHACK

FOODCRAFTS

McALISTER'S DELI

DOMENICA

WALDORF ASTORIA HOTEL & RESIDENCES

WYNDHAM

Foot Locker

WALK-ON'S BISTREAUX & BAR

DAVE & BUSTER'S

HOMWOOD SUITES BY HILTON

LE PAVILLON

POYDRAS ST

ST CHARLES AVE

MAGAZINE ST

ST PETERS ST

CONVENTION CENTER BLVD

COMMERCE ST

FULTON

RENAISSANCE HOTELS

OMNI HOTELS & RESORTS

PONTCHARTRAIN EXPY

POYDRAS ST

BARONNET ST

CANAL ST

BOURBON ST

ST LOUIS ST

ST PETER ST

N RAFAEL ST

10

10

90

90



NEW ORLEANS

DRIVE TIMES

5,000,000 people are located in the super-region of New Orleans Including:

Lake Charles, LA	2 Hours 50 Mins
Lafayette, LA	2 Hours
Baton Rouge, LA	1 Hour 25 Mins
Jackson, MS	2 Hours 50 Mins
Biloxi-Gulfport, MS	1 Hour 20 Mins
Mobile, AL	2 Hours
Pensacola, FL	2 Hours 40 Mins

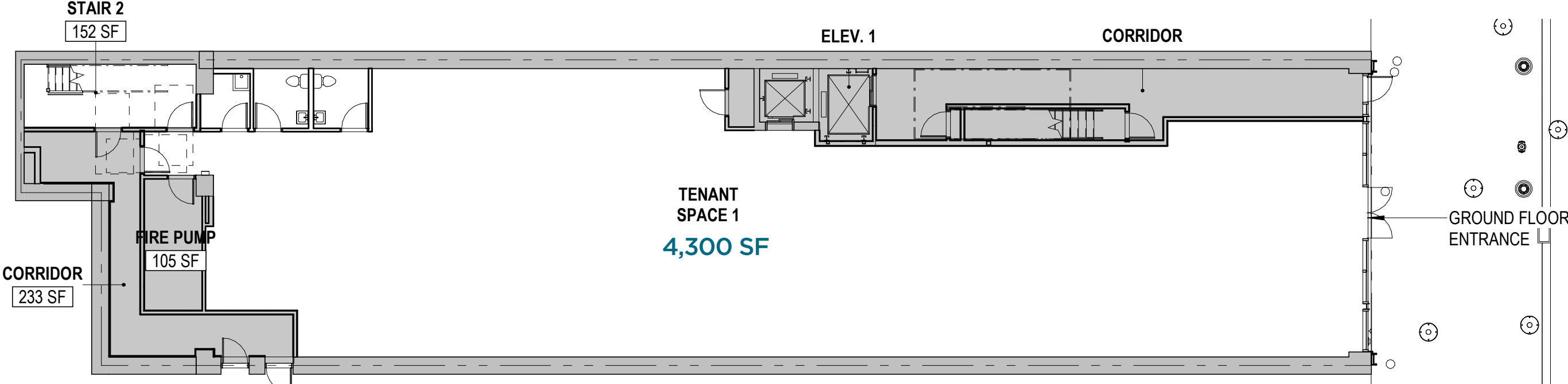
NEW
ORLEANS

714 CANAL
STREET



1ST FLOOR

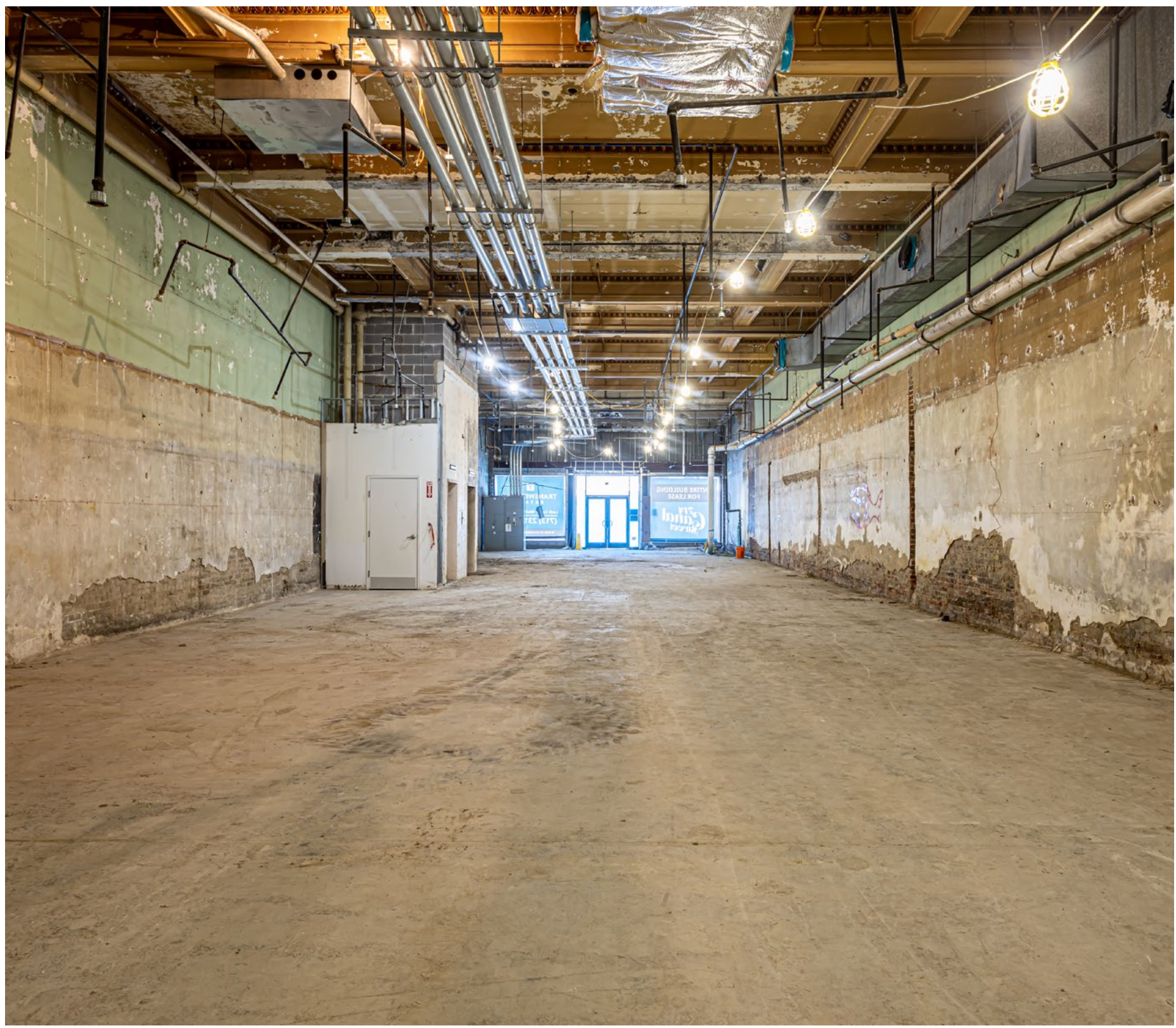
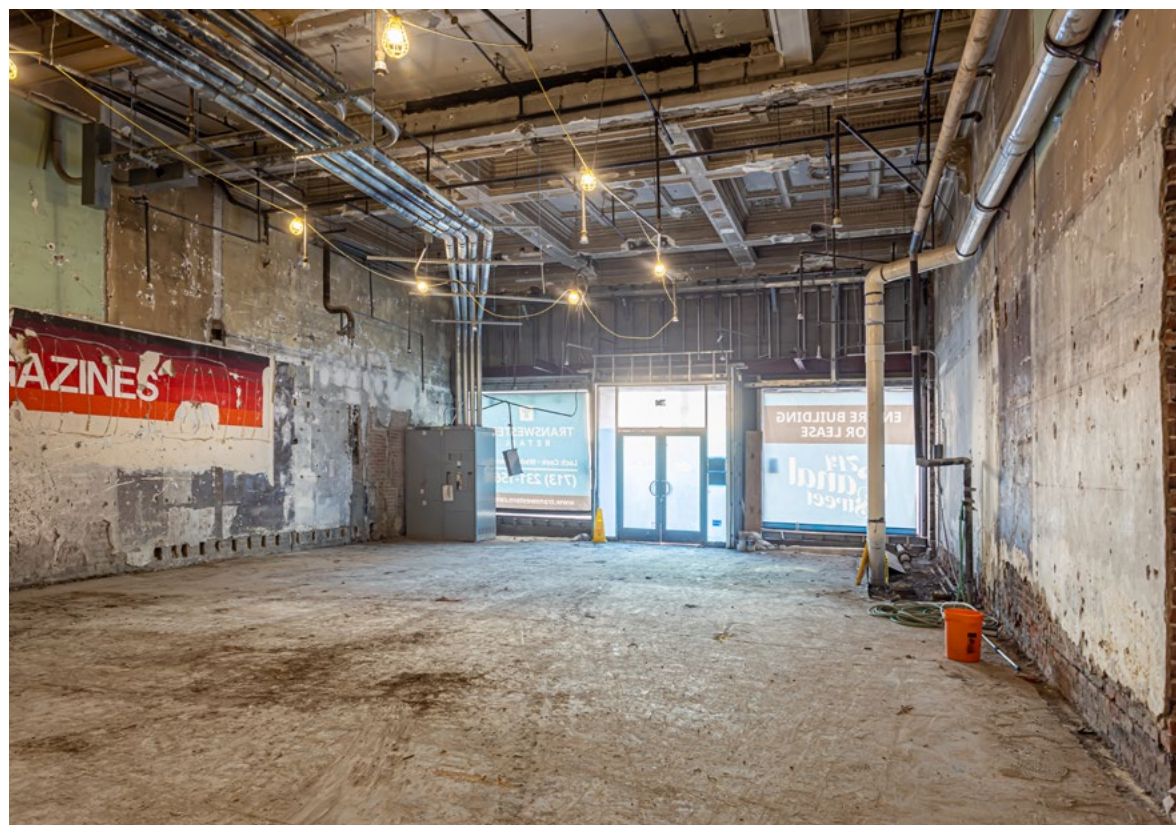
4,300 SF



1 LEVEL 1
PR-1.16 SCALE: 1/16" = 1'-0"

OPEN FLOORPLAN

with the buildings original coffered plaster ceilings throughout



714 CANAL STREET

NEW ORLEANS, LOUISIANA

LOCH COOK

Vice President

713-231-1566

Loch.Cook@transwestern.com

