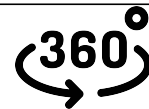
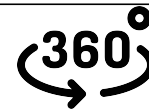


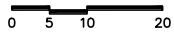
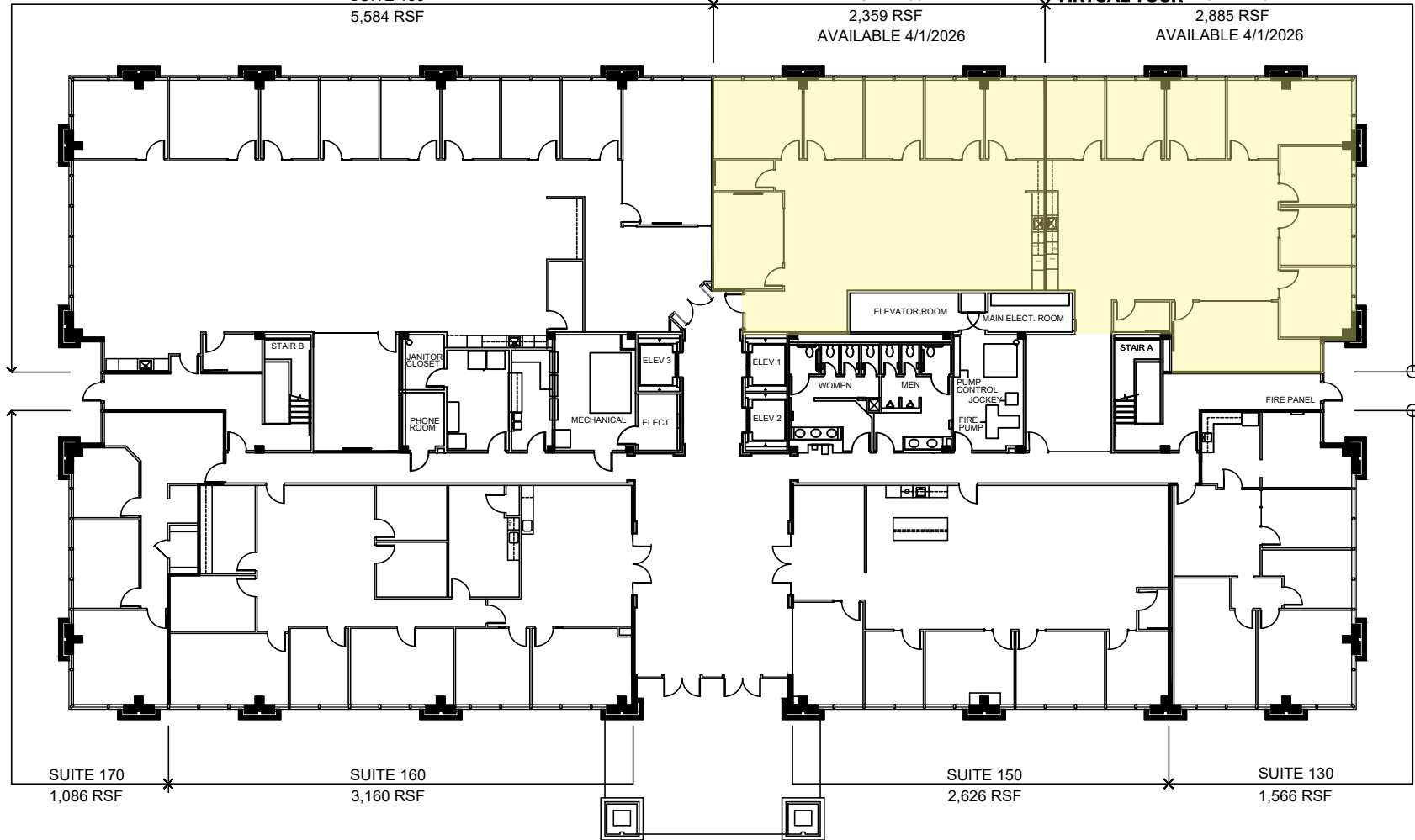
**VIRTUAL TOUR SUITE 180**  
5,584 RSF



**VIRTUAL TOUR SUITE 100**  
2,359 RSF  
AVAILABLE 4/1/2026



**VIRTUAL TOUR SUITE 120**  
2,885 RSF  
AVAILABLE 4/1/2026



Floor plans are for conceptual purposes only; they are not to scale and may not reflect existing conditions. As-builts must be verified. Not for regulatory approval, permitting, or construction.



**LEASING CONTACT**  
**OFFICE LEASING:**  
LOUANN PEREIRA  
LOUANN.PEREIRA@TRANSWESTERN.COM  
713-272-1267  
**CONTACT**  
**PROP. MANAGEMENT:**  
KATY MAYER  
KATY.MAYER@TRANSWESTERN.COM  
281-494-2128

# KENSINGTON II

## 1650 HIGHWAY 6

### LEVEL 01

CB223328\_01-DC

AUGUST 31, 2023

**ARCHITECT CONTACT**  
5065 Westheimer Rd., Ste #1100,  
Houston, TX 77056  
Phone: (713) 783.5900 | Fax: (713) 783.6066  
www.cdi-douglass-pye.com

