



BRIARLAKE  PLAZA

# Natural Connections

Natural Beauty



Cousins



Transwestern



# An Unmatched Office Experience

BriarLake Plaza stands as a premier destination for Class A office space in the Houston market. The property features a modern fitness center, spacious conference rooms, a diverse selection of dining options within easy walking distance, and exceptional outdoor spaces. Ideally situated in Westchase, it offers convenient access to three major thoroughfares.

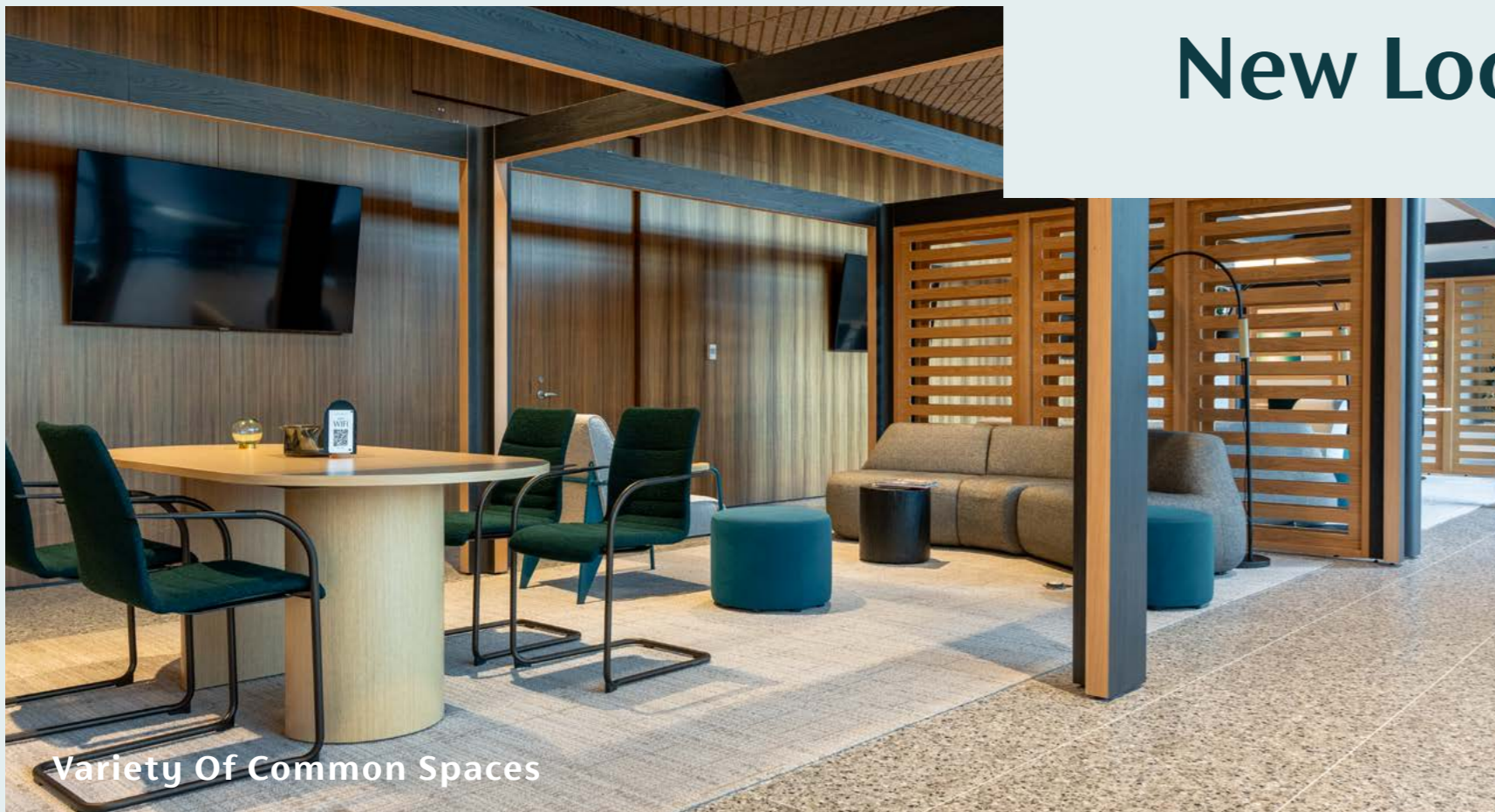


Open Lobby Seating

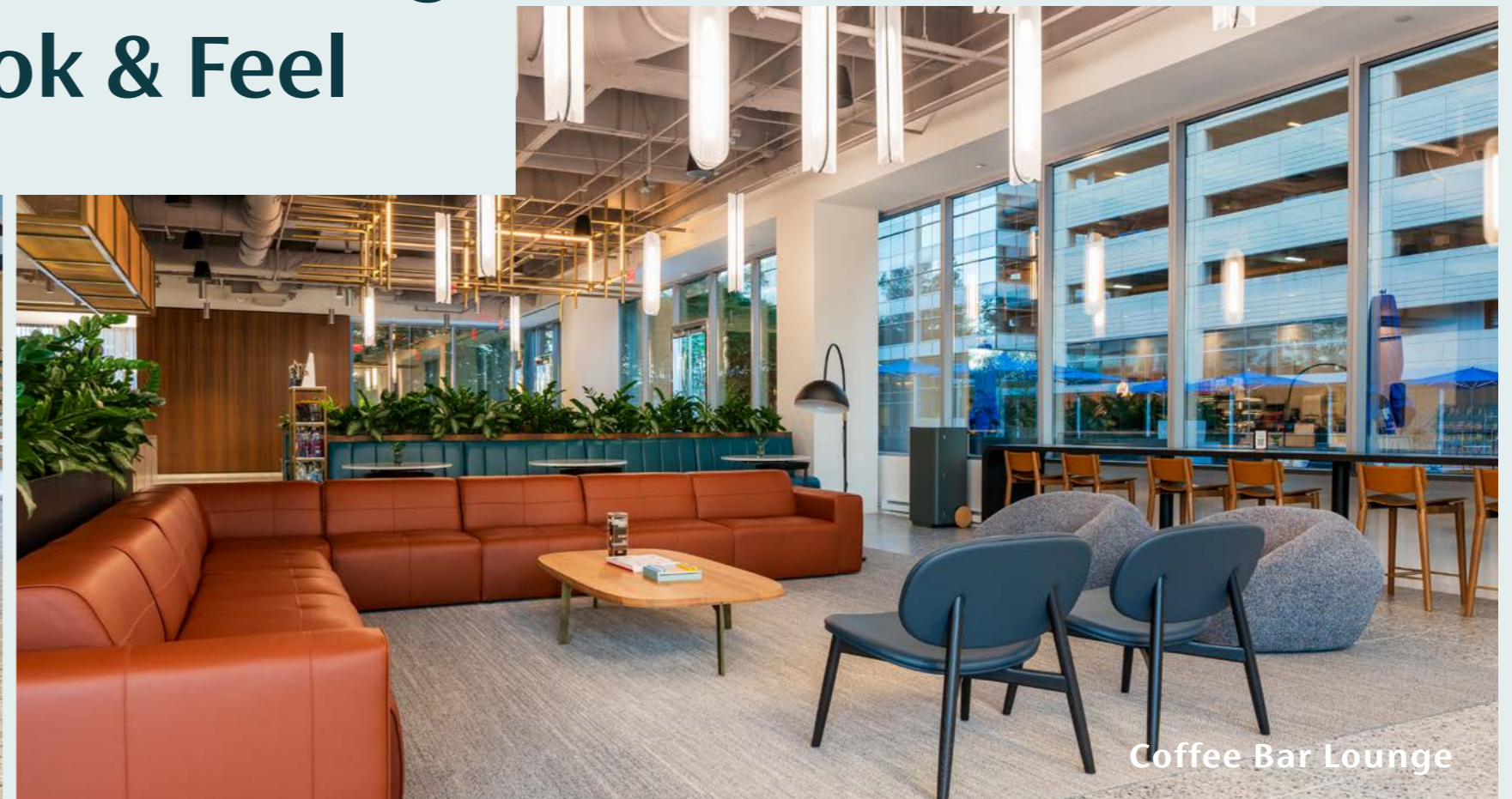


Coffee Bar & Grab-N-Go Lunch Options

## Discover our Exciting New Look & Feel



Variety Of Common Spaces



Coffee Bar Lounge



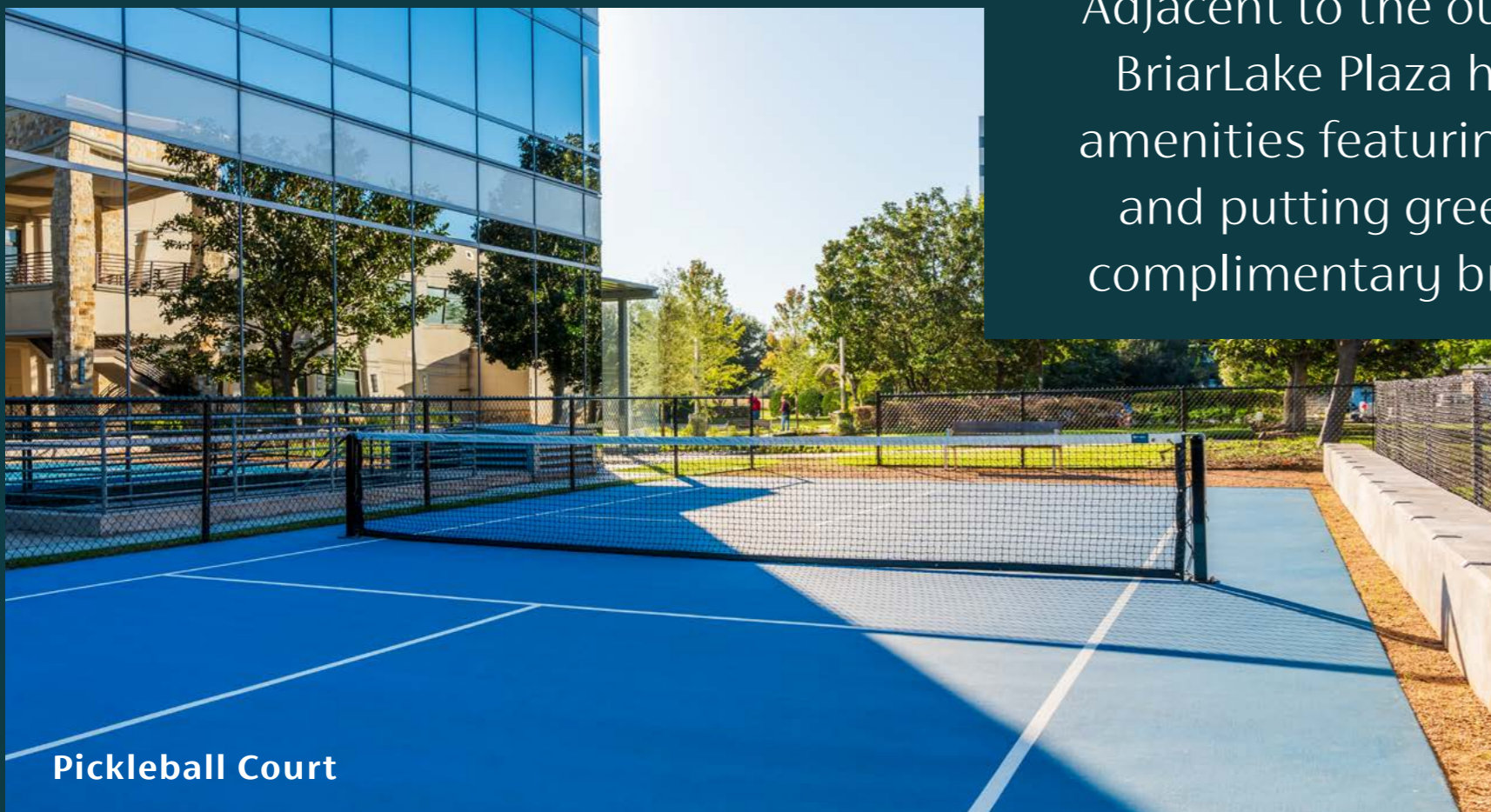
Outdoor Walking Trail + Seating Area



Putting + Chipping Green

# Bridging the Office to the Outdoors

Adjacent to the outdoor walking trail, BriarLake Plaza has unveiled a new amenities featuring a pickleball court and putting green. Complete with complimentary branded equipment.



Pickleball Court



Pocket Park + Seating Area



Seating Area



Golf Simulator

# Explore the Tenant Lounge



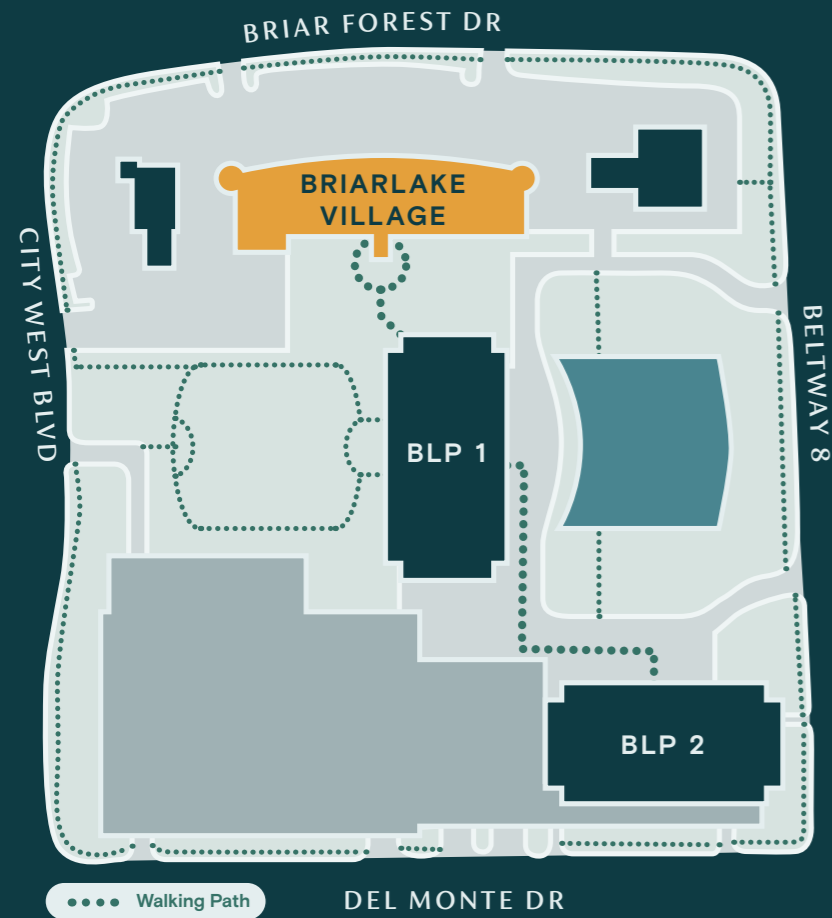
Shuffleboard Table



Billiard Pool Table

# Walkable Eateries

Enjoy convenient on-site dining options with both on-campus eats and easy access to nearby restaurants – all within a minute's walk.



## BRIARLAKE VILLAGE



Brove Cafe Located at BLP 2



# On-Site Fitness Center

High performance fitness facility with 2 Fitness Centers including, classroom with rotating classes, weight training and cardio equipment, TVs, Wi-Fi, and spa-like locker rooms, towel service, self-locking lockers, high ceilings and abundant natural light. With views of the surrounding greenspace, fitness has never been so rejuvenating.



Towel service



Natural light



Full service locker rooms with self-locking lockers



17.5 foot high ceilings



# State of the Art Conference Facility

The conference facility is designed to be adaptable for a variety of uses, particularly training and classroom settings. Its flexible design allows for seamless integration of technology, that features two auditoriums, each with a capacity of 75, which can be expanded to accommodate over 150 attendees.

150+

Person classroom capacity



Plug and play set up



High speed  
Wi-Fi



Pre-reception area for  
convenient catering needs





# Premier Access

Located right off of Beltway 8 in the Westchase District with convenient access to Memorial Corridor

## Drive Times

- 1**  
Minute to the Sam Houston Tollway (Beltway 8)
- 2**  
Minutes to Westheimer Rd
- 5**  
Minutes to the Katy Freeway (Interstate 10)
- 4**  
Minutes to Westpark Tollway (Via Beltway 8)
- 15**  
Minutes to 610  
(via Beltway 8 and Interstate 10 or Westpark Tollway)



Masraff's



City Centre



The General Public



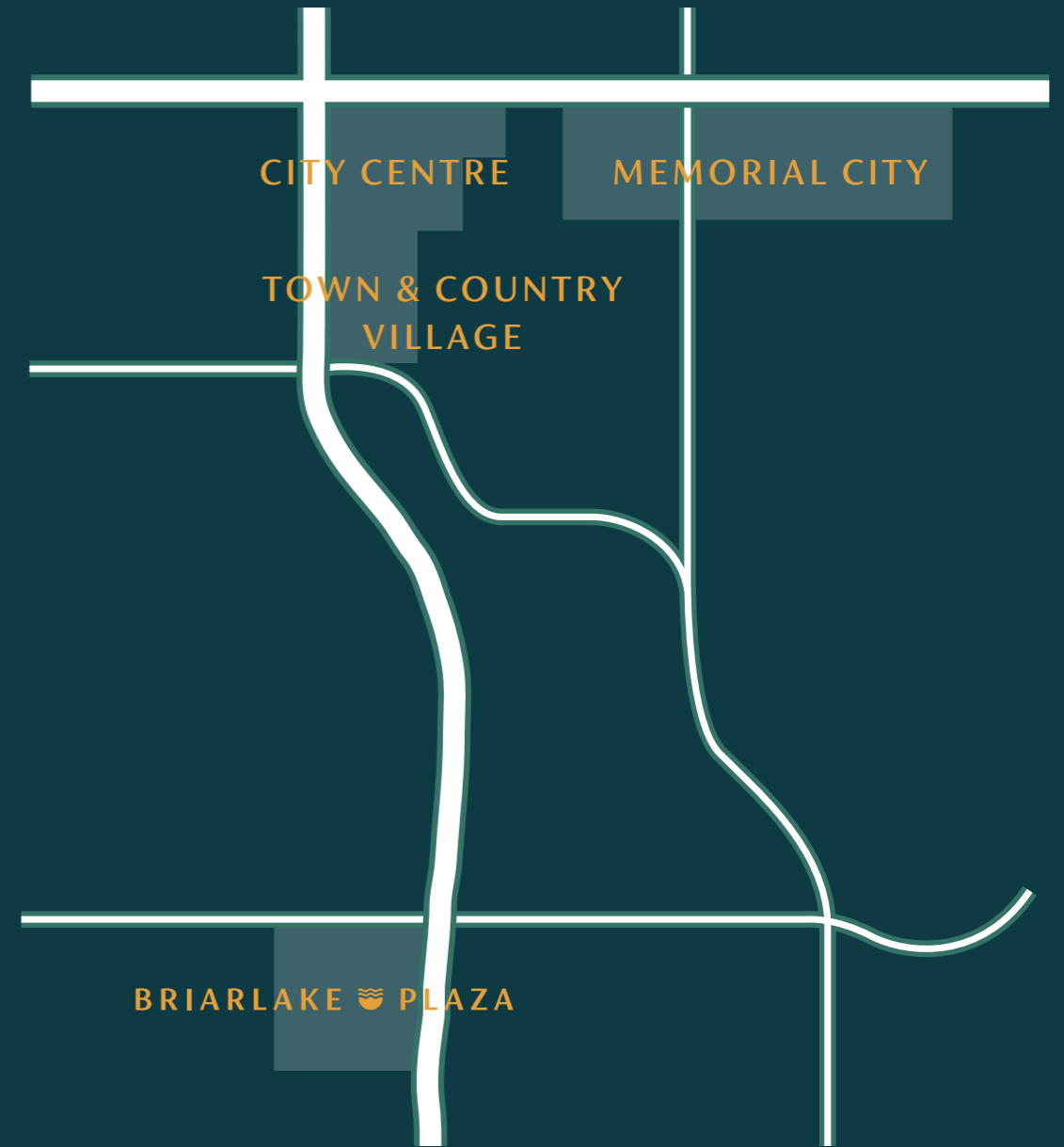
Hotel ZaZa



Bowl & Barrel

# Memorial

OFFICE CORRIDOR



184<sup>K</sup>

Population

136<sup>K</sup>

Employees

78<sup>K</sup>

Households

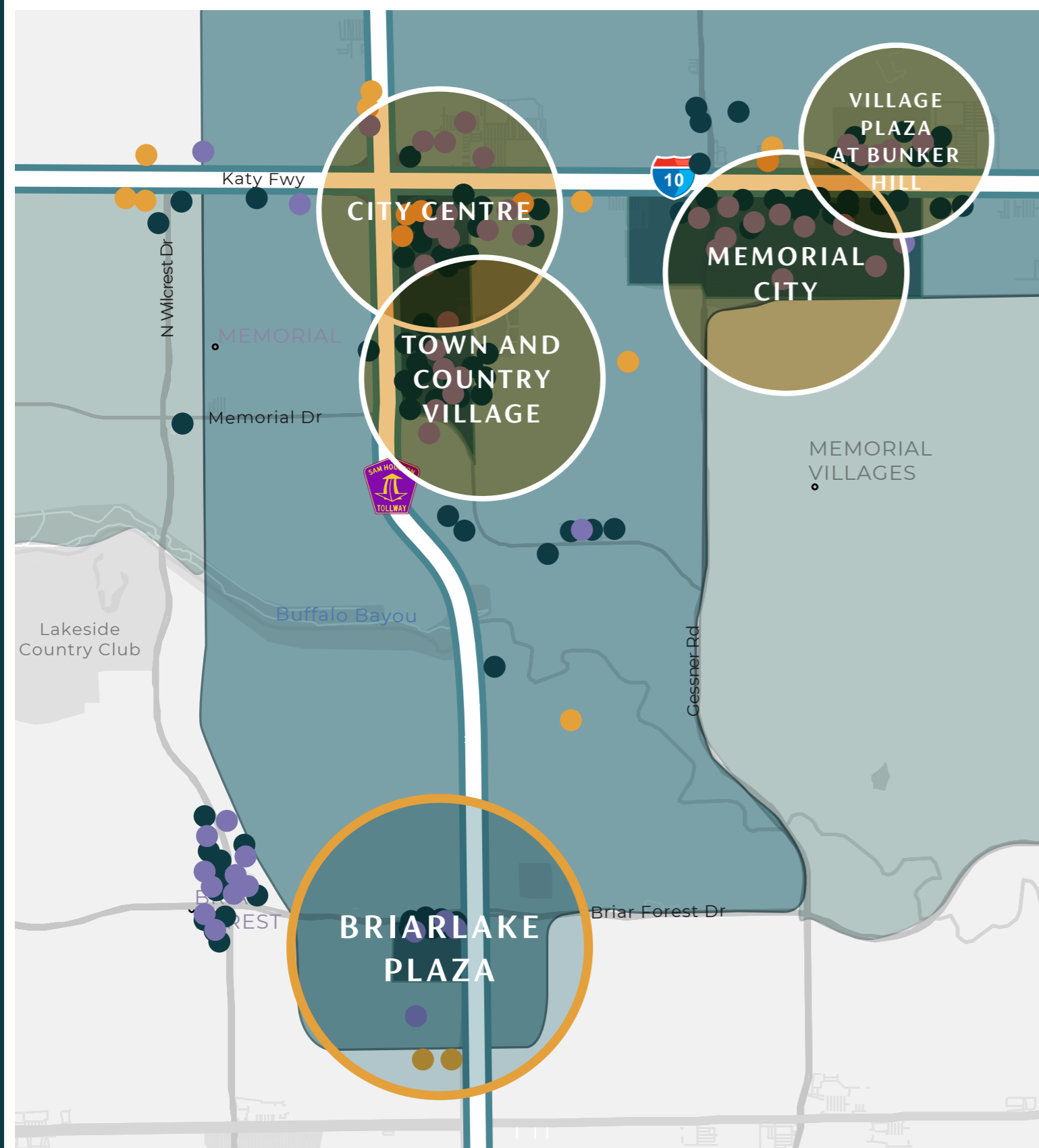
2,381

Retailers + Eateries

59

Hotels + Lodging

## Memorial Office Corridor



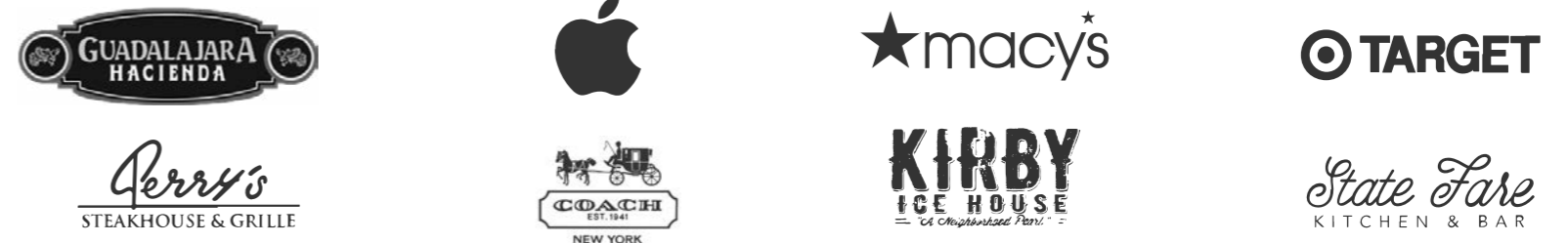
● Restaurants ● Shopping ● Hotels

# Rich and Diverse Location

Conveniently located in the Memorial Corridor within a 10-minute drive to all Memorial's most coveted shops, eateries and entertainment districts.

### MEMORIAL CITY

59 EATERIES | 142 SHOPS AND LIFESTYLE STORES



### CITY CENTRE

27 EATERIES | 21 SHOPS | 11 LIFESTYLE STORES



### TOWN & COUNTRY VILLAGE

16 EATERIES | 37 SHOPS | 13 LIFESTYLE STORES



### VILLAGE PLAZA AT BUNKER HILL

17 EATERIES | 13 SHOPS | 23 LIFESTYLE STORES



# BRIARLAKE PLAZA

FOR LEASING INFORMATION

**KATY GRAGG**

713.407.8709  
Katy.Gragg@transwestern.com

**ERIC ANDERSON**

713.407.8704  
Eric.Anderson@transwestern.com

