



# Wayzata Gateway

Invite Elegance Into  
Your Work







Luxury is the  
Feeling of  
Effortless Comfort





# Amenities

---



The building's green space was designed with intention. Emulating a meadow, it's a natural, restorative place for tenants to unwind.

---



Situated in the heart of Wayzata, the location offers convenient access to lakeside dining, boutique shopping, and vibrant community amenities.

---



An inviting outdoor patio is an extension of the workspace—a sunny spot that's as ideal for meetings as it is for coffee breaks.

---

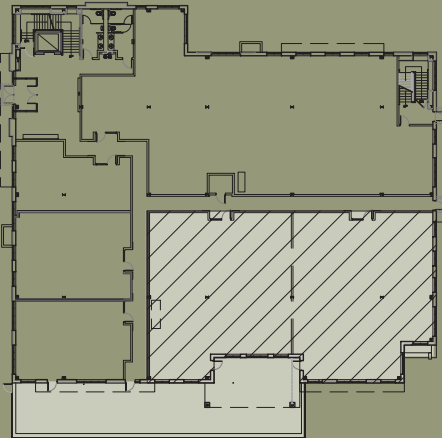


Spacious floorplates provide flexible layouts that accommodate collaborative work, private offices, and efficient operations.

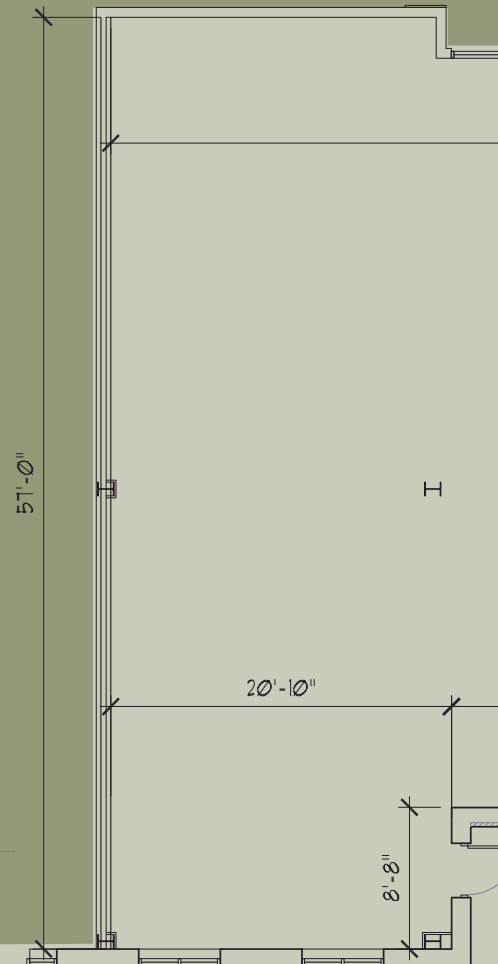
---

# Floorplan

KEY PLAN - 1ST FLOOR

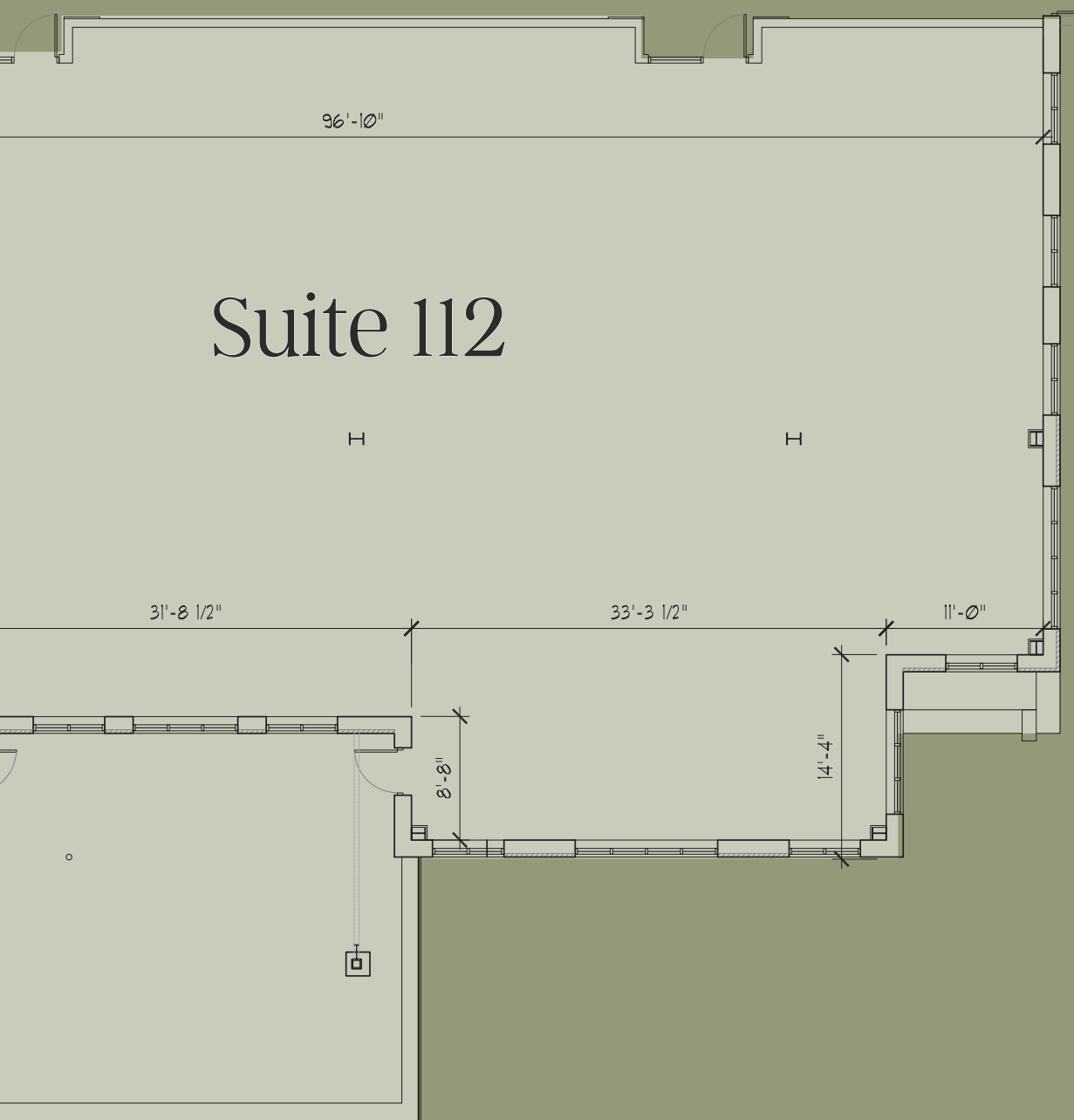


6,157 SF  
Available

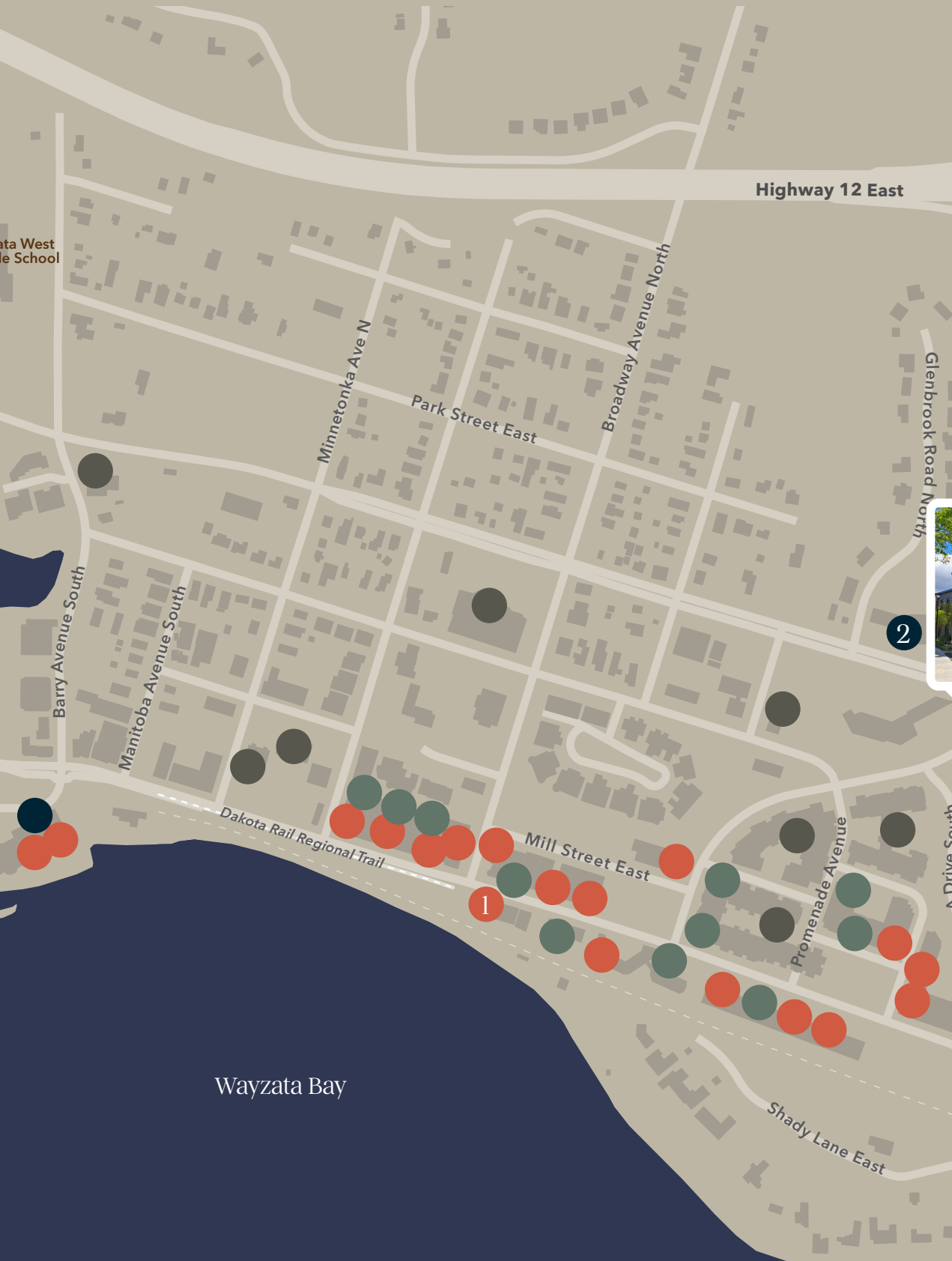


Shared Patio





# In the Area





Restaurants



Retail

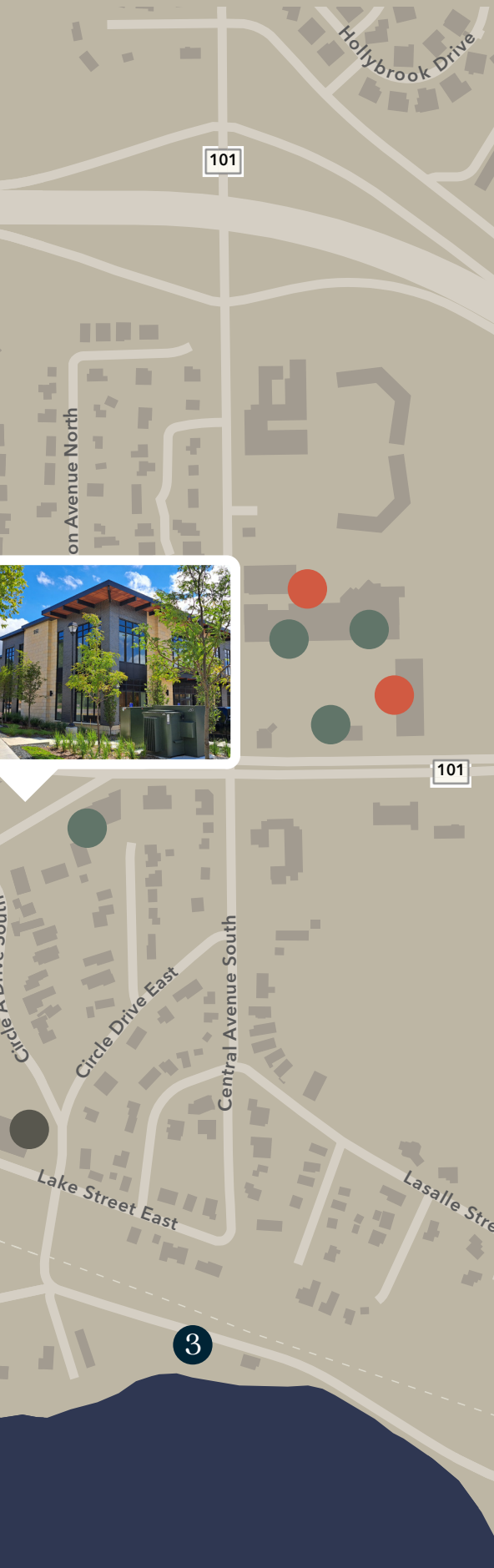


Apartments



Points of Interest





CoV Wayzata <sup>1</sup>



Farmer's Market <sup>2</sup>



Wayzata Yacht Club <sup>3</sup>



705 S Marquette Ave, Suite 900,  
Minneapolis, MN 55402

[transwestern.com](http://transwestern.com)



## Contact for more Information

Reed Christianson

(612) 359-1610  
[reed.christianson@transwestern.com](mailto:reed.christianson@transwestern.com)

Brett Draxler

(612) 359-1692  
[brett.draxler@transwestern.com](mailto:brett.draxler@transwestern.com)