

Power Systems Building

OFFICE SPACE FOR LEASE

1365 Corporate Center Curve, Eagan, MN 55121

8,798 SF
Available

Desirable Office
Address

Excellent Highway
Access

Business Park
Environment



About Power Systems Building

1365 Corporate Center Curve is a well-located office building in the heart of Eagan's established Corporate Center, offering a professional setting with excellent connectivity. The property provides convenient access to I-494, Highway 55, and Highway 13, making it an easy commute throughout the Twin Cities. Located just minutes from Minneapolis Saint Paul International Airport, Twin Cities Premium Outlets, and a strong mix of nearby restaurants, hotels, and services, the building offers everyday convenience and a strategic south-metro location for office users.

BUILDING AMENITIES & FEATURES

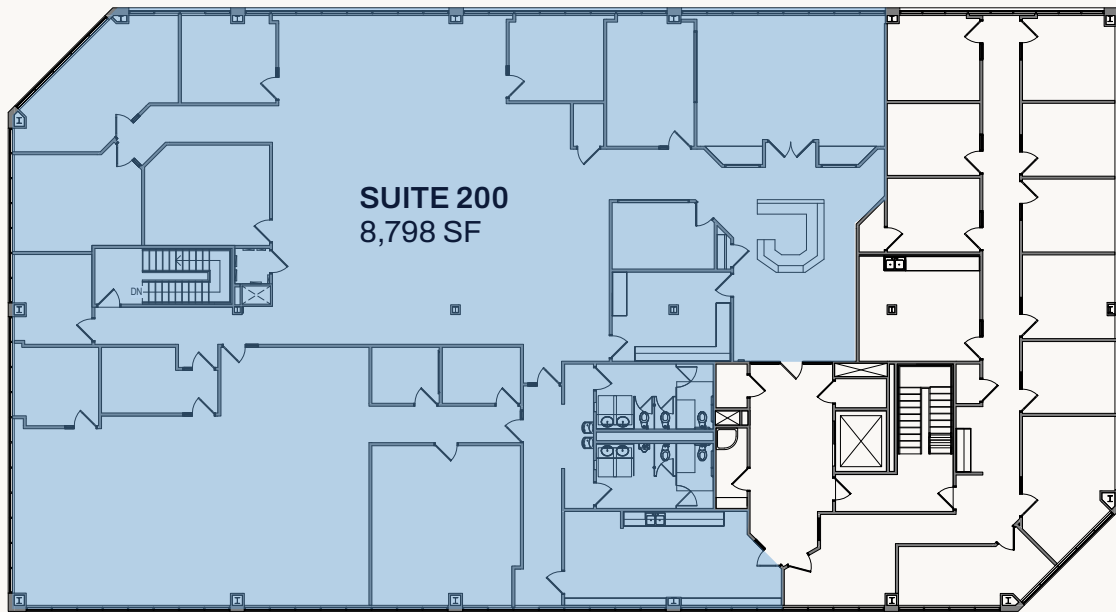
- Ample parking
- Key card access
- Responsive local ownership



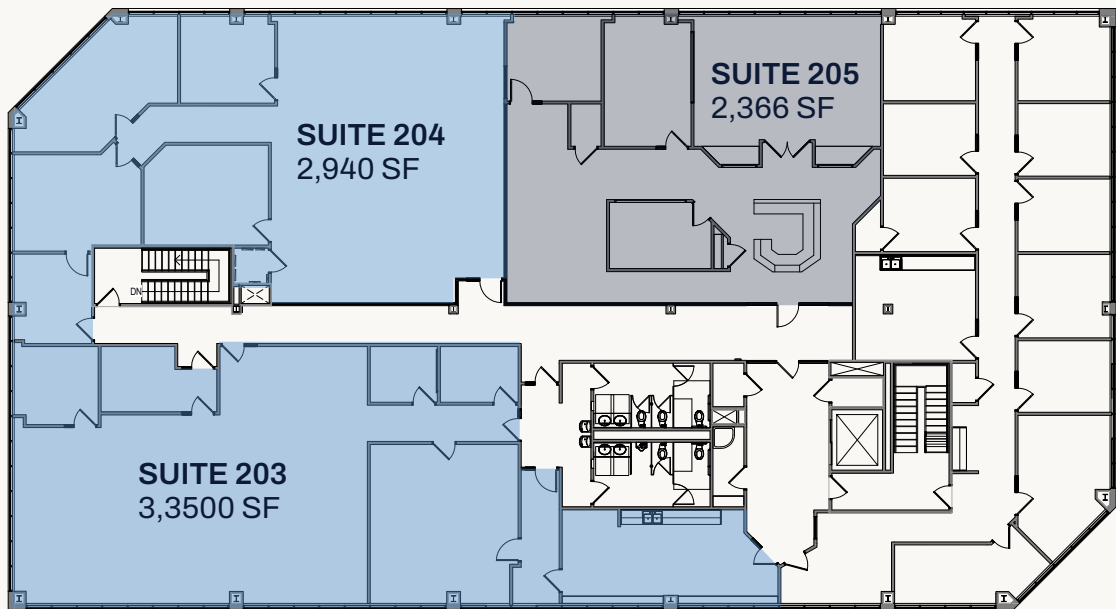
| | |
|---------------------------|------------------------------|
| BUILDING SIZE | 23,066 SF |
| YEAR BUILT | 1998 |
| AVAILABILITY | 3,000 - 8,798 SF |
| R/U FACTOR | 8% |
| PARKING | 125 STALLS |
| LEASE RATE | \$13.00 - \$16.00 PSF |
| OPERATING EXPENSES | \$5.40 |
| REAL ESTATE TAXES | \$3.68 |
| 2026 ESTIMATE | \$9.08 |



Current Floor Plan



Potential Floor Plan



Eric Rapp, SIOR

Senior Vice President
(612) 359-1635
eric.rapp@transwestern.com