

RETAIL SPACE FOR LEASE
YORKDALE SHOPPES
Southdale Trade Area | Edina, MN




TRANSWESTERN
REAL ESTATE
SERVICES



FOR MORE INFO CONTACT:
Janet Olson | 612.359.1681 | janet.olson@transwestern.com

Member of:
 REALTY
RESOURCES

SITE INFORMATION



LOCATION

6801-6821 York Avenue South
Edina, MN



SPACE AVAILABLE

6807C 3,612 sf
6815 2,162 sf



ESTIMATED OPEX (2024)

CAM/Ins. \$4.05 psf
Taxes \$11.45 psf
Total \$15.50 psf



TRAFFIC COUNTS

York Avenue 20,348 vpd
66th Street 14,588 vpd

** Sources: ESRI 2022 est & MN Dept of Transportation 2019 Study avgs are per day total cars*



DEMOGRAPHICS

	1 Mile	3 Mile	5 Mile
Population	17,016	121,902	303,862
Daytime Pop.	25,510	159,704	368,671
Med. HH Income	\$58,747	\$76,562	\$70,943
Avg. HH Income	\$84,921	\$111,822	\$102,397



COMMENTS

Anchored by Cub Foods and located across from Southdale Center at a signalized intersection, Yorkdale Shoppes is a high traffic center perfect for both retailers and service providers. This center is strategically positioned in the heart of the Southdale trade area - one of the most in-demand retail markets in the Twin Cities. Pylon signage is available to qualified premises.

TENANTS

AREA TENANTS

FOR MORE INFO CONTACT:

Janet Olson | 612.359.1681 | janet.olson@transwestern.com

TRANSWESTERN

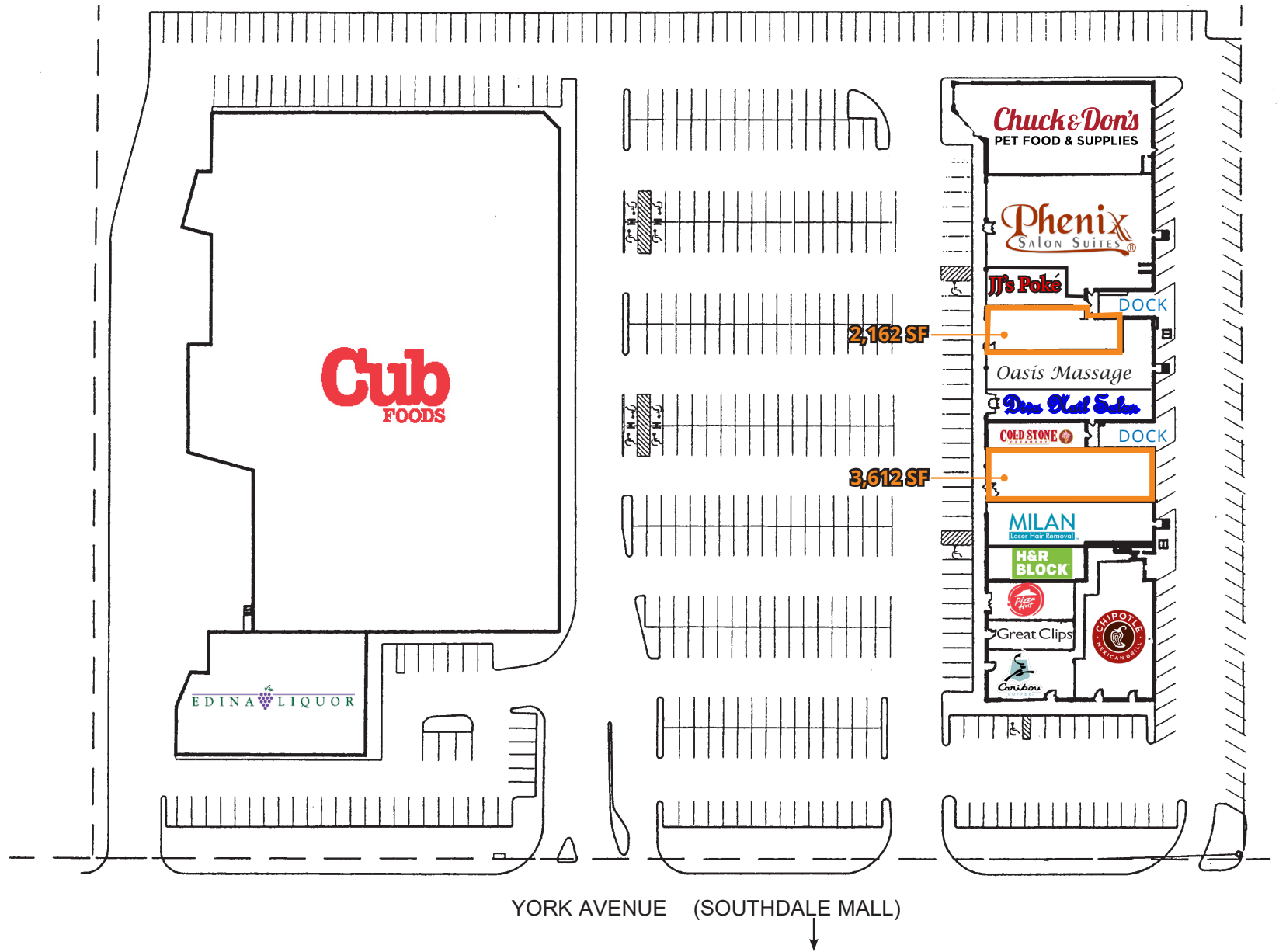
REALTY
RESOURCES
MEMBER

SOUTHDALE TRADE AREA AERIAL



FOR MORE INFO CONTACT:
 Janet Olson | 612.359.1681 | janet.olson@transwestern.com

BUILDING PLAN



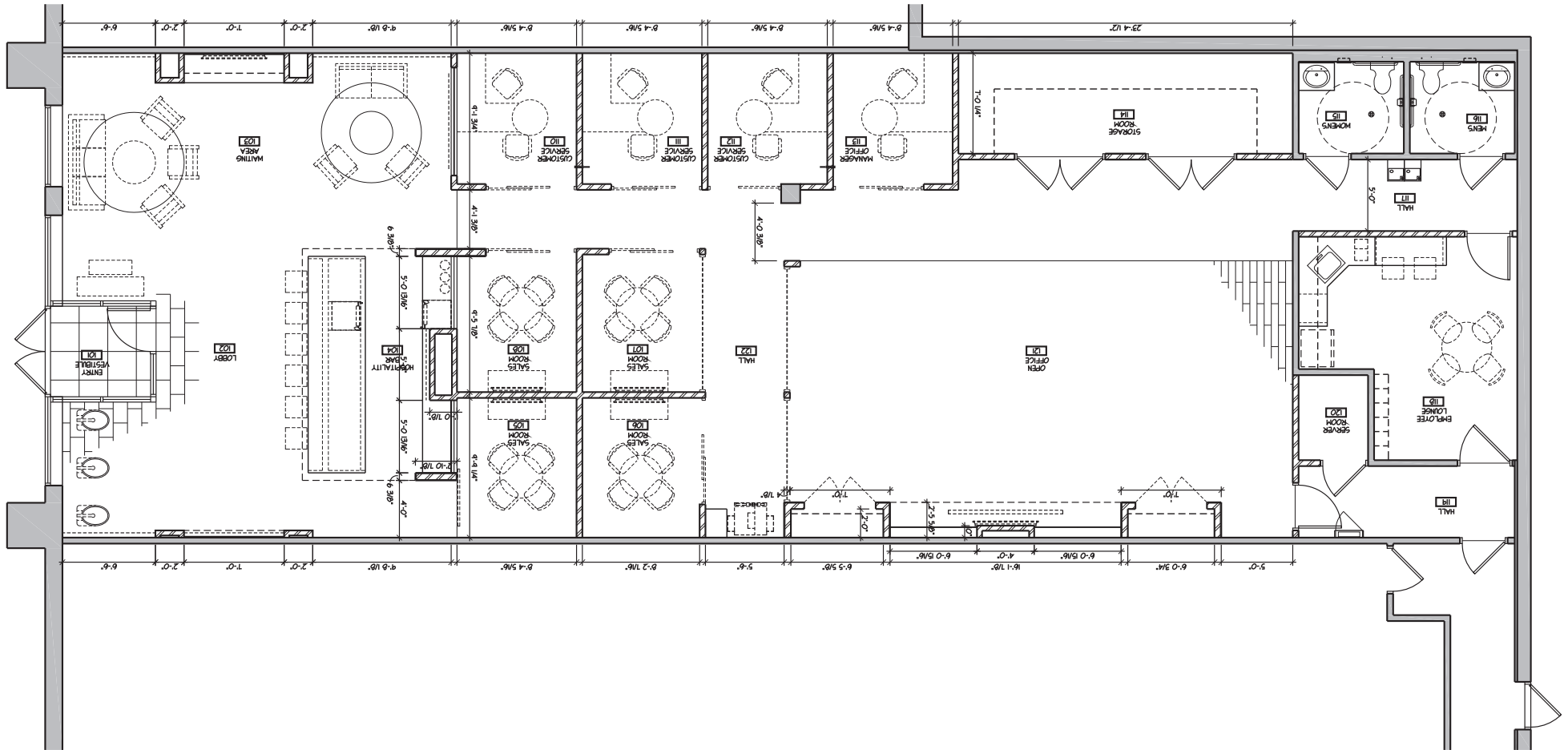
FOR MORE INFO CONTACT:

Janet Olson | 612.359.1681 | janet.olson@transwestern.com

 TRANSWESTERN

 REALTY
RESOURCES
MEMBER

SITE PLAN - 3,612 SF



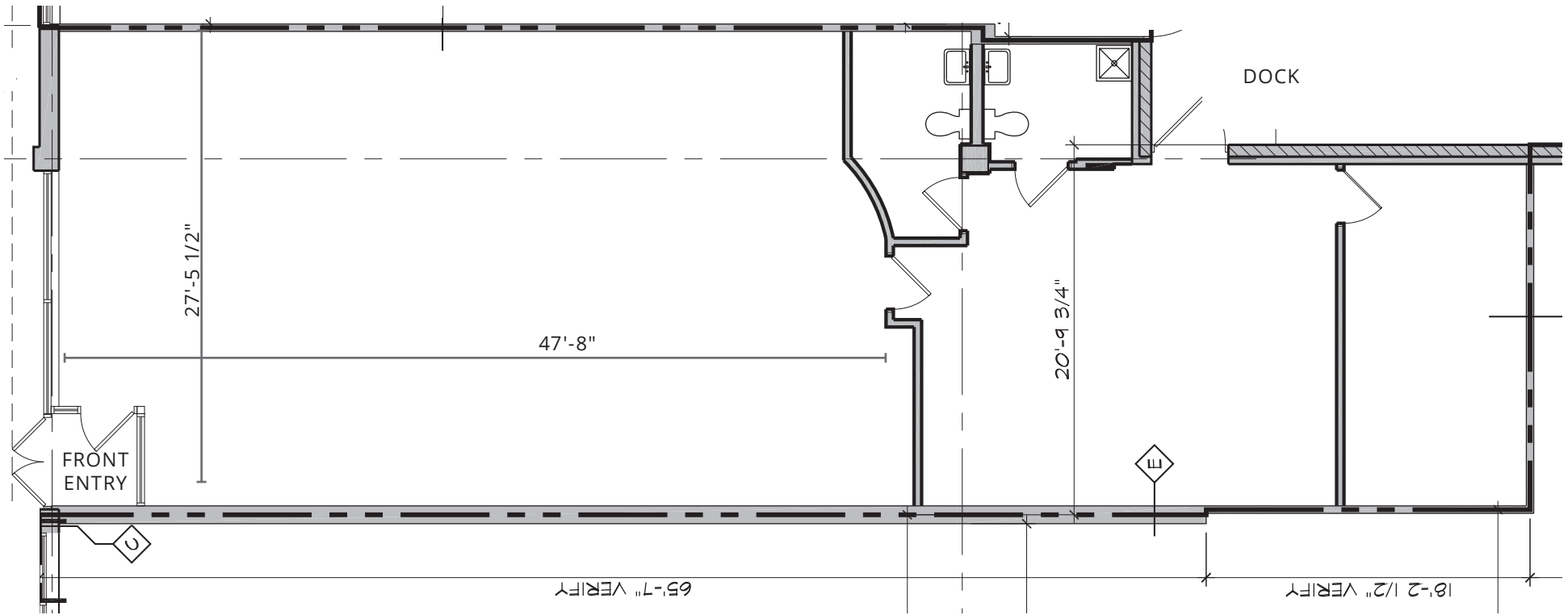
FOR MORE INFO CONTACT:

Janet Olson | 612.359.1681 | janet.olson@transwestern.com

 TRANSWESTERN

 REALTY
RESOURCES
MEMBER

SITE PLAN - 2,162 SF



FOR MORE INFO CONTACT:

Janet Olson | 612.359.1681 | janet.olson@transwestern.com

 TRANSWESTERN

 REALTY
RESOURCES
MEMBER