



TRANSWESTERN

REAL ESTATE
SERVICES



MEDICAL/OFFICE BUILDING

PLYMOUTH PROFESSIONAL I

PROPERTY OVERVIEW

BUILDING INFORMATION

- × **Location:** 9750 Rockford Road
Plymouth, MN 55442
- × **Building Size:** 15,144 SF
- × **# of Floors:** 1
- × **Year Built:** 1993
- × **Parking:** 79 spaces

AVAILABILITY

- × Suite 400 | 2,457 SF

HIGHLIGHTS

- × Building exterior and pylon signage available
- × Great freeway exposure + easy access to Rockford Rd & Hw 169
- × Located on highly visible corner
- × Medical/Office building with ample surface parking

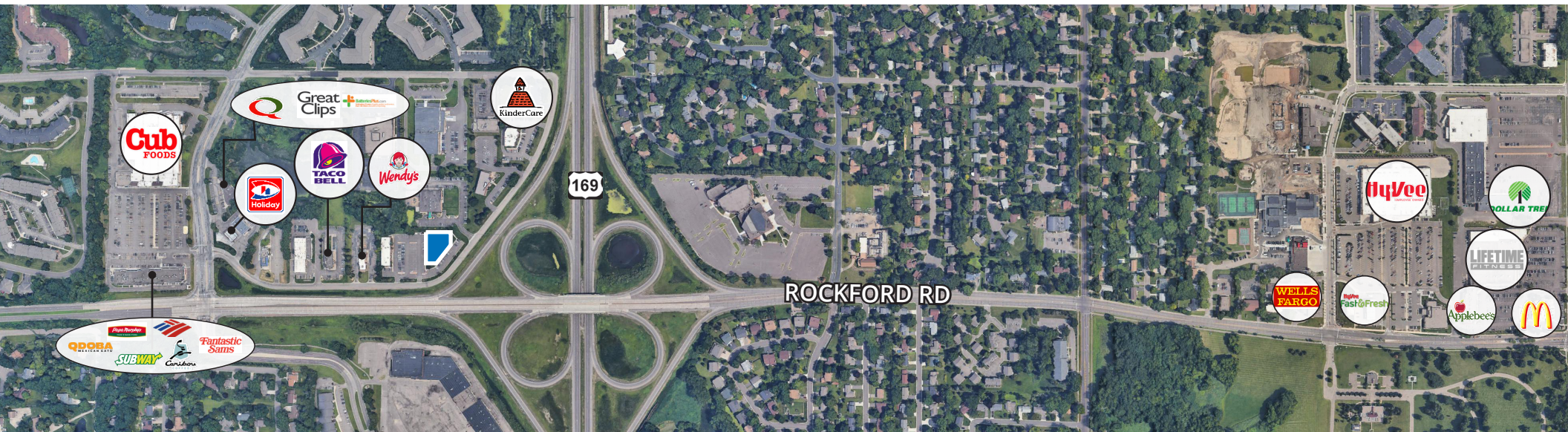
ASKING RATES

- × \$16.00 PSF Net

2025 est. TAX + OPS

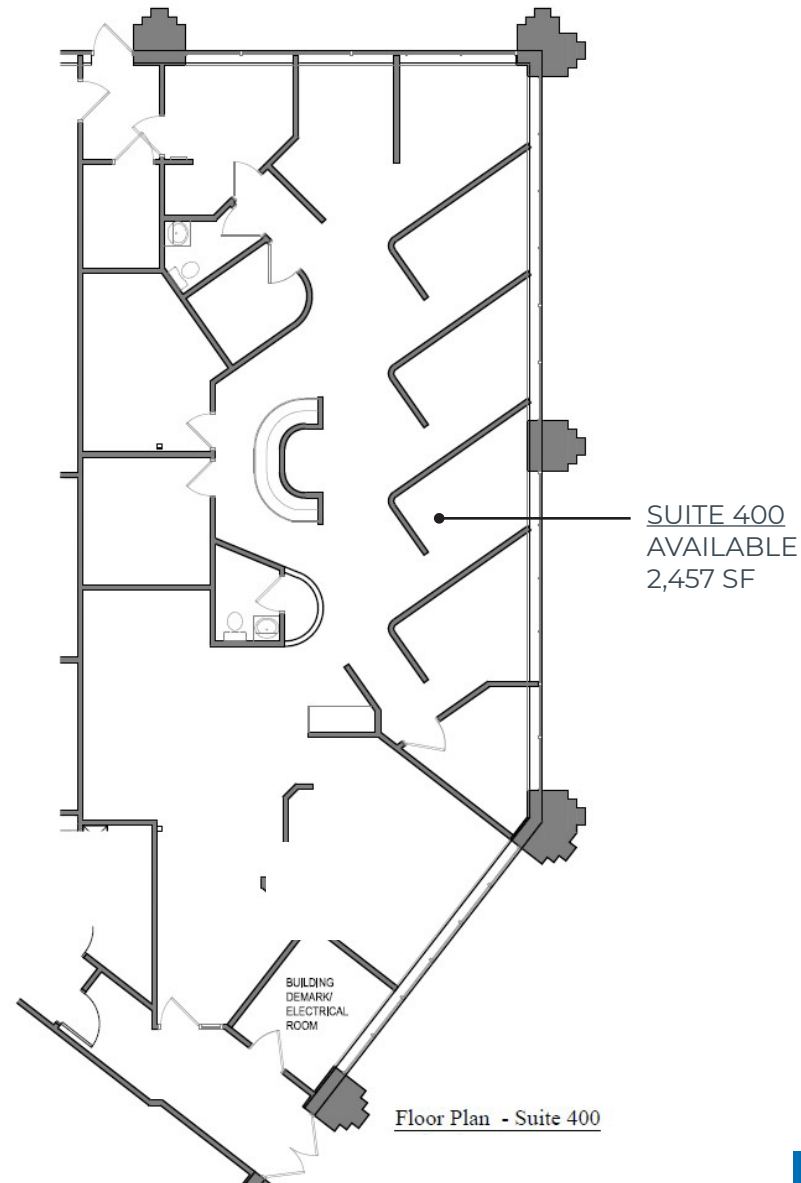
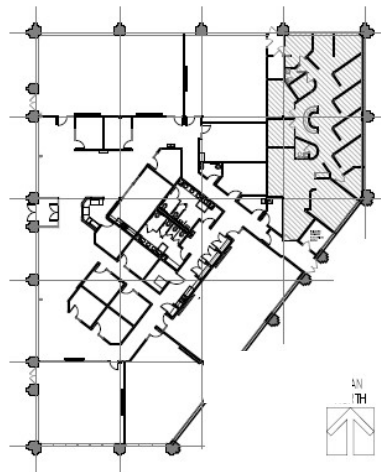
- × \$11.41 [\$4.68 psf Tax + \$6.73 psf Ops]

AREA AMENITIES



FLOOR PLAN

Building Location Key:



Floor Plan - Suite 400

CONTACT:

Bryan Beltrand | 612.359.1616 | bryan.beltrand@transwestern.com
Chad Anvary | 612.359.1642 | chad.anvary@transwestern.com



TRANSWESTERN

REAL ESTATE
SERVICES