

RETAIL SPACE FOR LEASE  
**YORKDALE SHOPPES**  
Southdale Trade Area | Edina, MN



  
TRANSWESTERN  
REAL ESTATE  
SERVICES



FOR MORE INFO CONTACT:  
Janet Olson | 612.359.1681 | [janet.olson@transwestern.com](mailto:janet.olson@transwestern.com)

Member of:  
 REALTY  
RESOURCES

# SITE INFORMATION



## LOCATION

6801-6821 York Avenue South  
Edina, MN



## SPACE AVAILABLE

6807C 3,612 sf  
6815 2,162 sf



## EST. CAM + TAX (2025)

CAM/Ins. \$4.90 psf  
Taxes \$10.84 psf  
Total \$15.74 psf



## TRAFFIC COUNTS

York Avenue 20,348 vpd  
66th Street 14,588 vpd

*\* Sources: ESRI 2022 est & MN Dept of Transportation 2019 Study avgs are per day total cars*



## DEMOGRAPHICS

	1 Mile	3 Mile	5 Mile
Population	17,016	121,902	303,862
Daytime Pop.	25,510	159,704	368,671
Med. HH Income	\$58,747	\$76,562	\$70,943
Avg. HH Income	\$84,921	\$111,822	\$102,397



## COMMENTS

Anchored by Cub Foods and located across from Southdale Center at a signalized intersection, Yorkdale Shoppes is a high traffic center perfect for both retailers and service providers. This center is strategically positioned in the heart of the Southdale trade area - one of the most in-demand retail markets in the Twin Cities. Pylon signage is available to qualified premises.

### TENANTS

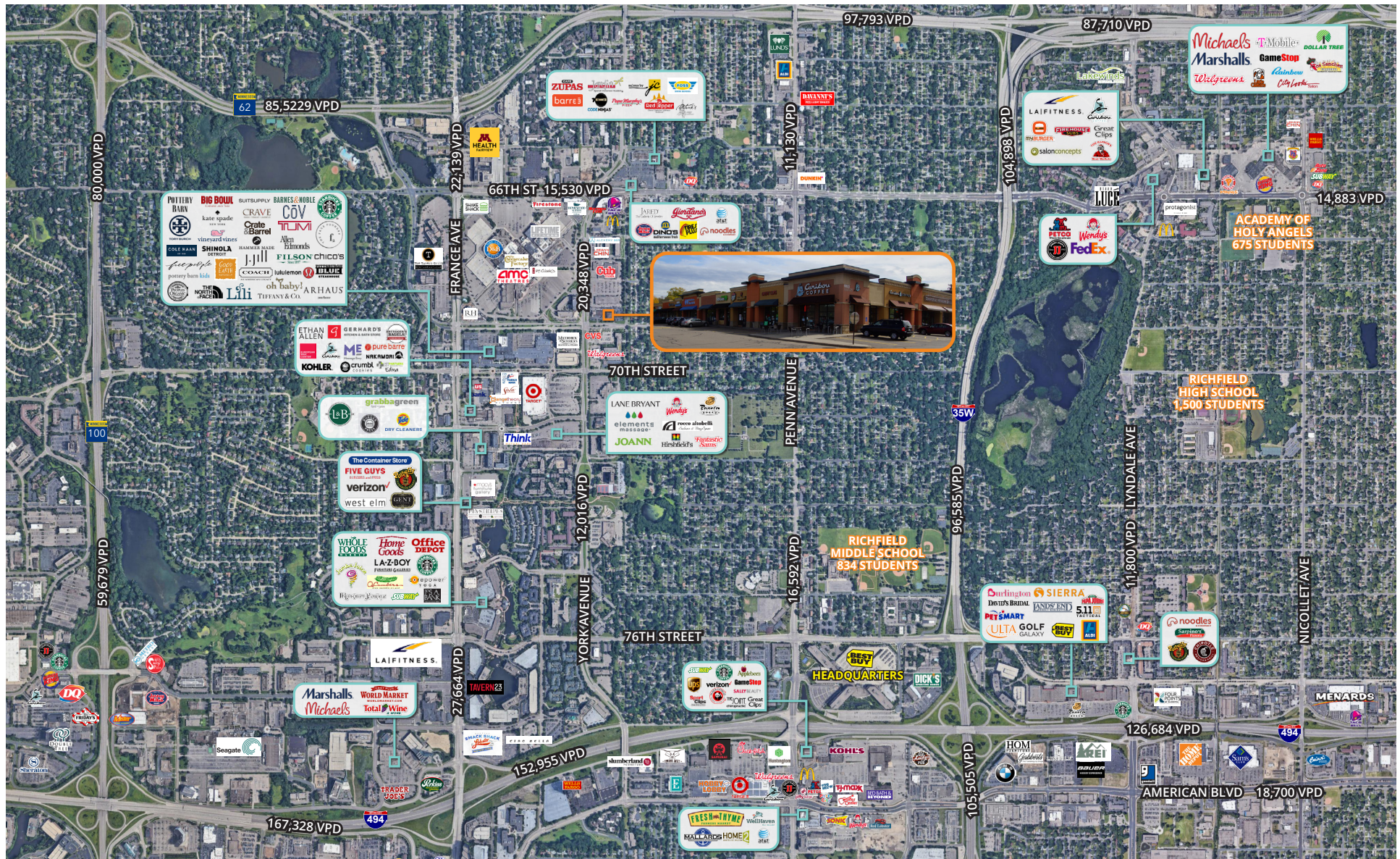
### AREA TENANTS

FOR MORE INFO CONTACT:

Janet Olson | 612.359.1681 | janet.olson@transwestern.com

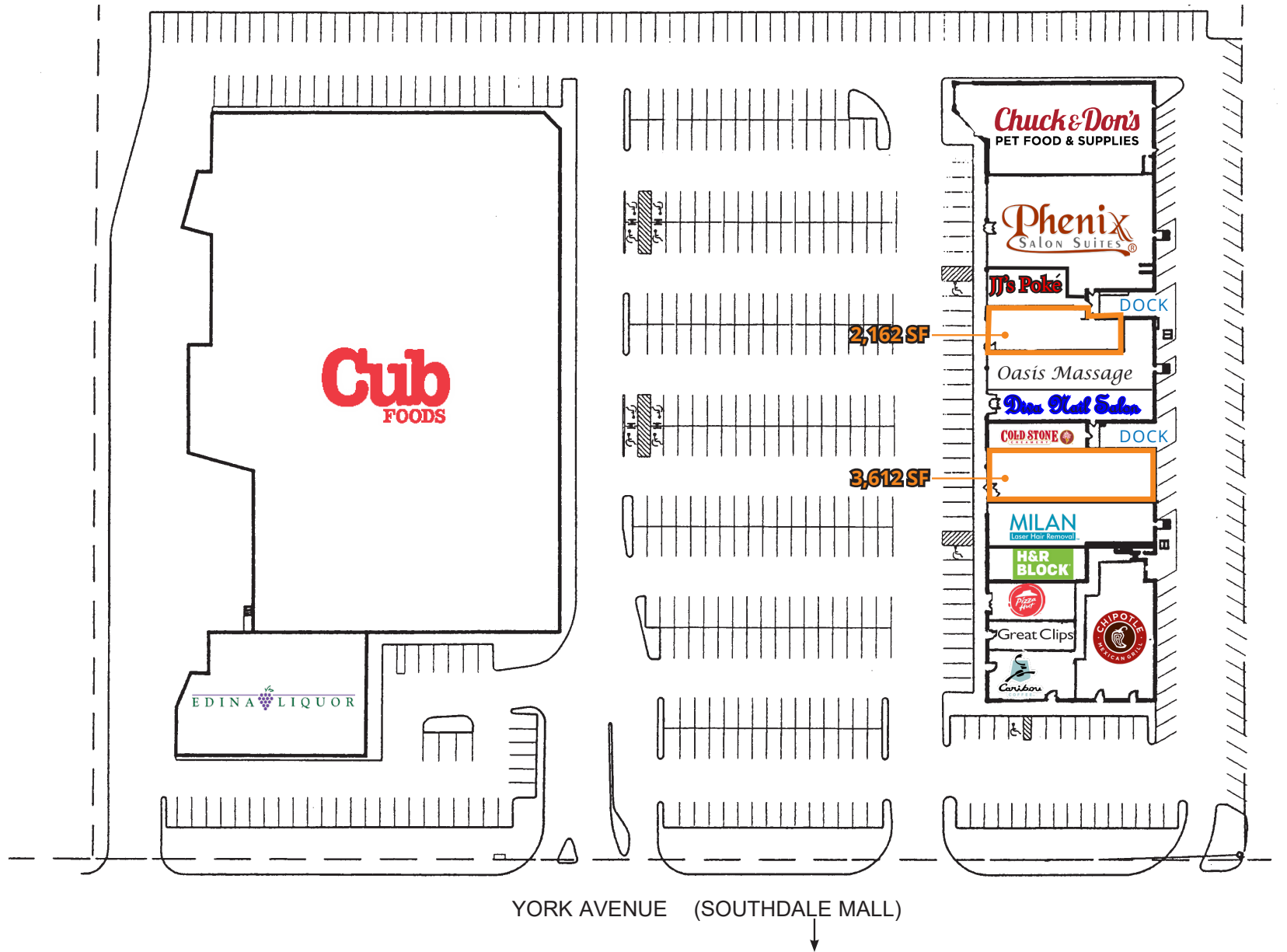


# SOUTHDALE TRADE AREA AERIAL



FOR MORE INFO CONTACT:  
Janet Olson | 612.359.1681 | janet.olson@transwestern.com

# BUILDING PLAN



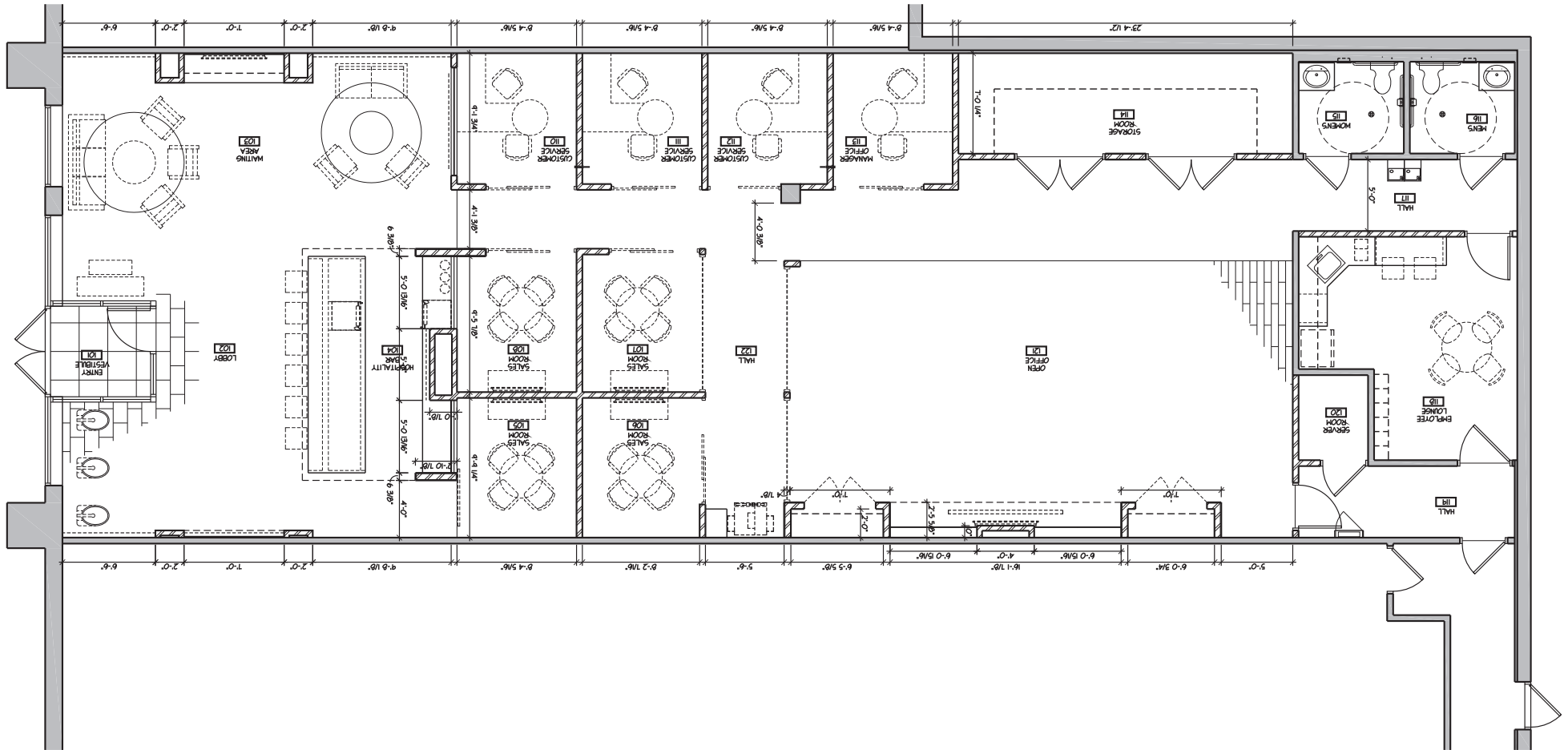
FOR MORE INFO CONTACT:

Janet Olson | 612.359.1681 | janet.olson@transwestern.com

 TRANSWESTERN

 REALTY  
RESOURCES  
MEMBER

# SITE PLAN - 3,612 SF



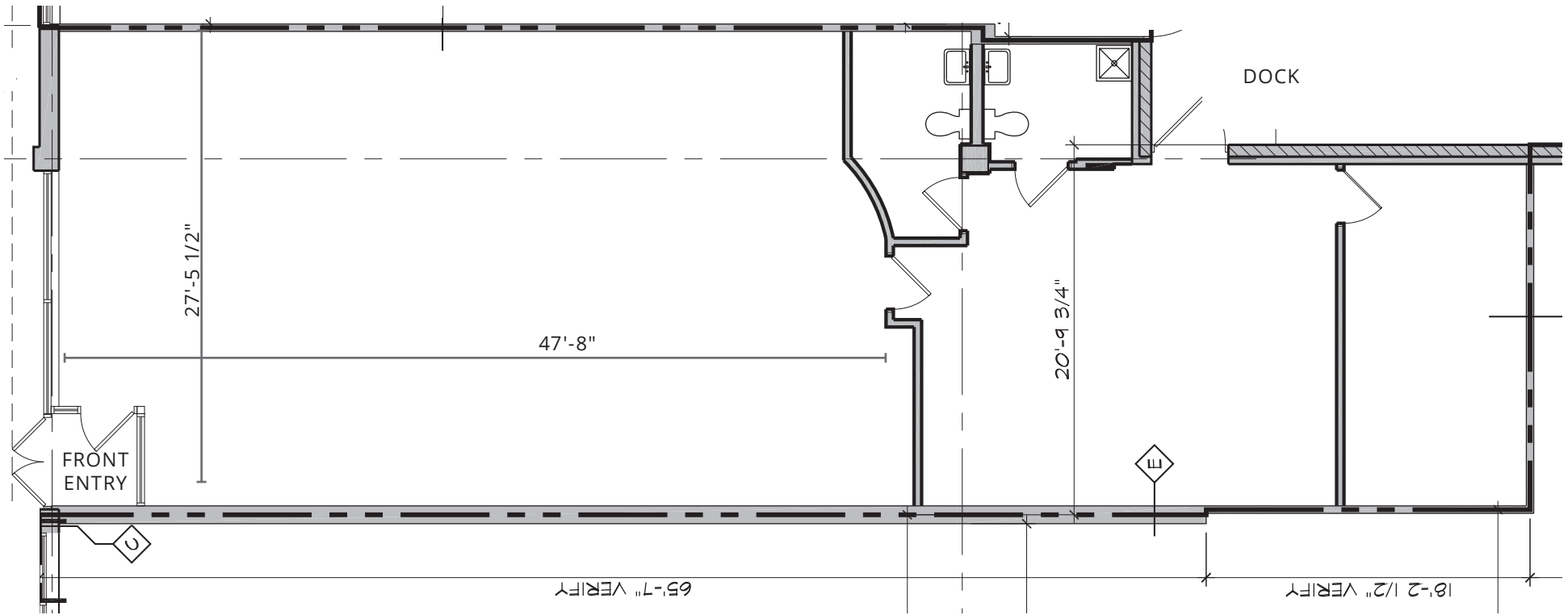
FOR MORE INFO CONTACT:

Janet Olson | 612.359.1681 | janet.olson@transwestern.com

 TRANSWESTERN

 REALTY  
RESOURCES  
MEMBER

# SITE PLAN - 2,162 SF



FOR MORE INFO CONTACT:

Janet Olson | 612.359.1681 | janet.olson@transwestern.com

 TRANSWESTERN

 REALTY  
RESOURCES  
MEMBER