



VELWOOD

 TRANSWESTERN

[illegible]

Velwood is located in the vibrant lifestyle neighborhood of 50th + France. This first-ring suburb boasts high quality of life and is known for it's high-end shopping, dining and recreation experiences. Whether you are up-and-coming or looking for a flagship store – this is the area everyone wants to be seen.



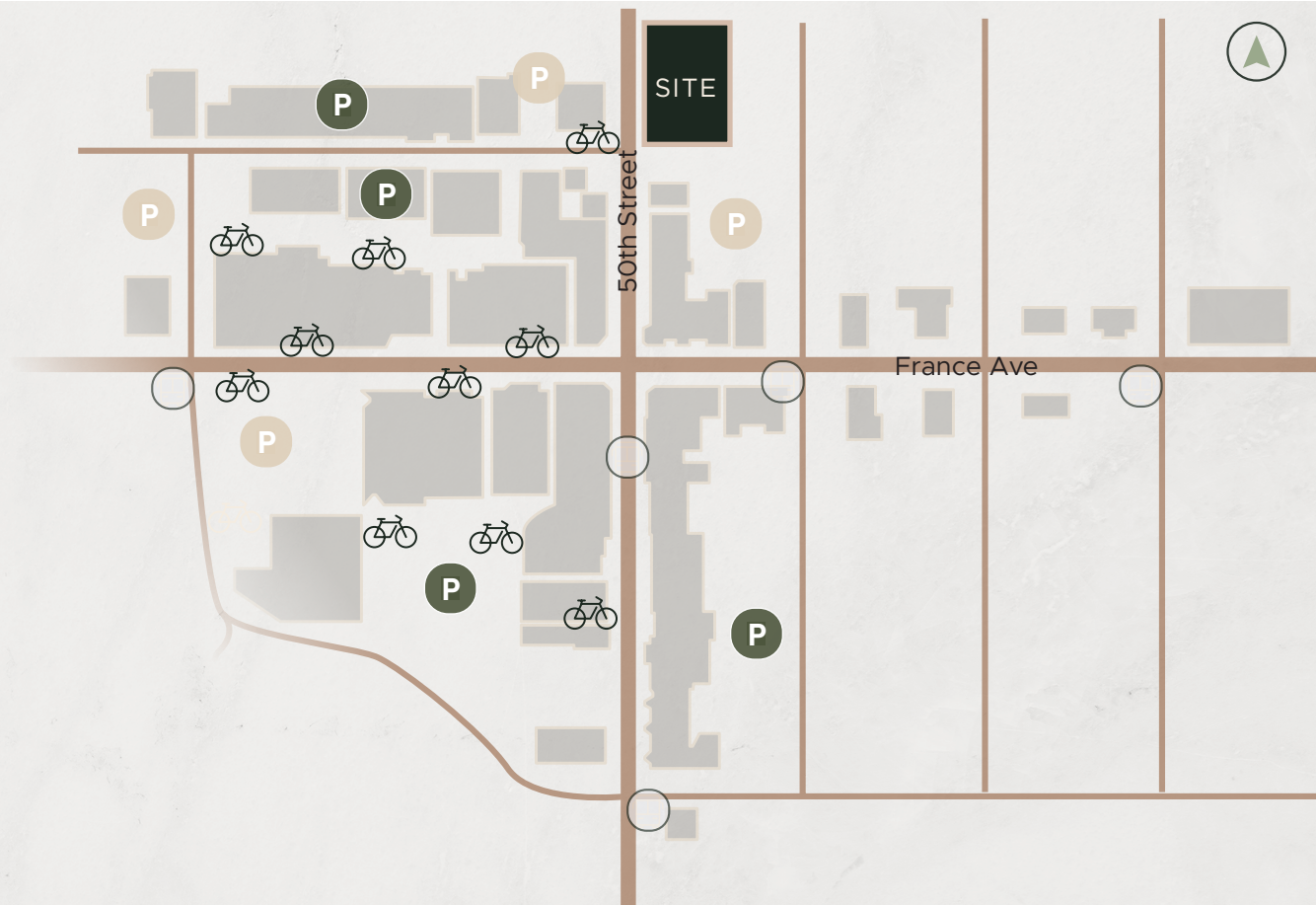
PUBLIC PARKING AREAS

P public ramp/lot parking

P patron parking

○ bus stop

🚲 bike parking



PREMIER OPPORTUNITY

LOCATION

4901-4923 France Ave South | Edina, MN

BUILDING

102,180 sq. ft. | 5 stories + 47 residential units

RETAIL SPACE

7,719 total sq. ft. commercial space [dividable]

PARKING

public + patron parking lots/ramps

This quintessential 5-story building is made up of 47 units featuring a high-quality construction and upscale finishes package, attractive building amenities and offers direct access to the 50th & France neighborhood with a plethora of high-end shops and popular restaurants.

France 50 is classified as a “walker’s paradise,” with a walk score of 91/100, convenient transit and bikeability.





AVAILABILITY

SUITE A
3,719 sq. ft.

SUITE B
1,798 sq. ft.

CLIENTELE

1 mile radius | 2021 ESRI est.



population
18,704



med hh income
\$152,250



med age
43.1

household spending



groceries
\$11,272



dining
\$8,171

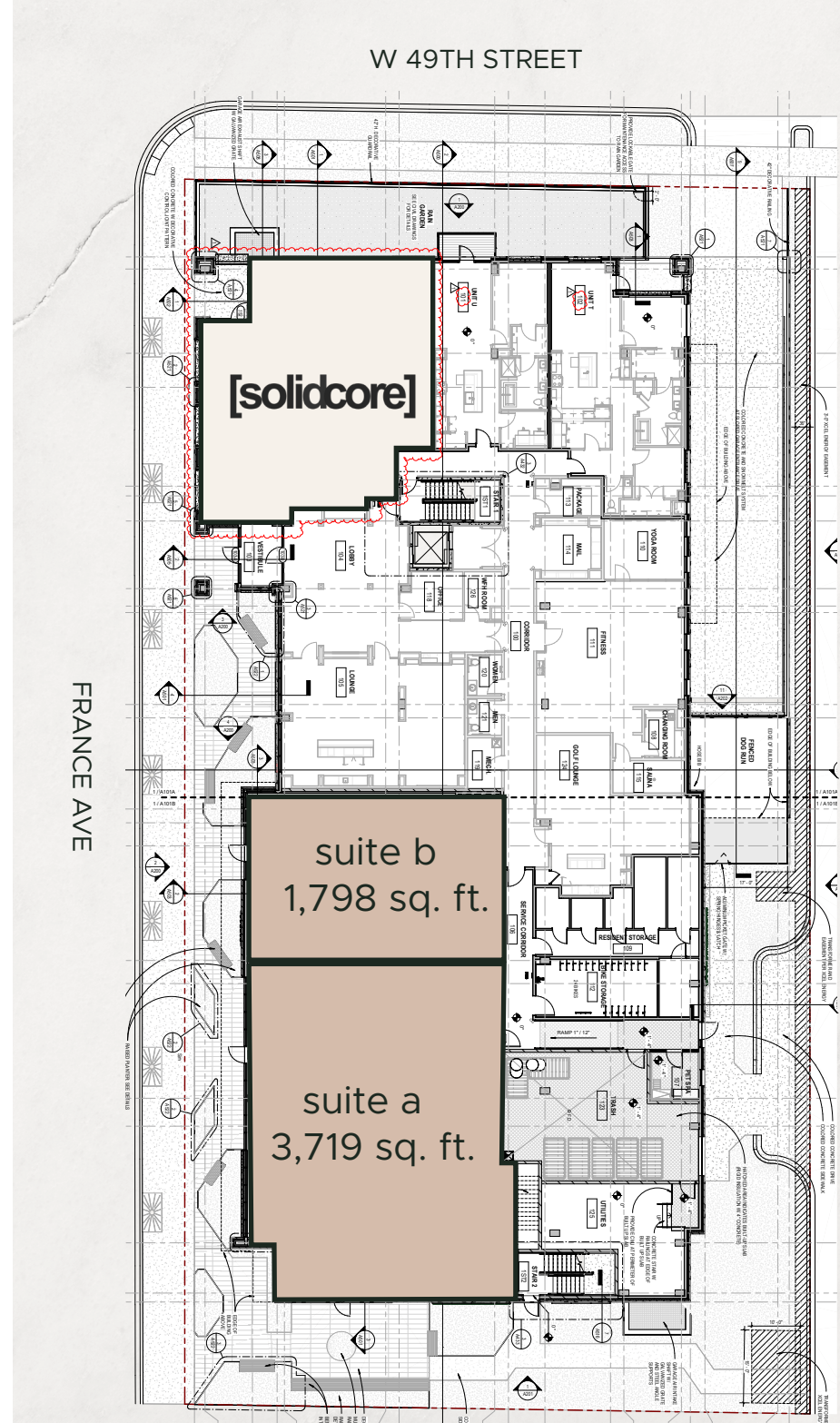


recreation
\$7,055



apparel
\$4,541

CONTACT: TONY STRAUSS | 612.359.1694



VELWOOD



Contact: TONY STRAUSS | 612.359.1694

 **TRANSWESTERN**