

MINNETONKA | OFFICE SPACE FOR LEASE

WHITEWATER PLAZA



12400

CHAD ANVARY | 612.359.1642
BRYAN BELTRAND | 612.359.1616



TRANSWESTERN REAL ESTATE SERVICES

PROPERTY OVERVIEW

Whitewater Plaza



TRANSWESTERN

REAL ESTATE
SERVICES



PROPERTY DETAILS

Address:	12400 Whitewater Drive Minnetonka, MN 55343
Size:	60,000 SF
Year Built:	1984



AVAILABILITY

Suite 110 | 7,502 RSF

Suite 2010 | 11,111 RSF*

Suite 2030 | 7,458 RSF*

*can be combined to 18,569 RSF

Asking Net Rent: \$13.00 PSF

CAM & Taxes: \$10.15 PSF (2024 est.)



HIGHLIGHTS

Class A finishes with first floor access and numerous windows

Will retrofit suite

Abundant parking (4:1,000)

Good access near I-494 and Crosstown (Hwy 62)



LEASING INFORMATION:

Chad Anvary | 612.359.1642 | chad.anvary@transwestern.com

Bryan Beltrand | 612.359.1616 | bryan.beltrand@transwestern.com

The information provided herein was obtained from sources believed reliable; however, Transwestern makes no guarantees, warranties or representations as to the completeness of accuracy thereof. The presentation of this property is submitted subject to errors, omissions, change of price or conditions, prior to sale or lease, or withdrawal without notice. Copyright © 2023 Transwestern.

FLOOR PLAN

Whitewater Plaza


TRANSWESTERN

REAL ESTATE
SERVICES

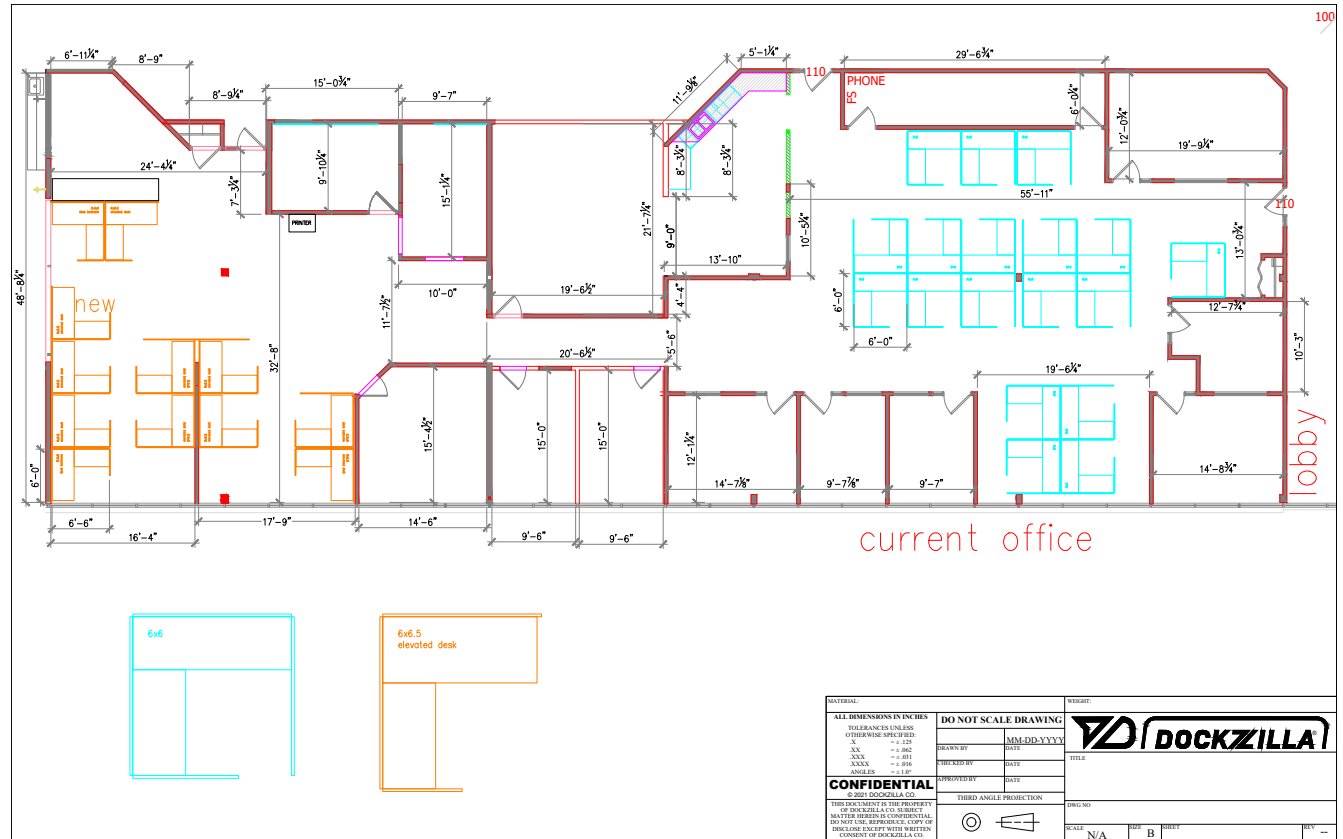


SUITE 110
7,502 RSF

LEASING INFORMATION:

Chad Anvary | 612.359.1642
chad.anvary@transwestern.com

Bryan Beltrand | 612.359.1616
bryan.beltrand@transwestern.com



FLOOR PLAN

Whitewater Plaza



SUITE 2010
11,111 RSF

LEASING INFORMATION:

Chad Anvary | 612.359.1642
chad.anvary@transwestern.com

Bryan Beltrand | 612.359.1616
bryan.beltrand@transwestern.com



FLOOR PLAN

Whitewater Plaza



TRANSWESTERN

REAL ESTATE
SERVICES

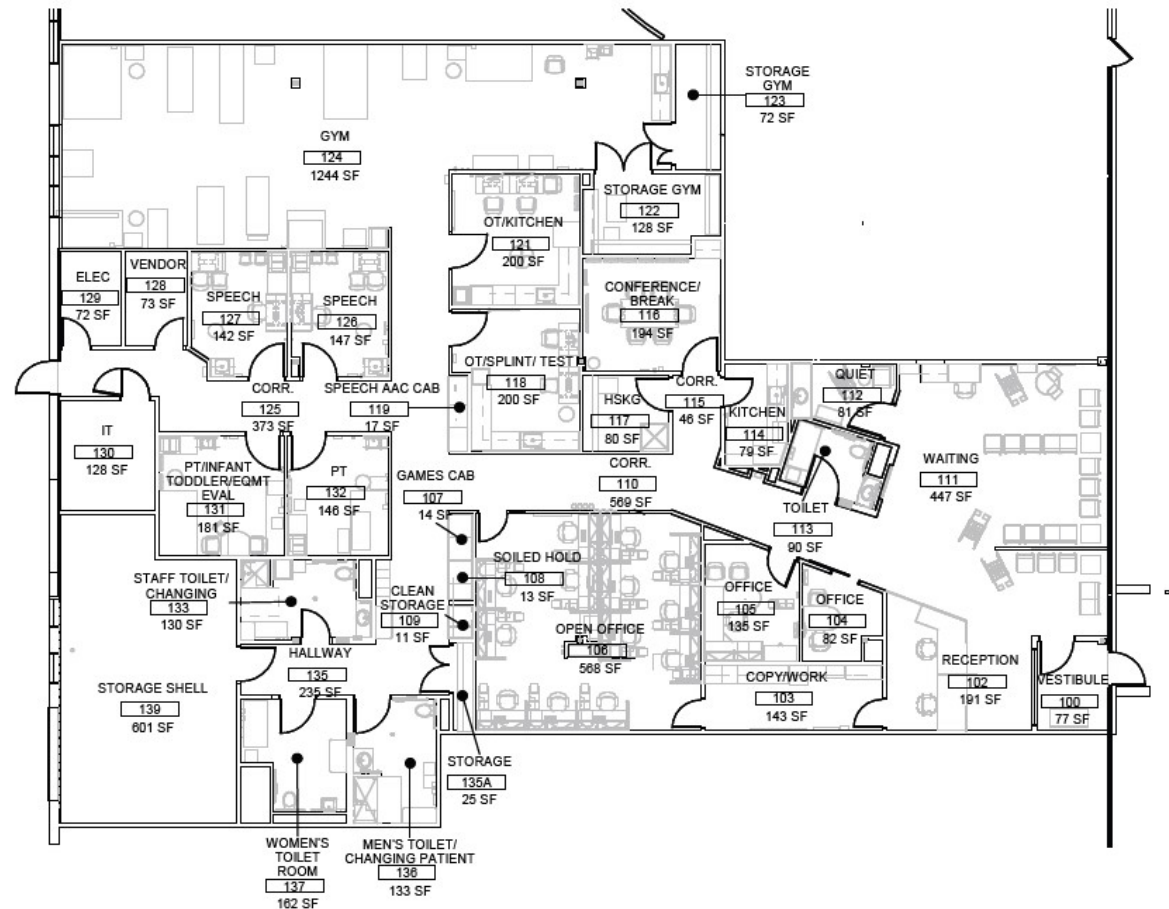


SUITE 2030
7,458 RSF

LEASING INFORMATION:

Chad Anvary | 612.359.1642
chad.anvary@transwestern.com

Bryan Beltrand | 612.359.1616
bryan.beltrand@transwestern.com



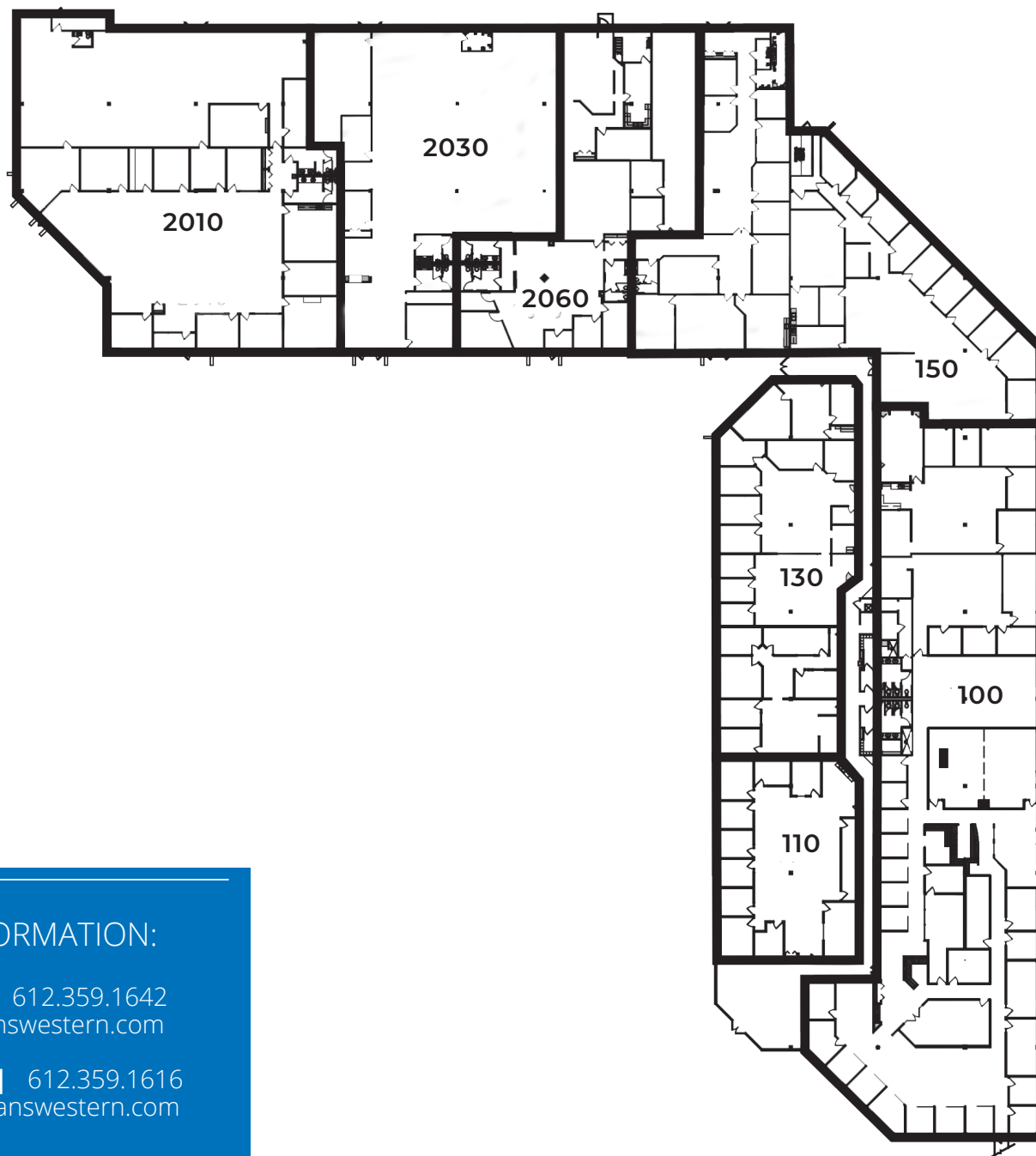
FLOOR PLAN

Whitewater Plaza



TRANSWESTERN

REAL ESTATE
SERVICES



LEASING INFORMATION:

Chad Anvary | 612.359.1642
chad.anvary@transwestern.com

Bryan Beltrand | 612.359.1616
bryan.beltrand@transwestern.com





TRANSWESTERN

REAL ESTATE
SERVICES



THINKING BEYOND THE OBVIOUS

CHAD ANVARY | 612.359.1642
chad.anvary@transwestern.com

BRYAN BELTRAND | 612.359.1616
bryan.beltrand@transwestern.com