



HAZELTINE CENTER

OFFICE SPACE FOR LEASE | CHASKA, MN

HAZELTINE CENTER OVERVIEW

PROPERTY DETAILS

ADDRESS:	1107 Hazeltine Blvd Chaska, MN
BUILDING SF:	105,274 sq. ft.
# OF FLOORS:	5
CEILING HEIGHT:	9'
PARKING:	Ample surface spaces + underground parking available
LIGHTING:	Parabolic
HEATING/AC:	Forced Air
RESTROOMS:	One set (men's/women's per floor)

AVAILABILITY

FOR LEASE:	234 - 2,081 sq. ft.
NET RENT:	\$11.00 - \$13.00 psf
CAM + TAX:	\$10.95 psf Total (2024 est.)
INDIV. OFFICES:	Starting at \$32.00-\$34.00 psf Gross

HIGHLIGHTS

- Fantastic western Eden Prairie location, just south of Hwy 5
- Building amenities include: conference room with high-speed Internet and outdoor patio seating
- Ample visitor and employee parking with underground parking option
- Easy access to Highways 5, 41 and 212
- Walk to Hazeltine National Golf Club
- Close proximity to Two Twelve Medical Center
- On-site building ownership, management and maintenance
- World HQ for The Goodman Group (2nd floor)
- Nearby retail includes: Starbucks, Chipotle, McDonald's, Kohl's, Aldi and Park Dental



CONTACT

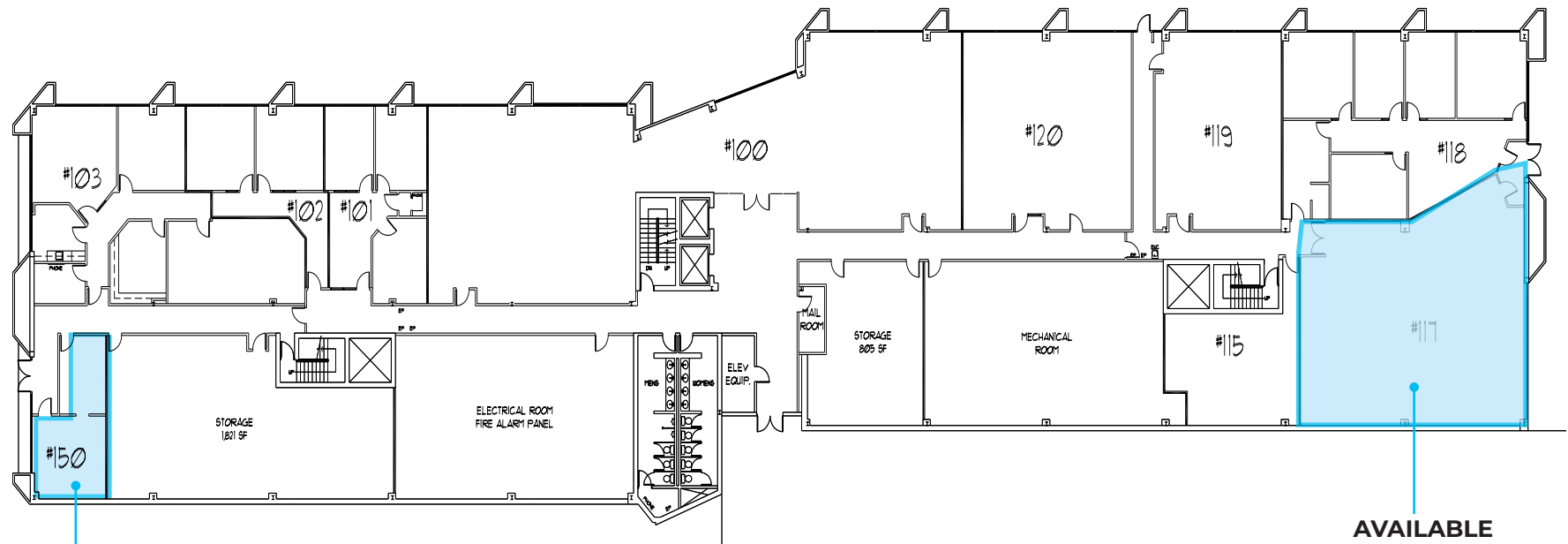
CHAD ANVARY | 612 359 1672 | chad.anvary@transwestern.com

HAZELTINE CENTER 1ST FLOOR PLAN

AVAILABILITY

SUITE 117 2,081 sq. ft.

SUITE 150 504 sq. ft.



AVAILABLE
#150
504 SF

AVAILABLE
#117
2,081 SF

CONTACT

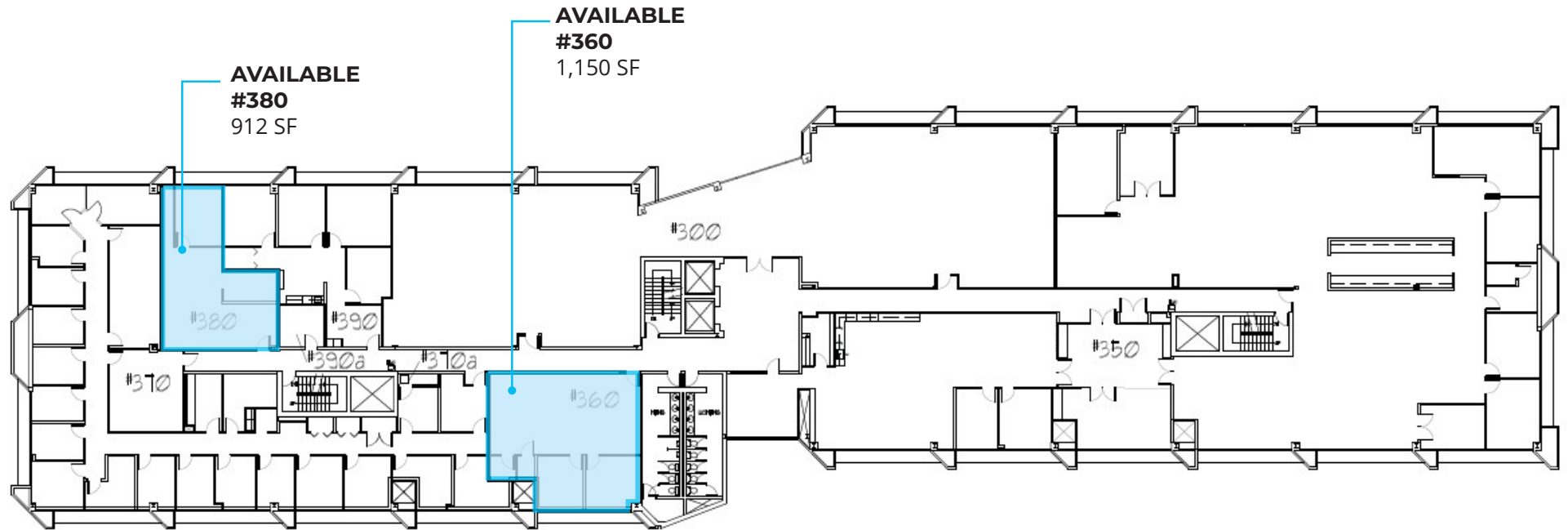
CHAD ANVARY | 612 359 1672 | chad.anvary@transwestern.com

HAZELTINE CENTER 3RD FLOOR PLAN

AVAILABILITY

SUITE 360 1,150 sq. ft.

SUITE 380 912 sq. ft.



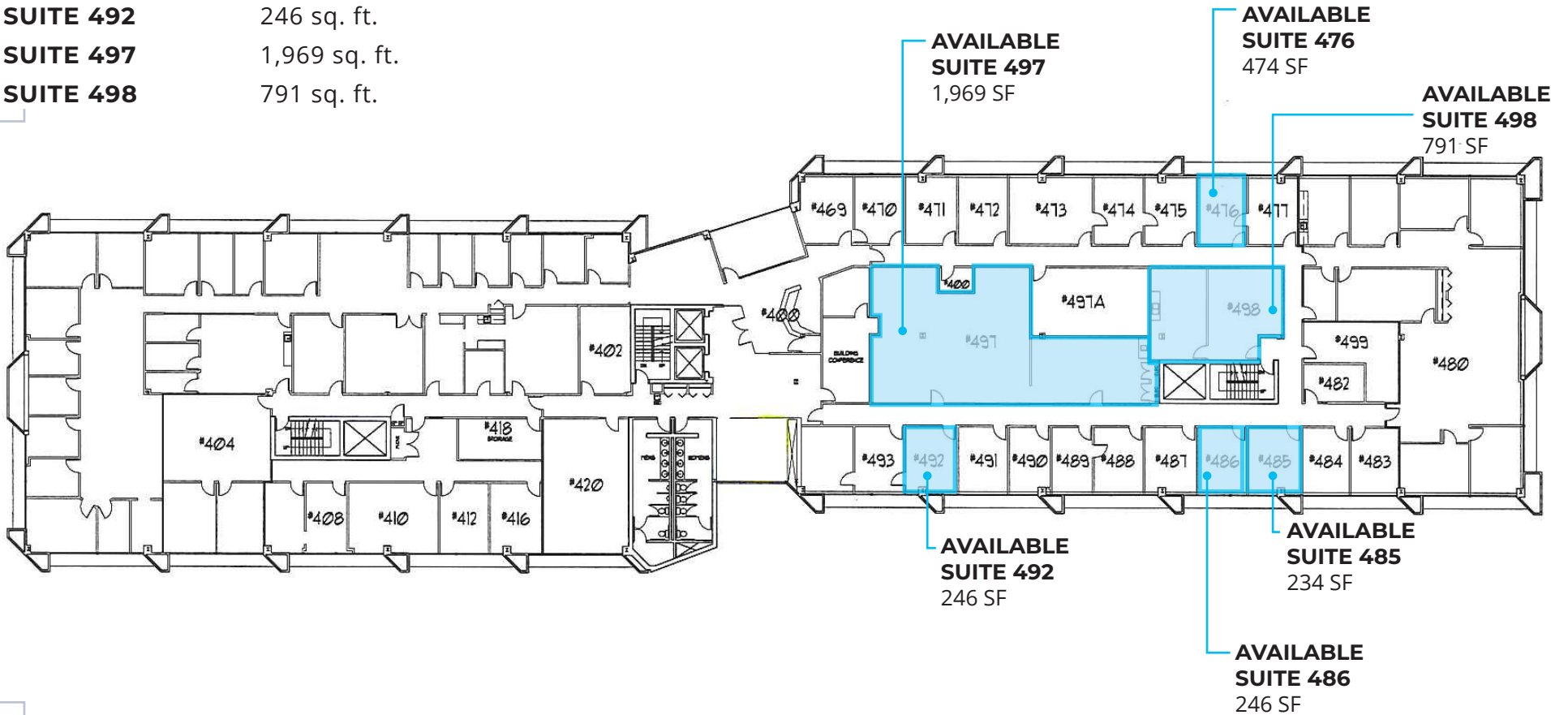
CONTACT

CHAD ANVARY | 612 359 1672 | chad.anvary@transwestern.com

HAZELTINE CENTER 4TH FLOOR PLAN

AVAILABILITY

SUITE 476	474 sq. ft.
SUITE 485	234 sq. ft.
SUITE 486	246 sq. ft.
SUITE 492	246 sq. ft.
SUITE 497	1,969 sq. ft.
SUITE 498	791 sq. ft.



CONTACT

CHAD ANVARY | 612 359 1672 | chad.anvary@transwestern.com