



ELEVEN

MINNEAPOLIS

4,609 SF RESTAURANT OPPORTUNITY



An aerial photograph of Minneapolis, Minnesota, showing the city skyline with various skyscrapers and the Mississippi River. In the foreground, Gold Medal Park is visible with its green fields and winding paths. The image is used as a background for the left side of the advertisement.

Nestled in a prestigious historic district.

This stunning Residential Condominium Tower is nestled in the heart of the Mill District Neighborhood in Downtown Minneapolis. A true masterpiece of urban living, this world-class structure embodies the pinnacle of luxury in the city. Seamlessly integrated with Gold Medal Park, the Mississippi River, and the iconic Stone Arch Bridge, Eleven presents an unparalleled setting for dining perfection.

A blank canvas of 4,609 square-feet for master chefs to showcase their exquisite collections of distinguished culinary masterpieces, all within an environment that upholds the highest of expectations.

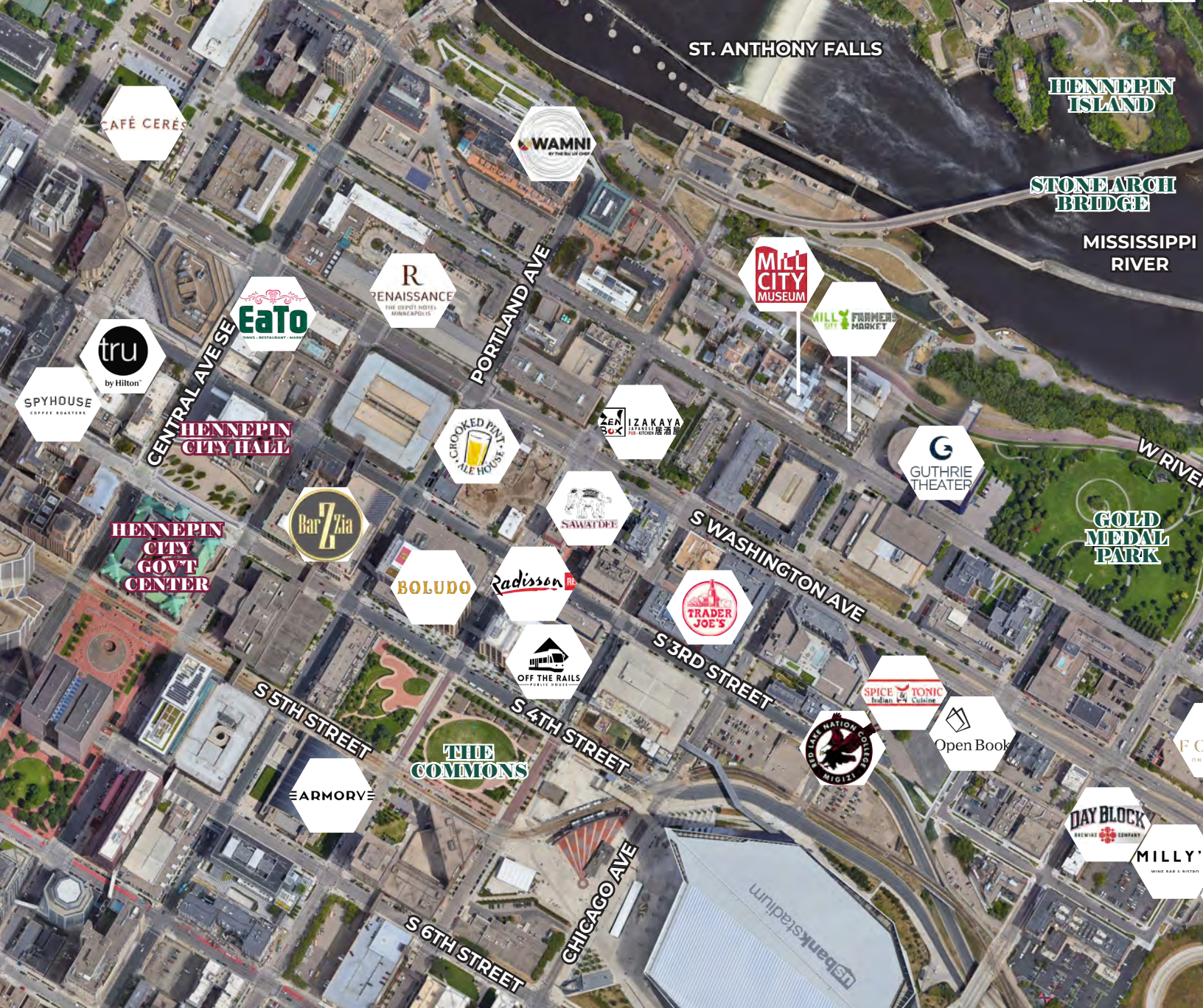
Ready to Embrace:

- » Full Glass exposure to the Mississippi River view
- » Walkability & Pathways to adjacent residences
- » Connectivity to Eleven Lobby
- » Dedicated, enclosed parking with valet opportunity
- » Outdoor patio fit for dining and special events
- » Clean Gray Shell Condition
- » Pathway in place for full cook capacity

ELEVEN is the best kept secret in elegance and sophistication.

Be exclusive.

| | |
|----------------------------|---|
| Location | 1111 River Parkway Minneapolis, MN |
| Neighborhood | Historic Mill City District |
| Residential Tower | 42-story 122 units |
| Built | 2022 |
| Restaurant Space Available | 4,609 square feet [click here for virtual tour] |



CLIENTELE

demographics

3 mile radius | 2024 ESRI



population
256,628



daytime
population
394,163



avg income
\$95,797



med age
31

Mill City Neighborhood



avg. household spending



dining out
\$3,623



entertainment +
recreation
\$3,366

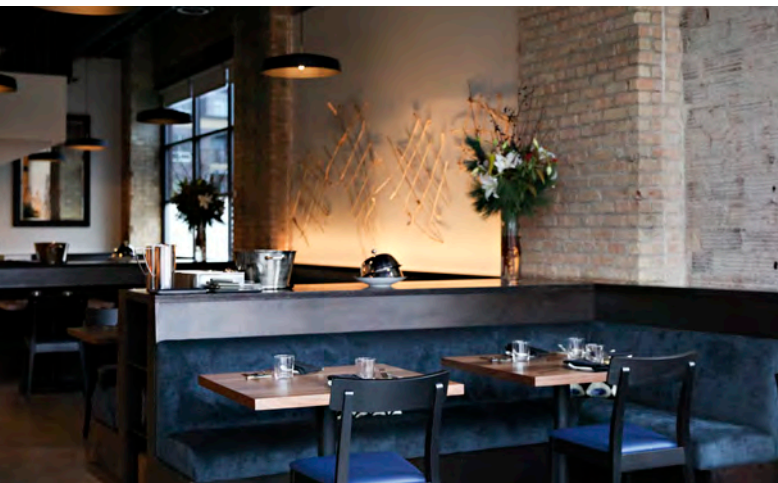


dining at home
\$6,545



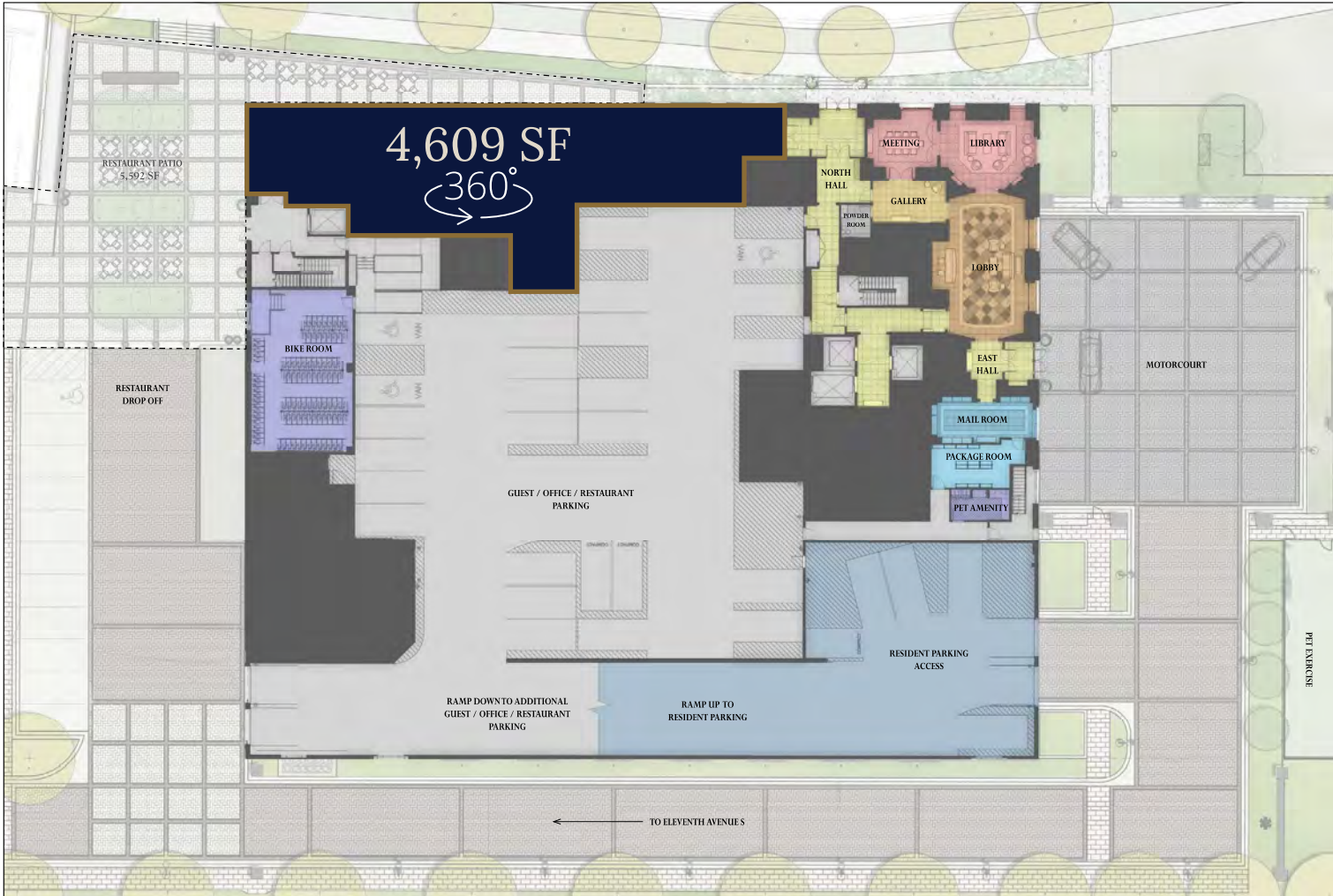
alcoholic
beverages
\$623

Exquisite Opportunity





Corey Gaffer © Gaffer Photography



ELEVEN

MINNEAPOLIS

BRAD KAPLAN

612 359 1625
BRAD.KAPLAN@TRANSWESTERN.COM

KRIS SCHISEL

612 359 1691
KRIS.SCHISEL@TRANSWESTERN.COM



TRANSWESTERN