

Lamplighter Square

SPACE AVAILABLE FOR LEASE

2700-2750 Douglas Drive North | New Hope, Minnesota 55422



LAMPLIGHTER SQUARE

Property Details

Lamplighter Square is a neighborhood retail center at the signalized intersection of Douglas Drive and Medicine Lake Road in New Hope, just minutes from Highway 100. The property benefits from strong visibility and steady traffic driven by the surrounding residential neighborhoods and nearby schools.

LOCATION

- 2700-2750 Douglas Drive North | New Hope, MN 55422

BUILDING SIZE

- 17,995 SF

AVAILABLE SPACE

- Suite 2704: 665 SF
- Suite 2748: 1,245 SF

2026 EST. OPERATING EXPENSES

- \$8.50 PSF Total

TRAFFIC COUNTS

- 7,980 VPD - Douglas Dr
- 6,380 VPD - Medicine Lake Rd



Demographics

RADIUS	1 MILE	3 MILE	5 MILE
POPULATION	10,451	103,383	318,914
MEDIAN HH INCOME	\$84,374	\$87,031	\$85,763
AVERAGE HH INCOME	\$108,306	\$116,212	\$117,302

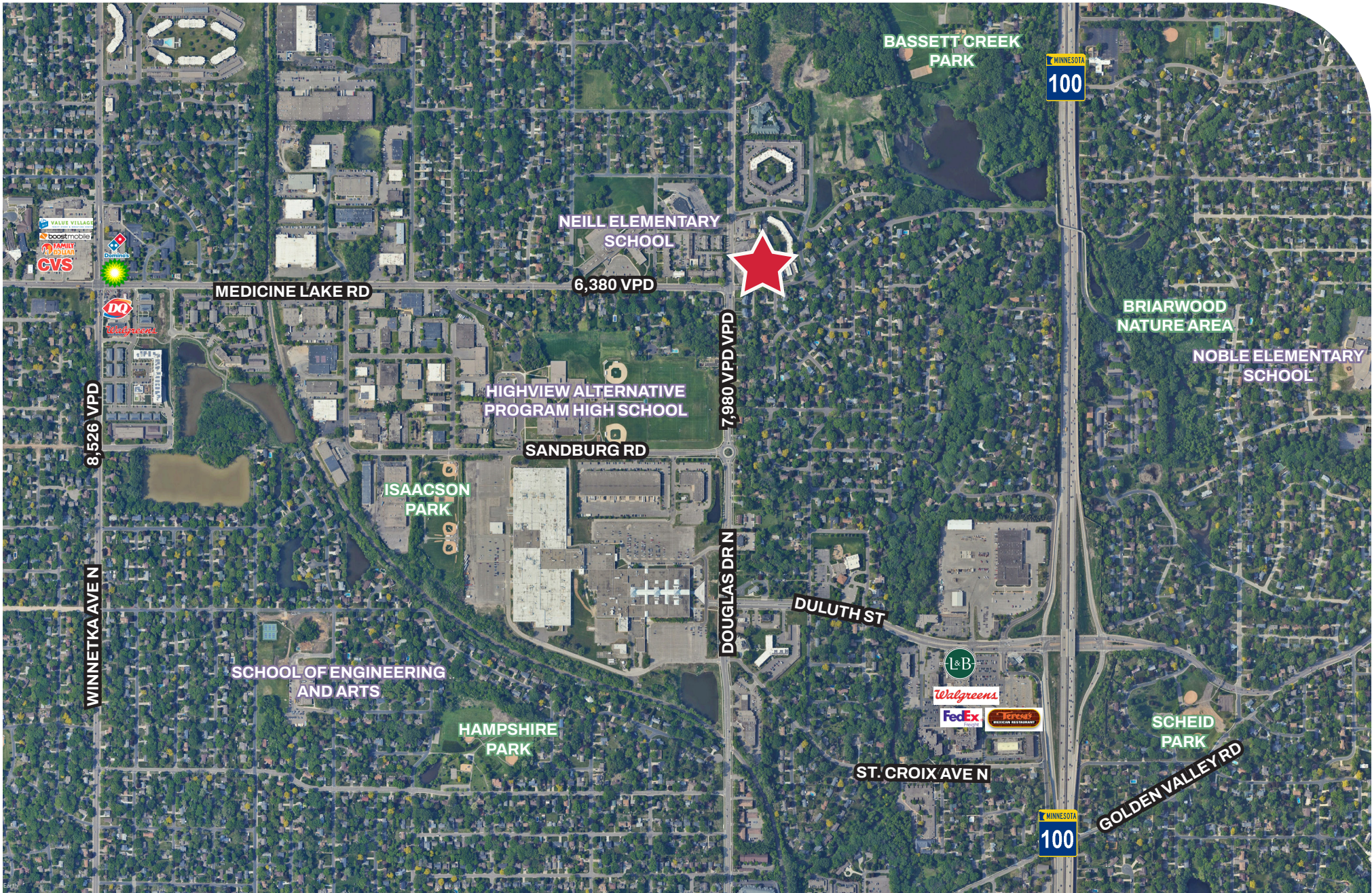
* Sources: ESRI 2025 est & MN Dept of Transportation 2025 Study avgs are per day total cars

 Transwestern

Molly Townsend

(612) 359-1693 | molly.townsend@transwestern.com

 REALTY
RESOURCES
MEMBER



T Transwestern
Molly Townsend

(612) 359-1693 | molly.townsend@transwestern.com

