

RETAIL FOR LEASE



**SAND CREEK FLATS RETAIL**  
201 EL DORADO DRIVE | JORDAN, MN



# SAND CREEK FLATS RETAIL OVERVIEW

**LOCATION:** 201 El Dorado Drive | Jordan, MN  
**LOT SIZE:** 2.84 AC  
**HIGHLIGHTS:** 5,200 sqft of retail or office space located within a Sand Creek Flats apartment building. The property is zoned C-3 and allows for a broad range of commercial uses.  
**PARKING:** 111  
**YEAR BUILT:** 2023

## FOR LEASE

**AVAILABLE:** 5,200 SF

## AREA RETAILERS



## CONTACT

BRAD KAPLAN | 612 359 1625 | [brad.kaplan@transwestern.com](mailto:brad.kaplan@transwestern.com)

## SITE PHOTOS



# SAND CREEK FLATS RETAIL SITE PLAN

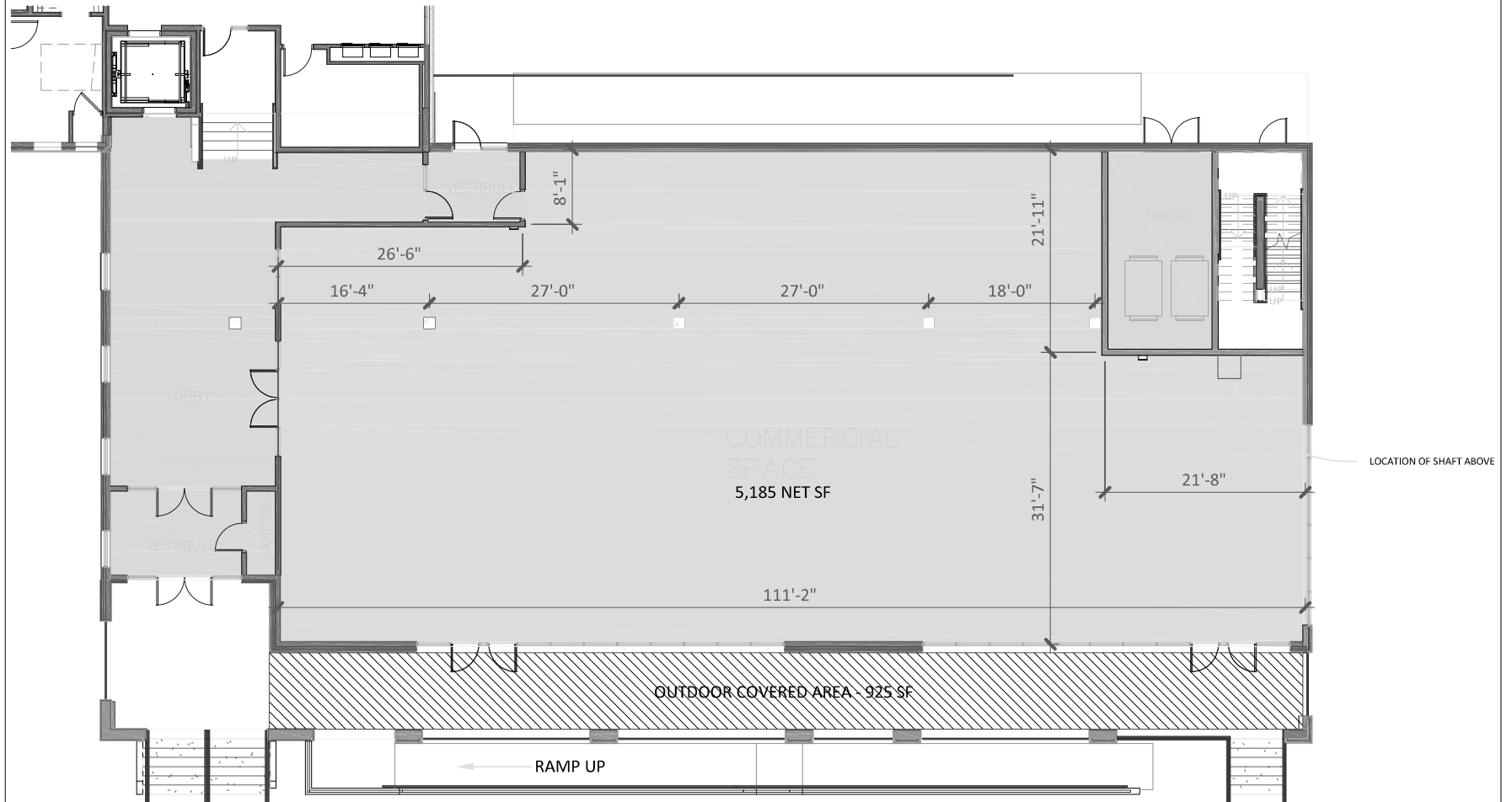


## CONTACT

BRAD KAPLAN | 612 359 1625 | [brad.kaplan@transwestern.com](mailto:brad.kaplan@transwestern.com)

The information provided herein was obtained from sources believed reliable; however, Transwestern makes no guarantees, warranties or representations as to the completeness or accuracy thereof. The presentation of this property is submitted subject to errors, omissions, change of price or conditions, prior sale or lease, or withdrawal without notice. Copyright © 2025 Transwestern.

# SAND CREEK FLATS RETAIL FLOOR PLAN



## CONTACT

BRAD KAPLAN | 612 359 1625 | [brad.kaplan@transwestern.com](mailto:brad.kaplan@transwestern.com)



# JORDAN TRADE AREA AERIAL



REALTY  
RESOURCES  
MEMBER



## CONTACT

BRAD KAPLAN | 612 359 1625 | [brad.kaplan@transwestern.com](mailto:brad.kaplan@transwestern.com)

The information provided herein was obtained from sources believed reliable; however, Transwestern makes no guarantees, warranties or representations as to the completeness or accuracy thereof. The presentation of this property is submitted subject to errors, omissions, change of price or conditions, prior sale or lease, or withdrawal without notice. Copyright © 2025 Transwestern.