

# CAMPUS COMMONS

1875 CAMPUS COMMONS DRIVE | RESTON, VA



## PROPERTY HIGHLIGHTS

- » 11 minute walk to the Wiehle-Reston Metro Station (Silver line) and immediate access to Fairfax Connector Bus lines
- » Easy access to Dulles Toll Road, Reston Town Center, Fairfax County Parkway and Dulles International Airport
- » Abundant surface parking
- » Eco-friendly build-outs and green property management systems
- » Close to shopping, dining and entertainment amenities

## AVAILABILITIES

**Suite 225 - 2,009 SF**  
Available Immediately

**Suite 301 - 3,095 SF**  
Available Immediately

# LOCATION & AMENITIES

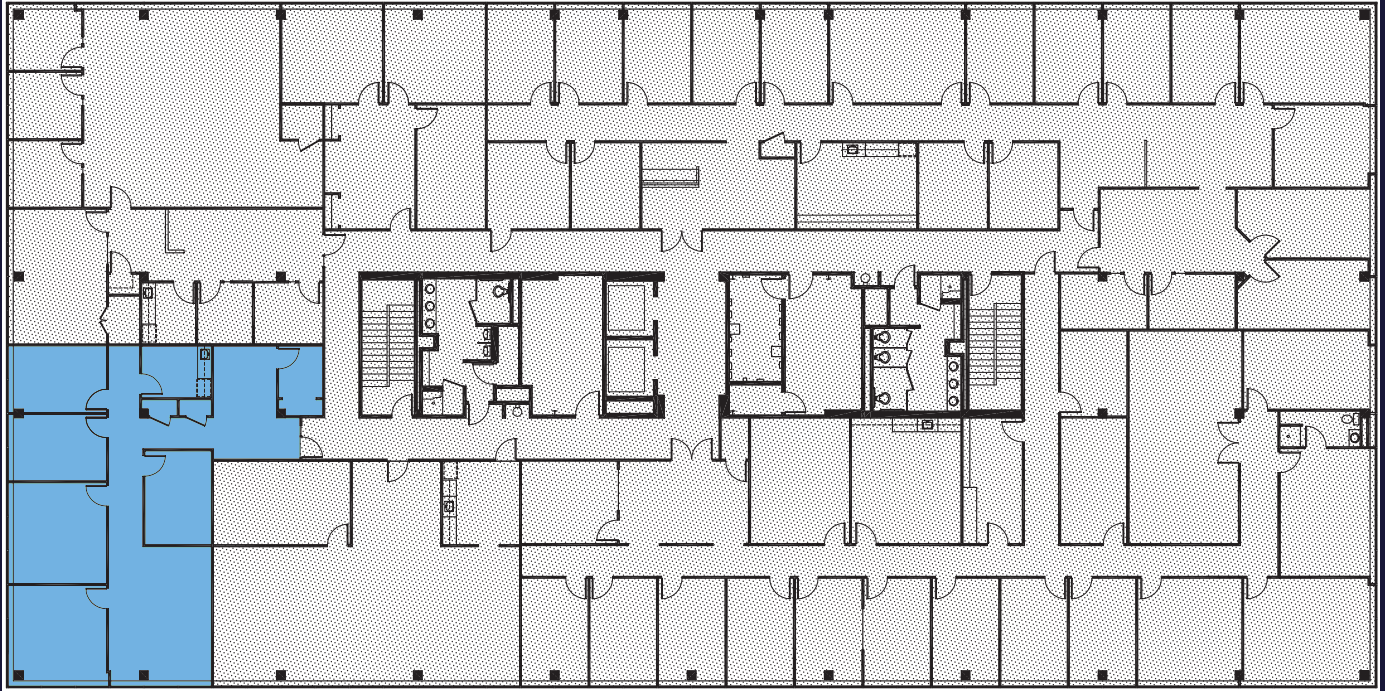


Campus Commons is located adjacent to the Dulles Toll Road (267) and shy of Wiehle-Reston metro station. This superior location offers immediate access to Reston Station and Reston Town Center. Popular amenities that fall within a 0.5 mile radius include:



## 2ND FLOOR

Suite 225 / 2,009 SF / Available Immediately



- Office Intensive
- Reception
- Kitchen
- Conference Room
- Abundant Window Line

# 3RD FLOOR

Suite 301 / 3,095 SF\* / Available Immediately



FOR MORE INFORMATION,  
PLEASE CONTACT:

**Alan Asman**

703. 749. 9464

alan.asman@transwestern.com

**Bernie McKeever, Jr.**

703. 749. 9462

bernard.mckeever@transwestern.com

**Cole McCarthy**

703. 749. 9401

cole.mccarthy@transwestern.com

 **TRANSWESTERN®**

7900 Tysons One Place, Suite 600  
McLean, VA 22102

703.821.0040 | transwestern.com