

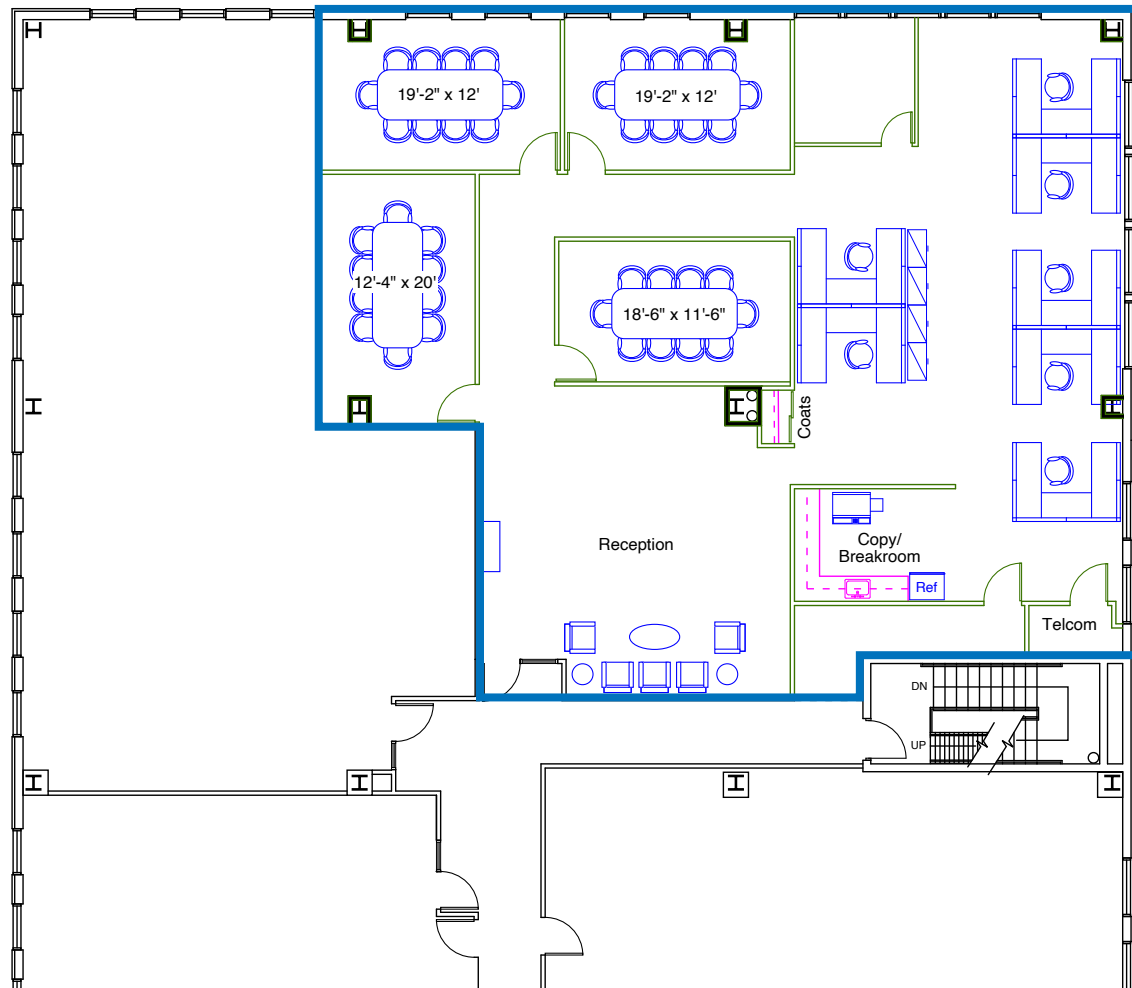
OFFICE SPACE FOR LEASE

THE OFFICES AT SOUTHLANDS

6155 S Main Street
Aurora, CO 80016

BUILDING E | SUITE 280

3,738 SF



Partition Plan

Scale: 1/8" = 1' - 0"

LEASING INFORMATION

David Shapiro

303.407.1466

david.shapiro@transwestern.com

Karen Clarke

303.407.1463

karen.clarke@transwestern.com

The information provided herein was obtained from sources believed reliable; however, Transwestern makes no guarantees, warranties or representations as to the completeness of accuracy thereof. The presentation of this property is submitted subject to errors, omissions, change of price or conditions, prior to sale or lease, or withdrawal without notice. Copyright © 2026 Transwestern.