



# Space for Recharge

175,557 RSF // 4 BUILDING CAMPUS



PACIFIC OAK  
Keppel Pacific Oak US REIT



TRANSWESTERN



Westech 360, a four-building, Class A office campus on North Capital of Texas Highway Loop 360 in Northwest Austin, offers newly designed, move-in-ready suites with access to numerous surrounding business centers and shopping and dining hubs including The Arboretum, one of Austin's top retail destinations, just a two-minute drive away.

**THE OVER 175,000 SF CAMPUS IS WELL-SERVED BY TWO HIGHWAYS, ENJOYS EXCELLENT INGRESS AND EGRESS AT A LIGHTED INTERSECTION AND HAS PROMINENT VISIBILITY FROM LOOP 360.**

**TAKE A LOOK FROM A BIRD'S-EYE VIEW**





# Building Features & Amenities

- Newly Renovated Lobbies
- Reservable Common Conference Center
- Fitness Center with Shower Facilities
- On-site Food & Beverage with Lunchdrop Service
- Rotating Food Trucks



CONFERENCE CENTER



OUTDOOR PATIO SEATING



FITNESS CENTER



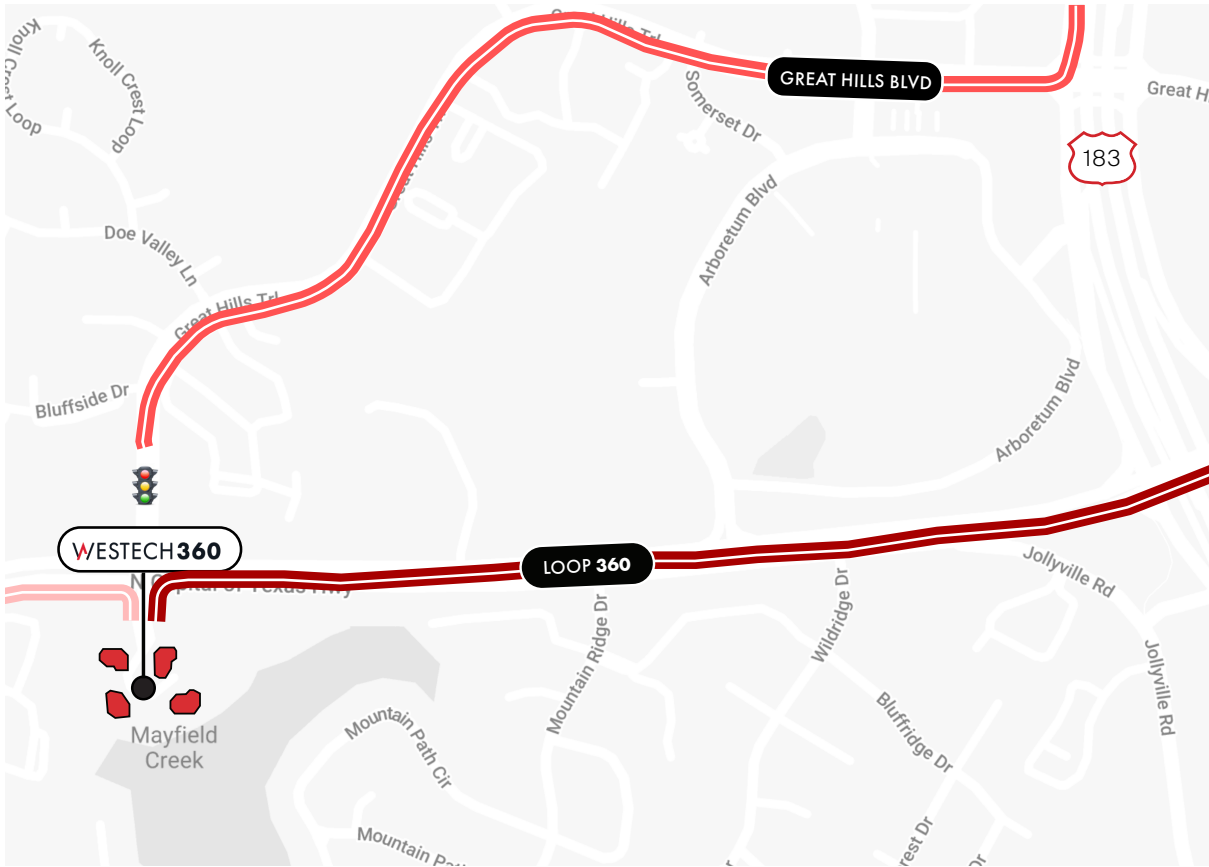
NEWLY RENOVATED LOBBIES



CONNECTED WALKING PATHS

- Outdoor Gathering Area
- Excellent Ingress/Egress at Lighted Intersection
- 3.5:1000 Structured Parking Garage
- Bipolar Ionization HVAC
- On-site Property Management
- Monument Signage Opportunities





# Premier Location

RIGHT OFF OF  
LOOP 360

## EXPLORE THE NEIGHBORHOOD

DRIVE TIMES  
(MINUTES)

1

BULL CREEK  
GREENBELT

2

THE  
ARBORETUM

7

PENNYBACKER BRIDGE  
OVERLOOK

10

THE  
DOMAIN

12

Q2 STADIUM

15

AUSTIN CBD









175,557 RSF | 4 BUILDING CAMPUS

# Providing the Perfect Environment

## WESTECH 1

SUITE 1250 **4,239 SF**

## WESTECH 3

SUITE 3200\* **5,484 SF**  
Whitebox

SUITE 3220\* **1,111 SF**

SUITE 3325 **3,222 SF**

SUITE 3350 **2,703 SF**

\*Suites are contiguous 6,595 SF

## WESTECH 2

SUITE 2220 **3,930 SF**

[VIEW VIRTUAL TOUR](#)

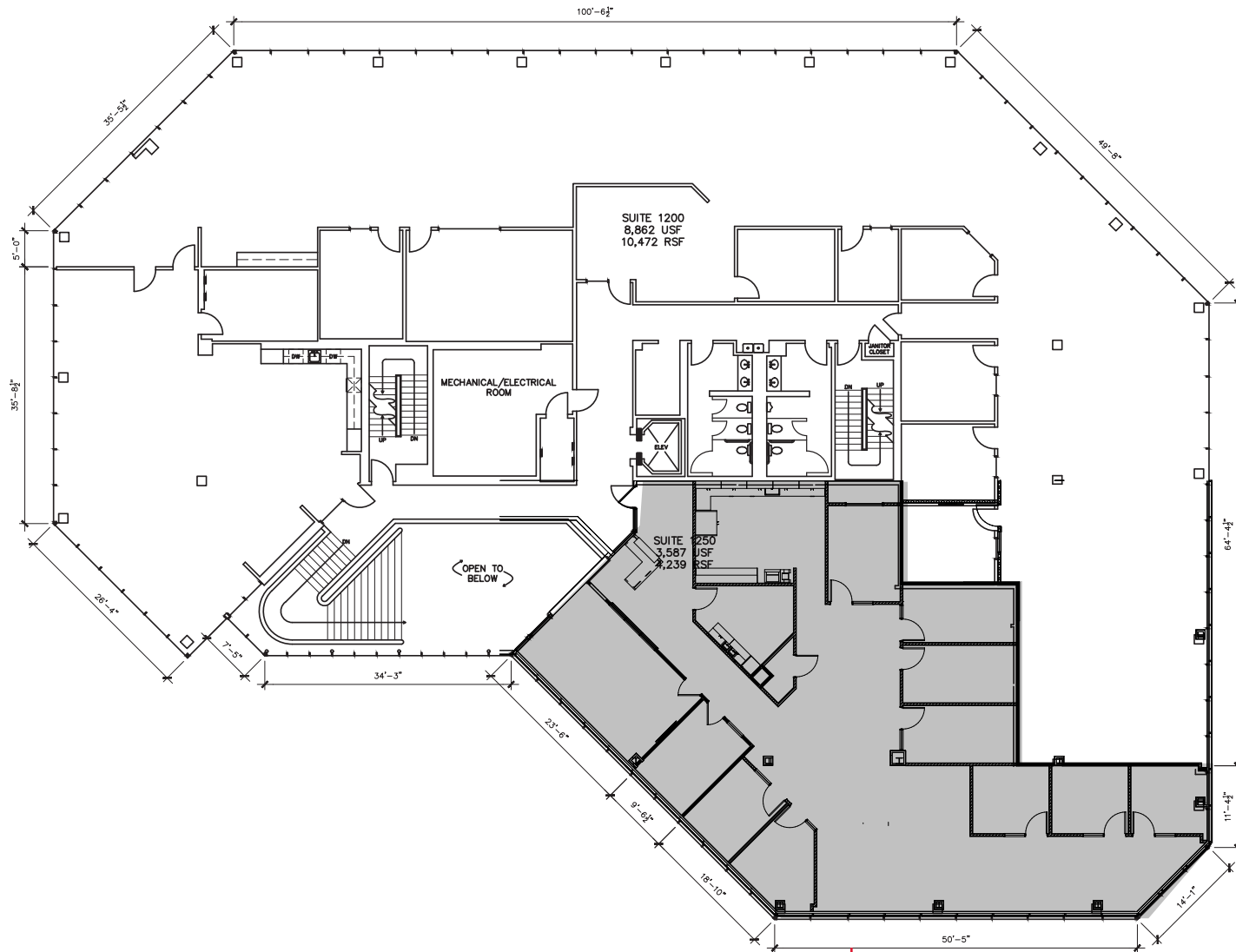
## WESTECH 4

SUITE 4140 **3,276 SF**

[VIEW THE CAMPUS](#)





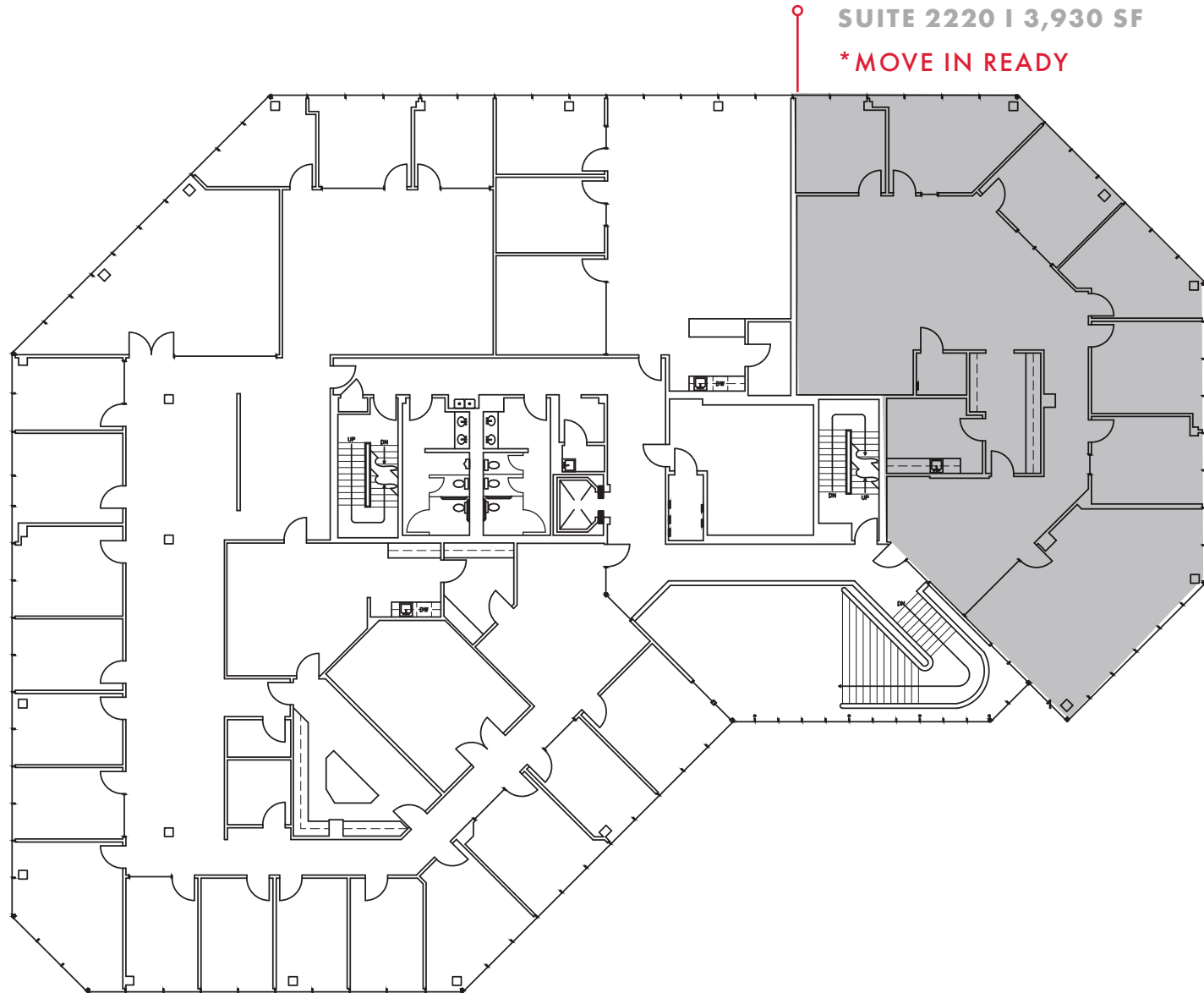


**SUITE 1250 | 4,239 SF**



# WESTECH<sup>2</sup>

## 2ND FLOOR



SUITE 2220 | 3,930 SF

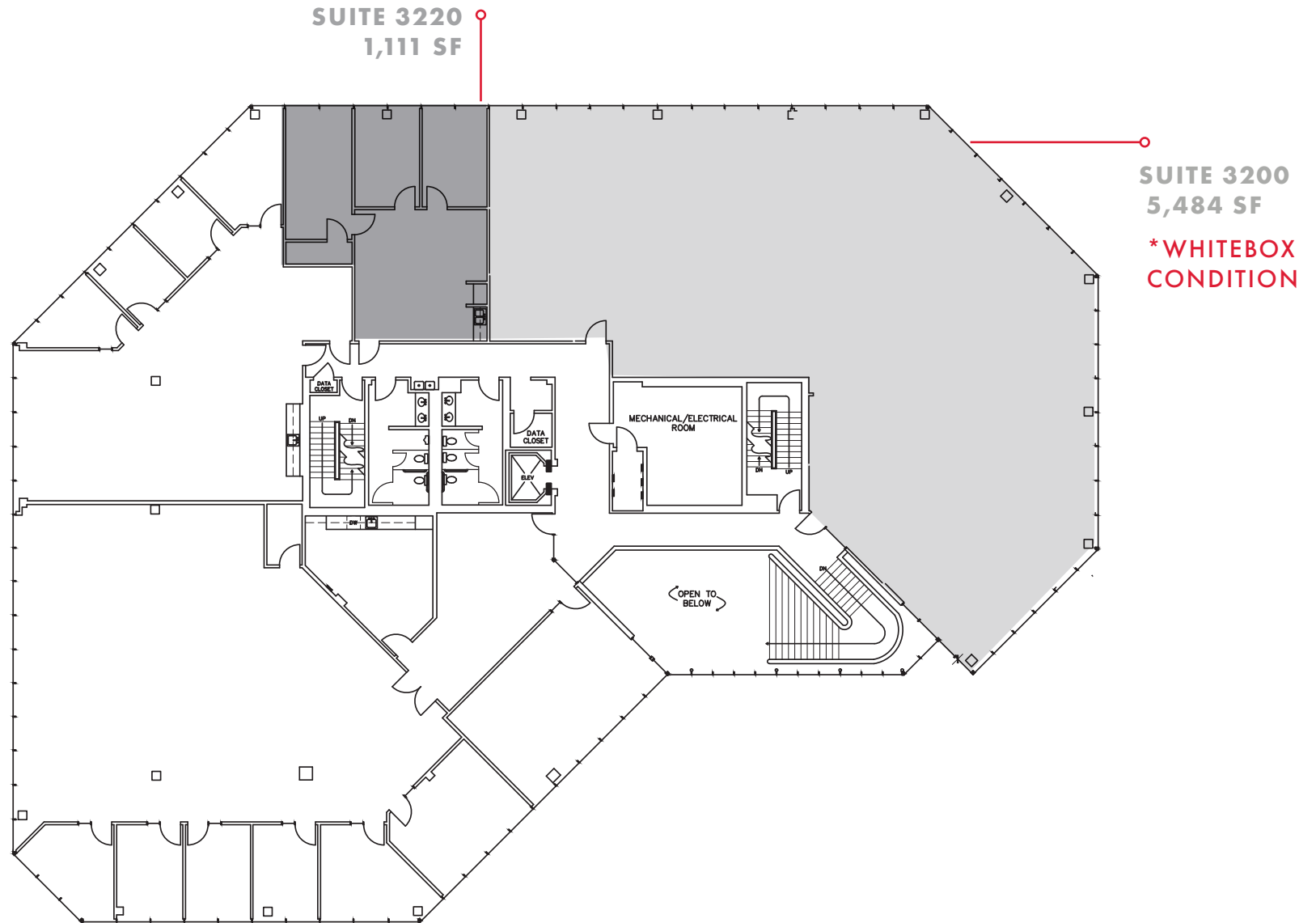
\* MOVE IN READY

[VIEW VIRTUAL TOUR](#)

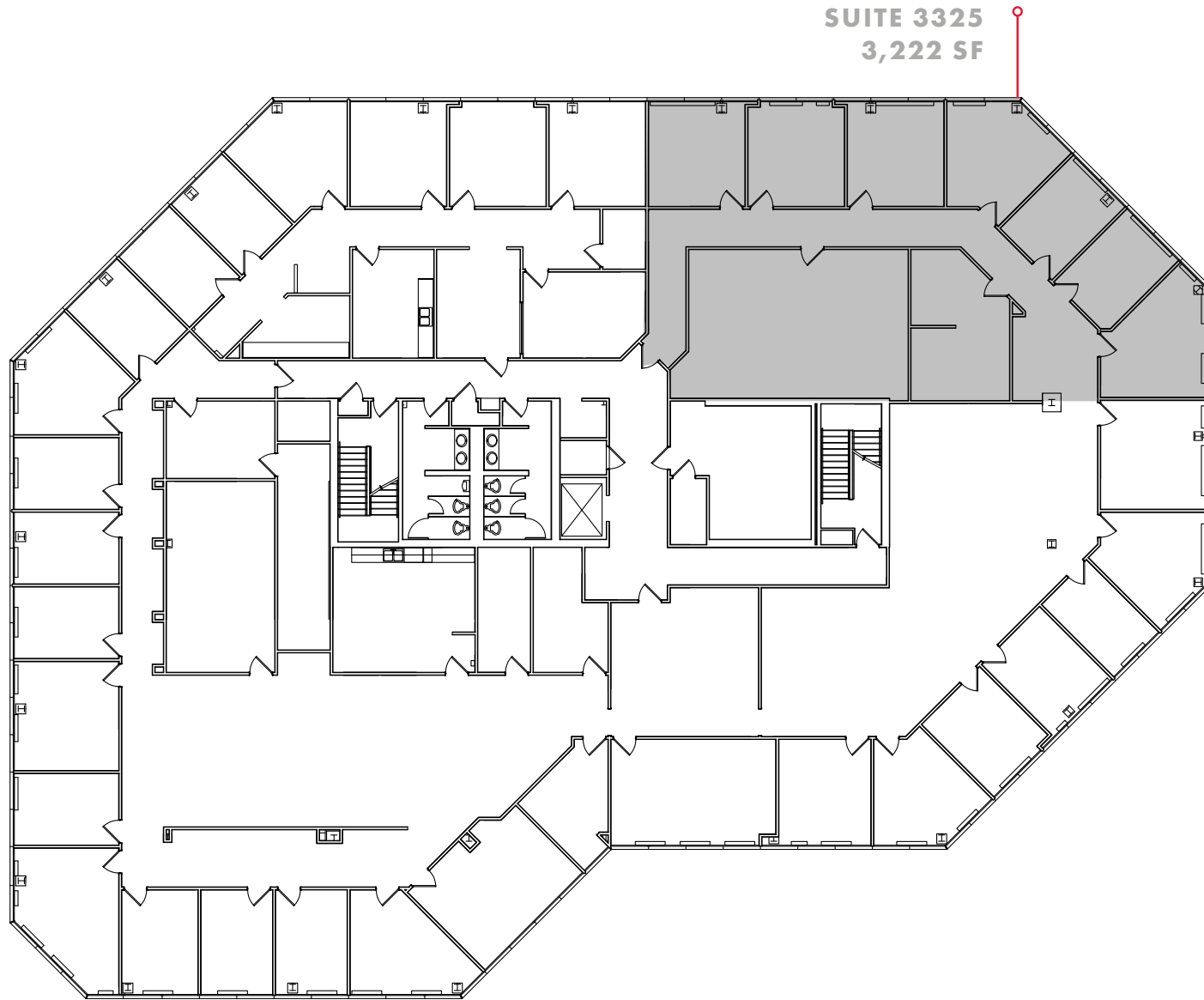


# WESTECH<sup>3</sup>

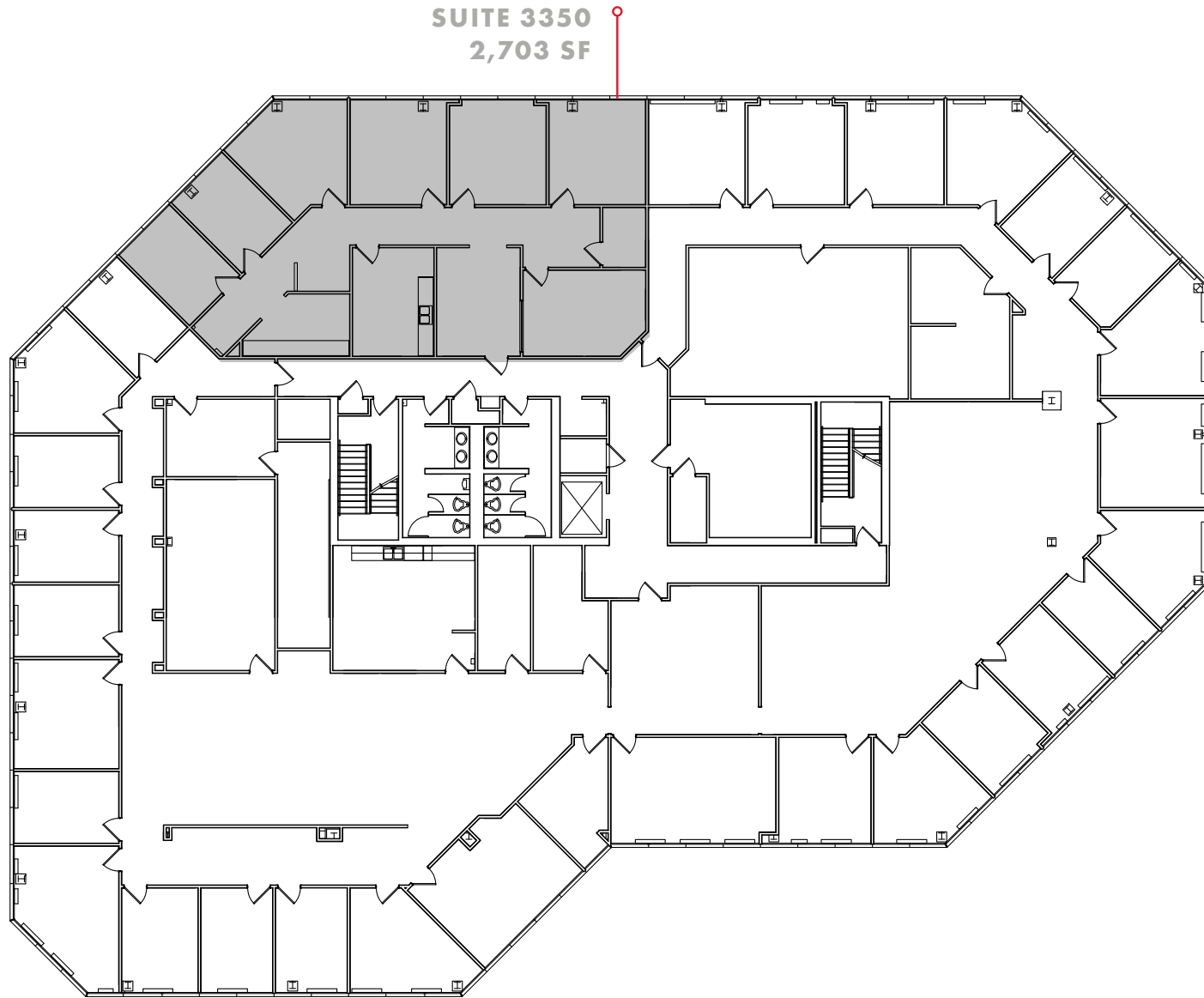
2ND FLOOR



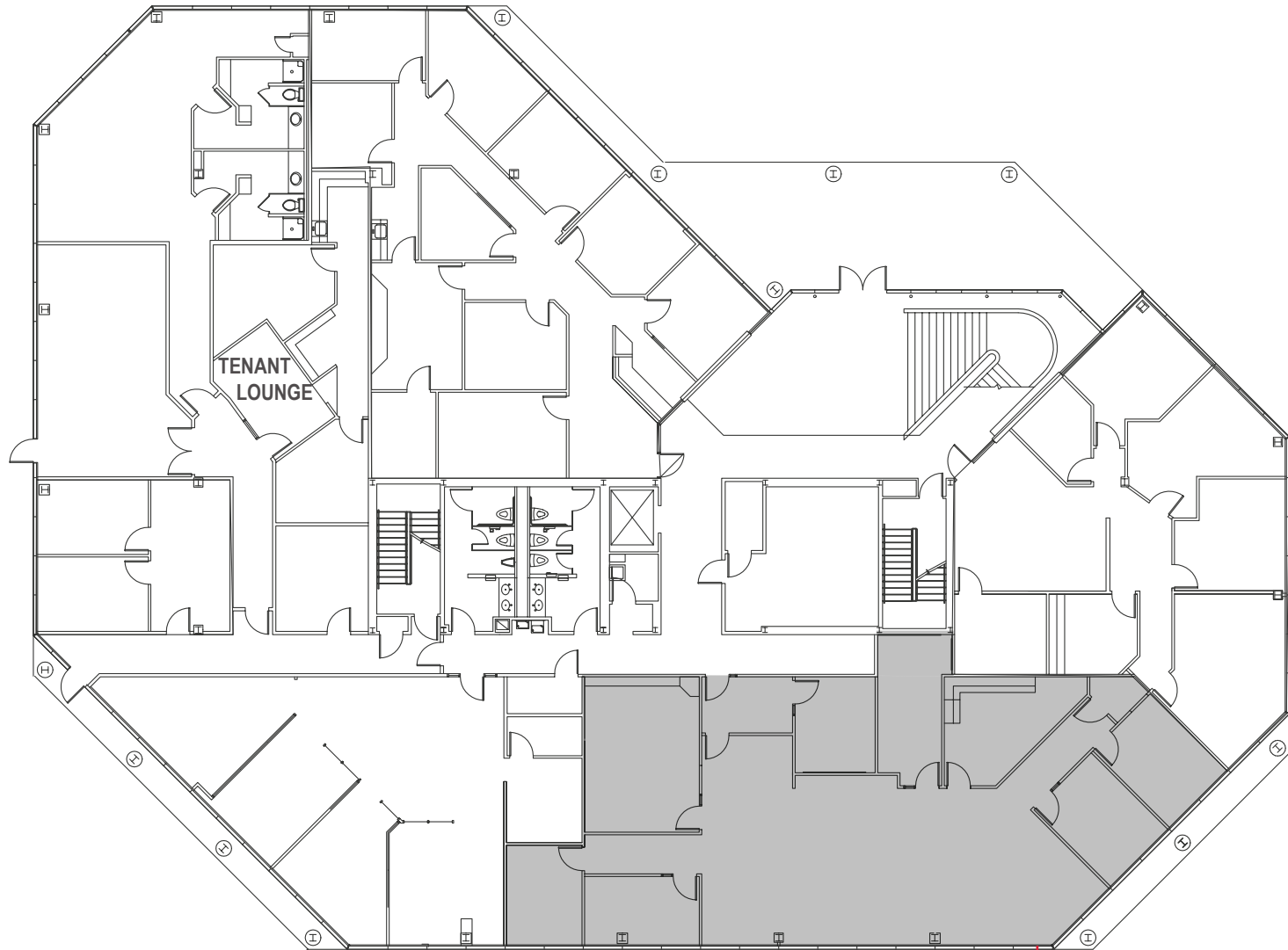












**SUITE 4140**  
**3,276 SF**





# WESTECH360

For leasing information, please contact:

**BRANDON LESTER**

512.314.3576

[BRANDON.LESTER@TRANSWESTERN.COM](mailto:BRANDON.LESTER@TRANSWESTERN.COM)

**CONNOR ATCHLEY**

512.314.3557

[CONNOR.ATCHLEY@TRANSWESTERN.COM](mailto:CONNOR.ATCHLEY@TRANSWESTERN.COM)



PACIFIC OAK  
Keppel Pacific Oak US REIT



TRANSWESTERN