



Greystone Summit

OFFICE FOR LEASE

3432 Greystone Drive
Austin, Texas 78731

 Transwestern

About the Building

Greystone Summit

A 2-story suburban office building located in Northwest Austin. Property has direct access to MoPac Expressway via Greystone Drive.

BUILDING FEATURES

- Tree-filled landscaping
- 4.28/1,000 surface parking
- Easy access to Loop 1 / MoPac Expressway
- Three blocks north of the Far West / MoPac intersection
- Abundant retail, restaurants and housing nearby



Graham Trull, SIOR

Vice President
(512) 314-3963
graham.trull@transwestern.com

 Transwestern

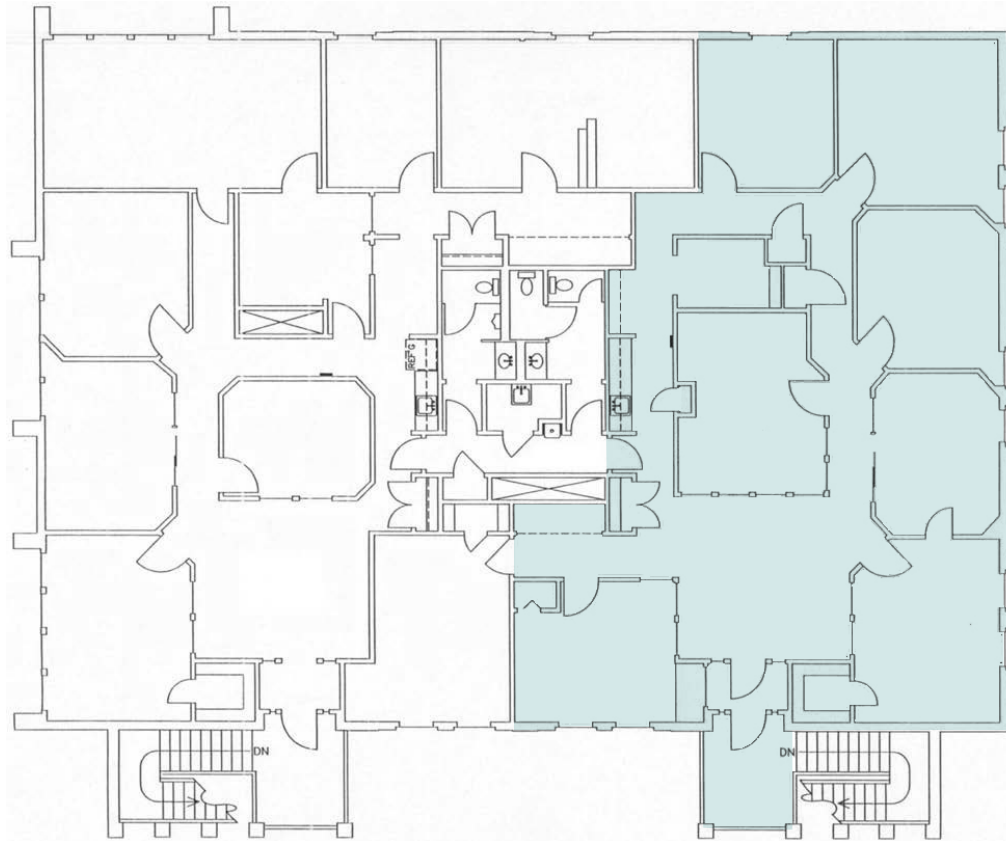
3432 Greystone Drive
Austin, Texas 78731

Level 2

SUITE 201 • 2,179 RSF AVAILABLE

Net Rental Rate: \$12.00 PSF NNN

Estimated Operating Expenses: \$14.90 PSF



Graham Trull, SIOR

Vice President
(512) 314-3963
graham.trull@transwestern.com

Nearby Amenities

1 Greystone | Far West Blvd

Austin Terrier
 Bert's BBQ
 Boulevard Bar & Grill
 Chinatown
 Daily Juice Café
 Frost Bank
 Gatti's Pizza
 Hao-O Asian Kitchen
 HEB
 Kneaded Pleasures
 La Salsa Mexican Grill
 Newworld Café
 Pizza Hut
 Saffron
 Snap Kitchen
 Starbucks
 The UPS Store
 US Post Office
 Wells Fargo Bank
 Wendy's

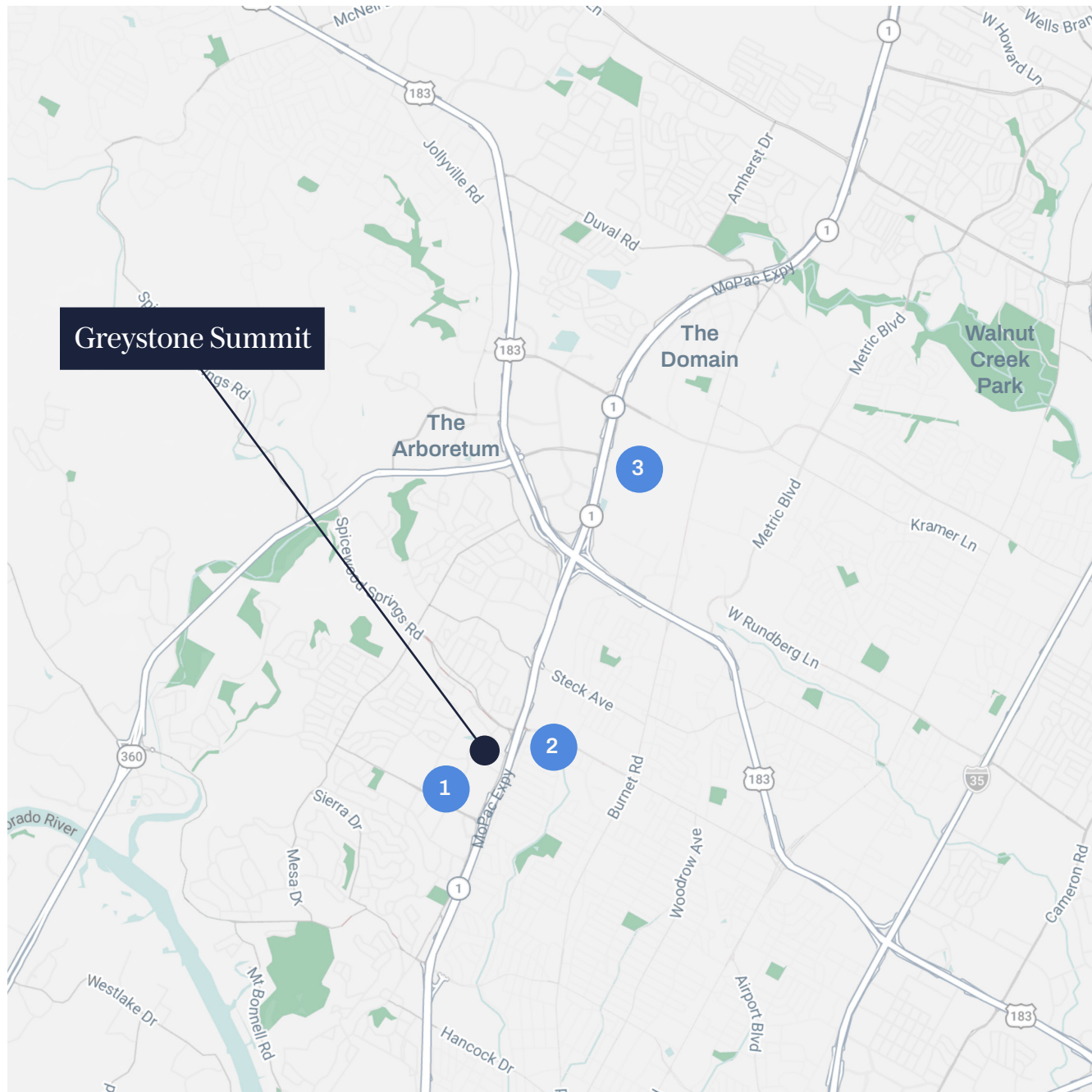
2 Anderson Lane

Alamo Drafthouse
 Anytime Fitness
 Bank of America
 Bartletts
 Cover 3
 CVS
 Dos Batos Tacos
 Einstein Brothers Bagels

Epoch Coffee
 Hopdoddy Burger Bar
 Madam Mam's
 Office Depot
 Panda Express
 Sonic Drive-In
 Sorrento's Coffee
 Starbucks
 Tarka Indian Kitchen
 Walmart Supercenter
 Whataburger
 Which Wich
 Zen Japanese

3 The Shops at Arbor Walk

Alfred Angelo Brida
 BJ's Restaurant
 Carter's
 Chipotle
 Dress Barn
 DSW Designer Shoes
 Firestone Tires
 Lupe Tortilla
 Marshall's
 Masala Wok
 Mattress Firm
 Mimi's Cafe
 Natural Grocers



Graham Trull, SIOR

Vice President
 (512) 314-3963
 graham.trull@transwestern.com



Get in Touch

Graham Trull, SIOR

Vice President

(512) 314-3963

graham.trull@transwestern.com