

13,116 SF FOR LEASE

# SOUTHPARK COMMERCE CENTER V

4500 S PLEASANT VALLEY RD. | BUILDING 1 | SUITE 100



AVAILABLE  
02.01.2025

## TRANSWESTERN CONTACT INFORMATION

**CARTER THURMOND**  
210.255.0644 | [Carter.Thurmond@transwestern.com](mailto:Carter.Thurmond@transwestern.com)

**NASH FRISBIE**  
512.314.5204 | [Nash.Frisbie@transwestern.com](mailto:Nash.Frisbie@transwestern.com)

AVAILABLE 02.01.2025

# HIGHLIGHTS

13,116 SF

3 DOCK DOORS

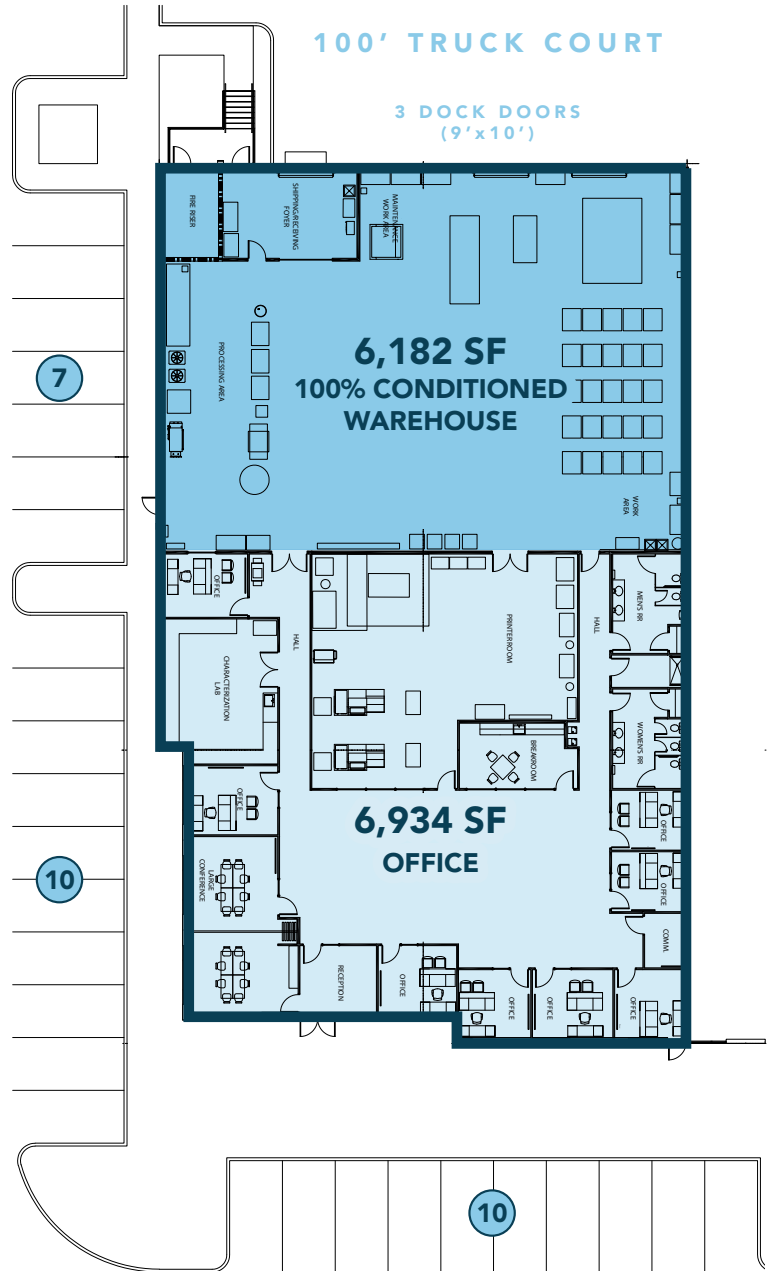
6,934 SF OFFICE

CONDITIONED WAREHOUSE

24' CLEAR HEIGHT

27 PARKING SPACES

1200 AMPS



## TRANSWESTERN CONTACT INFORMATION

**CARTER THURMOND**  
210.255.0644 | Carter.Thurmond@transwestern.com

**NASH FRISBIE**  
512.314.5204 | Nash.Frisbie@transwestern.com



WAREHOUSE PHOTOS

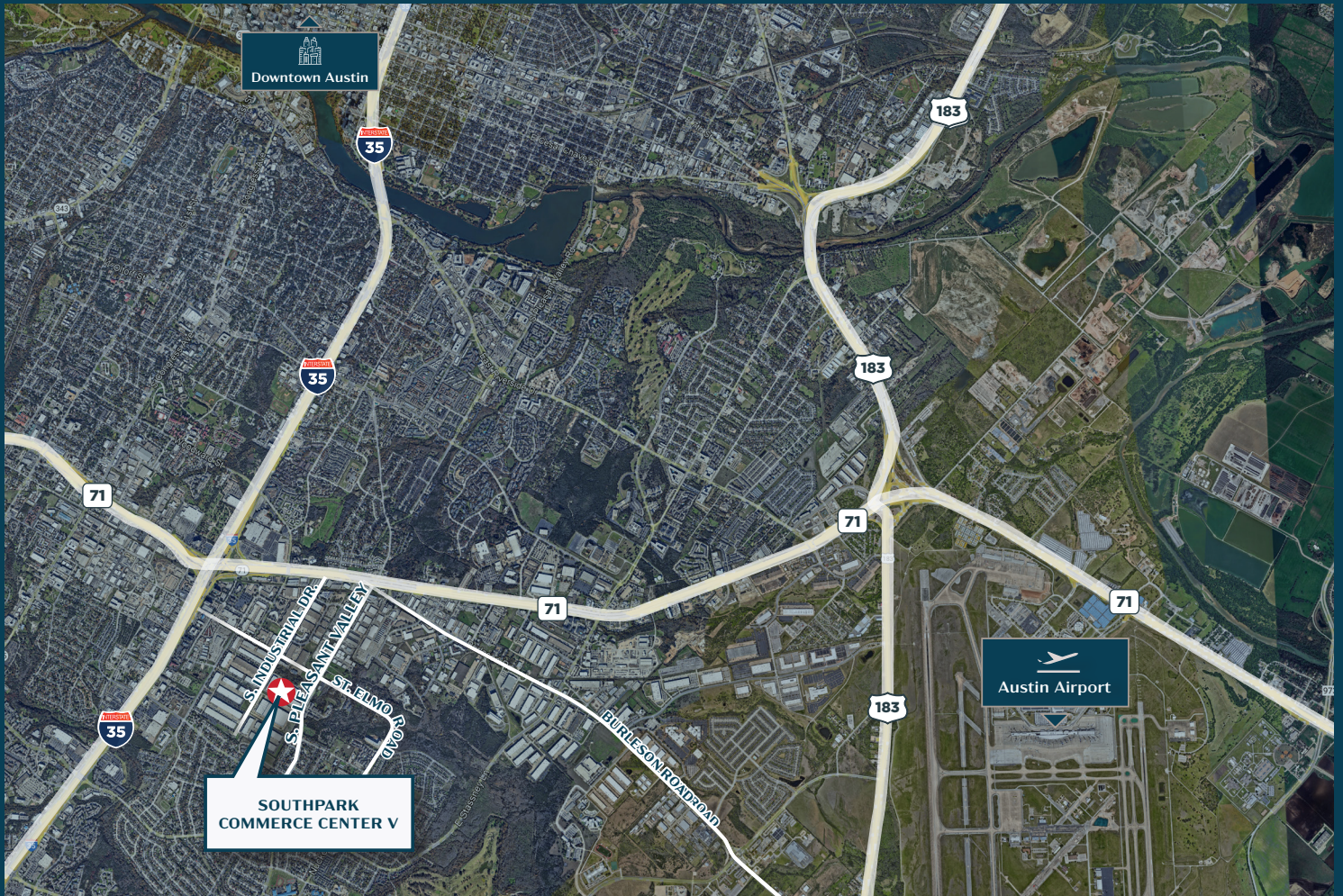


 **TRANSWESTERN CONTACT INFORMATION**

**CARTER THURMOND**  
210.255.0644 | [Carter.Thurmond@transwestern.com](mailto:Carter.Thurmond@transwestern.com)

**NASH FRISBIE**  
512.314.5204 | [Nash.Frisbie@transwestern.com](mailto:Nash.Frisbie@transwestern.com)





DRIVE TIMES



**DOWNTOWN AUSTIN**  
15 MIN



**TESLA**  
15 MIN



**SAMSUNG**  
25 MIN



**AUSTIN-BERGSTRUM  
INTERNATIONAL  
AIRPORT**  
5 MIN



**SAN ANTONIO**  
1 HOUR + 20 MIN



**DALLAS**  
3 HOURS + 5 MIN

 **TRANSWESTERN CONTACT INFORMATION**

**CARTER THURMOND**  
210.255.0644 | [Carter.Thurmond@transwestern.com](mailto:Carter.Thurmond@transwestern.com)

**NASH FRISBIE**  
512.314.5204 | [Nash.Frisbie@transwestern.com](mailto:Nash.Frisbie@transwestern.com)

# **SOUTHPARK COMMERCE CENTER V**

---

**4500 S PLEASANT VALLEY RD.**

**BUILDING 1 | SUITE 100**

## **CARTER THURMOND**

CARTER.THURMOND@TRANSWESTERN.COM

210.255.0644

## **NASH FRISBIE**

NASH.FRISBIE@TRANSWESTERN.COM

512.314.5204

