

RETAIL

FORMER RESTAURANT FOR SALE OR LEASE  
**14845 S ROBERT TRAIL | ROSEMOUNT, MN 55068**

**TRANSWESTERN**  
**REALTY**  
**RESOURCES**  
 MEMBER



# PROPERTY SUMMARY

## OVERVIEW

**LOCATION:** 14845 S Robert Trail | Rosemount, MN  
**AVAILABLE:** Now  
**PID:** 34.64590.01.030  
**GLA:** 6,367 sq. ft.  
**LOT SIZE:** 1.16 acres  
**YEAR BUILT:** 2005 | Renovated 2021  
**PARKING:** Cross easement with center  
**FFE:** Negotiable

## FOR SALE

**ASKING PRICE:** \$2,450,000

## FOR LEASE

**ASKING RATE:** \$200,000 / year as-is

## AREA RETAIL

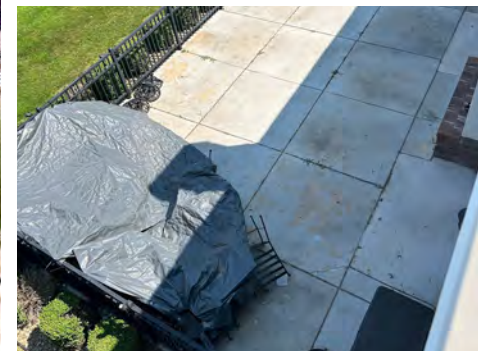


## DEMOGRAPHICS

DISTANCE	1 MILE	3 MILE	5 MILE
TOTAL POPULATION	5,758	10,540	39,083
DAYTIME POPULATION	4,962	7,336	23,487
HOUSEHOLDS	2,208	3,815	14,305
MEDIAN HH INCOME	\$83,915	\$100,720	\$103,485



# PARCEL OUTLINE



CONTACT

CHRIS SIMMONS | 612.359.1675  
chris.simmons@transwestern.com



REALTY  
RESOURCES  
MEMBER



# INTERIOR PHOTOS



CONTACT

CHRIS SIMMONS | 612.359.1675  
chris.simmons@transwestern.com



REALTY  
RESOURCES  
MEMBER